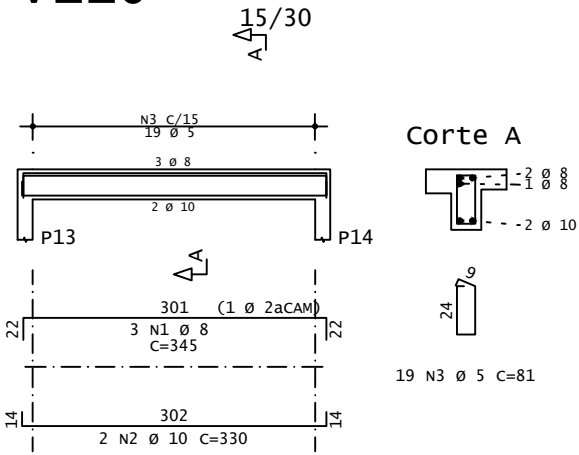
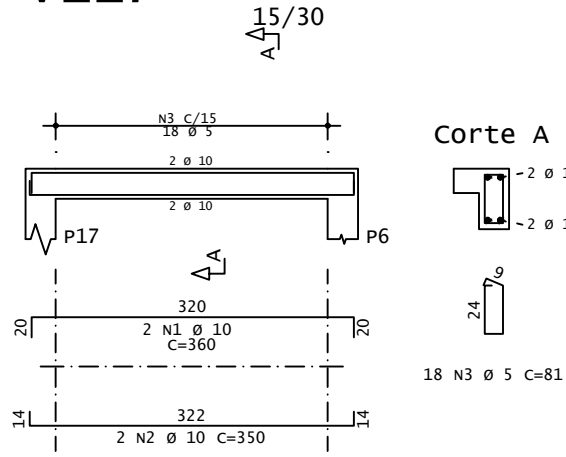


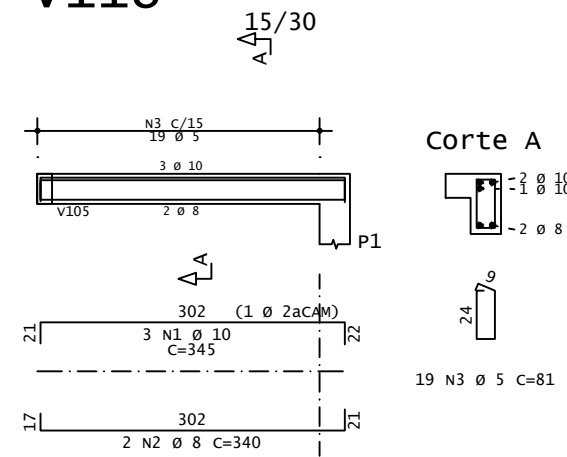
V110



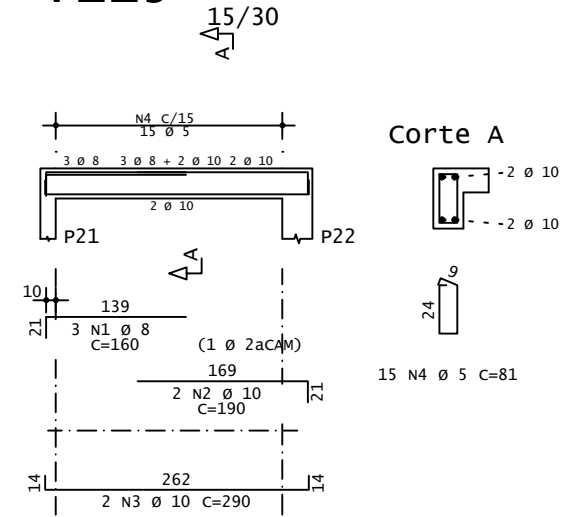
V117



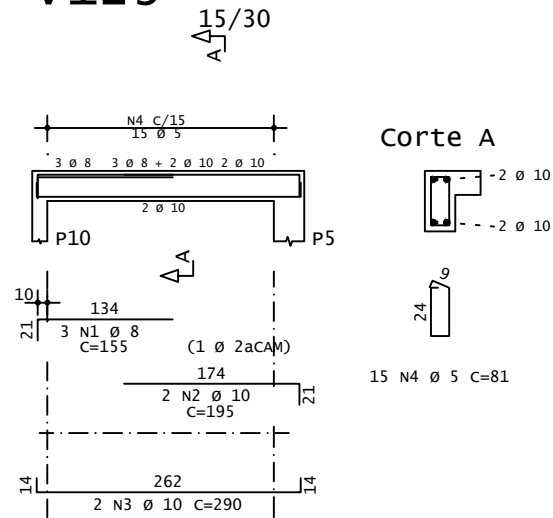
V118



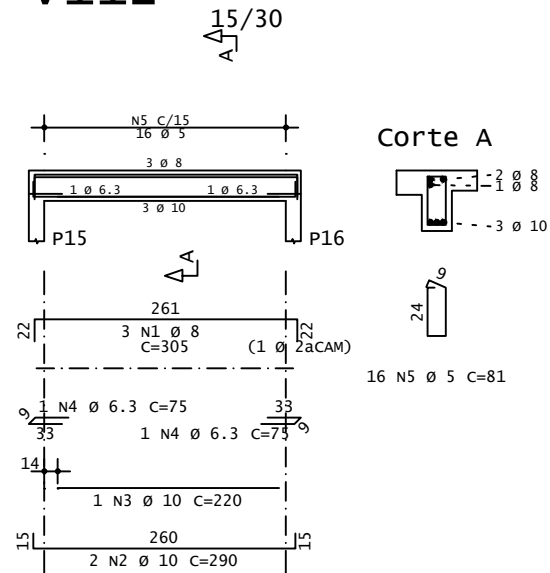
V115



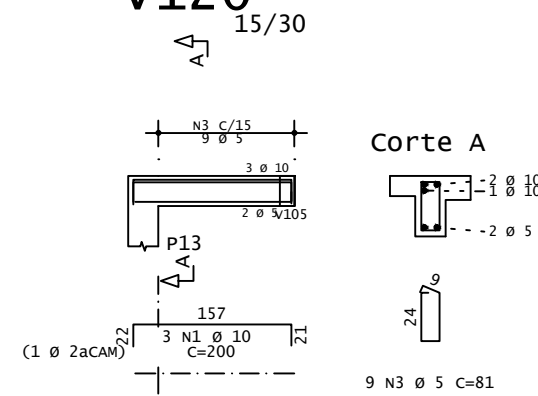
V129



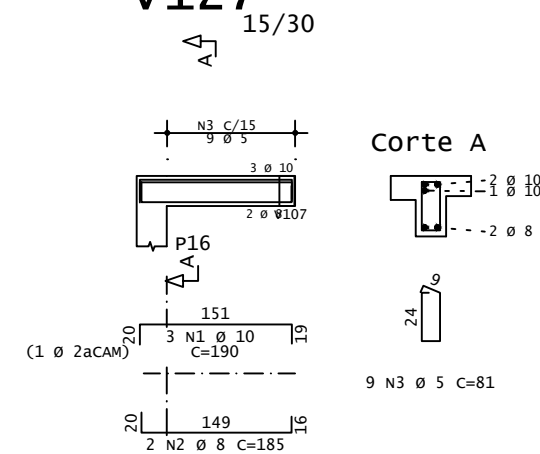
V112



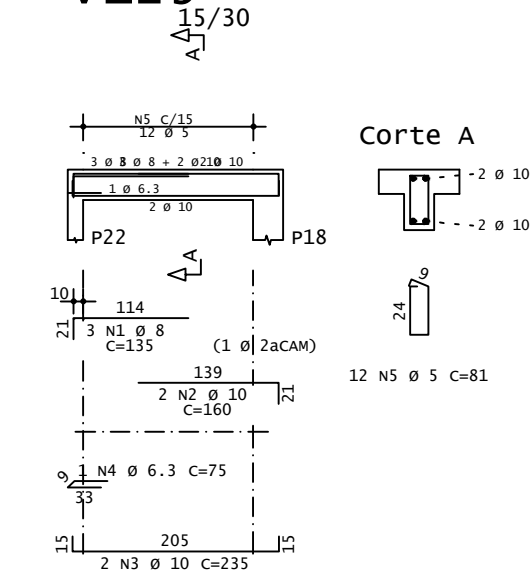
V120



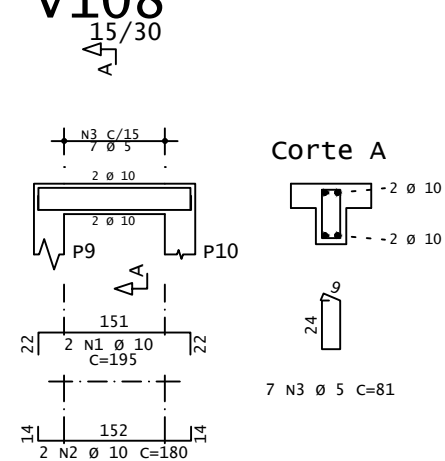
V127



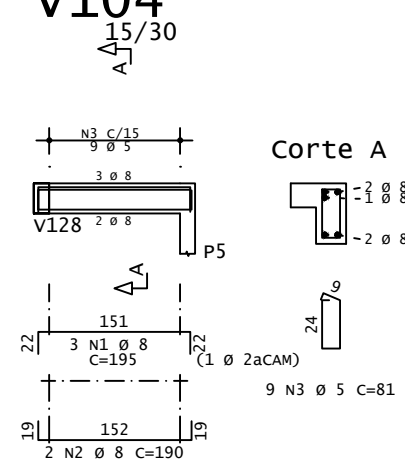
V125



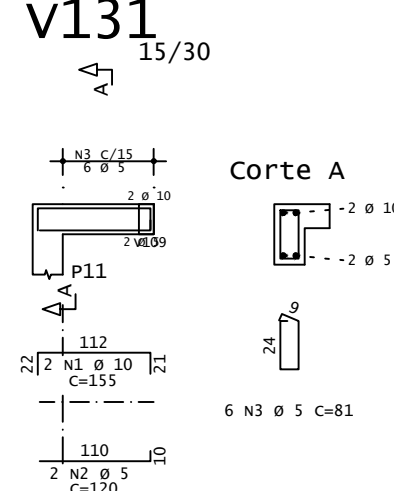
V108



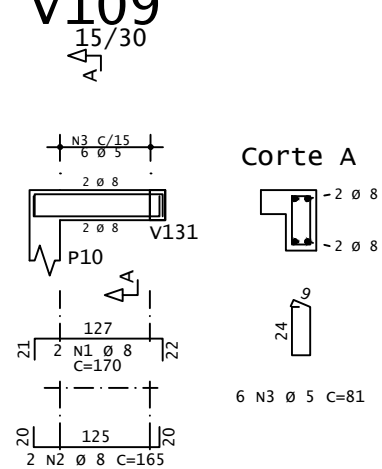
V104



V131



V109



AÇO	POS	BIT	QUANT	COMPRIMENTO		
				UNIT	TOTAL	
		mm		cm	cm	
V104	50A	1	8	3	195	585
	50A	2	8	2	190	380
	60A	3	5	9	81	729
V108	50A	1	10	2	195	390
	50A	2	10	2	180	360
	60A	3	5	7	81	567
V109	50A	1	8	2	170	340
	50A	2	8	2	165	330
	60A	3	5	6	81	486
V110	50A	1	8	3	345	1035
	50A	2	10	2	330	660
	60A	3	5	19	81	1539
V112	50A	1	8	3	305	915
	50A	2	10	2	290	580
	50A	3	10	1	220	220
	50A	4	6.3	2	75	150
	60A	5	5	16	81	1296
V115	50A	1	8	3	160	480
	50A	2	10	2	190	380
	50A	3	10	2	290	580
	60A	4	5	15	81	1215
V117	50A	1	10	2	360	720
	50A	2	10	2	350	700
	60A	3	5	18	81	1458
V118	50A	1	10	3	345	1035
	50A	2	8	2	340	680
	60A	3	5	19	81	1539
V120	50A	1	10	3	200	600
	50A	2	5	2	165	330
	60A	3	5	9	81	729
V125	50A	1	8	3	135	405
	50A	2	10	2	160	320
	50A	3	10	2	235	470
	50A	4	6.3	1	75	75
	60A	5	5	12	81	972
V127	50A	1	10	3	190	570
	50A	2	8	2	185	370
	60A	3	5	9	81	729
V129	50A	1	8	3	155	465
	50A	2	10	2	195	390
	50A	3	10	2	290	580
	60A	4	5	15	81	1215
V131	50A	1	10	2	155	310
	60A	2	5	2	120	240
	60A	3	5	6	81	486

RESUMO DE AÇO			
AÇO	BIT	COMPR	PESO
	mm	m	kgf
60A	5	135	21
50A	6.3	2	1
50A	8	60	24
50A	10	89	55
Peso Total		60A =	21 kgf
Peso Total		50A =	79 kgf

Responsável: Secretaria de Obras e Trânsito

Projeto: Projeto Estrutural Ponto de Apoio - UBS Pontevila

Local: Pontevila

Engenheiro Civil: Willian Ribeiro

Prefeito Municipal: Eugenio Vilela Júnior

Data: 10/2023

Escala: 1/75

Desenhista: Willian



Secretaria de Obras e Trânsito
Rua: Coronel Gonçalves D'Amarante, nº 83
Centro - Formiga | MG - Cep: 35570-000
(37) 3329-1846
secretariafgedobrasetransito@gmail.com