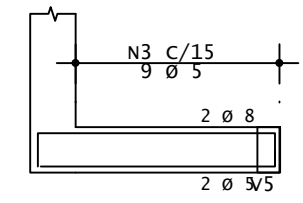
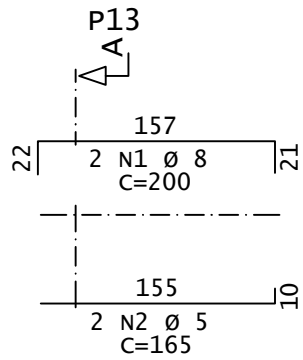
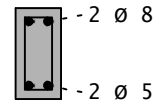


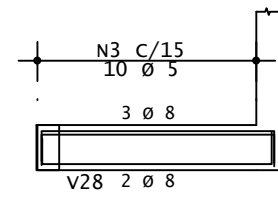
V20
15/30



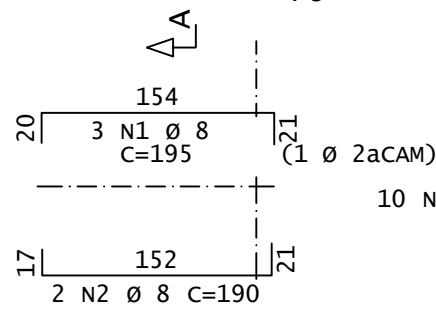
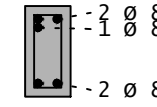
Corte A



V4
15/30



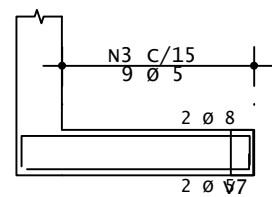
Corte A



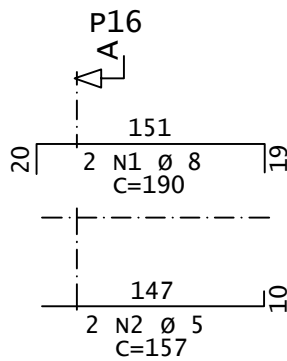
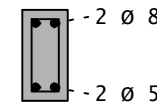
AÇO	POS	BIT mm	QUANT	COMPRIMENTO	
				UNIT cm	TOTAL cm
V4					
50A	1	8	3	195	585
50A	2	8	2	190	380
60A	3	5	10	81	810
V9					
50A	1	8	2	170	340
50A	2	8	2	165	330
60A	3	5	6	81	486
V20					
50A	1	8	2	200	400
60A	2	5	2	165	330
60A	3	5	9	81	729
V27					
50A	1	8	2	190	380
60A	2	5	2	157	314
60A	3	5	9	81	729
V31					
50A	1	8	2	155	310
50A	2	8	2	120	240
60A	3	5	6	81	486

RESUMO DE AÇO			
AÇO	BIT mm	COMPR m	PESO kgf
60A	5	39	6
50A	8	30	12
Peso Total		60A =	6 kgf
Peso Total		50A =	12 kgf

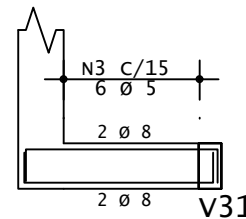
V27
15/30



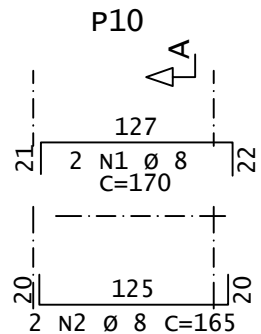
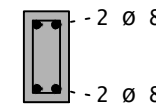
Corte A



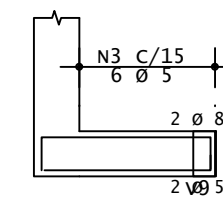
V9
15/30



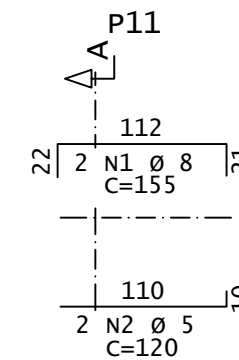
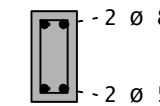
Corte A



V31
15/30



Corte A



Responsável: Secretaria de Obras e Trânsito

Projeto: Projeto Estrutural Ponto de Apoio - UBS Pontevila

Local: Pontevila

Engenheiro Civil: Willian Ribeiro

Prefeito Municipal: Eugenio Vilela Júnior

Data: 10/2023

Escala: 1/100

Desenhista: Willian



Secretaria de Obras e Trânsito
Rua: Coronel Gonçalves D'Amarante, nº 83
Centro - Formiga | MG - Cep: 35570-000
(37) 3329-1846
secretariafgedeobrasetransito@gmail.com