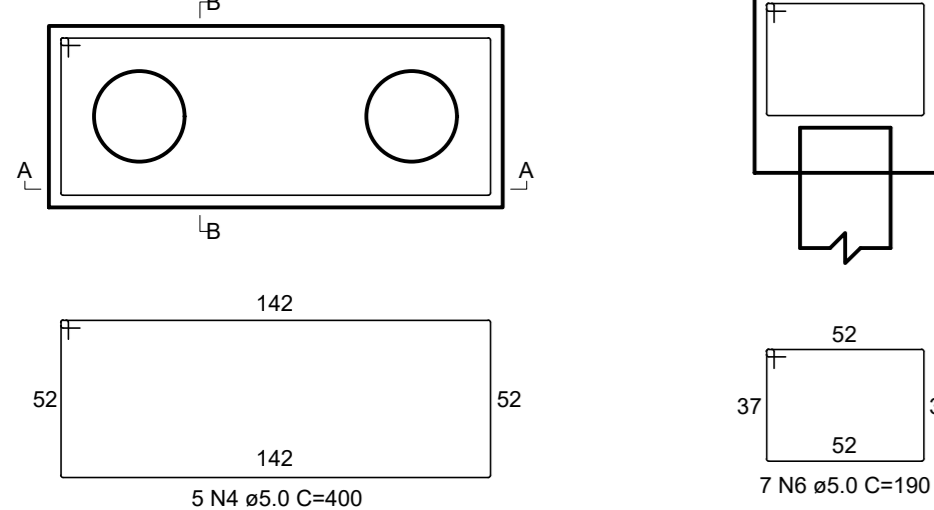


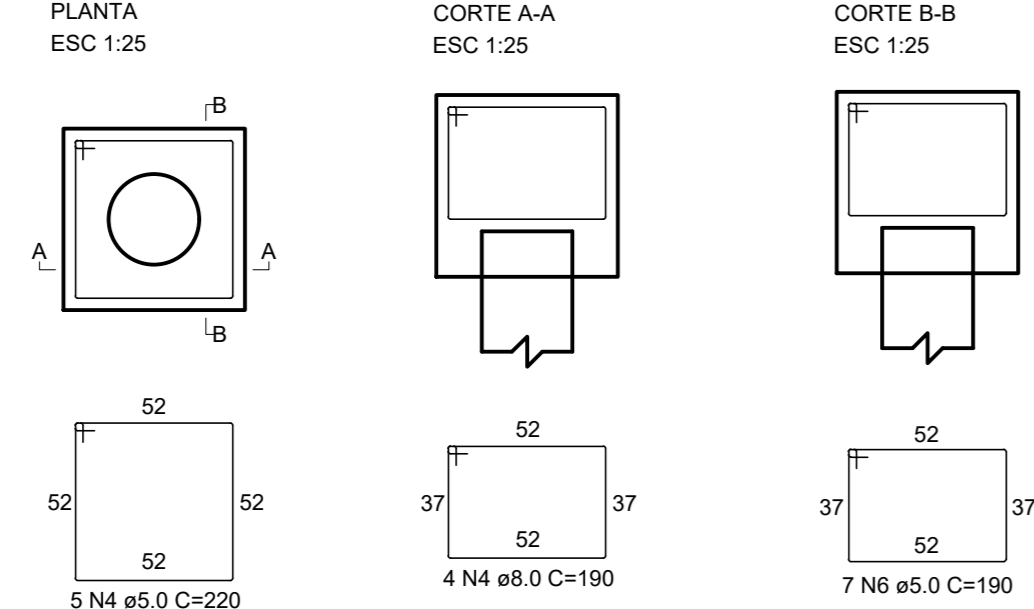
**7 ESTACAS MURO ARRIMO**  
ESCALA 1:25

BLOCOS  
2xE30  
PLANTA  
ESC 1:25



CORTE B-B  
ESC 1:25

BLOCOS  
1XE30  
PLANTA  
ESC 1:25



CORTE A-A  
ESC 1:25

CORTE B-B  
ESC 1:25

**8 ARRIMO RAMPA FACHADA**  
ESCALA 1:50

**9 ARRIMO ESCOLA**  
ESCALA 1:50

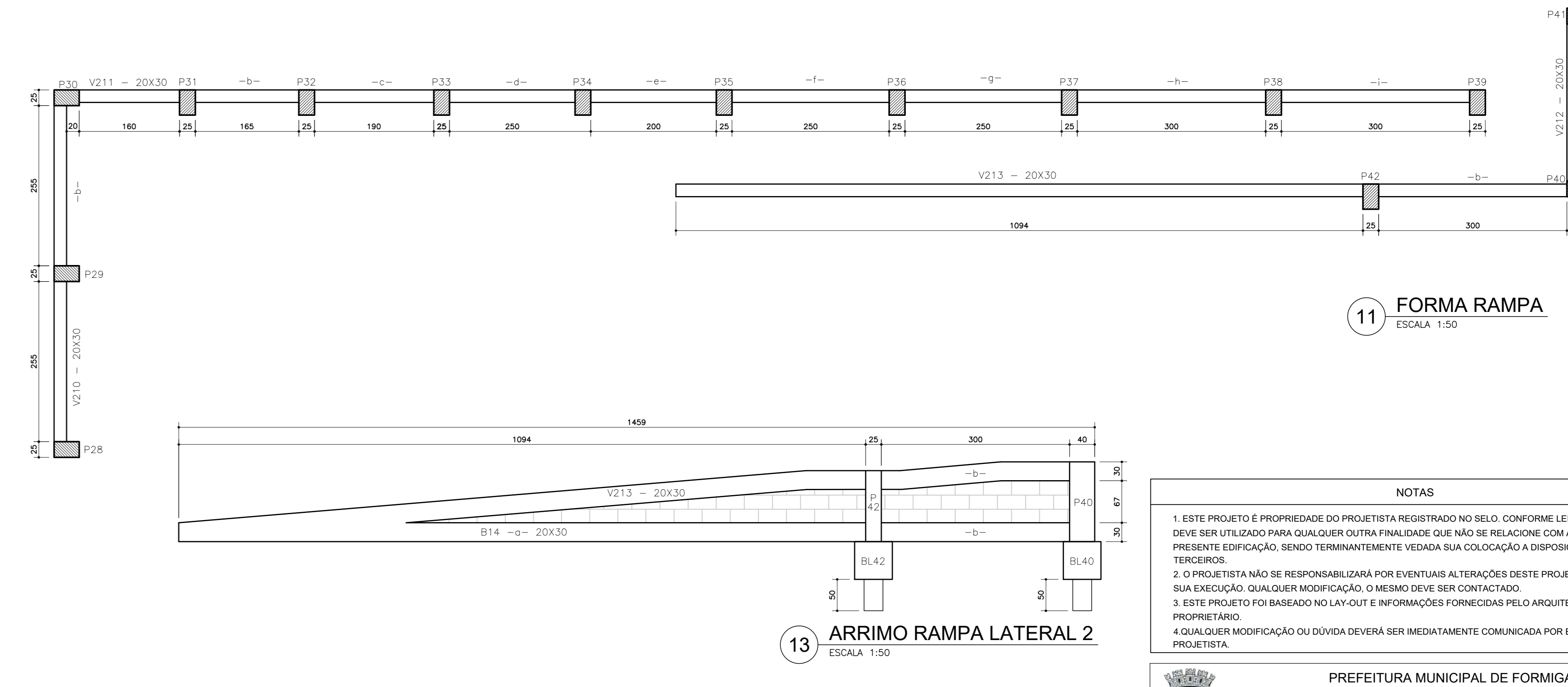
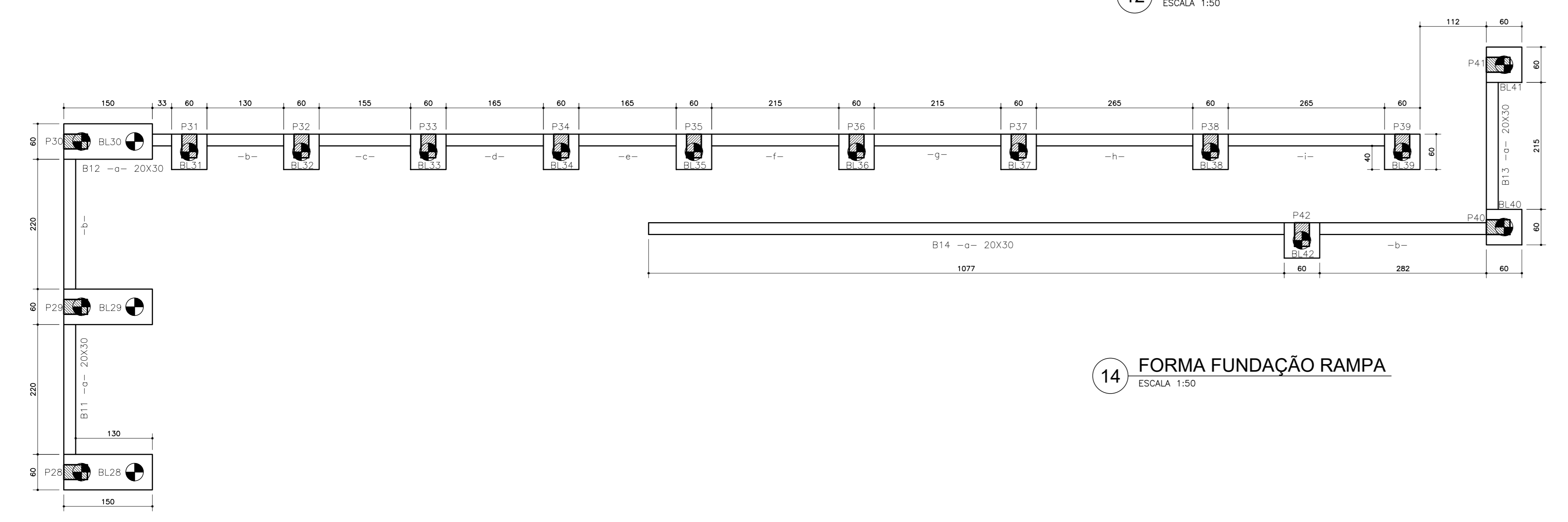
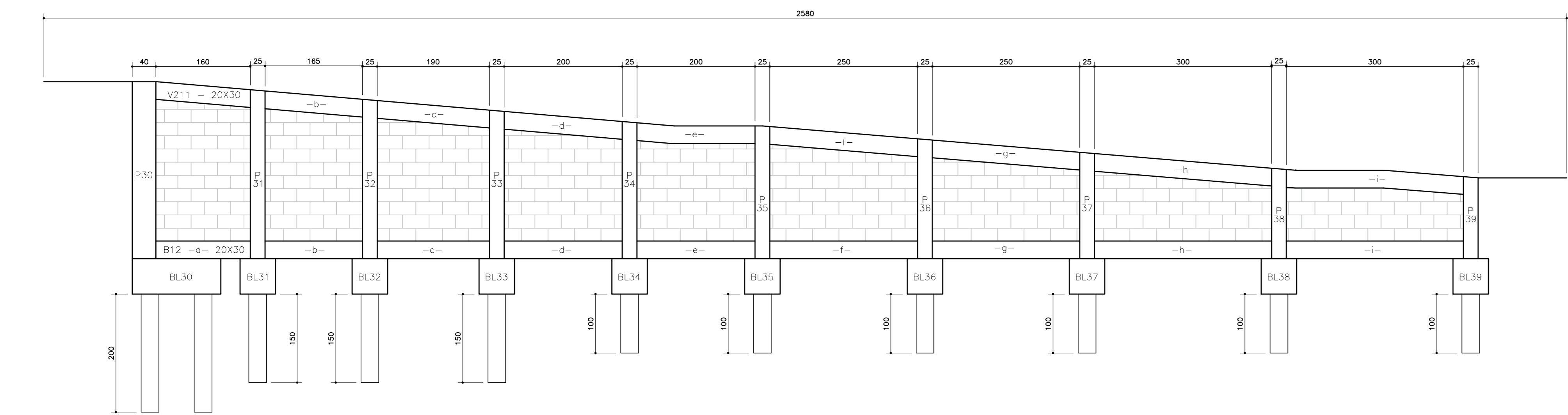
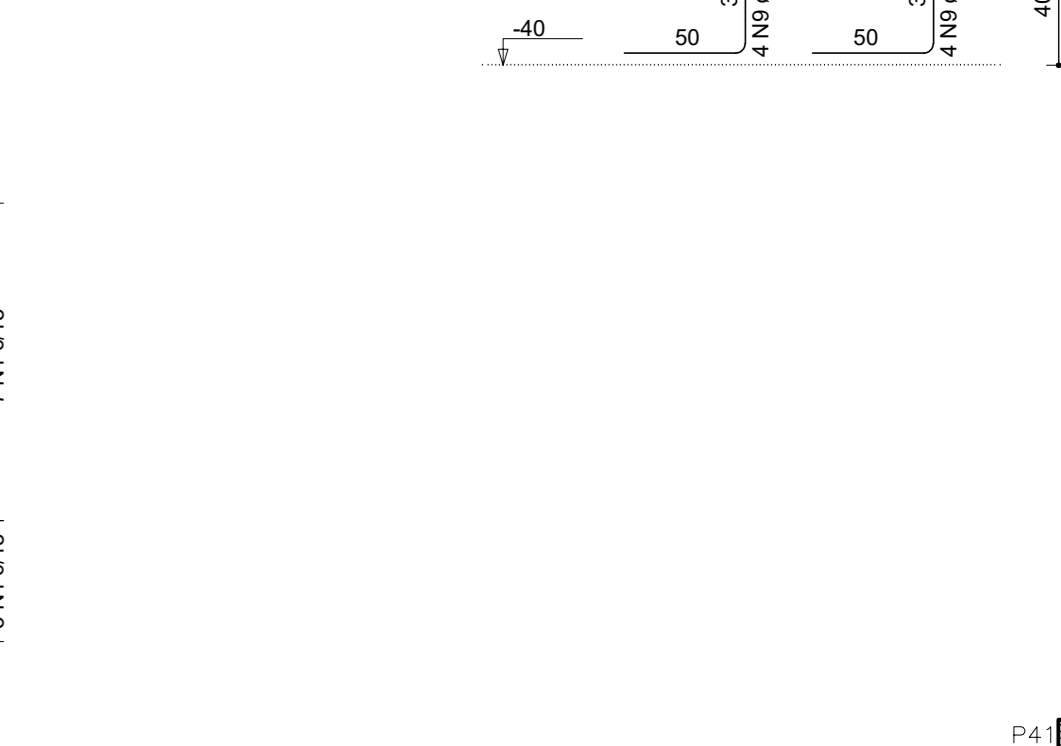
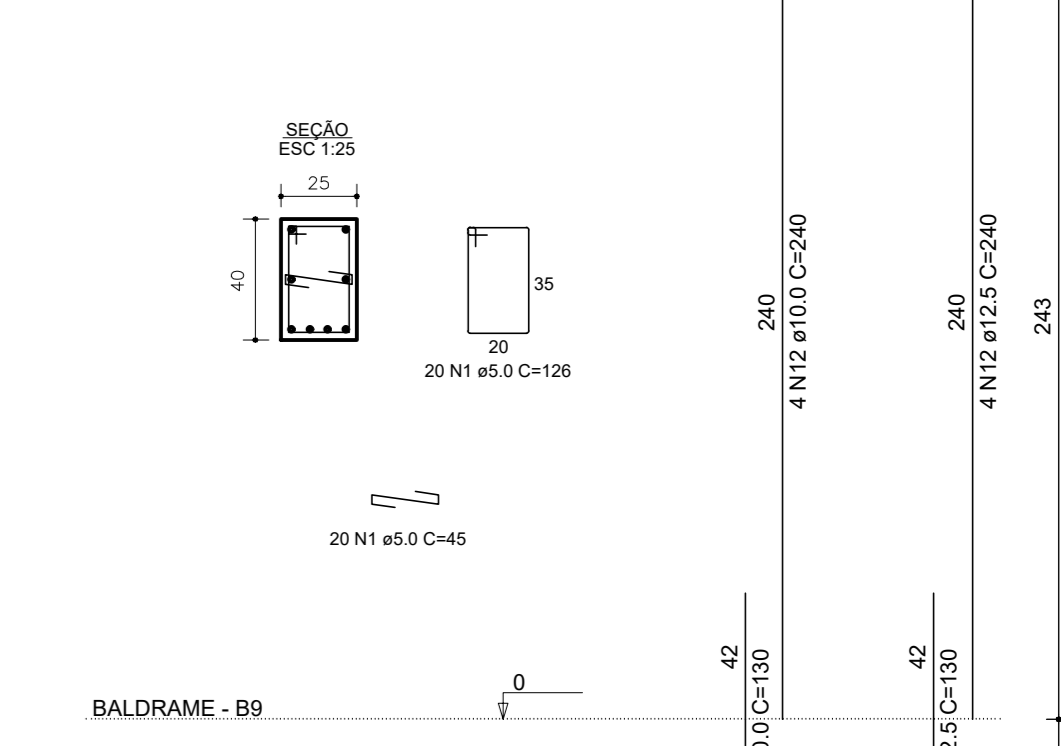
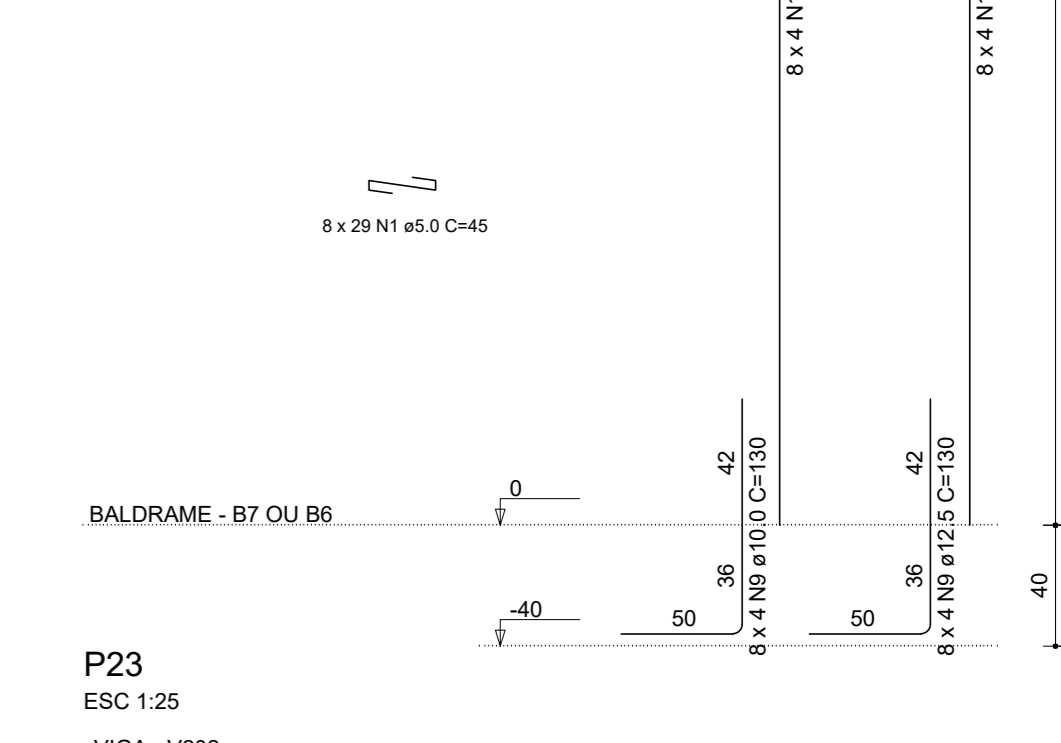
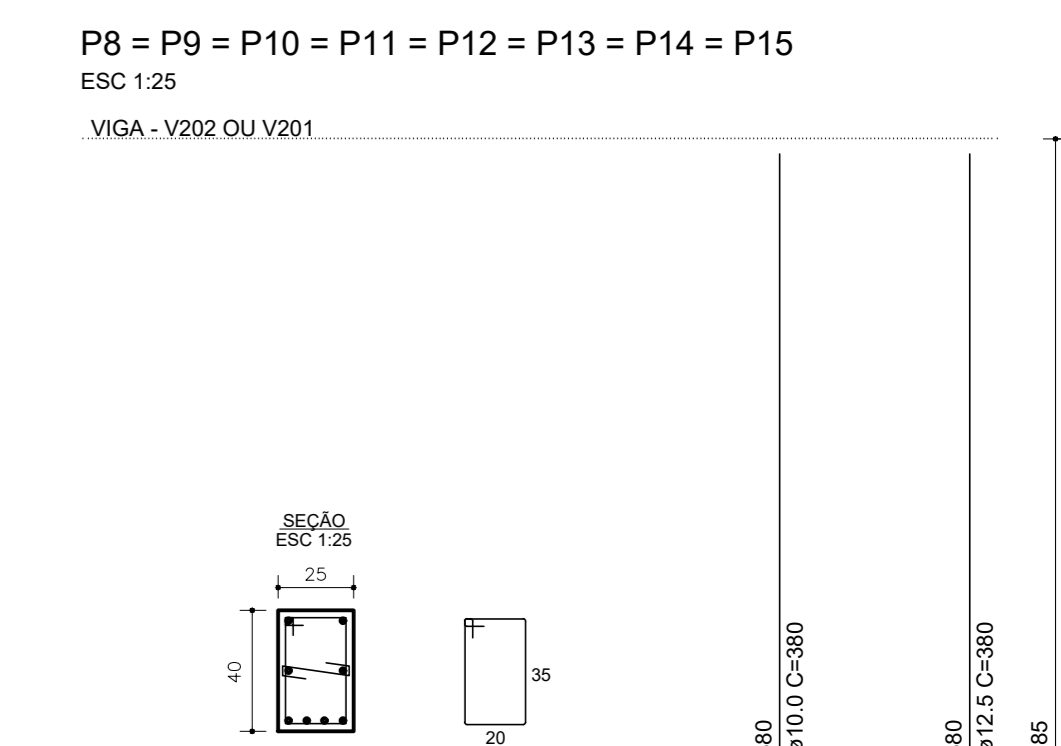
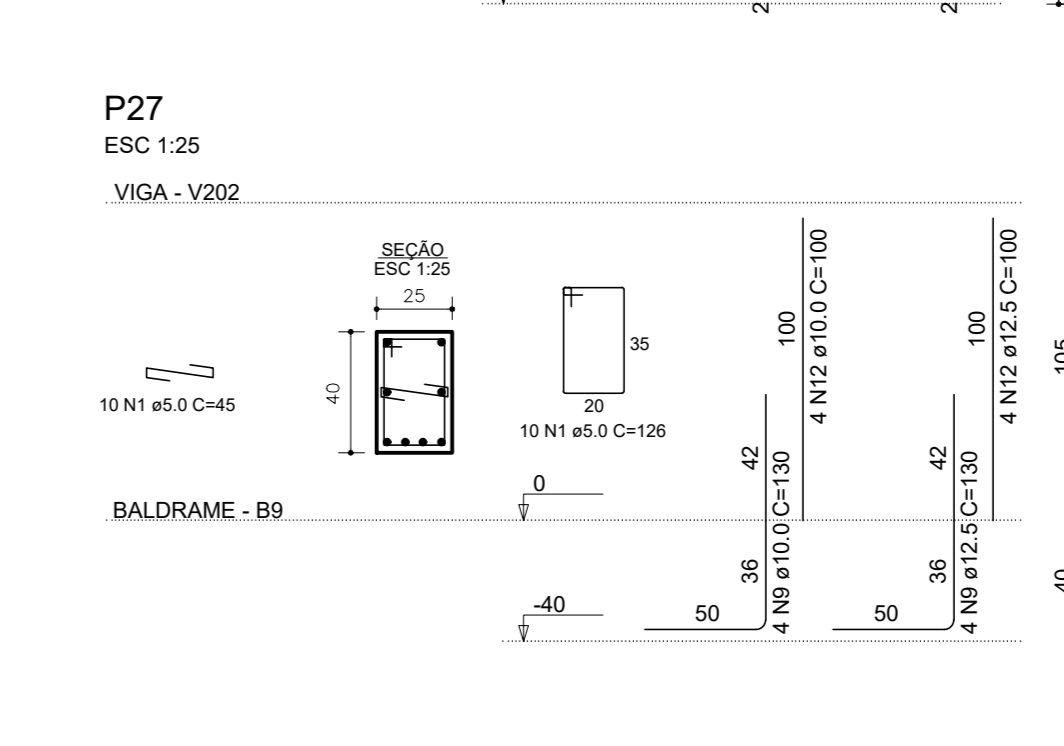
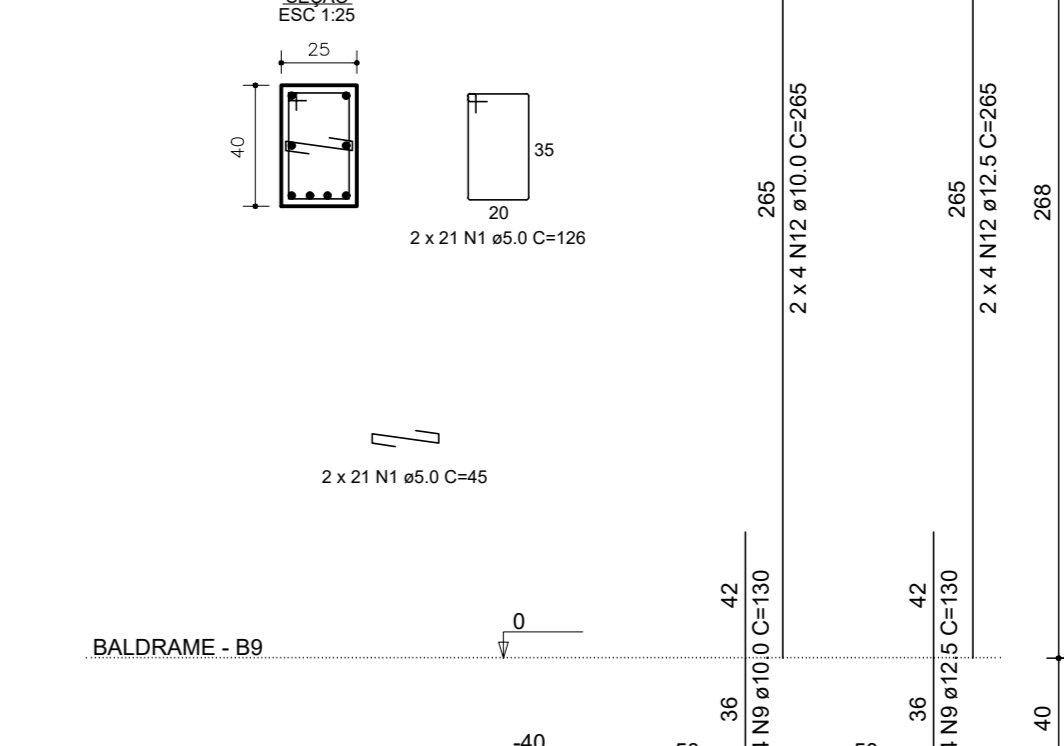
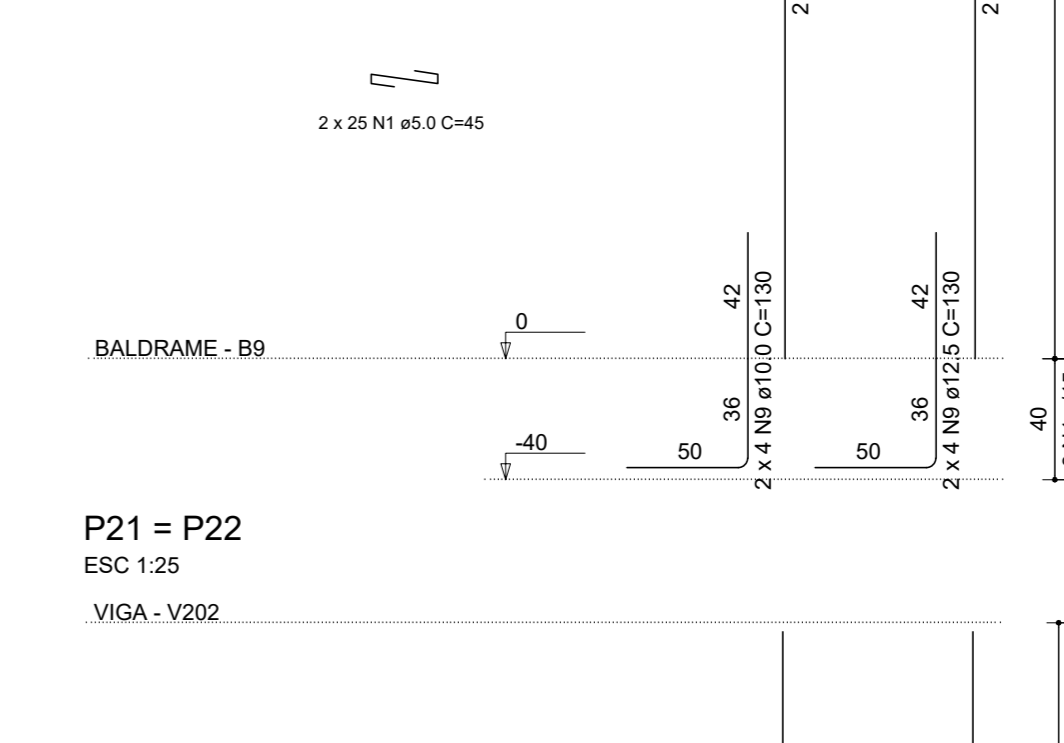
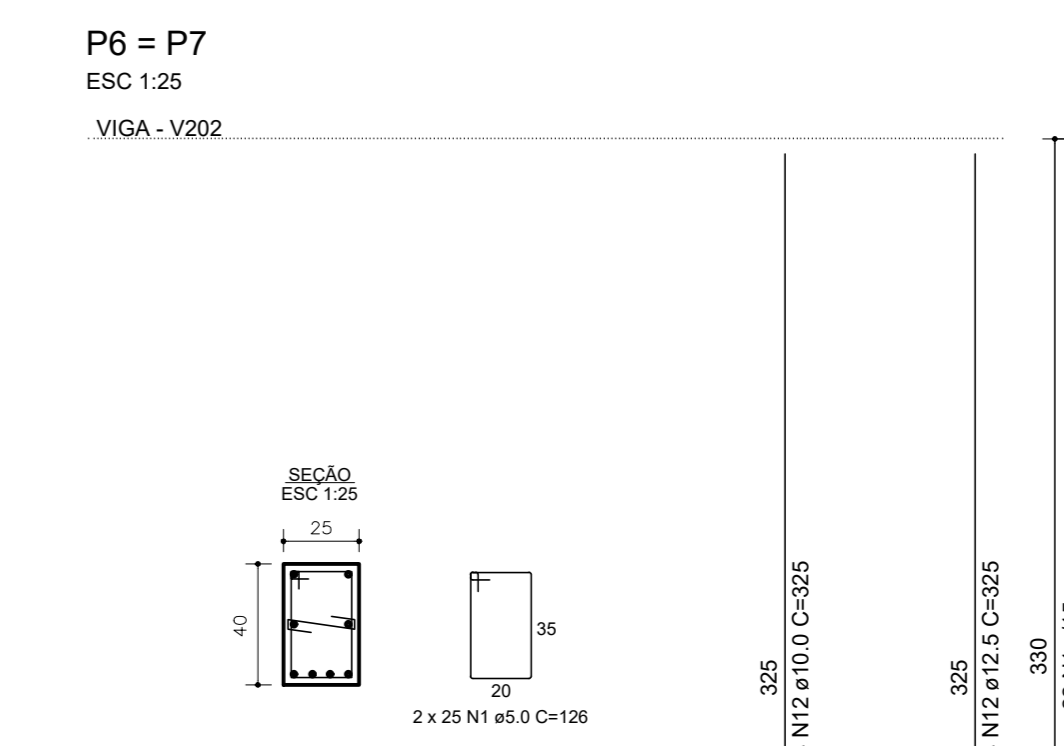
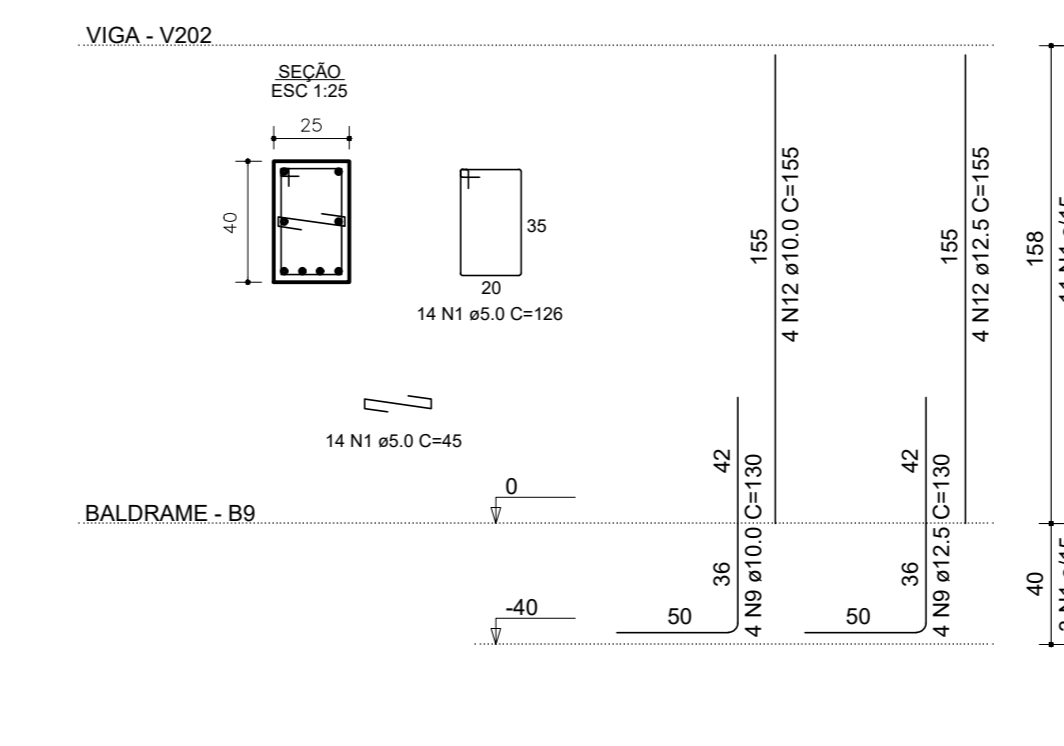
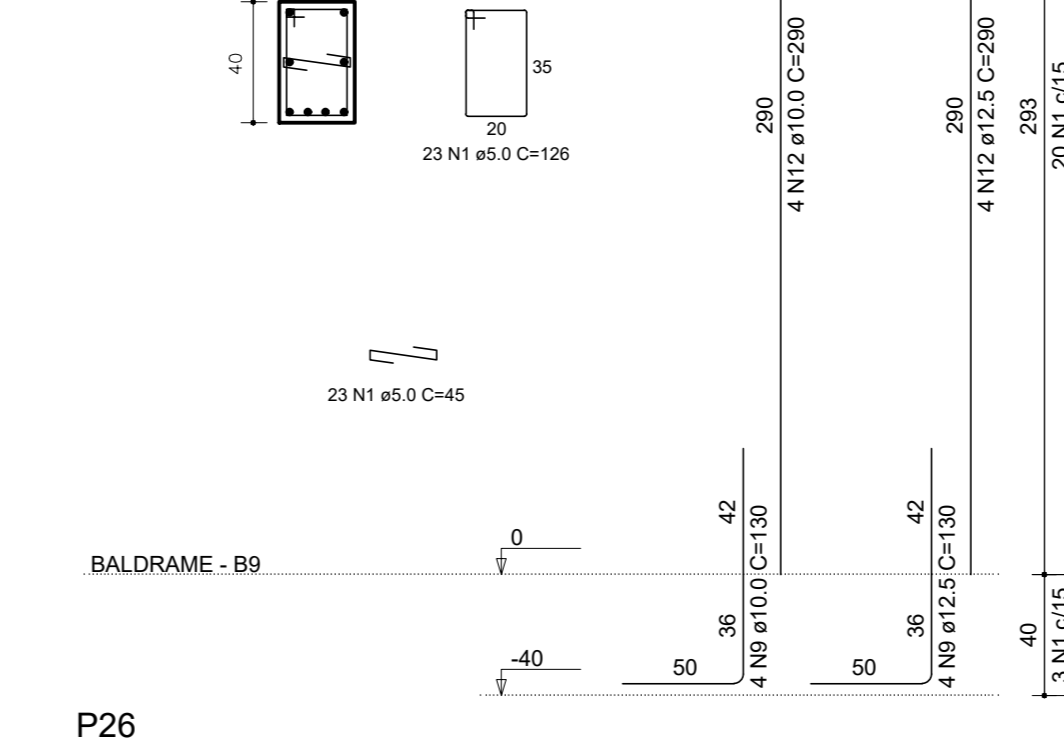
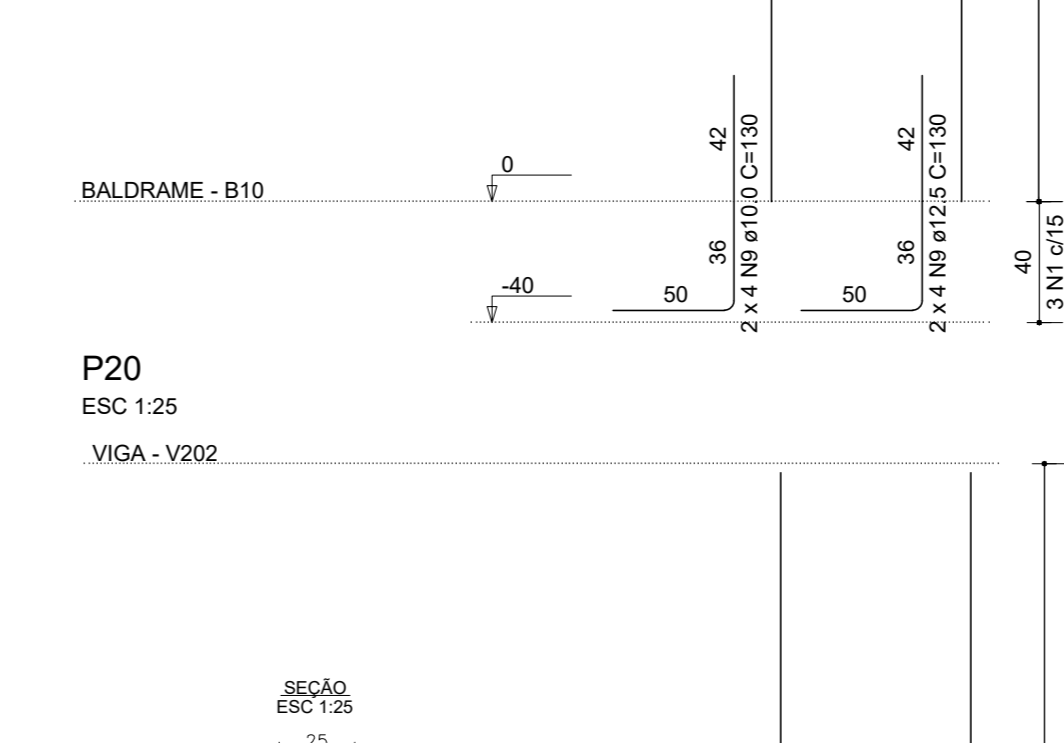
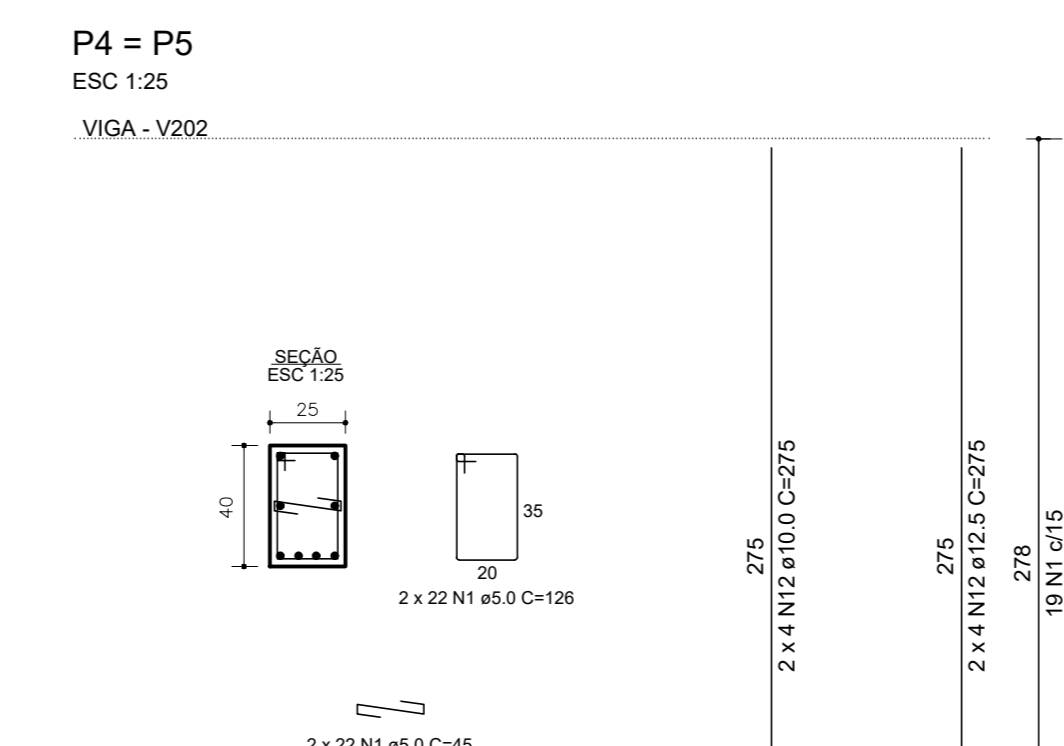
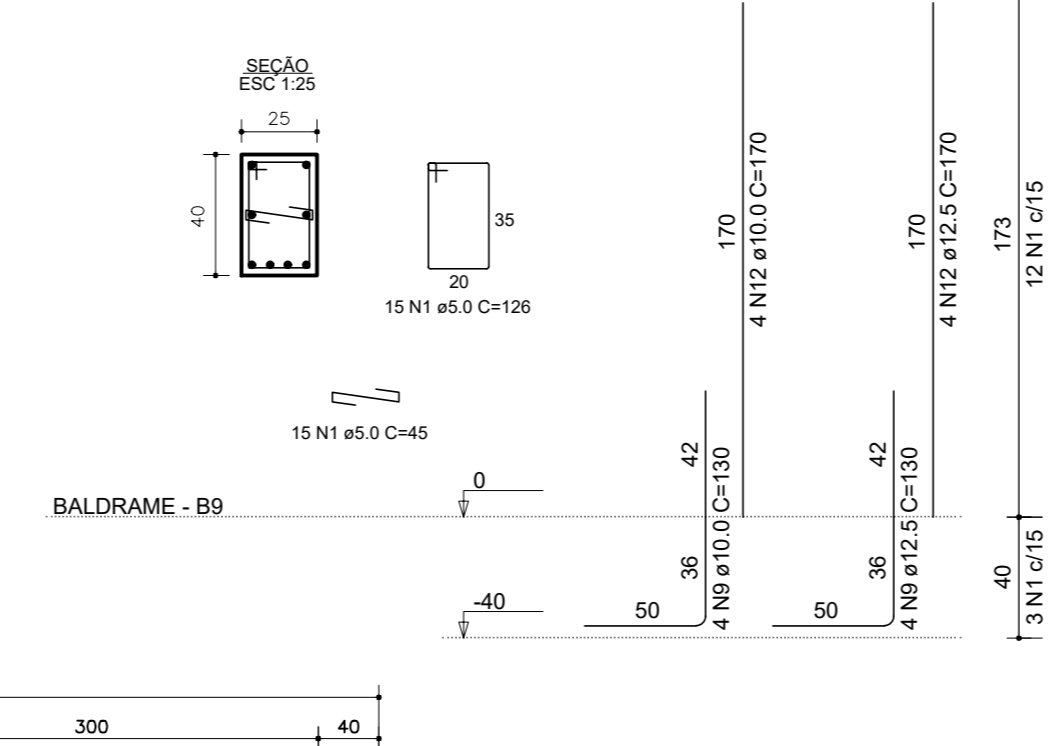
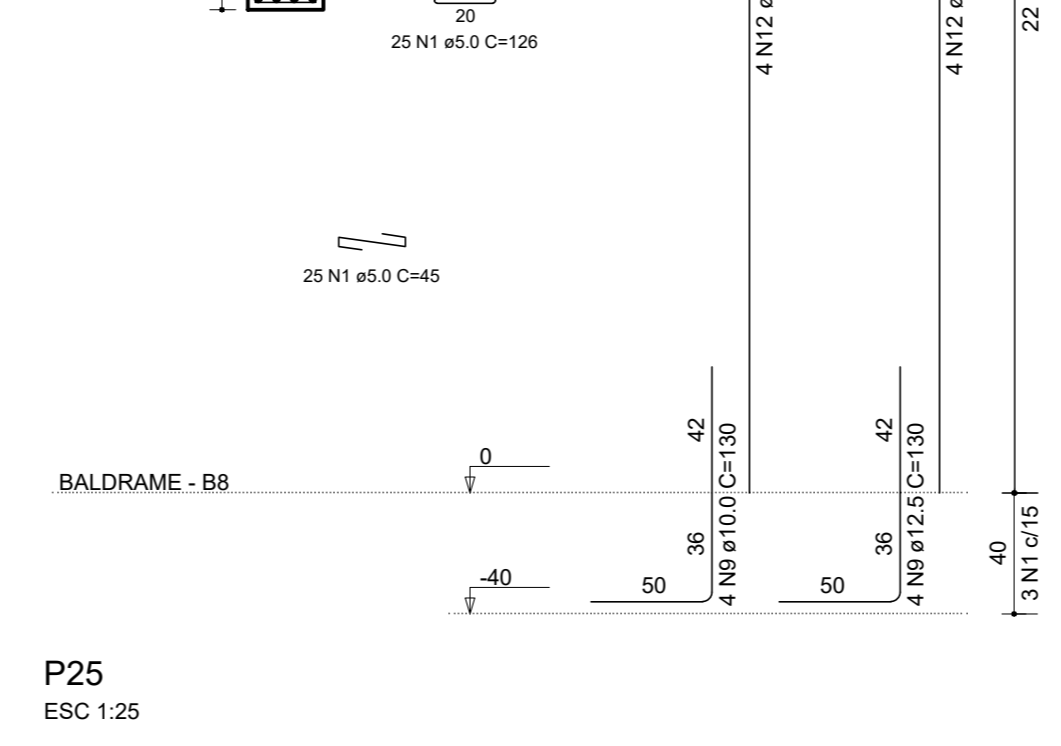
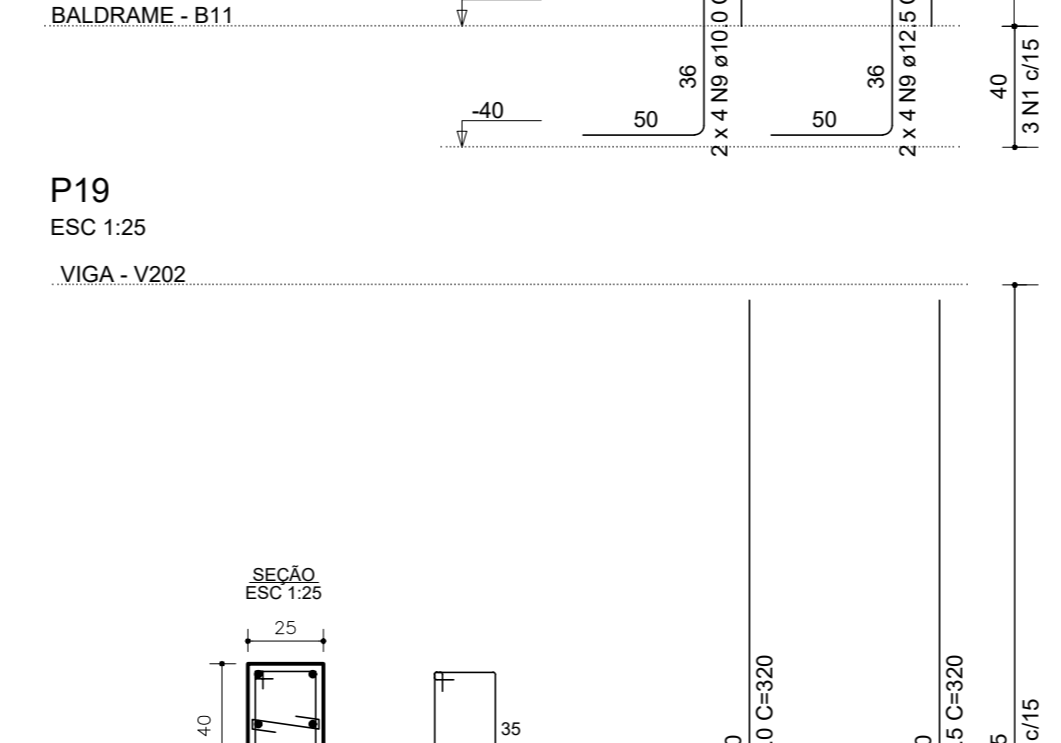
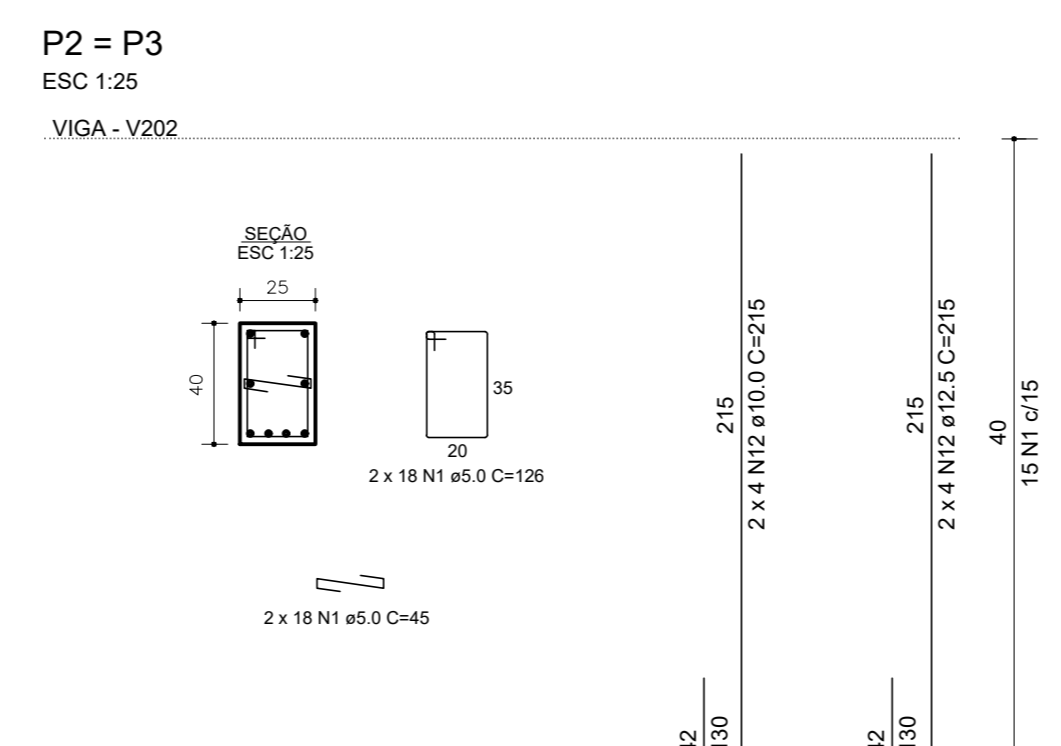
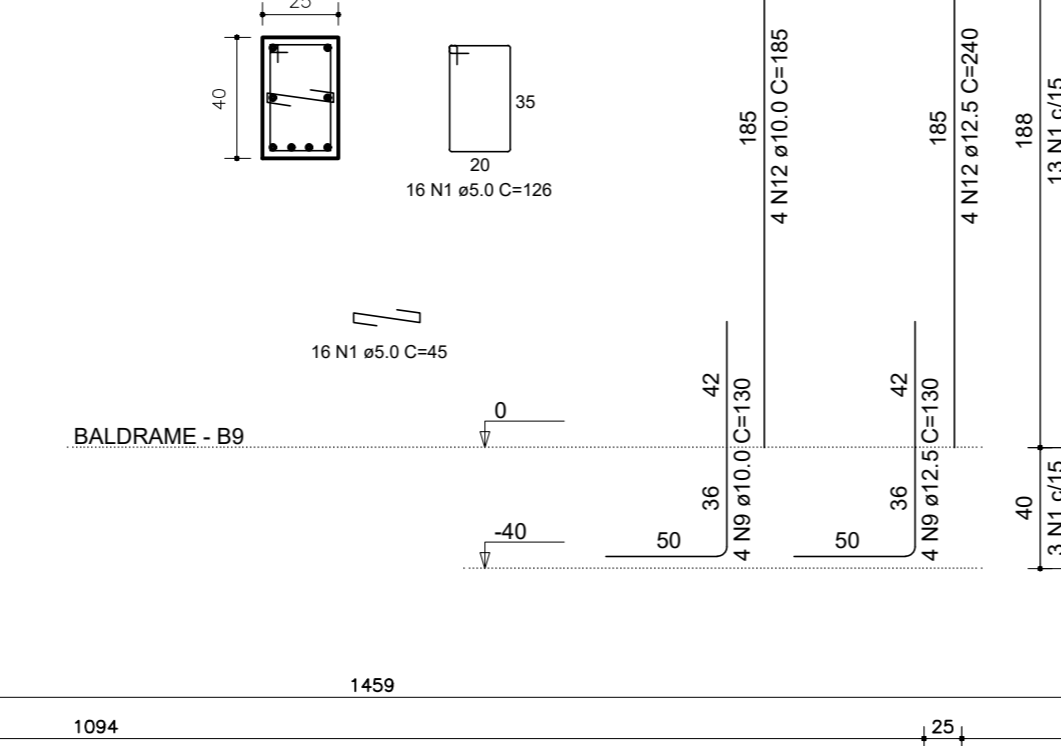
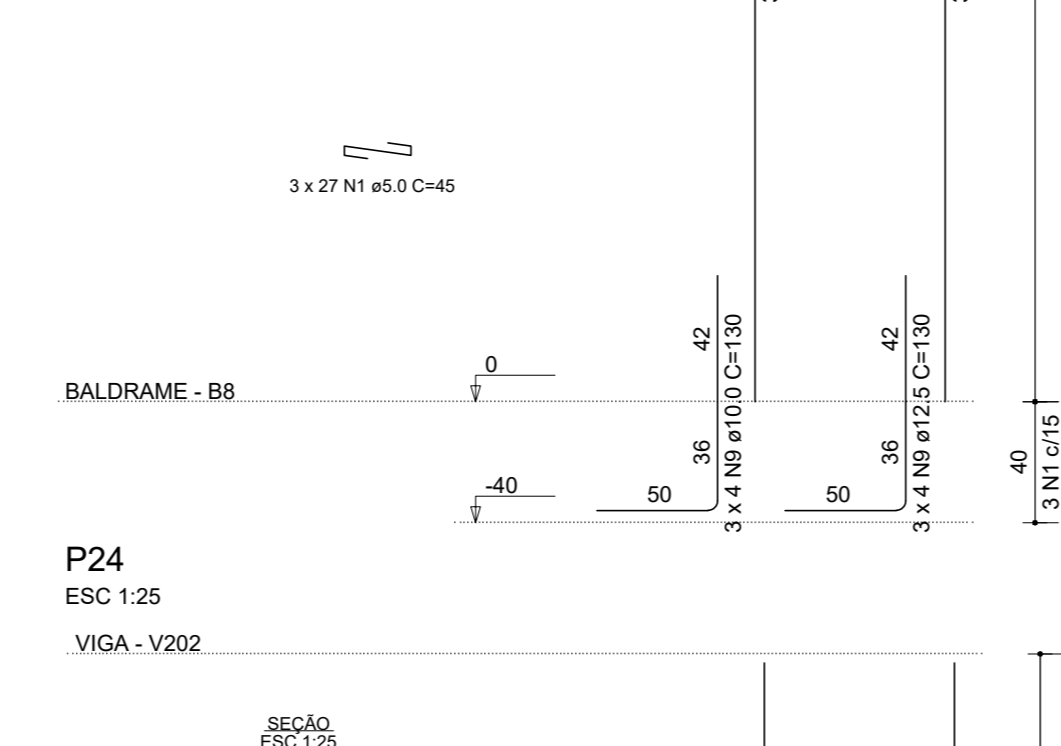
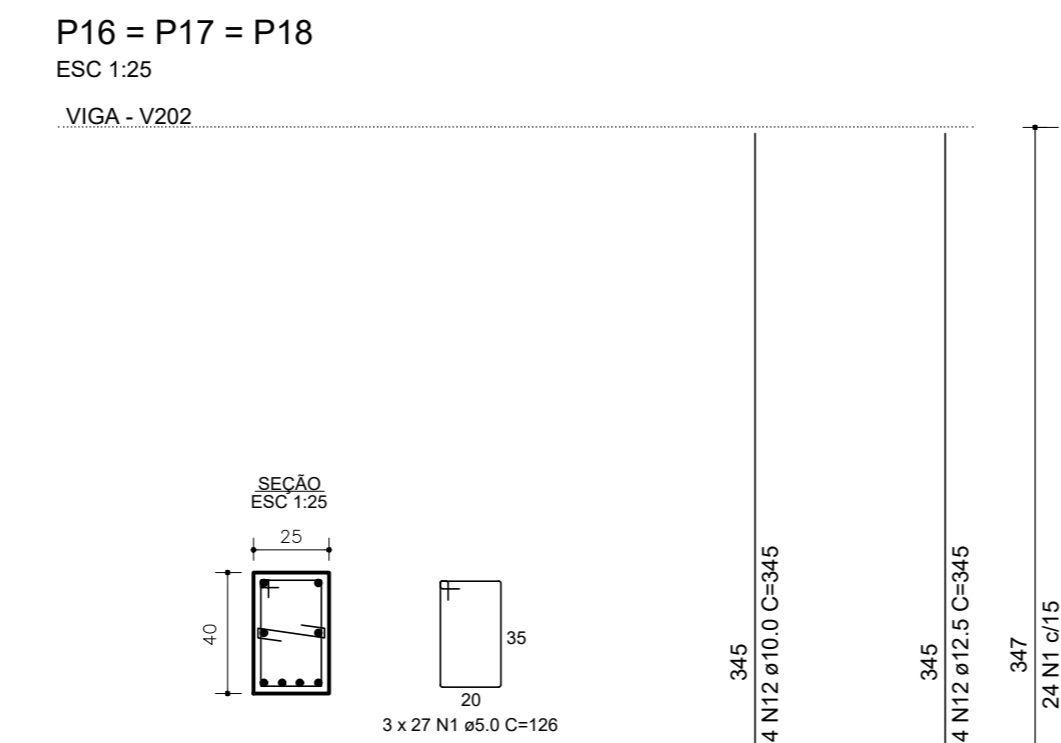
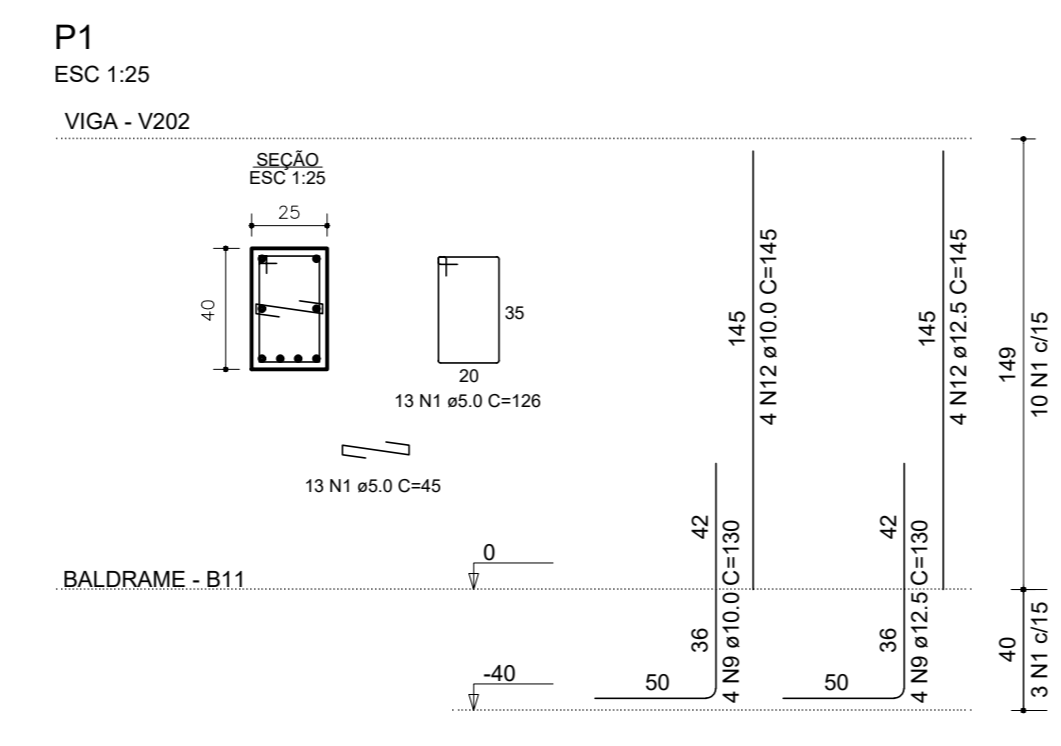
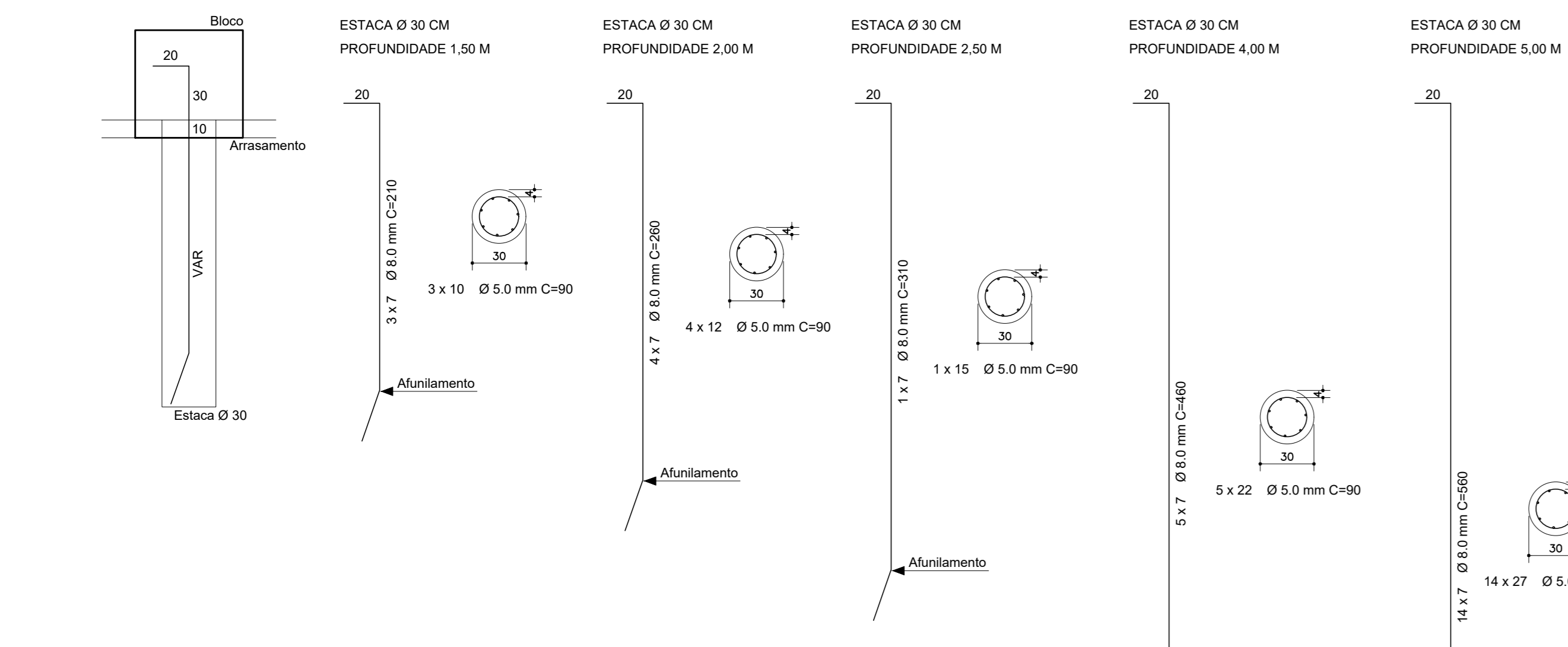
**13 ARRIMO RAMPA LATERAL 2**  
ESCALA 1:50

**11 FORMA RAMPA**  
ESCALA 1:50

**13 ARRIMO RAMPA LATERAL 2**  
ESCALA 1:50

**12 ARRIMO RAMPA LATERAL 1**  
ESCALA 1:50

**14 FORMA FUNDAÇÃO RAMPA**  
ESCALA 1:50



- NOTAS**
1. ESTE PROJETO É PROPRIEDADE DO PROJETISTA REGISTRADO NO SELO. CONFORME LEI Nº 5194/66 NÃO DEVE SER UTILIZADO PARA QUALQUER OUTRA FINALIDADE QUE NÃO SE RELACIONE COM A EXECUÇÃO DA PRESENTE EDIFICAÇÃO, SENDO TERMINANTEMENTE VEDADA SUA COLOCAÇÃO A DISPOSIÇÃO DE TERCEIROS.
  2. O PROJETISTA NÃO SE RESPONSABILIZA POR EVENTUAIS ALTERAÇÕES DESSE PROJETO DURANTE SUA EXECUÇÃO, QUALQUER MODIFICAÇÃO, O MESMO DEVE SER CONTACTADO.
  3. ESTE PROJETO FOI BASEADO NO LAY-OUT E INFORMAÇÕES FORNEDIDAS PELO ARQUITETO OU PROPRIETÁRIO.
  4. QUALQUER MODIFICAÇÃO OU DÚVIDA DEVERÁ SER IMEDIATAMENTE COMUNICADA POR ESCRITO AO PROJETISTA.

**PREFEITURA MUNICIPAL DE FORMIGA**  
SECRETARIA MUNICIPAL DE EDUCAÇÃO E ESPORTES  
TRAVESSA PADRE LEÃO JOÃO DEHON, Nº 60, SANTA TEREZA  
FORMIGA - MG - CEP. 35578-090  
(37) 3328-1800 / 3322-4106

**PROJETO ESTRUTURAL** FOLHA:  
02 / 03

ENDEREÇO: RUA HERMINIO PIO DA SILVA, Nº 627, VILA NIRMATELE  
CIDADE: FORMIGA - MG  
DATA: SETEMBRO/2023

PROPRIETÁRIO:  
EUGÊNIO VILELA JUNIOR  
PREFEITO MUNICIPAL DE FORMIGA  
AUTOR DO PROJETO E RESPONSÁVEL TÉCNICO:

JONATHAS GABRIEL MIRANDA RODRIGUES  
CREA: MG 254327/D

CONTEÚDO DA FOLHA:  
PROJETO ESTRUTURAL MURO DE ARRIMO E RAMPA  
(ESTACAS, PILARES, FUNDAÇÃO, FORMAS E DETALHES  
RAMPAS)

ESCALA:  
INDICADA

FORMATO:  
A0