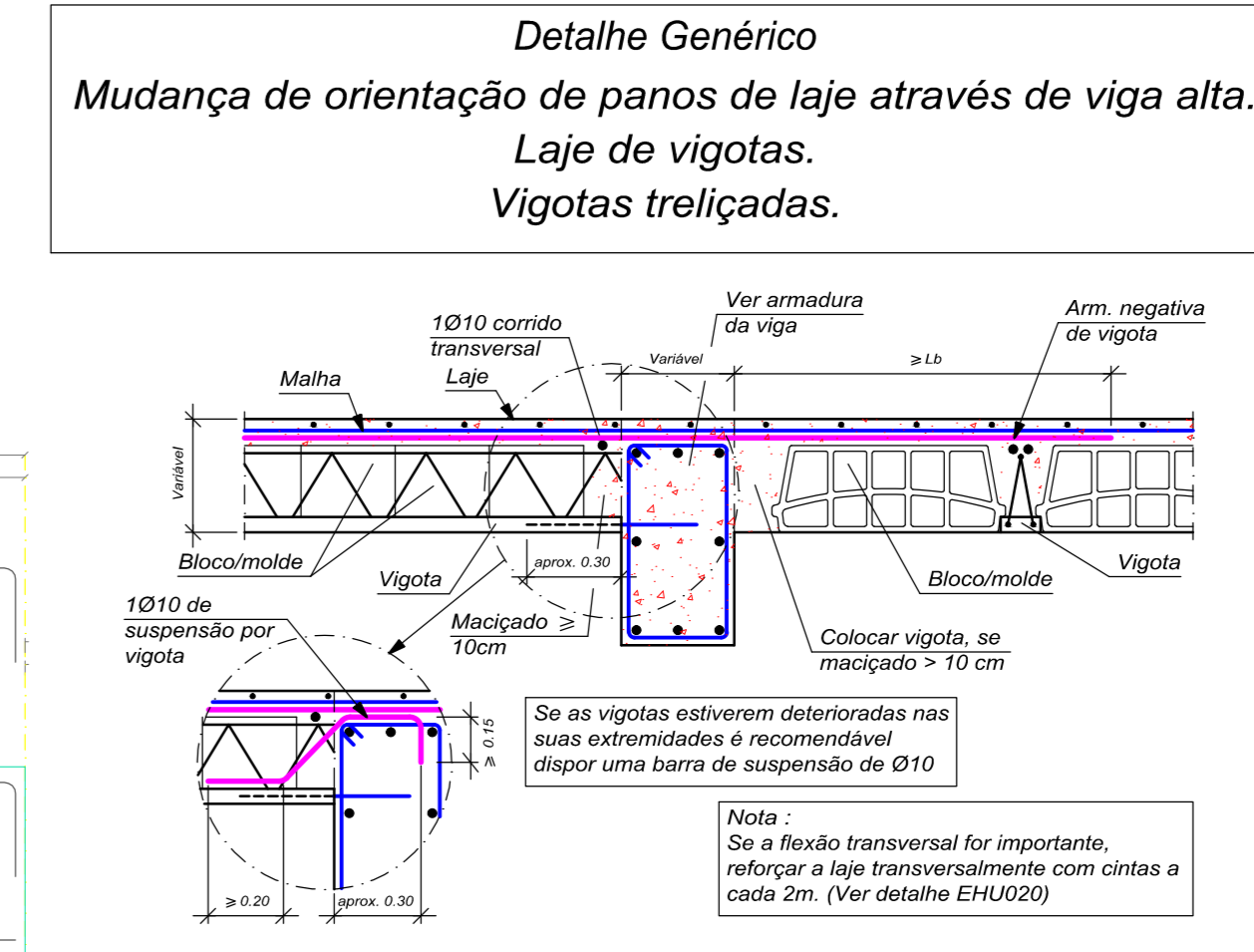
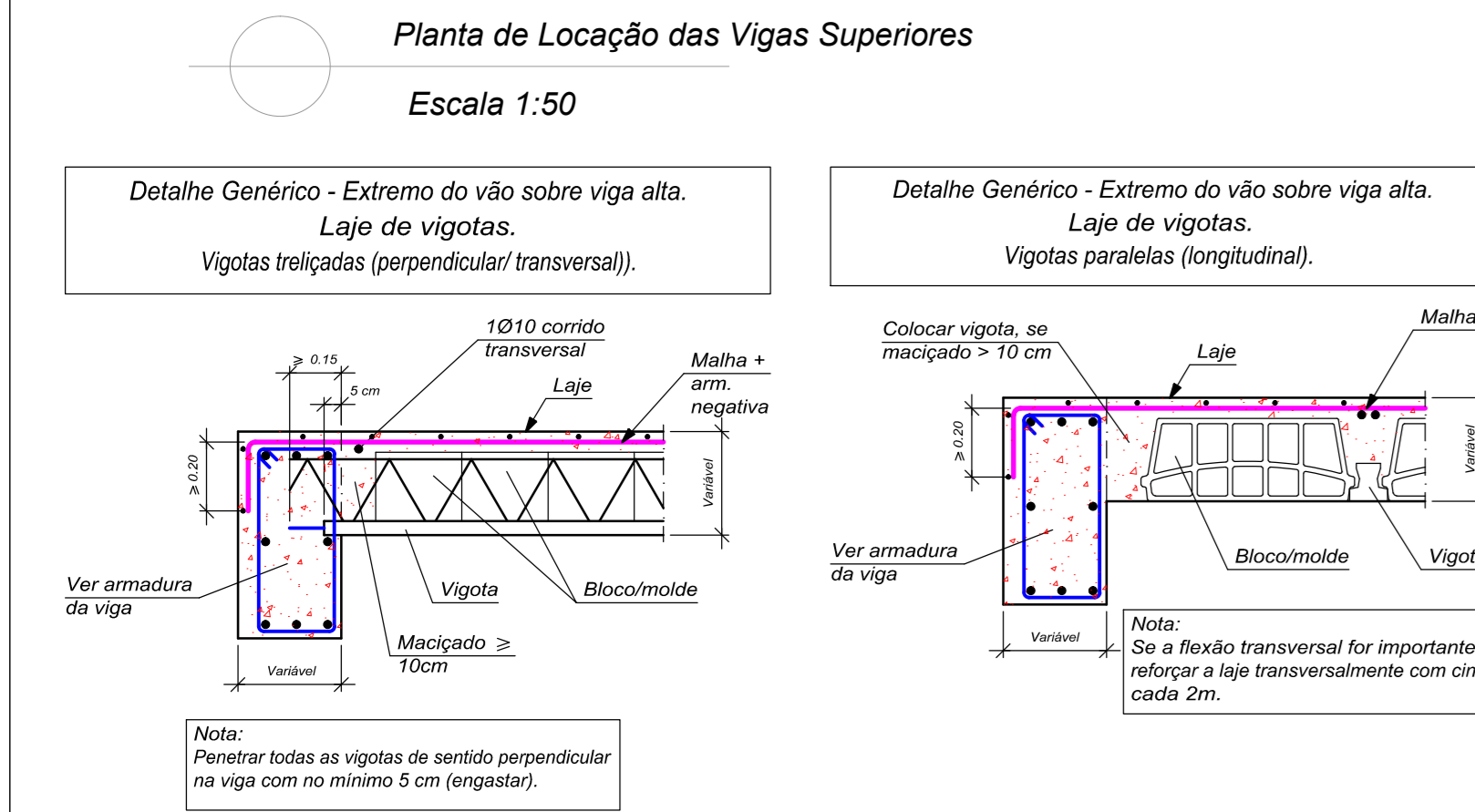
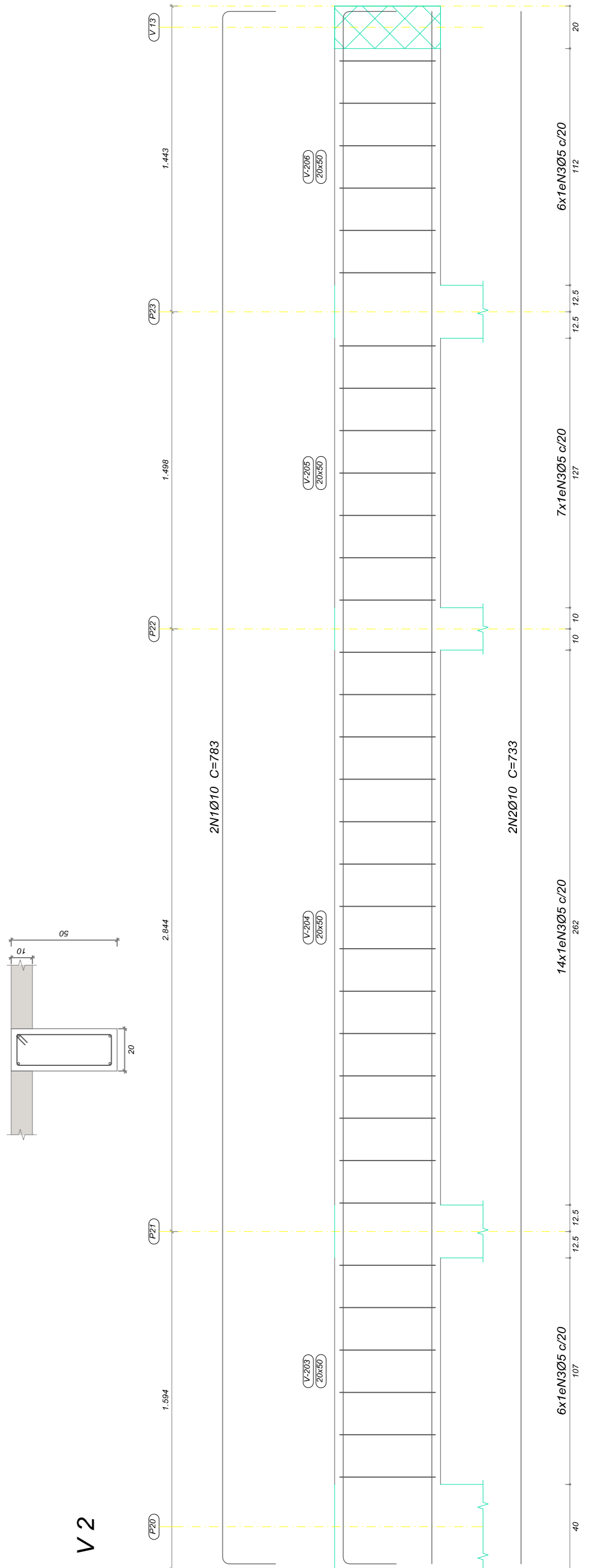
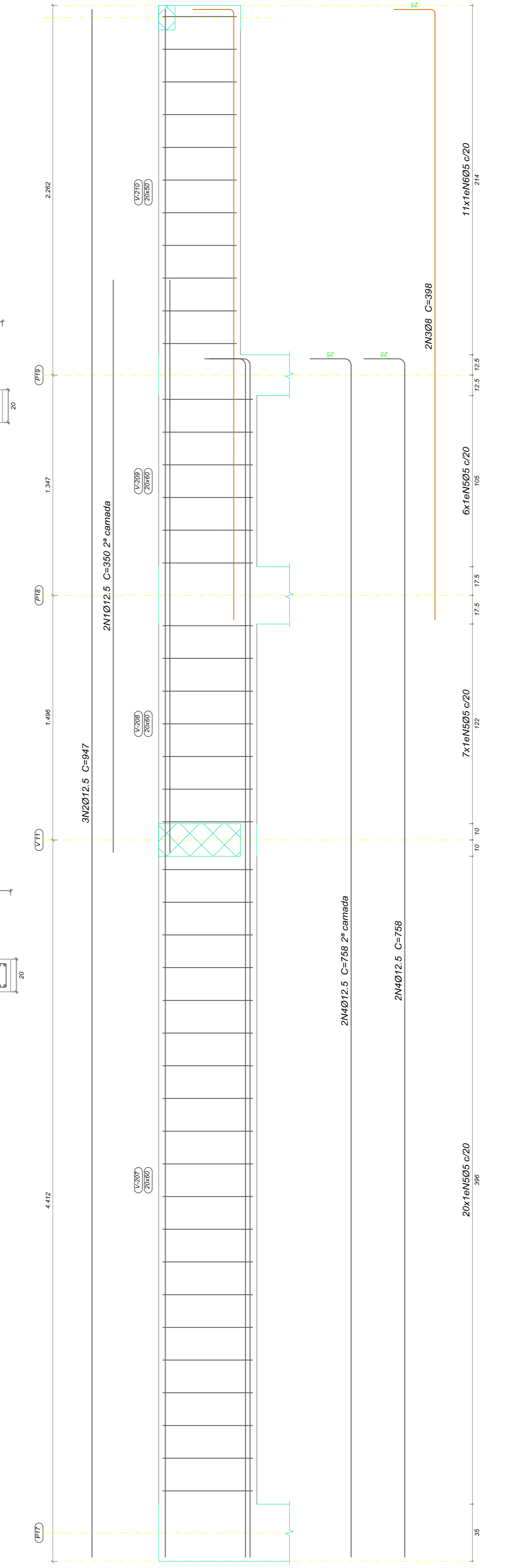
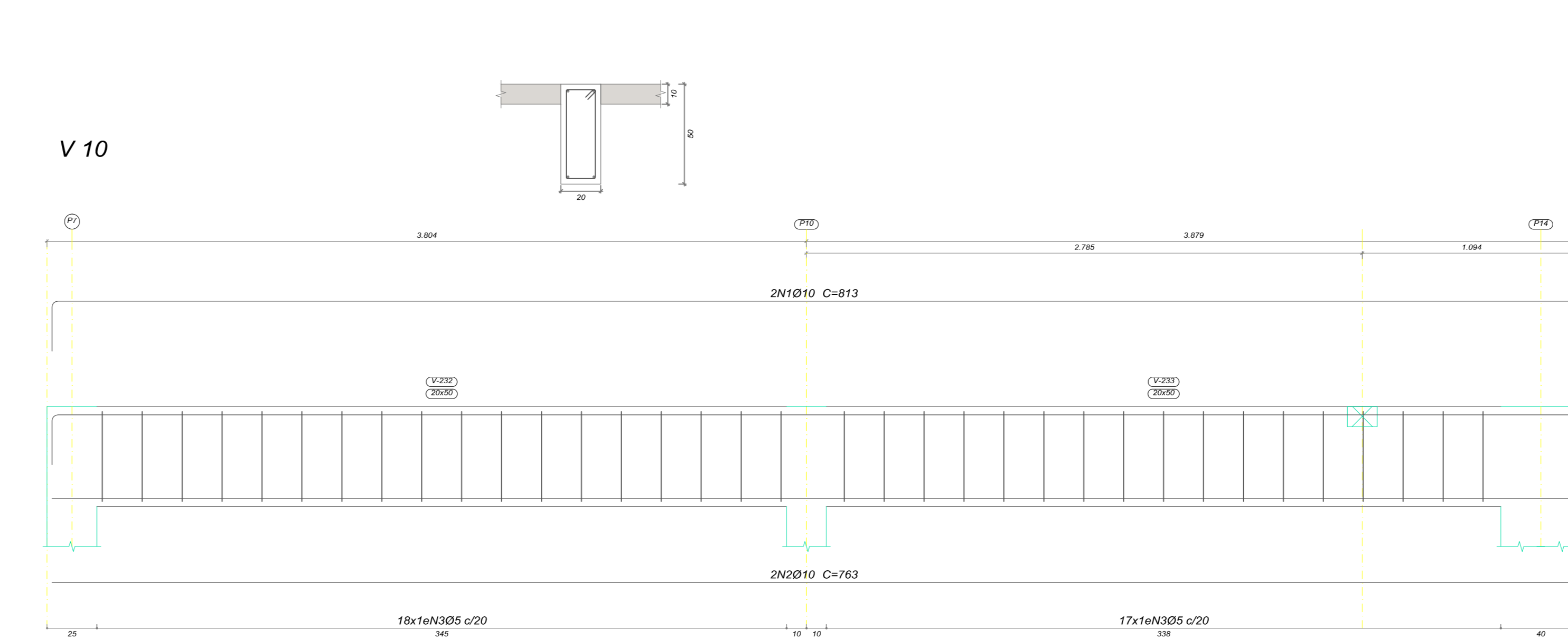
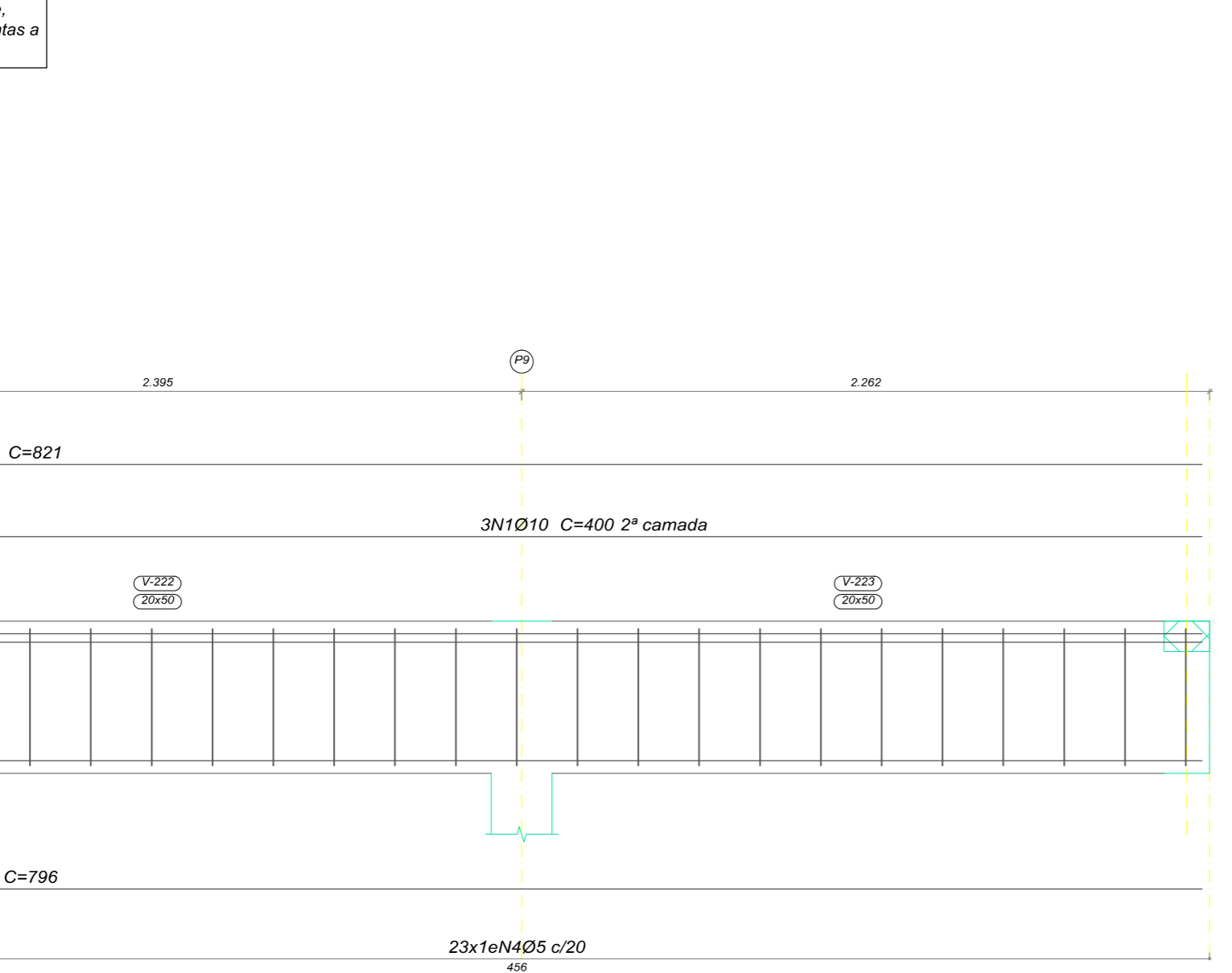
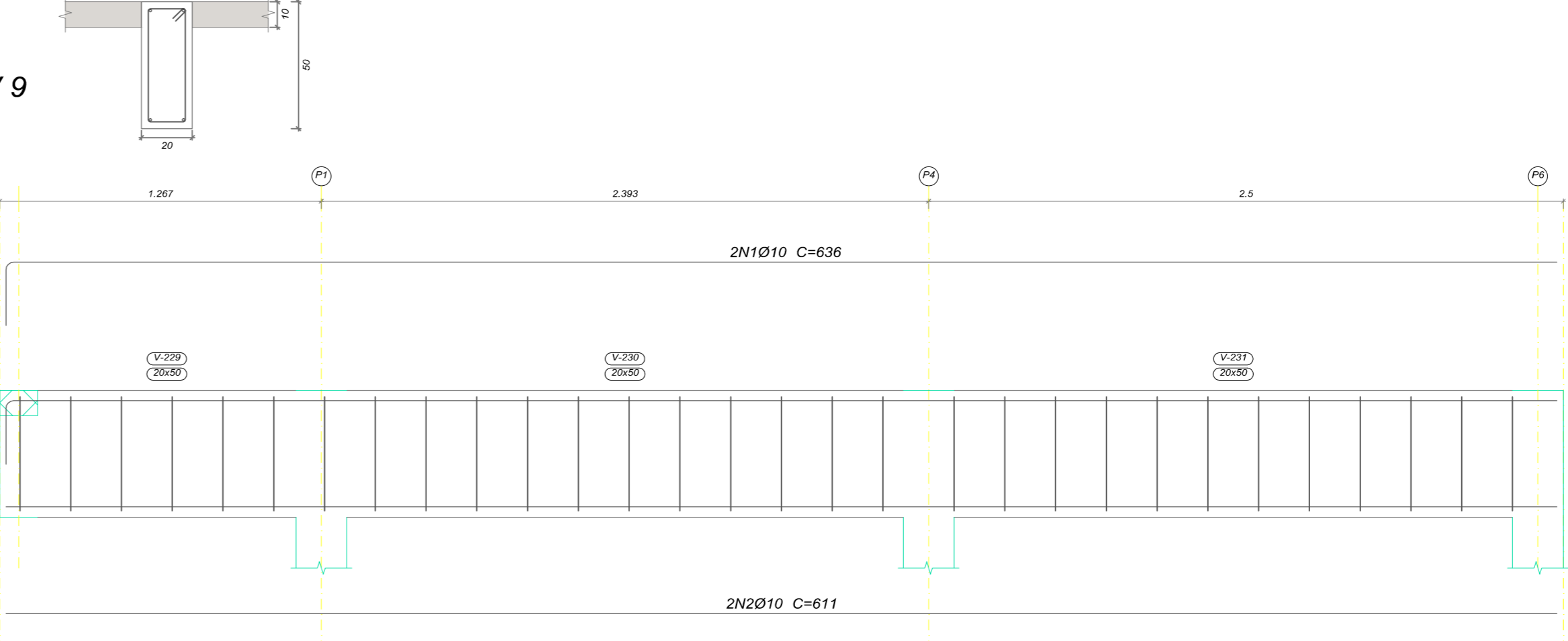
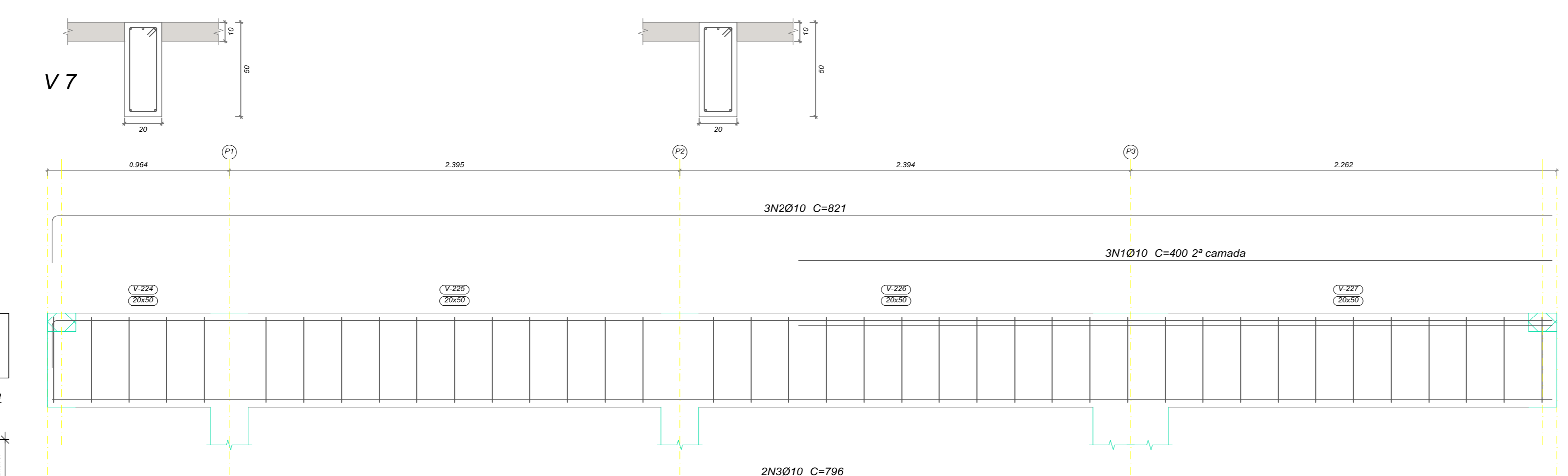
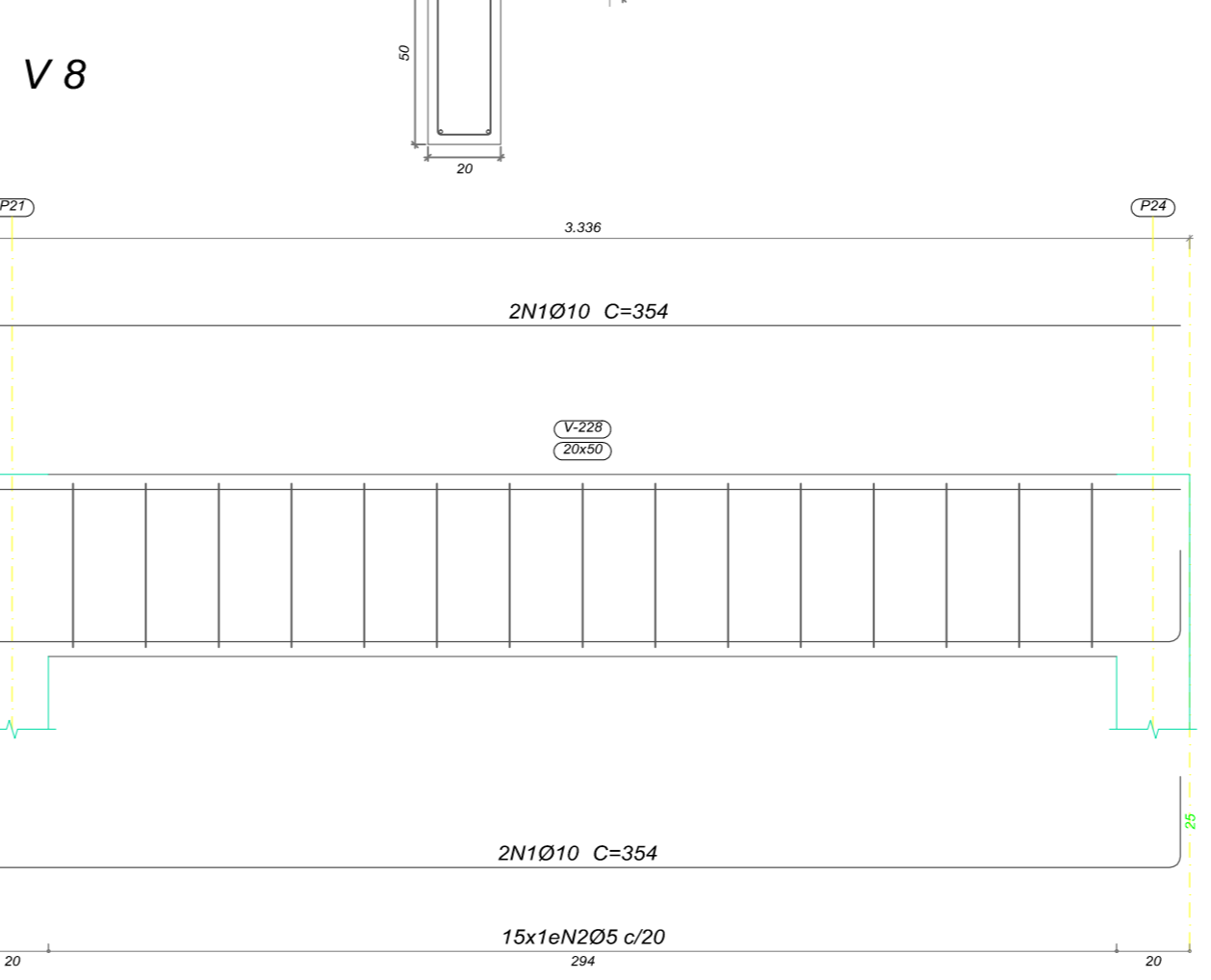
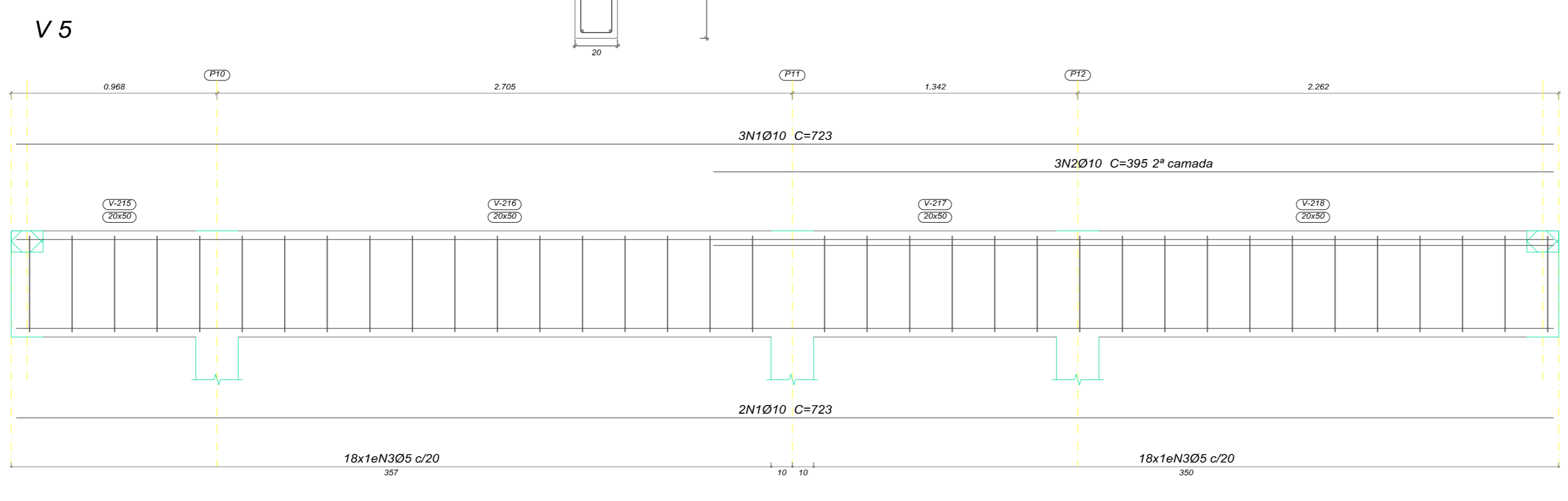
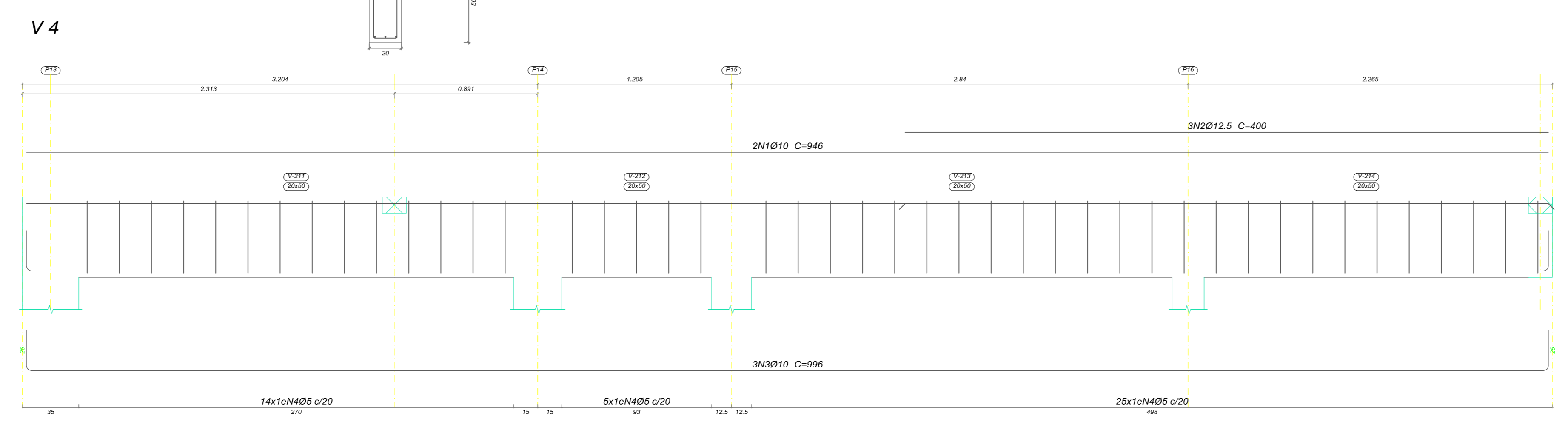
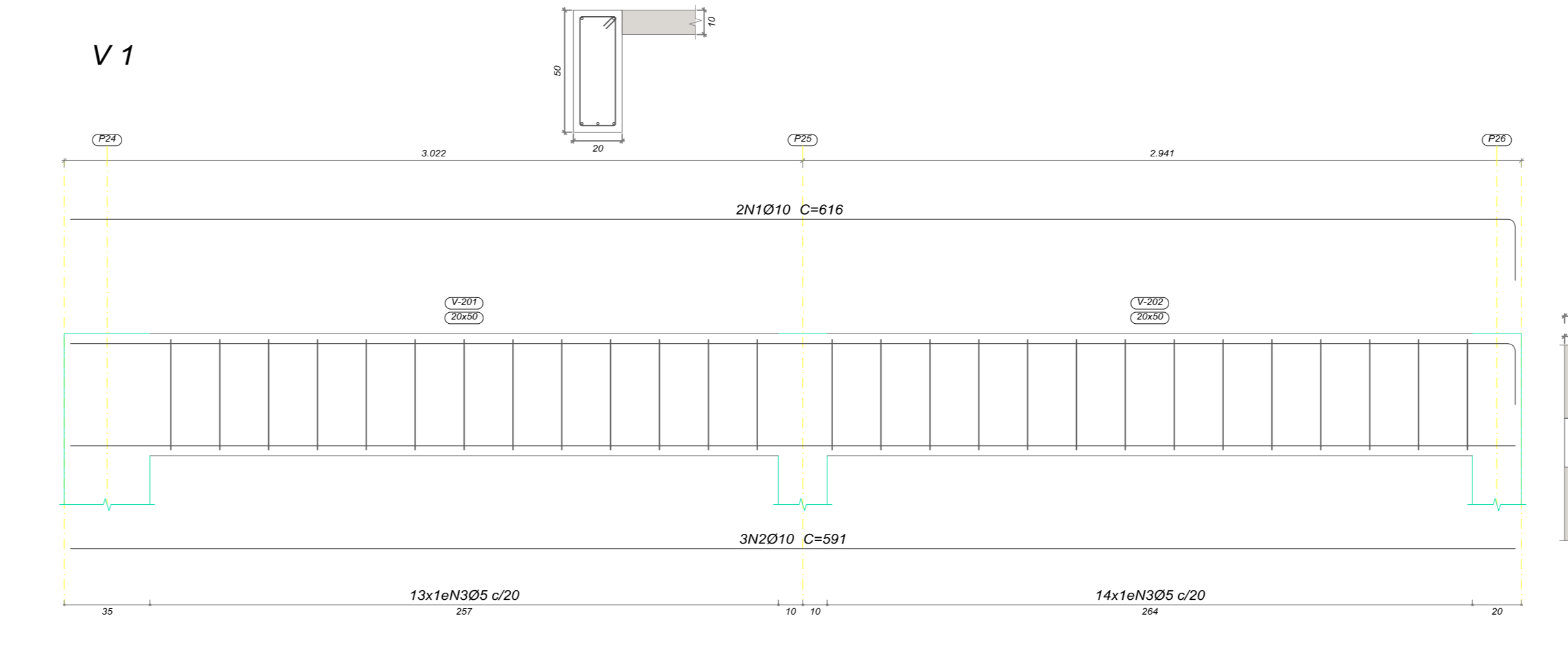
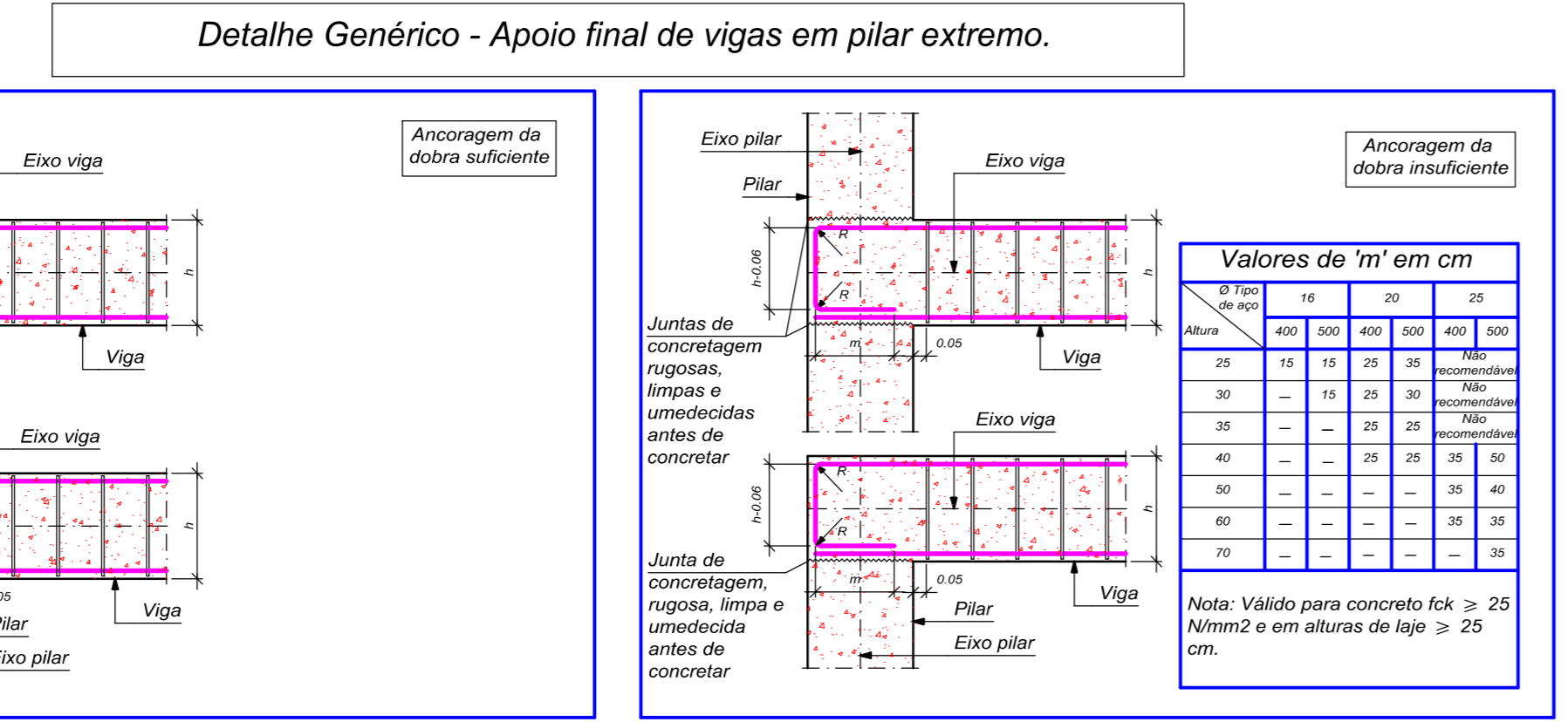
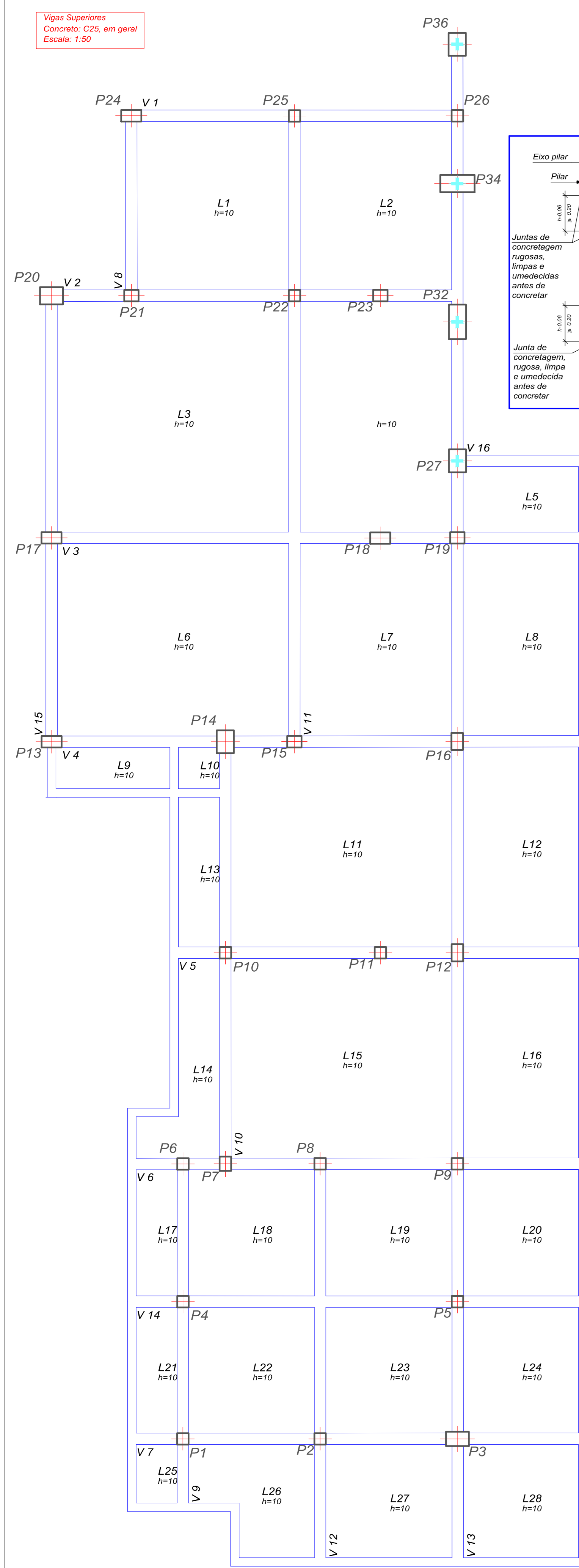


Detalhamento da armadura das Vigas Superiores - Armadura Logitudinal e Transversal



Resumo de Aço em Vigas Superiores

Elemento	Pos.	Diam.	Q.	Esqema (cm)	Comp. (cm)	Total (cm)	CA-50 (kg)	CA-60 (kg)
V1	1	Ø10	2	385	770	1540	7.4	7.4
	2	Ø10	3	385	1155	2205	10.9	10.9
	3	Ø5	27	385	10395	10395	5.4	5.4
Total+10%					12615	20.4	20.4	20.4
V2	1	Ø10	2	385	770	1540	7.4	7.4
	2	Ø10	2	385	770	1540	7.4	7.4
	3	Ø5	33	385	12615	12615	6.6	6.6
Total+10%					20170	20.6	20.6	20.6
V3	1	Ø12.5	2	385	770	1540	6.7	6.7
	2	Ø12.5	3	385	1155	2205	27.4	27.4
	3	Ø8	2	385	770	1540	3.1	3.1
	4	Ø12.5	4	385	1540	3080	29.2	29.2
	5	Ø5	33	385	12615	12615	7.7	7.7
6	Ø5	11	385	4235	4235	2.2	2.2	
Total+10%					20170	73.0	73.0	73.0
V4	1	Ø10	2	385	770	1540	11.7	11.7
	2	Ø12.5	3	385	1155	2205	11.6	11.6
	3	Ø10	3	385	1155	2205	18.4	18.4
	4	Ø5	44	385	16940	16940	8.8	8.8
Total+10%					20170	45.9	45.9	45.9
V5	1	Ø10	5	385	1925	3850	22.3	22.3
	2	Ø10	3	385	1155	2205	7.3	7.3
	3	Ø5	36	385	13860	13860	7.2	7.2
Total+10%					20170	32.6	32.6	32.6
V6	1	Ø10	3	385	1155	2205	7.4	7.4
	2	Ø10	2	385	770	1540	10.1	10.1
	3	Ø10	2	385	770	1540	9.8	9.8
	4	Ø5	40	385	15400	15400	8.0	8.0
Total+10%					20170	32.6	32.6	32.6
V7	1	Ø10	3	385	1155	2205	30.0	30.0
	2	Ø10	3	385	1155	2205	15.2	15.2
	3	Ø10	2	385	770	1540	9.8	9.8
	4	Ø5	39	385	14955	14955	7.8	7.8
Total+10%					20170	35.6	35.6	35.6
V8	1	Ø10	4	385	1540	3080	8.7	8.7
	2	Ø5	15	385	5775	5775	3.0	3.0
Total+10%					20170	9.6	9.6	9.6
V9	1	Ø10	2	385	770	1540	7.6	7.6
	2	Ø10	2	385	770	1540	7.5	7.5
	3	Ø5	30	385	11550	11550	6.0	6.0
Total+10%					20170	16.8	16.8	16.8
V10	1	Ø10	2	385	770	1540	10.0	10.0
	2	Ø10	2	385	770	1540	9.4	9.4
	3	Ø5	35	385	13475	13475	7.0	7.0
Total+10%					20170	27.3	27.3	27.3
Total					300.6	75.5	75.5	75.5

OBS: Vide outros detalhes genéricos adicionais na prancha 6