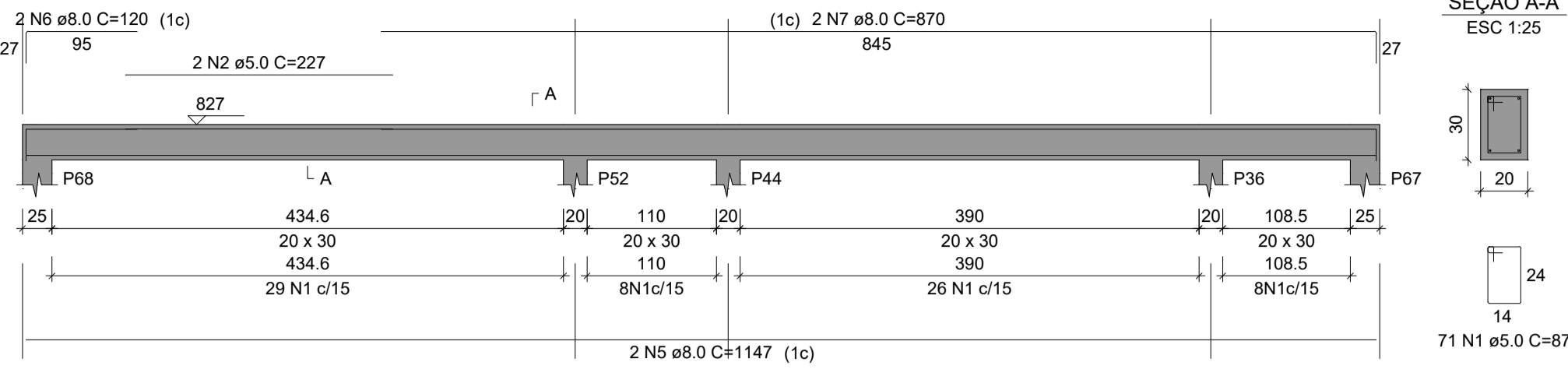


VP1
ESC 1:50



RELAÇÃO DO AÇO

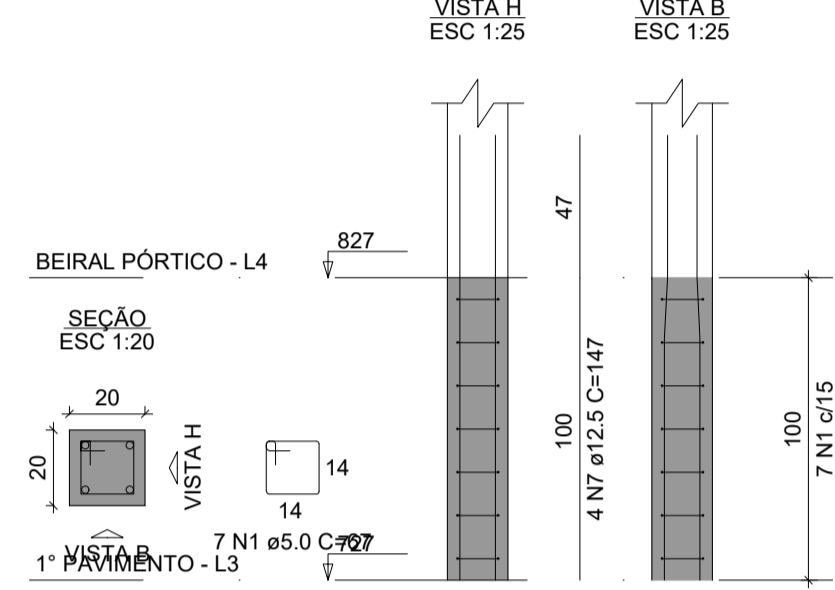
AÇO	N	DIAM (mm)	QUANT	C.UNIT (cm)	C.TOTAL (cm)
CA60	1	5.0	71	87	6177
	2	5.0	2	227	454
CA50	6	8.0	2	120	240
	7	8.0	2	870	1740

RESUMO DO AÇO

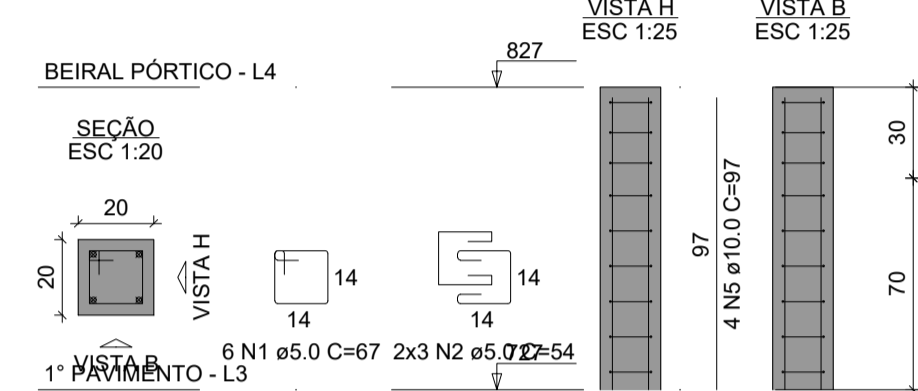
AÇO	DIAM (mm)	C.TOTAL (m)	PESO + 10% (kg)
CA50	8.0	171.3	74.3
CA60	5.0	358.7	60.8
PESO TOTAL (kg)			
CA50			74.3
CA60			60.8

Volume de concreto (C-25) = 1.09 m³
Área de forma = 12.58 m²

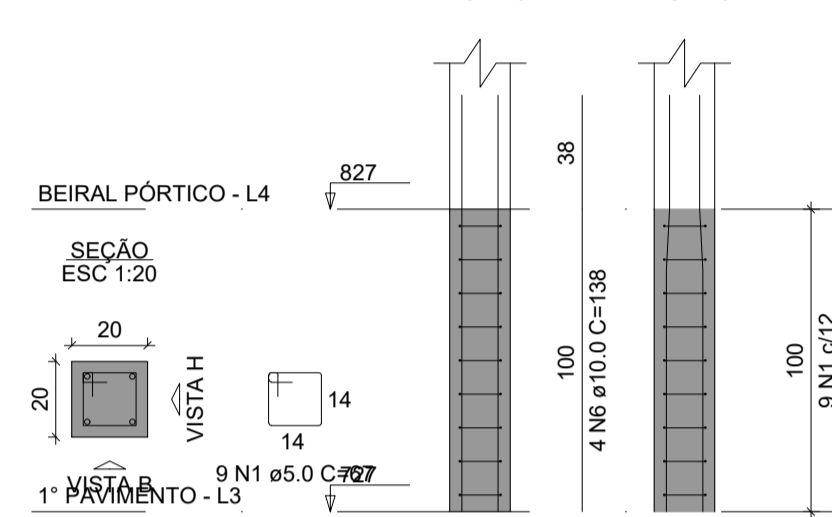
P23=P64=P66



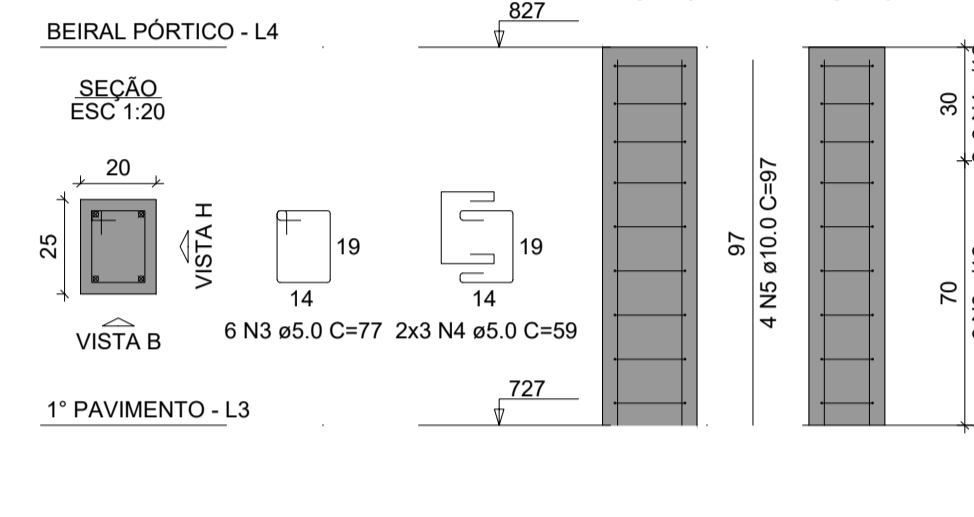
P36=P44=P52



P65



P67=P68



RELAÇÃO DO AÇO

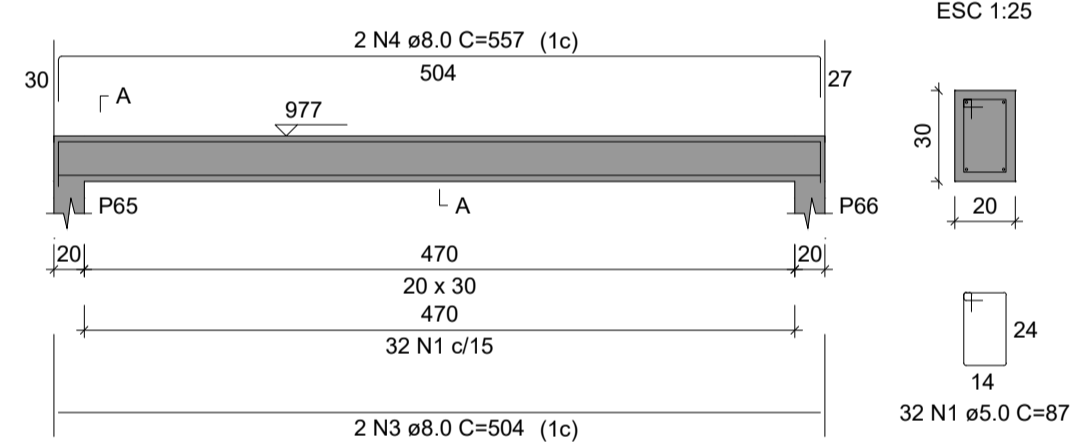
AÇO	N	DIAM (mm)	QUANT	C.UNIT (cm)	C.TOTAL (cm)
CA60	1	5.0	48	67	3216
	2	5.0	18	54	972
	3	5.0	12	77	924
CA50	4	5.0	12	59	708
	5	10.0	20	97	1940
	6	10.0	4	138	552
	7	12.5	12	147	1764

RESUMO DO AÇO

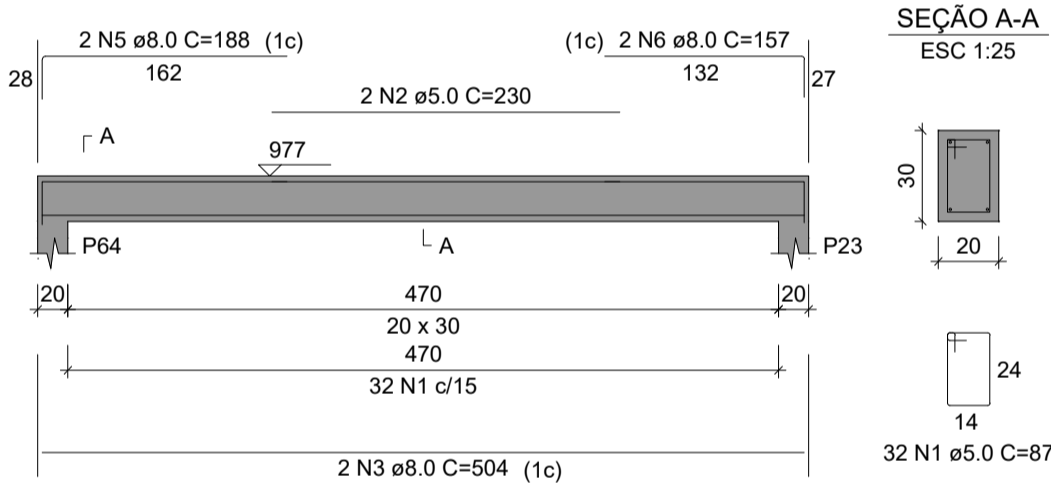
AÇO	DIAM (mm)	C.TOTAL (m)	PESO + 10% (kg)
CA50	10.0	24.9	16.9
CA60	5.0	17.6	18.7
PESO TOTAL (kg)			
CA50			35.6
CA60			9.9

Volume de concreto (C-25) = 0.38 m³
Área de forma = 7.40 m²

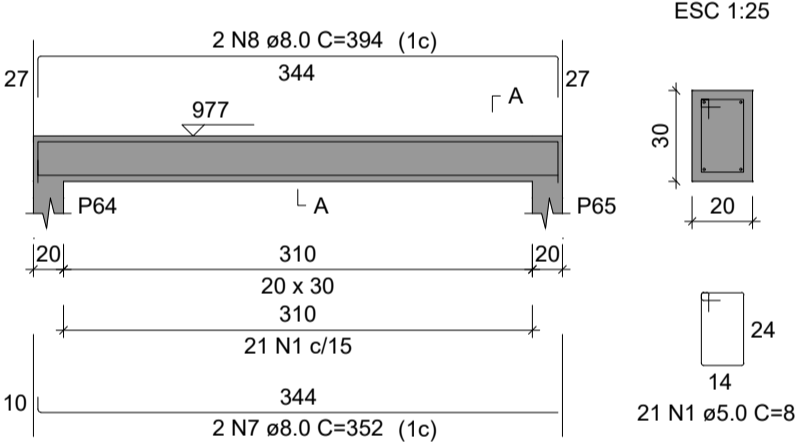
V301
ESC 1:50



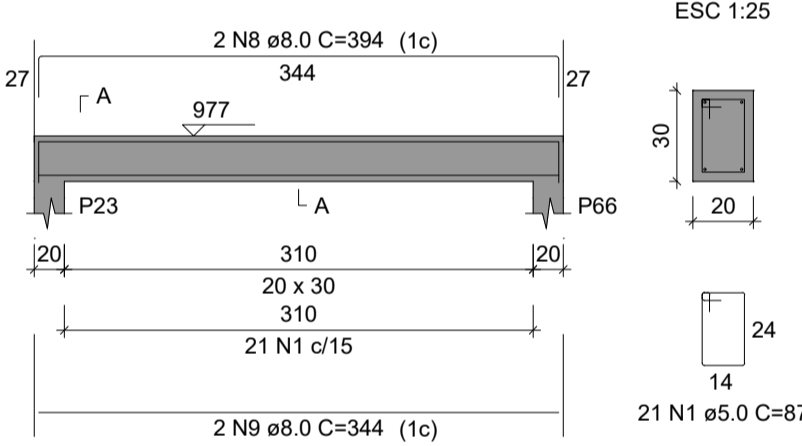
V302
ESC 1:50



V303
ESC 1:50



V304
ESC 1:50



RELAÇÃO DO AÇO

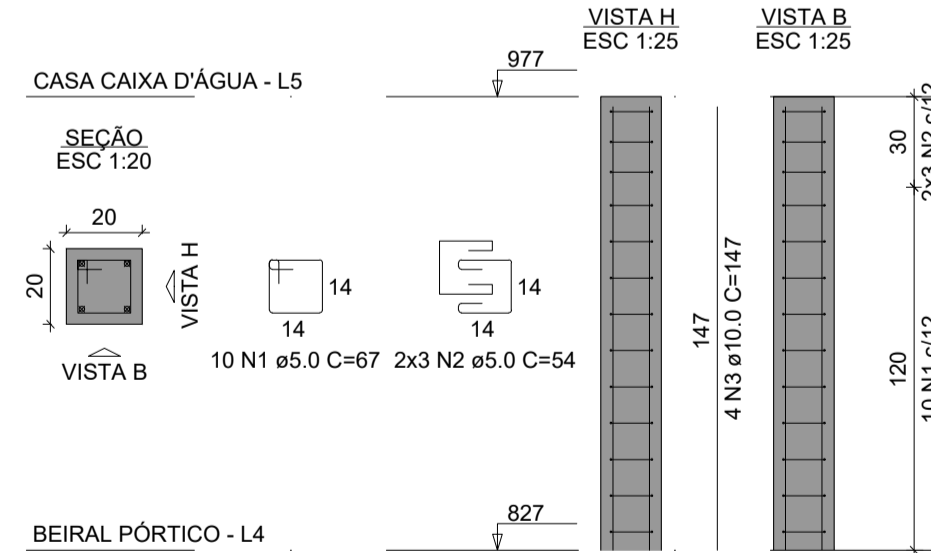
AÇO	N	DIAM (mm)	QUANT	C.UNIT (cm)	C.TOTAL (cm)
CA60	1	5.0	106	87	9222
	2	5.0	2	230	460
CA50	3	8.0	4	504	2016
	4	8.0	2	557	1114
	5	8.0	2	188	376
	6	8.0	2	157	314
	7	8.0	2	352	704
	8	8.0	4	394	1576
	9	8.0	2	344	688

RESUMO DO AÇO

AÇO	DIAM (mm)	C.TOTAL (m)	PESO + 10% (kg)
CA50	8.0	67.9	29.5
CA60	5.0	96.8	16.4
PESO TOTAL (kg)			
CA50			29.5
CA60			16.4

Volume de concreto (C-25) = 0.94 m³
Área de forma = 12.48 m²

P23=P64=P65=P66



RELAÇÃO DO AÇO

AÇO	N	DIAM (mm)	QUANT	C.UNIT (cm)	C.TOTAL (cm)
CA60	1	5.0	40	67	2680
	2	5.0	24	54	1296
CA50	3	10.0	16	147	2352

RESUMO DO AÇO

AÇO	DIAM (mm)	C.TOTAL (m)	PESO + 10% (kg)
CA50	10.0	23.5	16
CA60	5.0	39.8	6.7
PESO TOTAL (kg)			
CA50			16
CA60			6.7

Volume de concreto (C-25) = 0.24 m³
Área de forma = 4.80 m²



PREFEITURA MUNICIPAL DE FORMIGA
CNP.J.: 16.784.720/0001-25
Secretaria de Obras e Trânsito
(37) 3329-1846
secretariafgoabstransito@gmail.com
Rua: Barão de Plumhi, nº 121
Centro - Formiga | MG - Cep: 35570-000

Título: PROJETO ESTRUTURAL

Finalidade: SEDE SECRETARIAS DE OBRAS E TRÂNSITO E REGULAÇÃO URBANA

Detalhes: VIGAS E PILARES BEIRAL E CAIXA D'ÁGUA

Endereço Obra/Serviço: RUA CORONEL JOSÉ GONÇALVES D'AMARANTE, 83, CENTRO

Coordenadas:

EUGÊNIO VILELA JUNIOR
PREFEITO MUNICIPAL DE FORMIGA

LORENA DE PAIVA ARANTES
ENGENHEIRA CIVIL - CREA: 234.399/D

Escala: INDICADA
Desenho: LORENA A.
Data: SET./2022
Prancha: 26/28