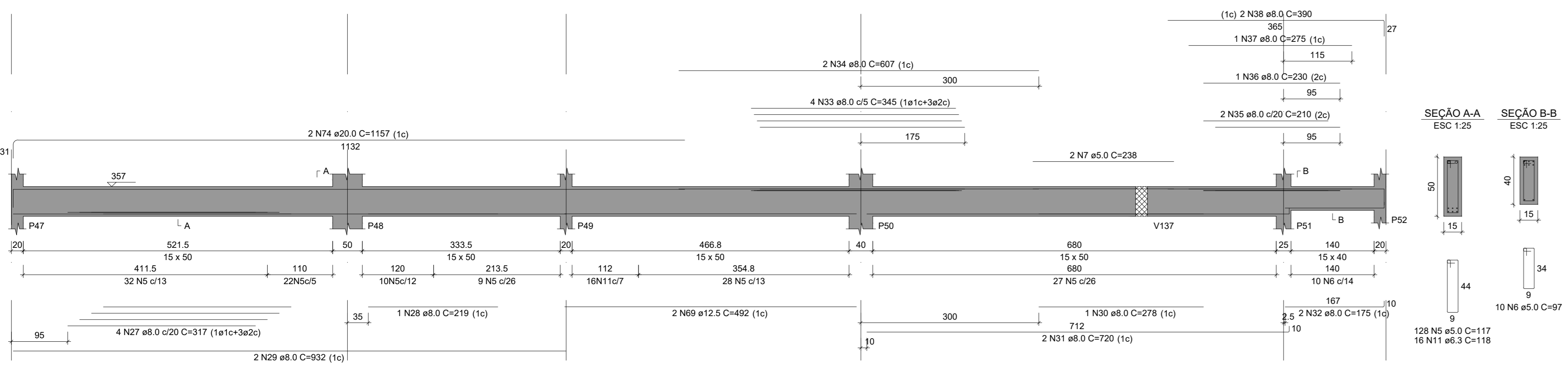
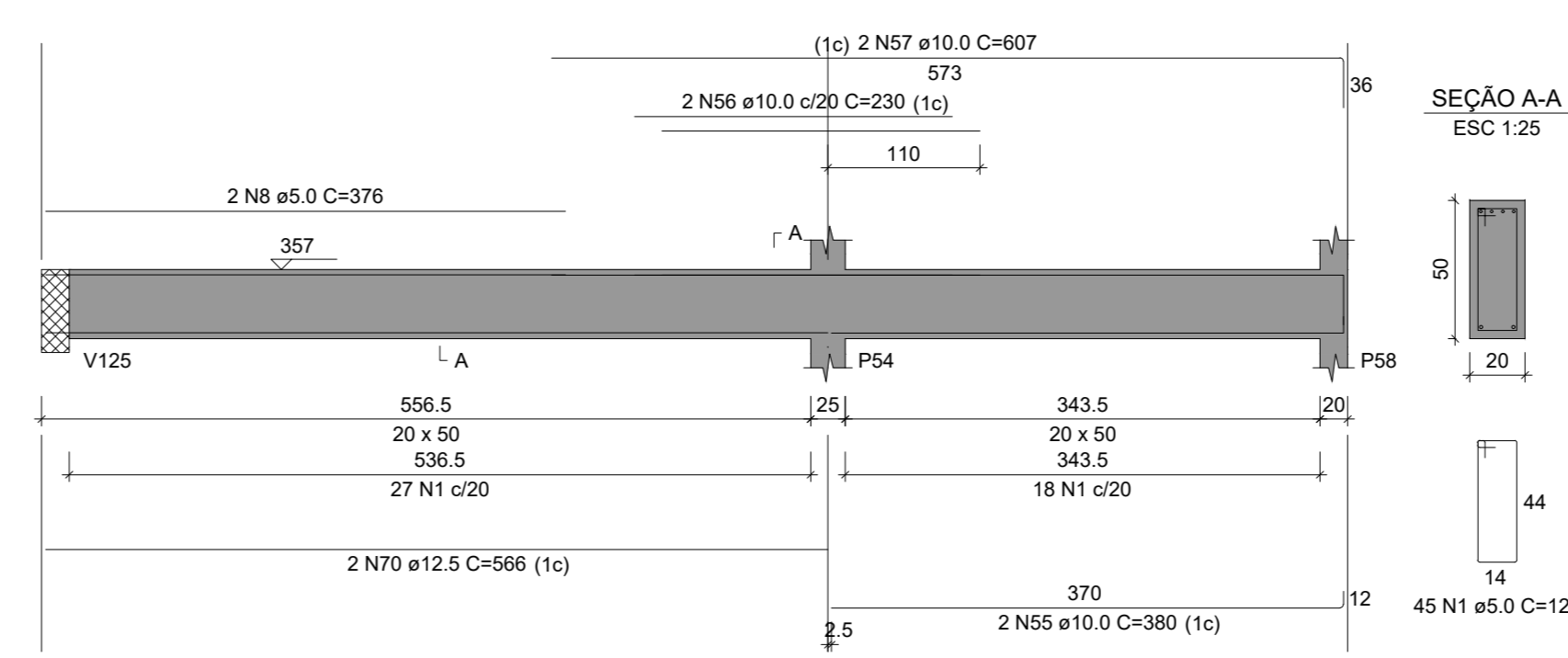


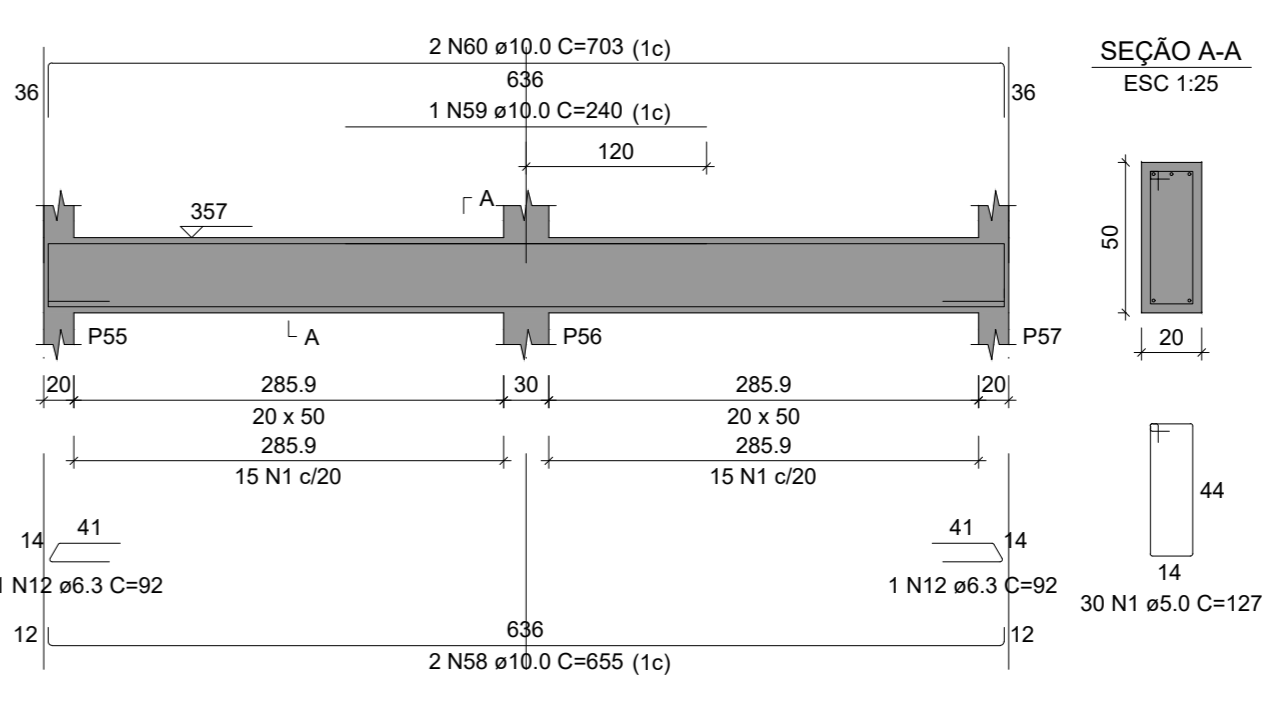
V117
ESC 1:50



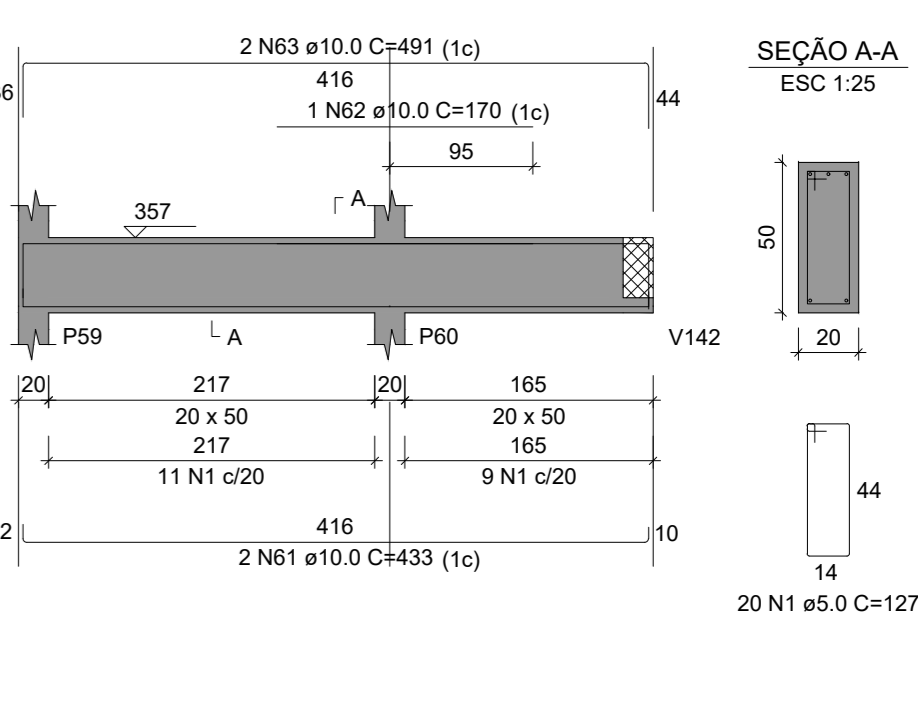
V118
ESC 1:50



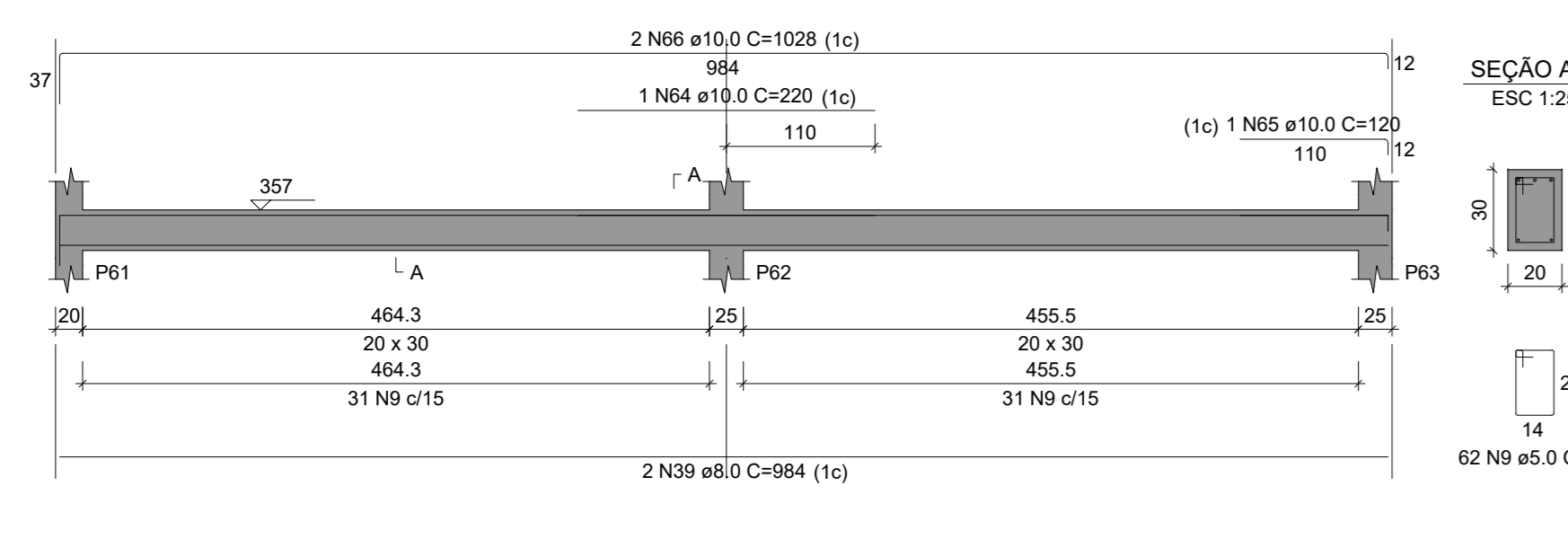
V119
ESC 1:50



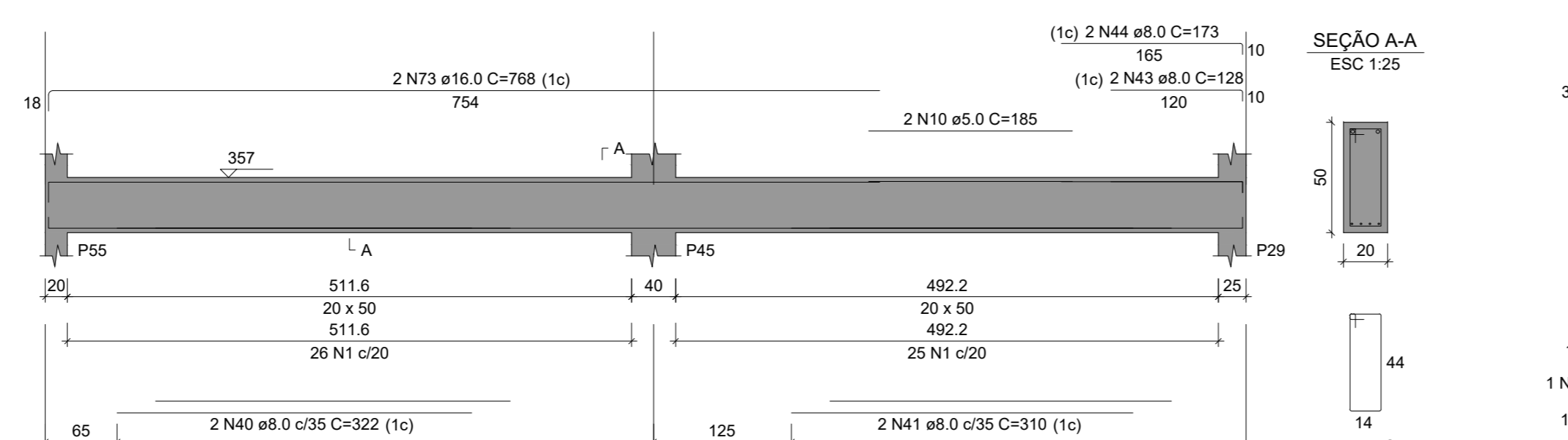
V120
ESC 1:50



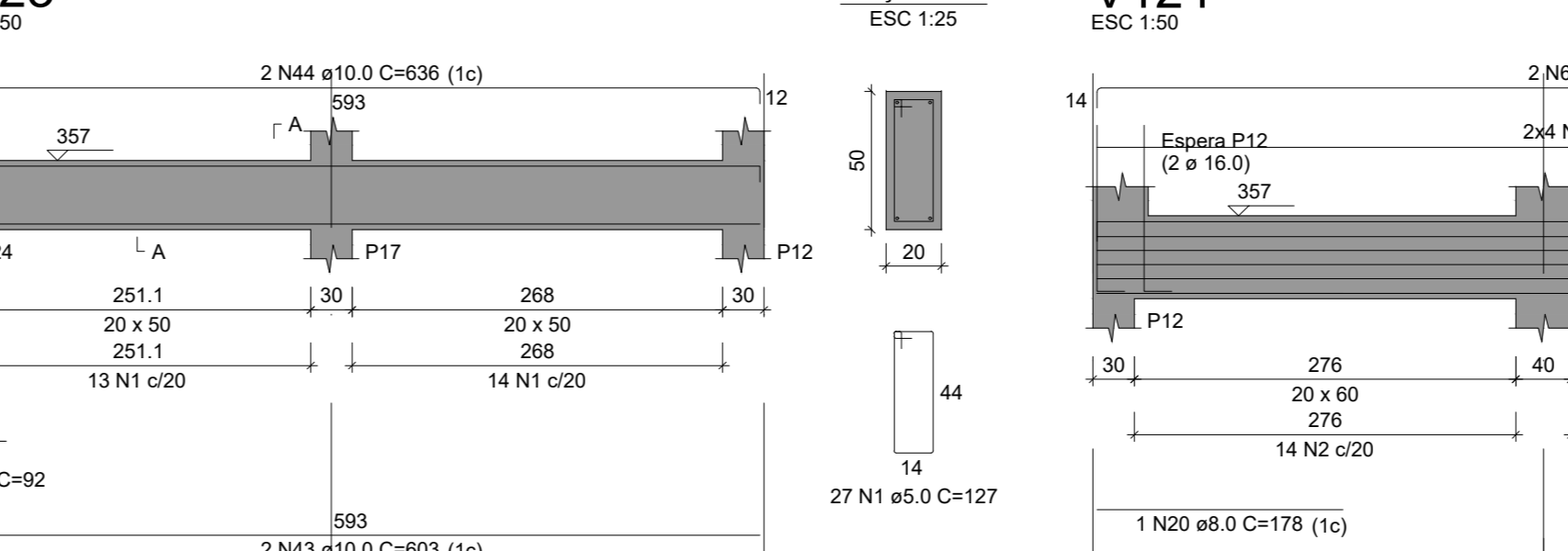
V121
ESC 1:50



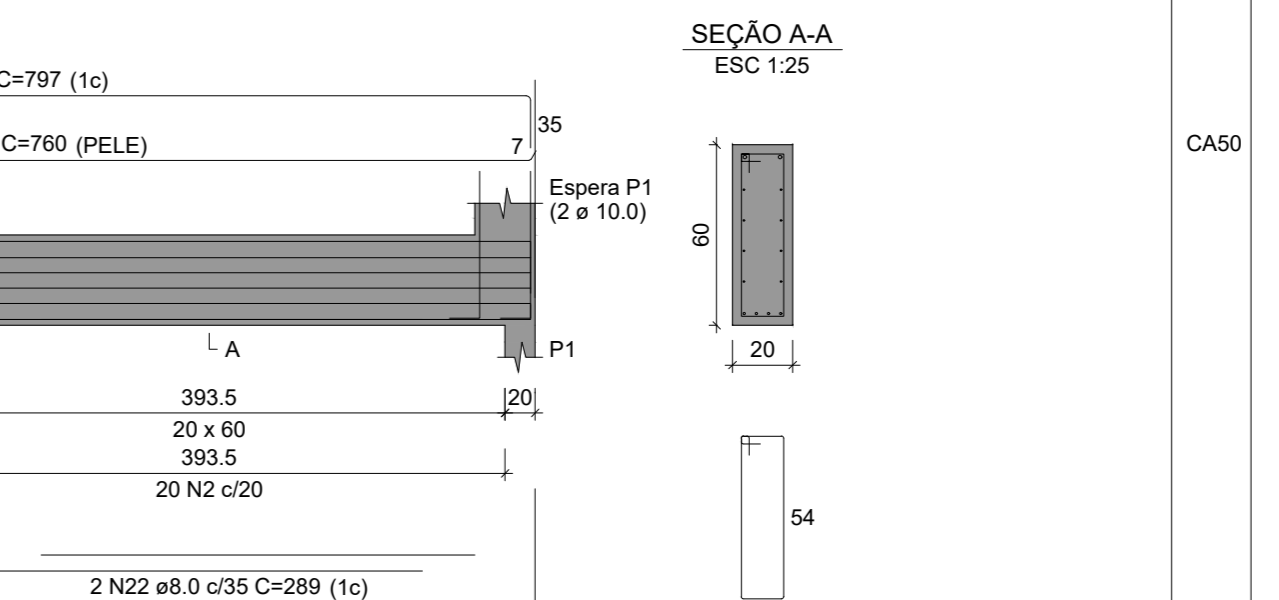
V122
ESC 1:50



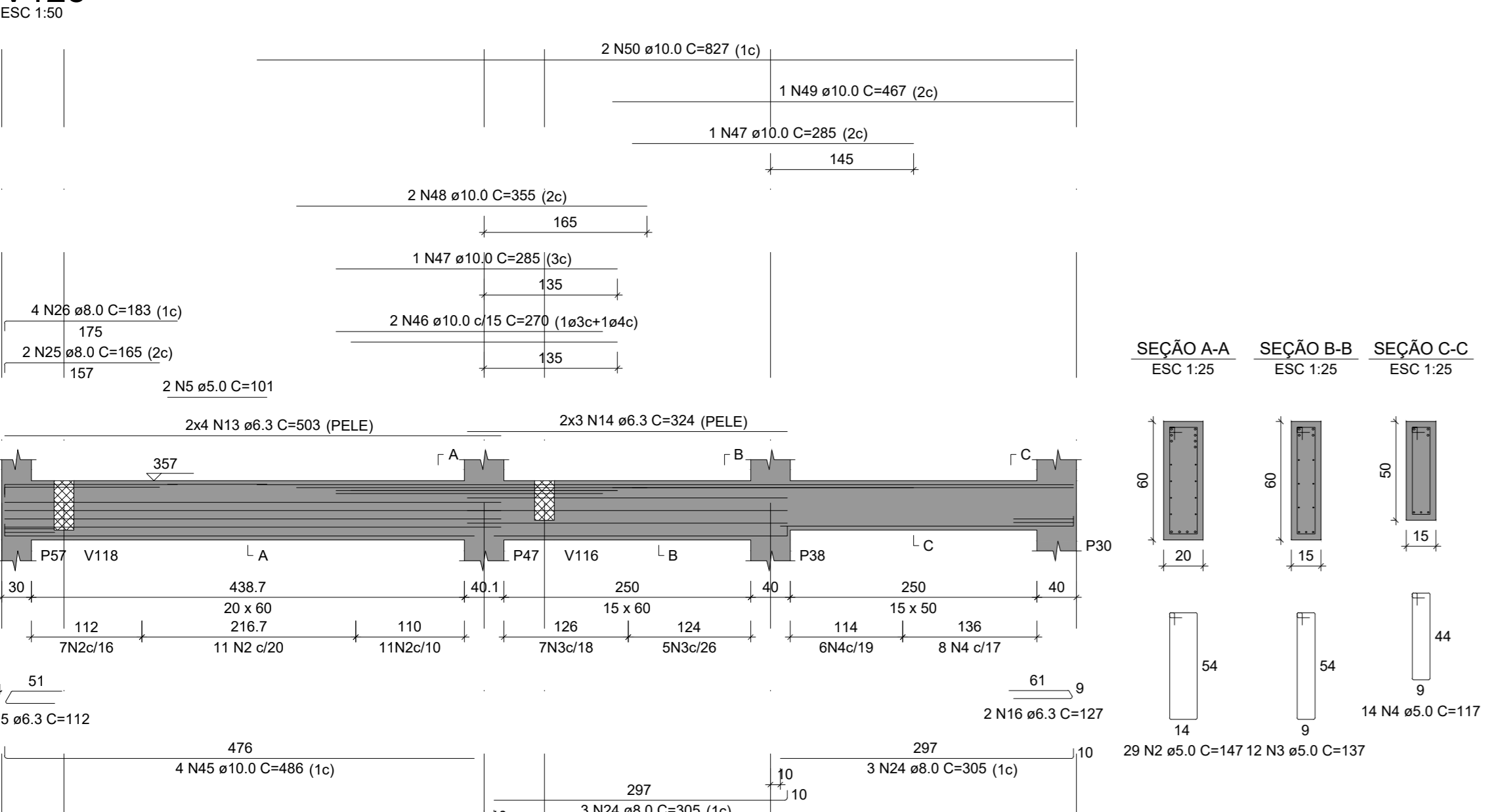
V123
ESC 1:50



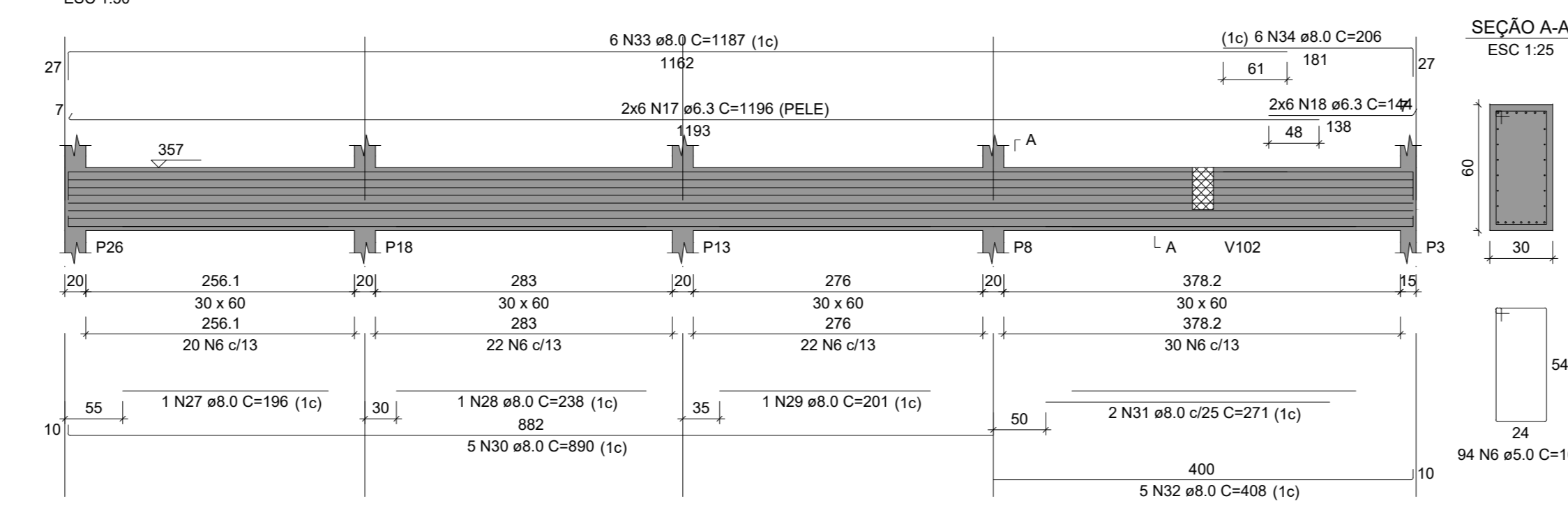
V124
ESC 1:50



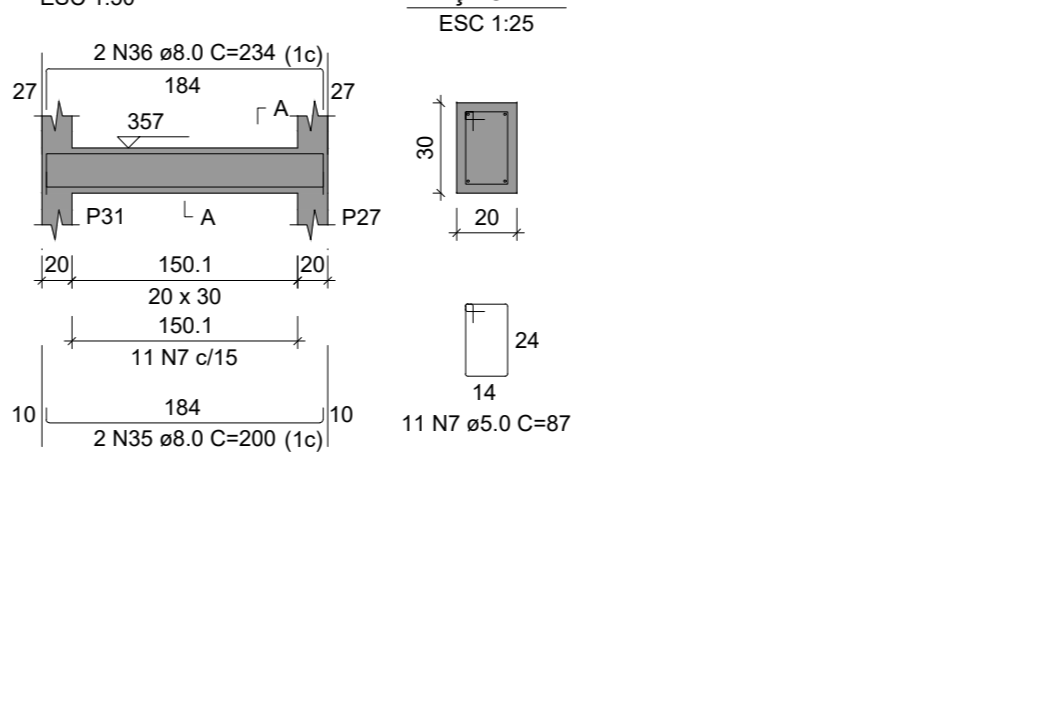
V125
ESC 1:50



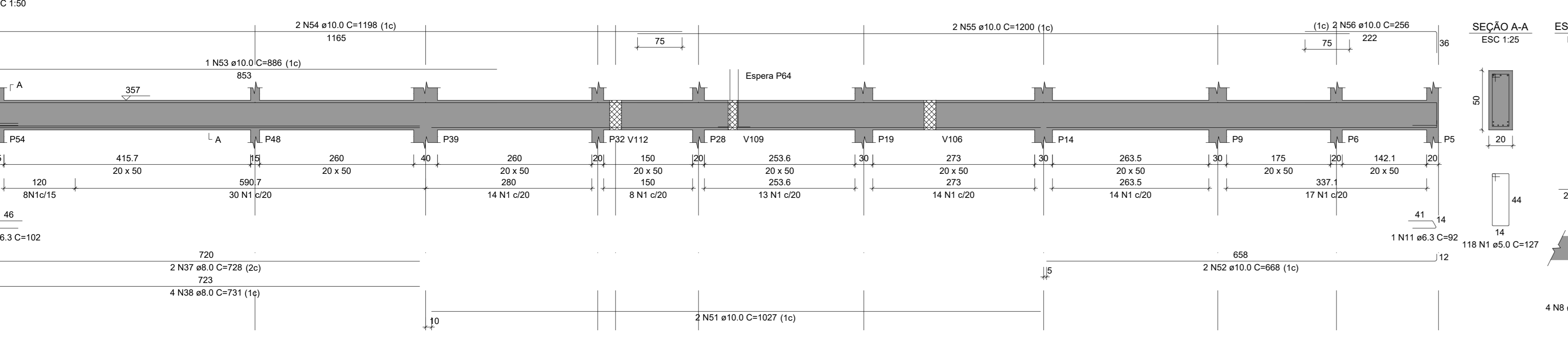
V126
ESC 1:50



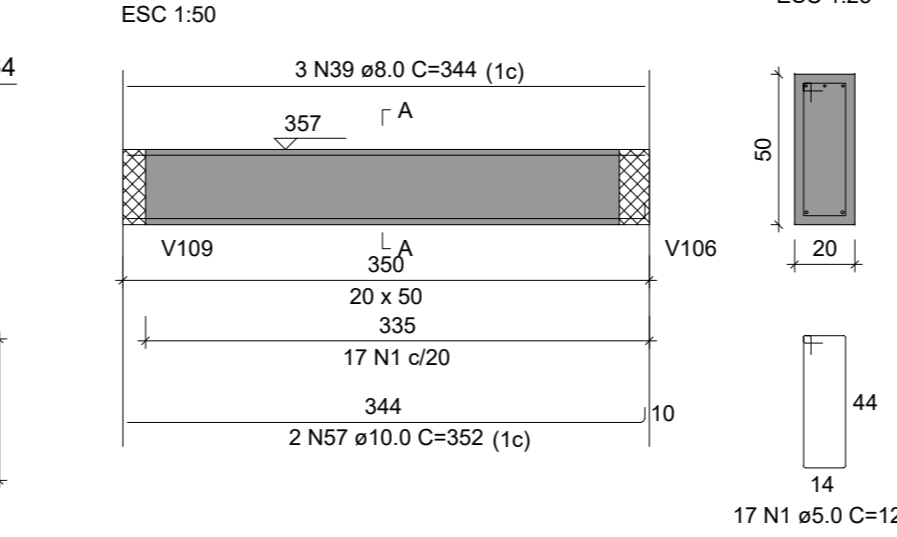
V127
ESC 1:50



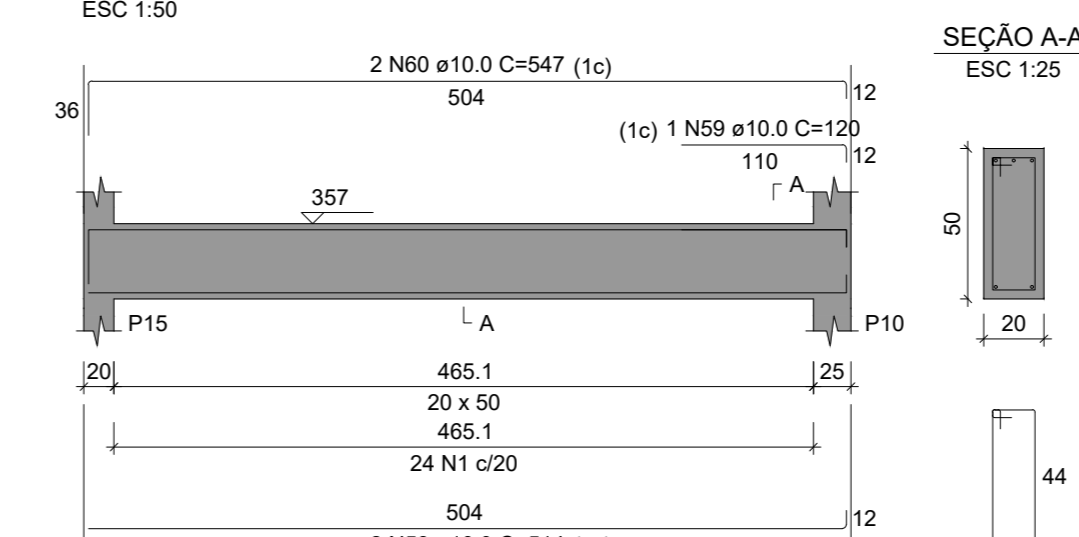
V128
ESC 1:50



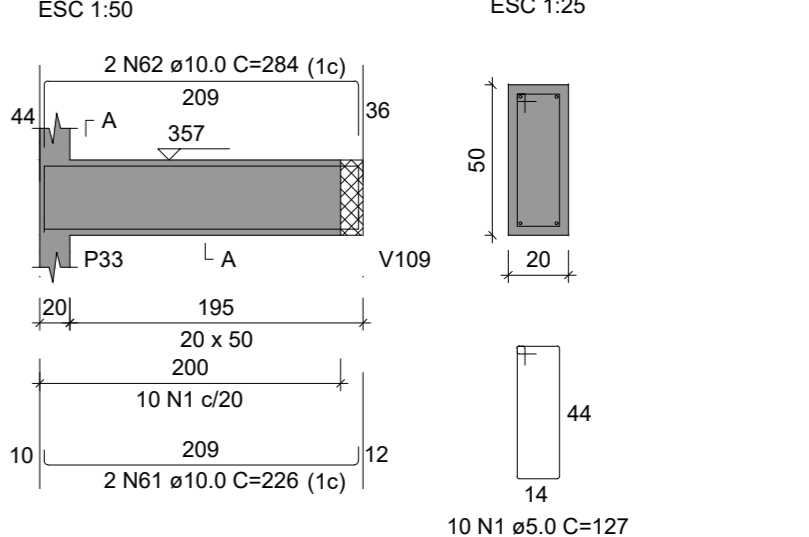
V129
ESC 1:50



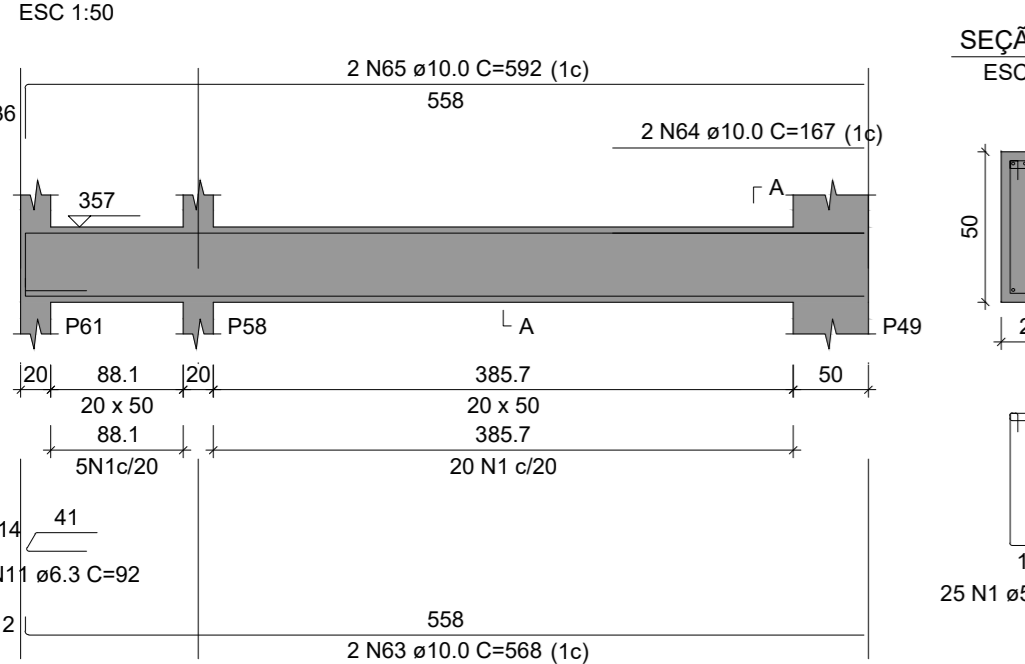
V130
ESC 1:50



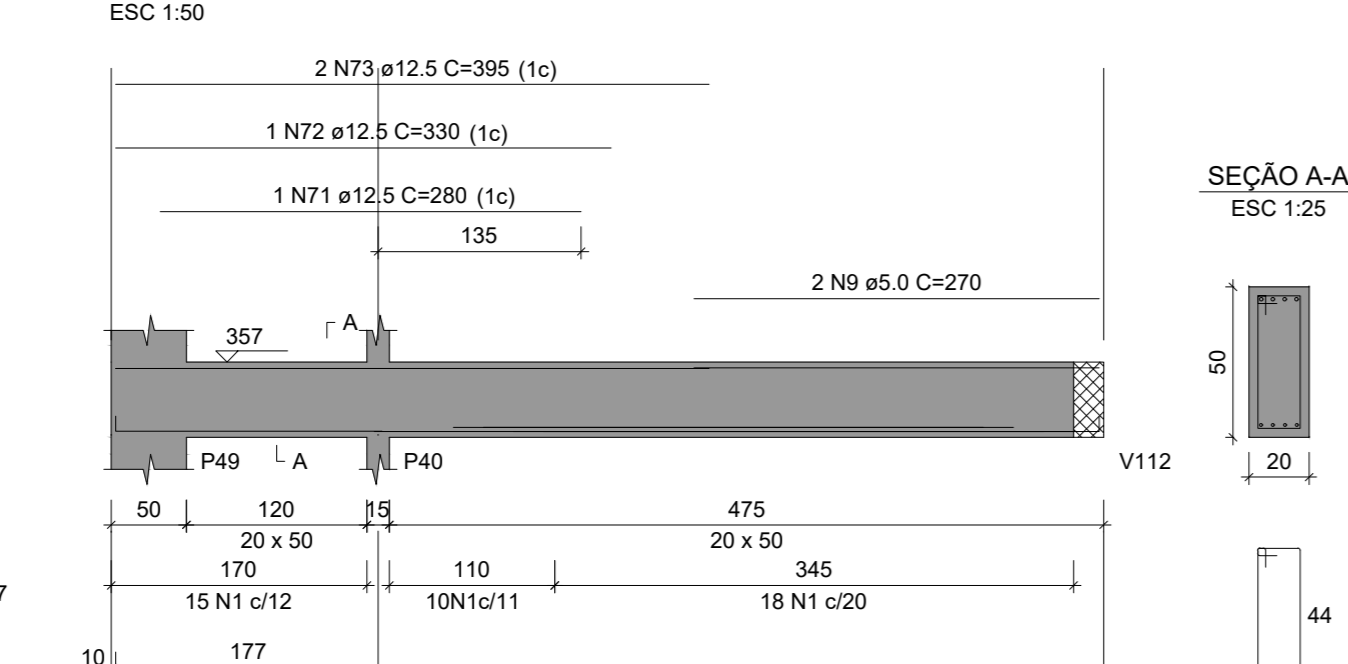
V131
ESC 1:50



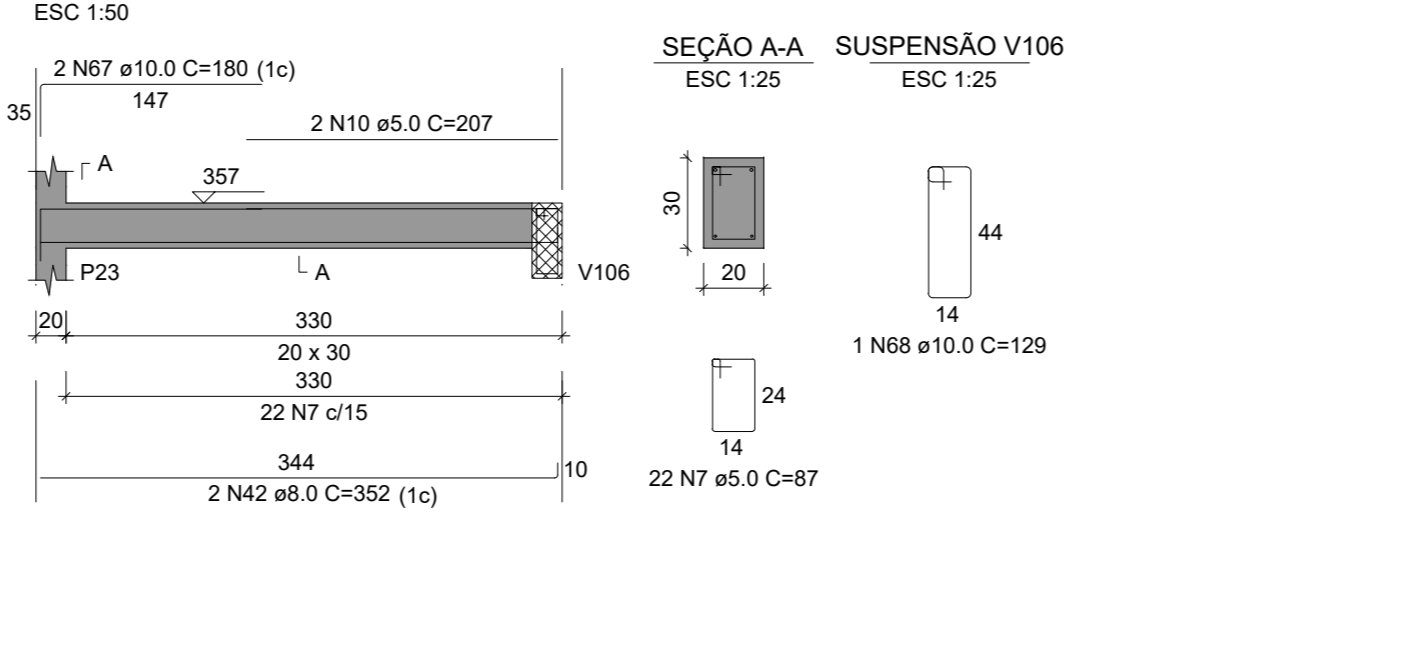
V132
ESC 1:50



V133
ESC 1:50



V134
ESC 1:50



RELAÇÃO DO AÇO

CAÇO	N	DIAM (mm)	QUANT	C TOTAL (cm)
CA60	1	5.0	264	127
CA60	2	5.0	63	147
CA60	3	5.0	12	137
CA60	4	5.0	14	117
CA60	5	5.0	2	101
CA60	6	5.0	94	1669
CA60	7	5.0	33	87
CA60	8	5.0	6	296
CA60	9	5.0	2	870
CA60	10	5.0	2	540
CA60	11	5.0	3	270
CA60	12	6.3	7	276
CA60	13	6.3	8	503
CA60	14	6.3	12	304
CA60	15	6.3	2	112
CA60	16	6.3	2	127
CA60	17	6.3	12	1196
CA60	18	6.3	12	1442
CA60	19	6.3	2	102
CA60	20	8.0	2	178
CA60	21	8.0	1	313
CA60	22	8.0	2	762
CA60	23	8.0	2	165
CA60	24	8.0	4	163
CA60	25	8.0	1	196
CA60	26	8.0	2	408
CA60	27	8.0	1	201
CA60	28	8.0	2	271
CA60	29	8.0	6	206
CA60	30	8.0	6	1187
CA60	31	8.0	6	206
CA60	32	8.0	2	200
CA60	33	8.0	2	254
CA60	34	8.0	2	254
CA60	35	8.0	2	254
CA60	36	8.0	2	254
CA60	37	8.0	2	728
CA60	38	8.0	4	731
CA60	39	8.0	3	344
CA60	40	8.0	4	303
CA60	41	8.0	2	490
CA60	42	8.0	2	636
CA60	43	10.0	2	603
CA60	44	10.0	2	636
CA60	45	10.0	4	486
CA60	46	10.0	2	270
CA60	47	10.0	2	285
CA60	48	10.0	2	355
CA60	49	10.0	1	467
CA60	50	10.0	2	627
CA60	51	10.0	2	1027
CA60	52	10.0	2	1868
CA60	53	10.0	1	886
CA60	54	10.0	2	1166
CA60	55	10.0	2	1200
CA60	56	10.0	2	256
CA60	57	10.0	2	352
CA60	58	10.0	2	614
CA60	59	10.0	1	120
CA60	60	10.0	2	547
CA60	61	10.0	2	226
CA60	62	10.0	2	284
CA60	63	10.0	2	568
CA60	64	10.0	2	167
CA60	65	10.0	2	592
CA60	66	10.0	4	165
CA60	67	10.0	2	180
CA60	68	12.5	1	129
CA60	69	12.5	2	797
CA60	70	12.5	4	114
CA60	71	12.5	1	280
CA60	72	12.5	1	330
CA60	73	12.5	2	395
CA60	74	20.0	2	395

RESUMO DO AÇO

CAÇO	DIAM (mm)	C TOTAL (cm)	PESO + 10% (kg)
CA60	5.0	200.9	75.3
CA60	6.3	308.8	104.1
CA60	8.0	208	174.9
CA60	10.0	34.5	36.1
CA60	5.0	600.4	112
PESO TOTAL (kg)			
CA60			423.9
CA60			112

Volume de concreto (C-25) = 9.00 m³
Área de forma = 80.90 m²

PREFEITURA MUNICIPAL DE FORMIGA
C.N.P.J. 16.784.700/0001-25
Secretaria de Obras e Trânsito
Rua Barão de Parnaíba, nº 121
Centro - Formiga | MG - Cep. 35570-000

Título: PROJETO ESTRUTURAL

Finalidade: SEDE SECRETARIAS DE OBRAS E TRÂNSITO E REGULAÇÃO URBANA

Detalhes: VIGAS TÉRREO 02

Endereço Obra/Serviço: RUA CORONEL JOSÉ GONÇALVES D'AMARANTE, 83, CENTRO

Coordenadas:

Escala: INDICADA | **Desenho:** LORENA A. | **Data:** SET./2022 | **Prancha:** 14/28