

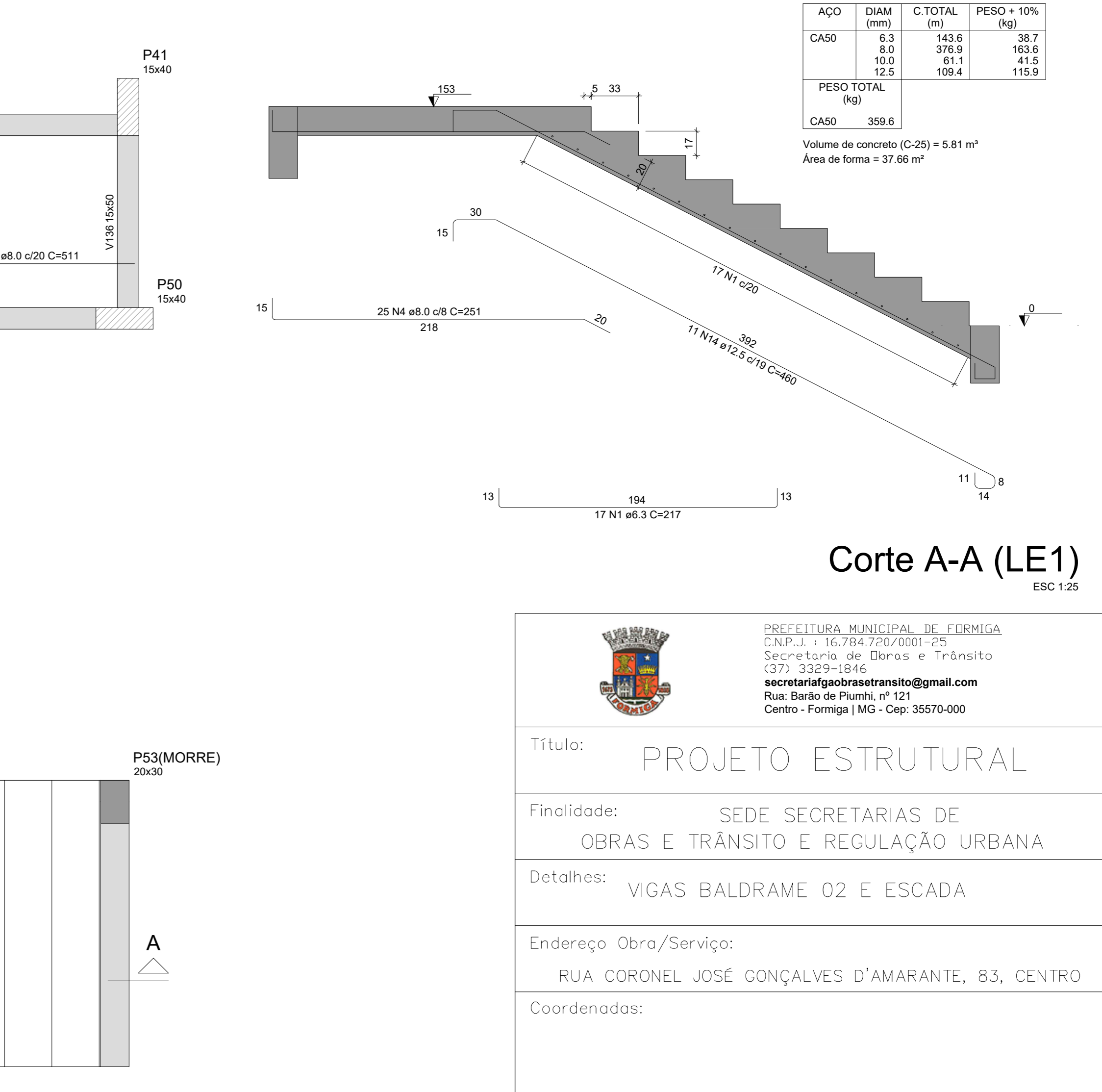
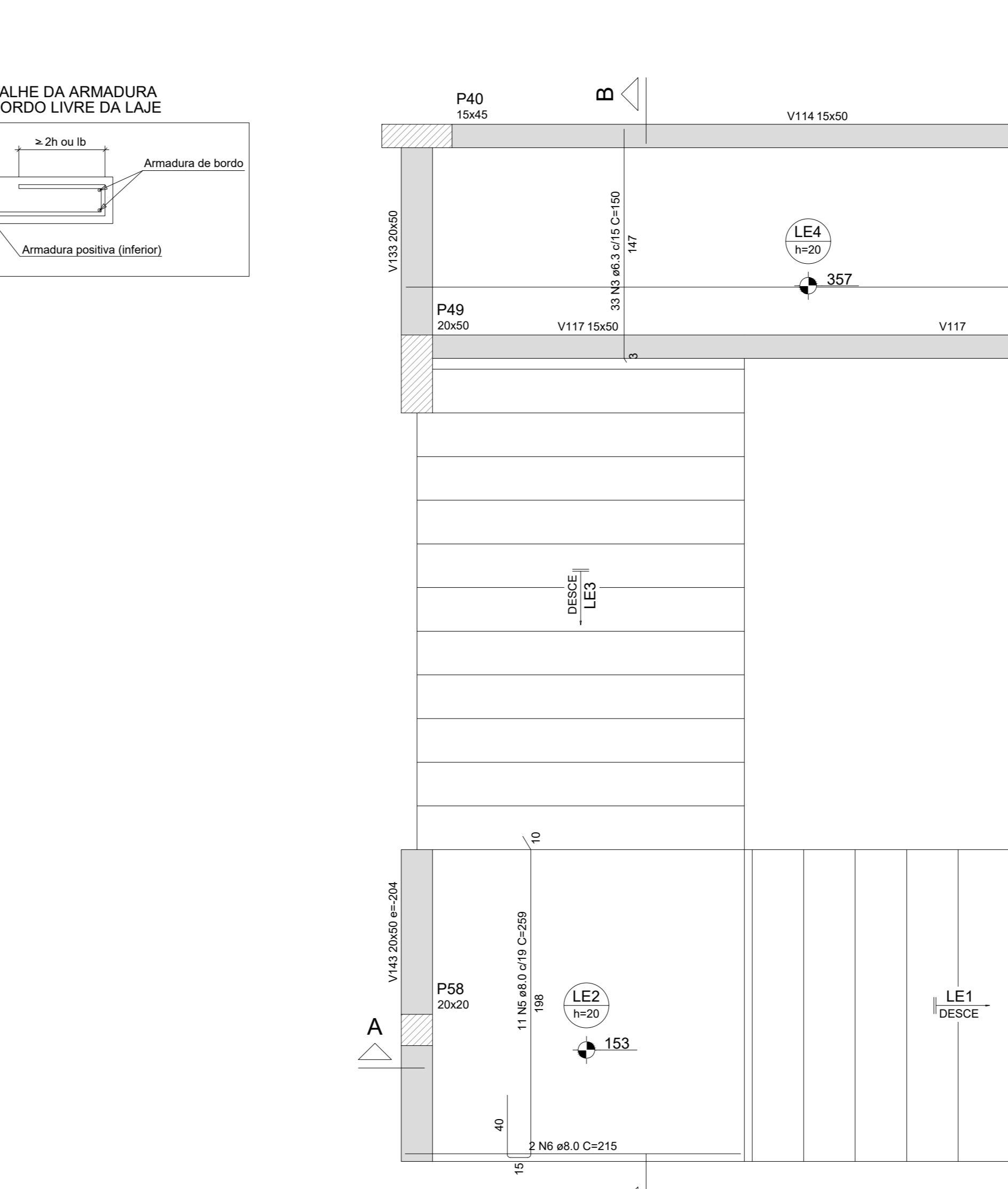
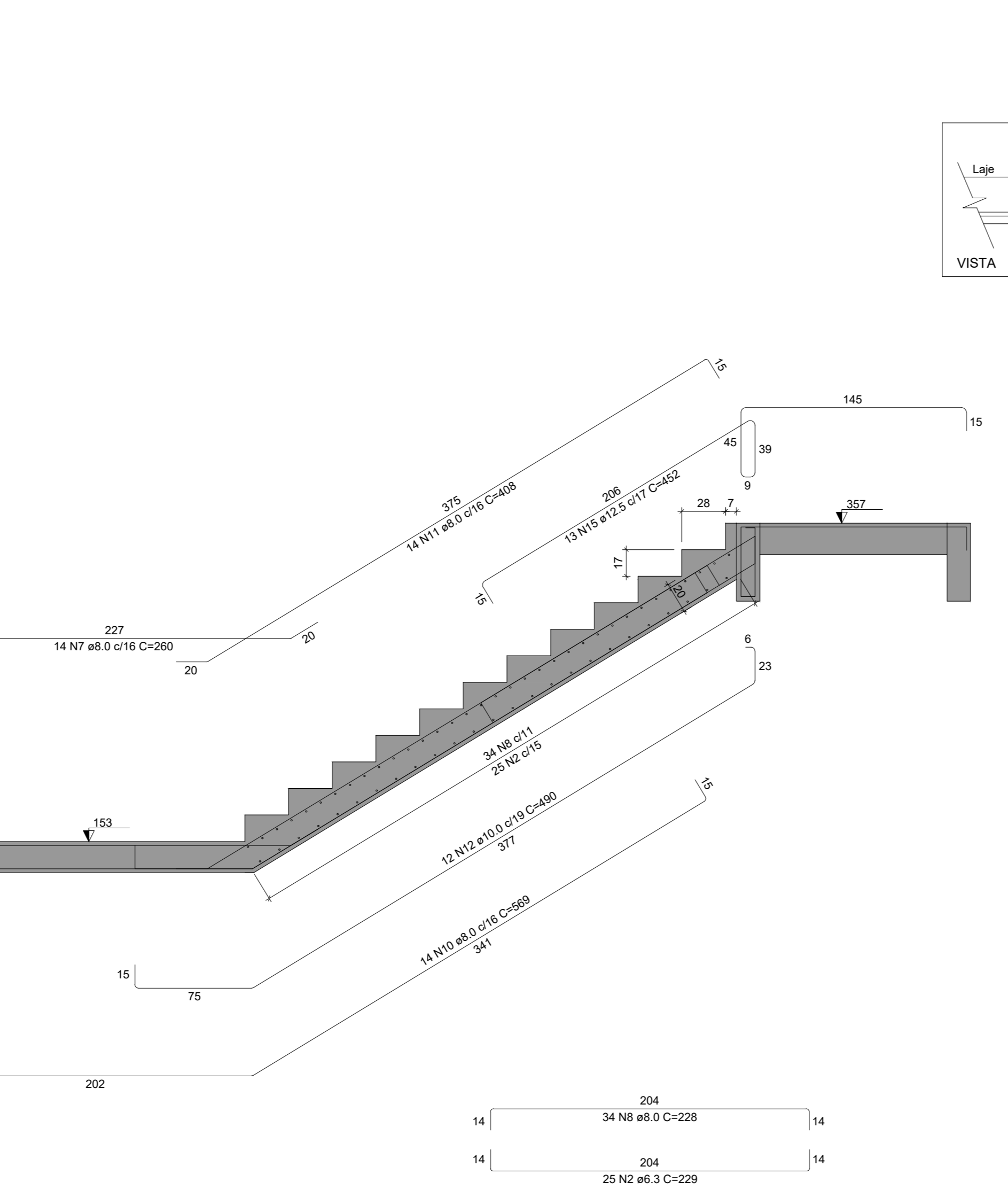
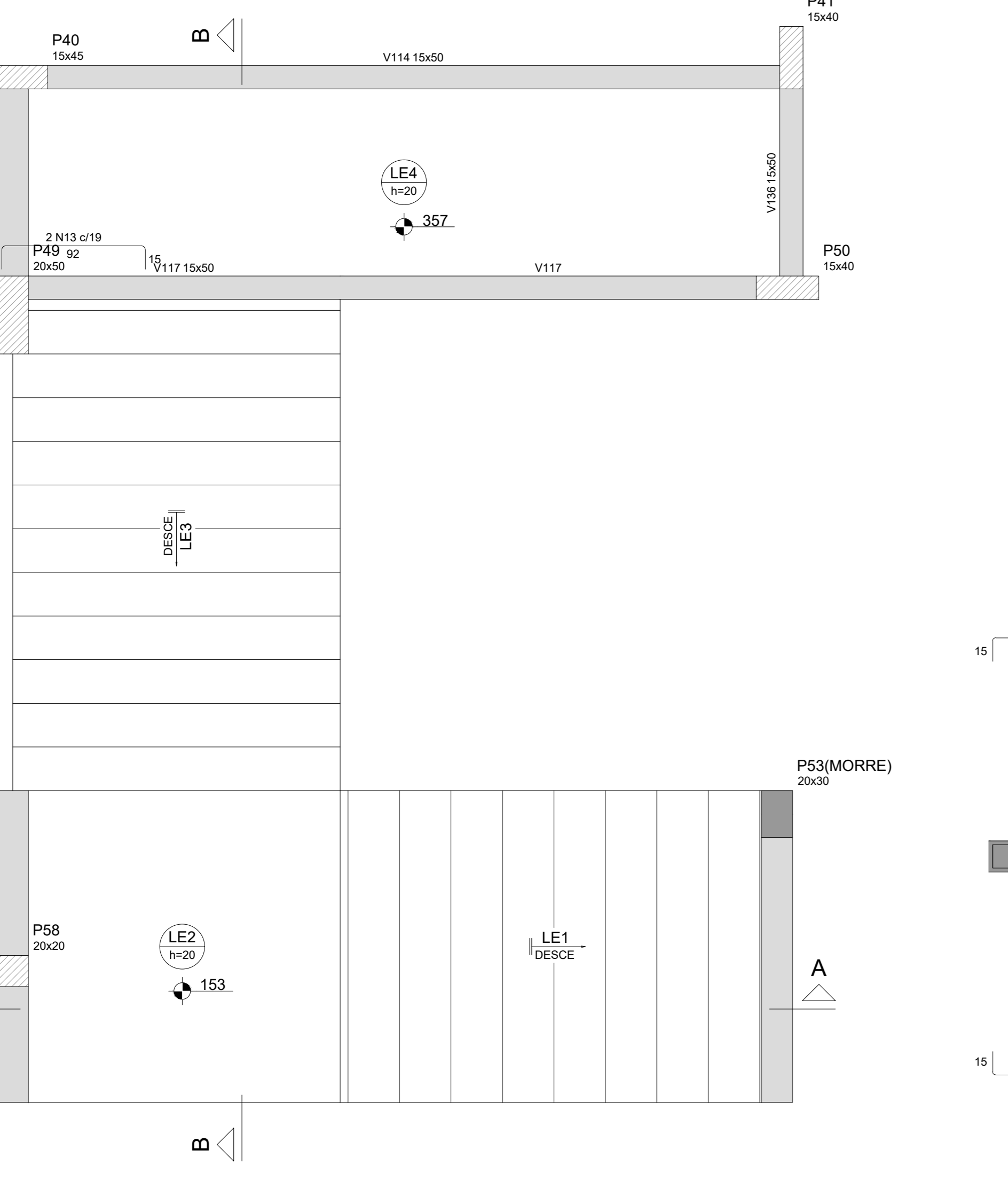
RELAÇÃO DO AÇO					RELAÇÃO DO AÇO				
ACAO	N	DIAM (mm)	QUANT	C.TOTAL (cm)	ACAO	N	DIAM (mm)	QUANT	C.TOTAL (cm)
VFUND19	1	5.0	116	117	VFUND36	1	5.0	29	29
VFUND20	2	5.0	29	127	VFUND37	2	5.0	289	107
VFUND21	3	5.0	107	3437	VFUND38	3	5.0	40	127
VFUND22	4	5.0	321	107	VFUND39	4	5.0	50	87
VFUND23	5	5.0	190	1520	VFUND40	5	5.0	154	13308
VFUND24	6	5.0	190	1520	VFUND41	6	5.0	107	760
VFUND25	7	5.0	154	13308	VFUND42	7	5.0	80	217
VFUND26	8	5.0	4	190	VFUND43	8	5.0	3	82
VFUND27	9	5.0	4	190	VFUND44	9	5.0	1	190
VFUND28	10	6.3	1	107	VFUND45	10	6.3	3	520
VFUND29	11	8.0	1	302	VFUND46	11	8.0	1	282
VFUND30	12	8.0	1	342	VFUND47	12	8.0	3	104
VFUND31	13	8.0	1	258	VFUND48	13	8.0	3	113
VFUND32	14	8.0	2	962	VFUND49	14	8.0	3	411
VFUND33	15	8.0	2	107	VFUND50	15	8.0	2	252
VFUND34	16	8.0	2	537	VFUND51	16	8.0	2	222
	17	8.0	2	373	VFUND52	17	8.0	2	254
	18	8.0	2	800	VFUND53	18	8.0	2	254
	19	8.0	2	107		19	8.0	1	153
	20	8.0	2	187		20	8.0	1	291
	21	8.0	2	330		21	8.0	1	566
	22	8.0	2	350		22	8.0	1	218
	23	8.0	6	267		23	8.0	2	350
	24	8.0	6	272		24	8.0	2	350
	25	8.0	6	267		25	8.0	1	297
	26	8.0	6	272		26	8.0	2	350
	27	8.0	1	265		27	8.0	1	267
	28	8.0	1	270		28	8.0	1	267
	29	8.0	1	140		29	8.0	3	352
	30	8.0	1	140		30	8.0	3	145
	31	8.0	1	113		31	8.0	1	355
	32	8.0	1	113		32	8.0	2	355
	33	8.0	1	312		33	8.0	3	374
	34	8.0	1	302		34	8.0	3	374
	35	8.0	2	1083		35	8.0	1	102
	36	8.0	2	930		36	8.0	1	102
	37	8.0	2	377		37	8.0	2	627
	38	8.0	2	307		38	8.0	1	240
	39	8.0	2	930		39	8.0	1	240
	40	8.0	1	464		40	8.0	1	134
	41	8.0	2	463		41	8.0	2	368
	42	8.0	1	194		42	8.0	2	368
	43	8.0	3	1198		43	8.0	1	126
	44	8.0	1	223		44	8.0	1	126
	45	8.0	4	450		45	8.0	2	456
	46	8.0	4	450		46	8.0	2	456
	47	8.0	1	105		47	8.0	2	474
	48	8.0	1	251		48	8.0	3	189
	49	8.0	2	298		49	8.0	1	225
	50	8.0	2	330		50	8.0	3	189
	51	8.0	2	431		51	8.0	1	225
	52	8.0	2	1091		52	8.0	1	225
	53	8.0	2	905		53	8.0	1	225
	54	8.0	1	150		54	8.0	9	440
	55	8.0	2	200		55	8.0	2	181
	56	8.0	2	238		56	8.0	1	109
	57	8.0	2	238		57	8.0	2	844
	58	8.0	3	395		58	8.0	1	122
	59	8.0	1	156		59	8.0	1	122
	60	8.0	1	296		60	8.0	1	122
	61	8.0	1	443		61	8.0	2	514
	62	8.0	2	1038		62	8.0	2	514
	63	8.0	2	255		63	8.0	2	514
	64	8.0	2	430		64	8.0	1	133
	65	8.0	2	275		65	8.0	2	534
	66	10.0	2	444		66	10.0	2	534
	67	10.0	2	888		67	12.5	1	330
	68	10.0	1	129					
	69	10.0	2	191					
	70	10.0	2	415					
	71	12.5	2	230					
	72	12.5	2	230					
	73	12.5	2	1066					
	74	12.5	2	1066					
	75	12.5	2	750					
	76	12.5	2	750					
	77	12.5	2	488					
	78	12.5	2	254					
	79	12.5	1	169					
	80	12.5	2	460					

RESUMO DO AÇO				
ACAO	DIAM (mm)	C.TOTAL (cm)	PESO + 10% (kg)	PESO - 10% (kg)
CASO	6.3	117.8	105	93
	8.0	407.8	293	261
	10.0	80.6	54.6	48.1
	12.5	99.2	105.1	92.2
	5.0	695	117.8	105
PESO TOTAL (kg)			561.1	498.1
CASO	363.1			
CASO	117.8			

Volume de concreto (C-25) = 8.90 m³
Área de forma = 116.02 m²

RESUMO DO AÇO				
ACAO	DIAM (mm)	C.TOTAL (cm)	PESO + 10% (kg)	PESO - 10% (kg)
CASO	6.3	143.6	38	33
	8.0	276.8	163.6	143.6
	12.5	61	65.9	58.1
	5.0	443.4	75.2	66.1
PESO TOTAL (kg)			347.6	300.7
CASO	359.6			

Volume de concreto (C-25) = 5.81 m³
Área de forma = 37.66 m²



Armação negativa da escada E2 ESC 1:25

Corte B-B (LE3) ESC 1:25

Armação positiva da escada E2 ESC 1:25

Corte A-A (LE1) ESC 1:25

PREFEITURA MUNICIPAL DE FORMIGA
CNPJ: 16.784.720/0001-55
Secretaria de Obras e Trânsito
Rua: Santa de Fátima, nº 121
Centro - Formiga | MG - Cep: 35570-000

PROJETO ESTRUTURAL

Finalidade: SEDE SECRETARIAS DE OBRAS E TRÂNSITO E REGULAÇÃO URBANA

Detalhes: VIGAS BALDRAME 02 E ESCADA

Endereço Obra/Serviço: RUA CORONEL JOSÉ GONÇALVES D'AMARANTE, 83, CENTRO

Coordenadas: LORENA DE PAIVA ARANTES, ENGENHEIRA CIVIL - CREA: 234.399/D

EUGÊNIO VIEIRA JUNIOR
PREFEITO MUNICIPAL DE FORMIGA

Escala: INDICADA | Desenho: LORENA A. | Data: SET, 2022 | Prancha: 11/28