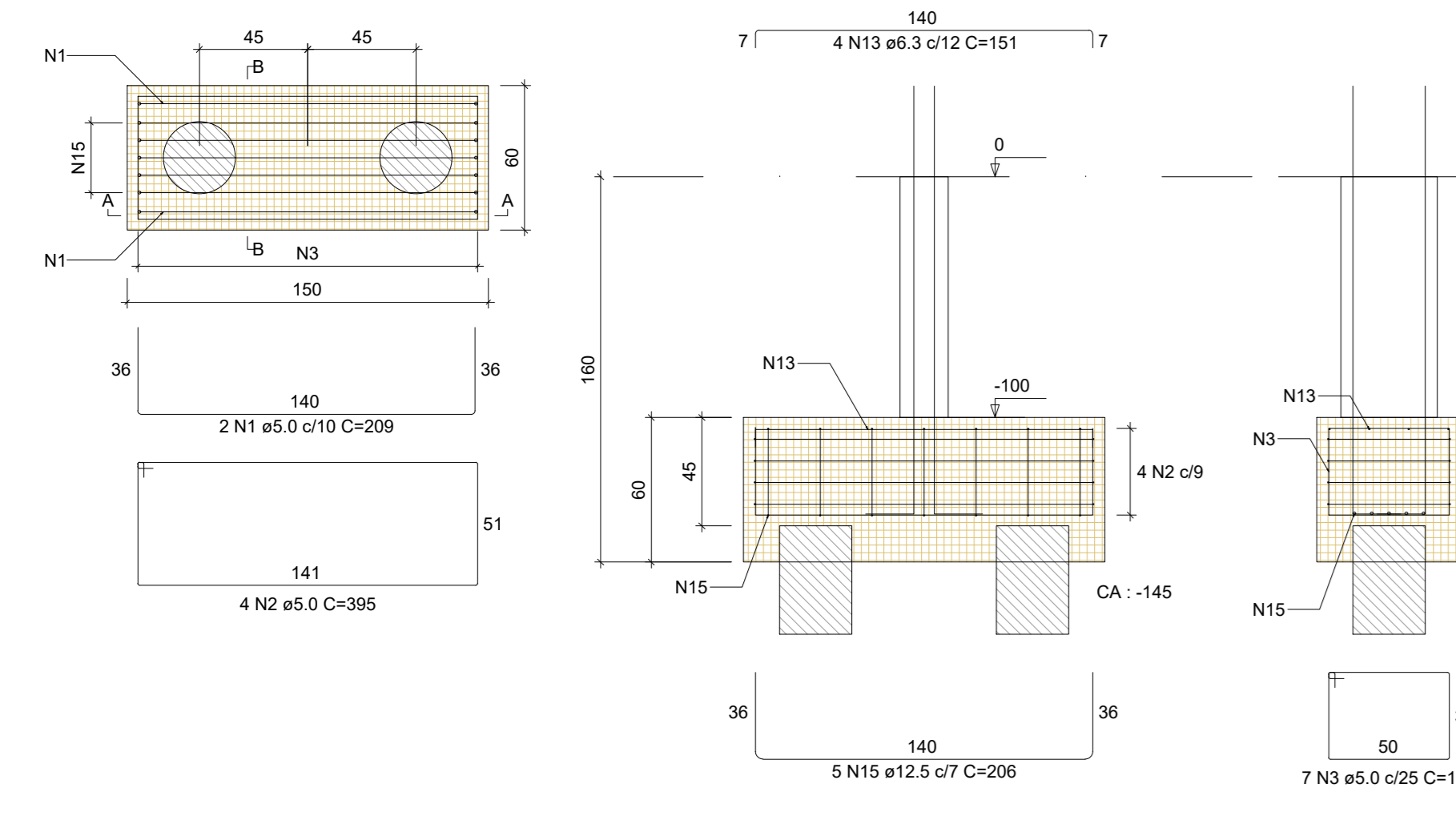
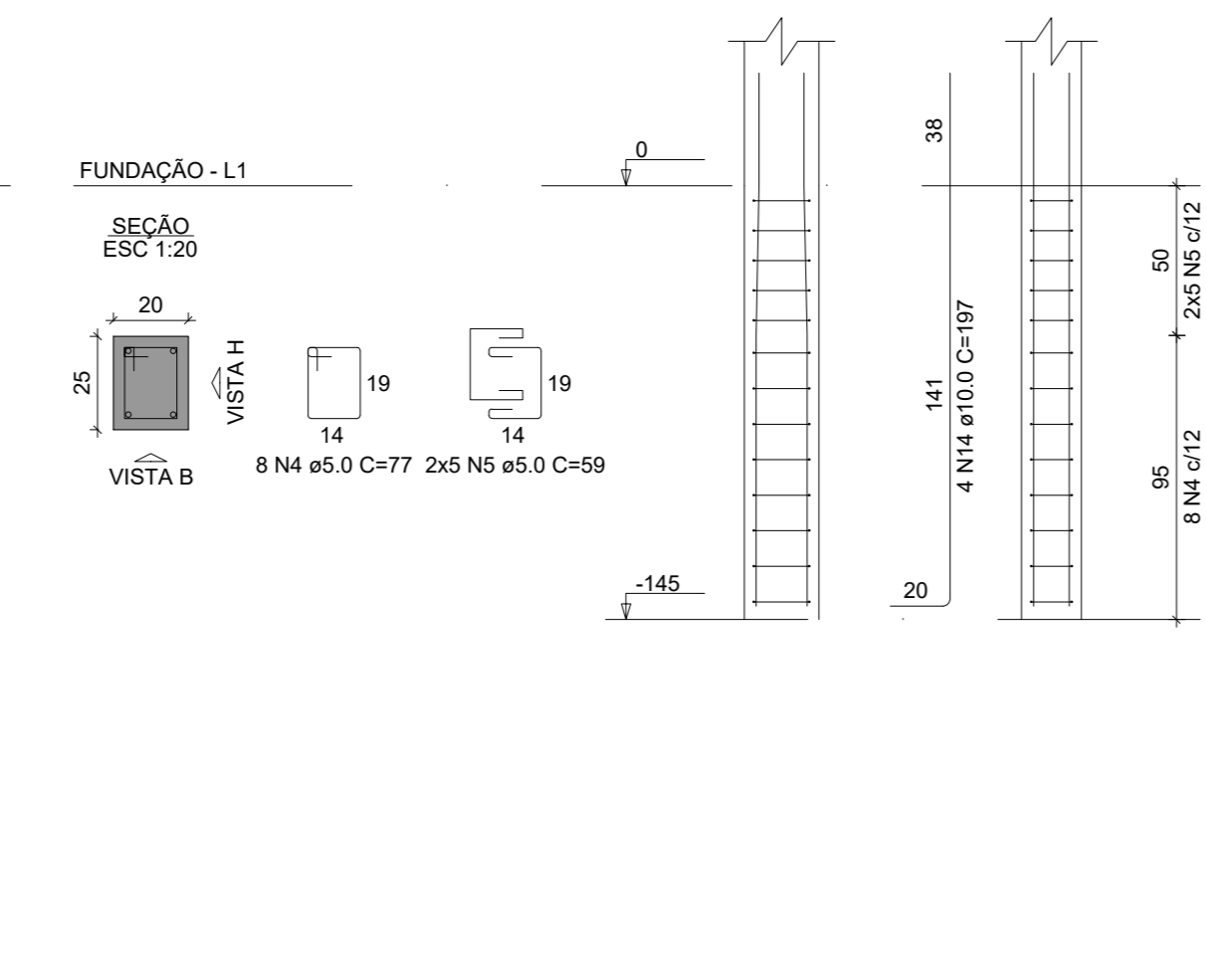


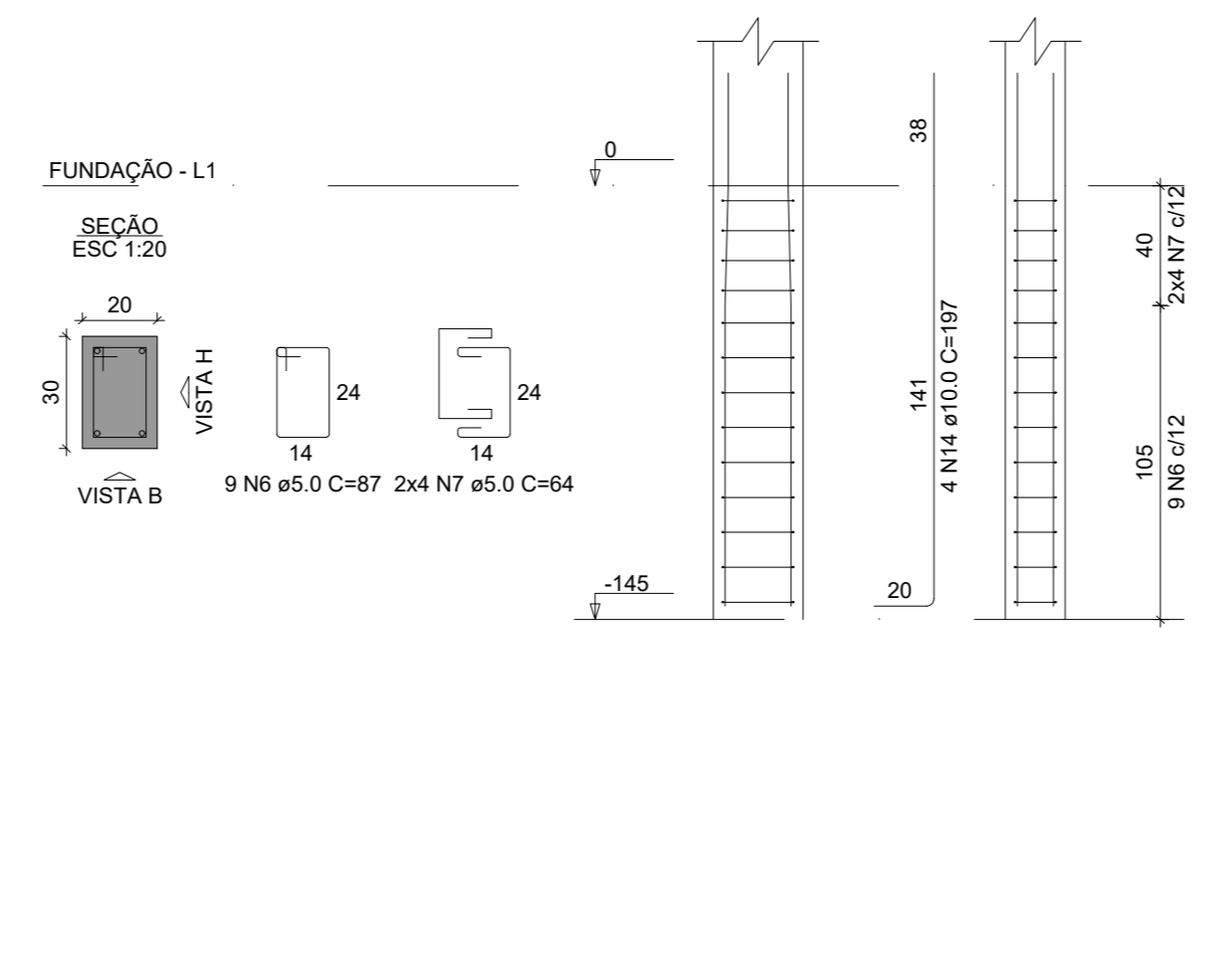
B10=B19=B30=B45
2xR35
PLANTA
ESC 1:25



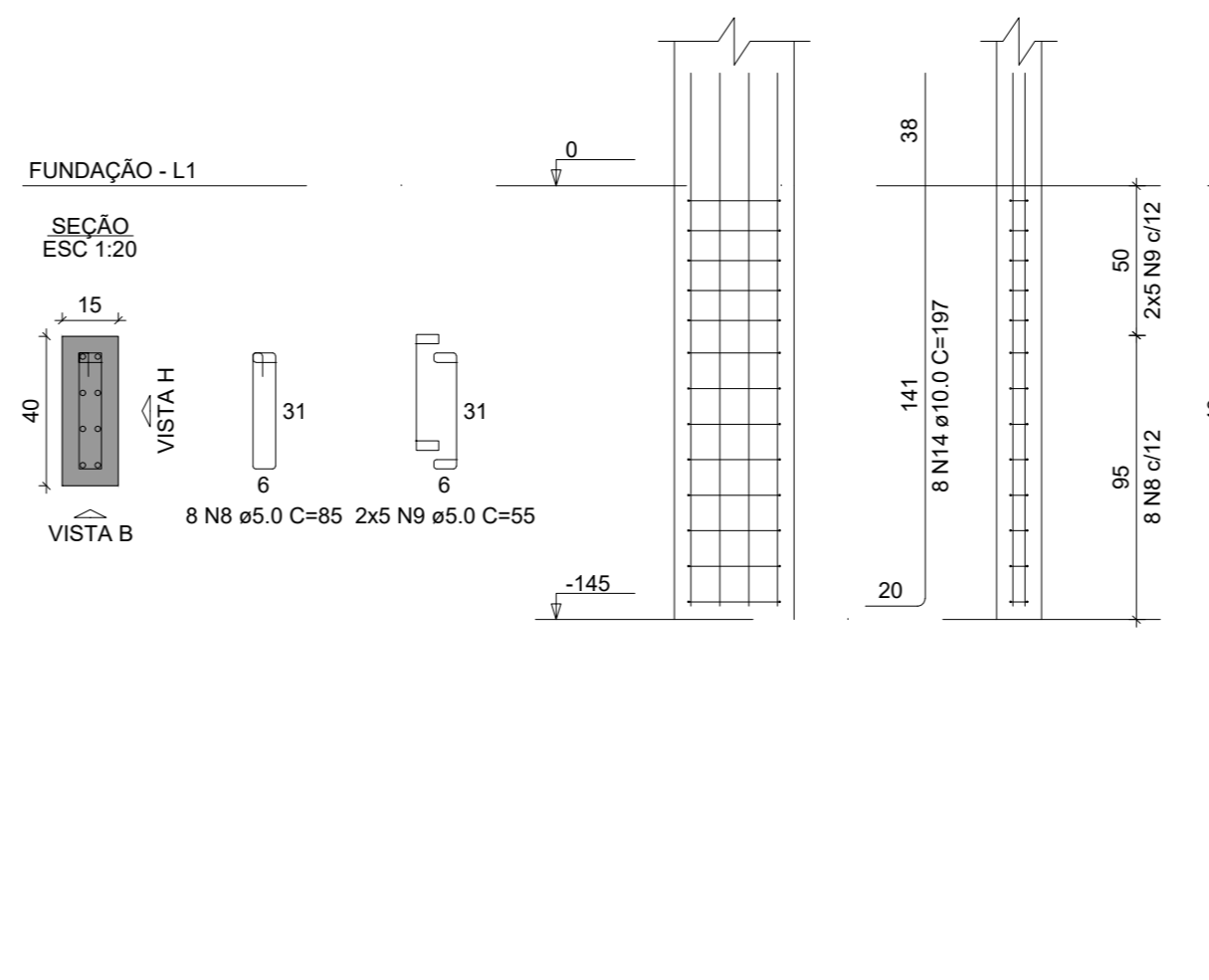
P10



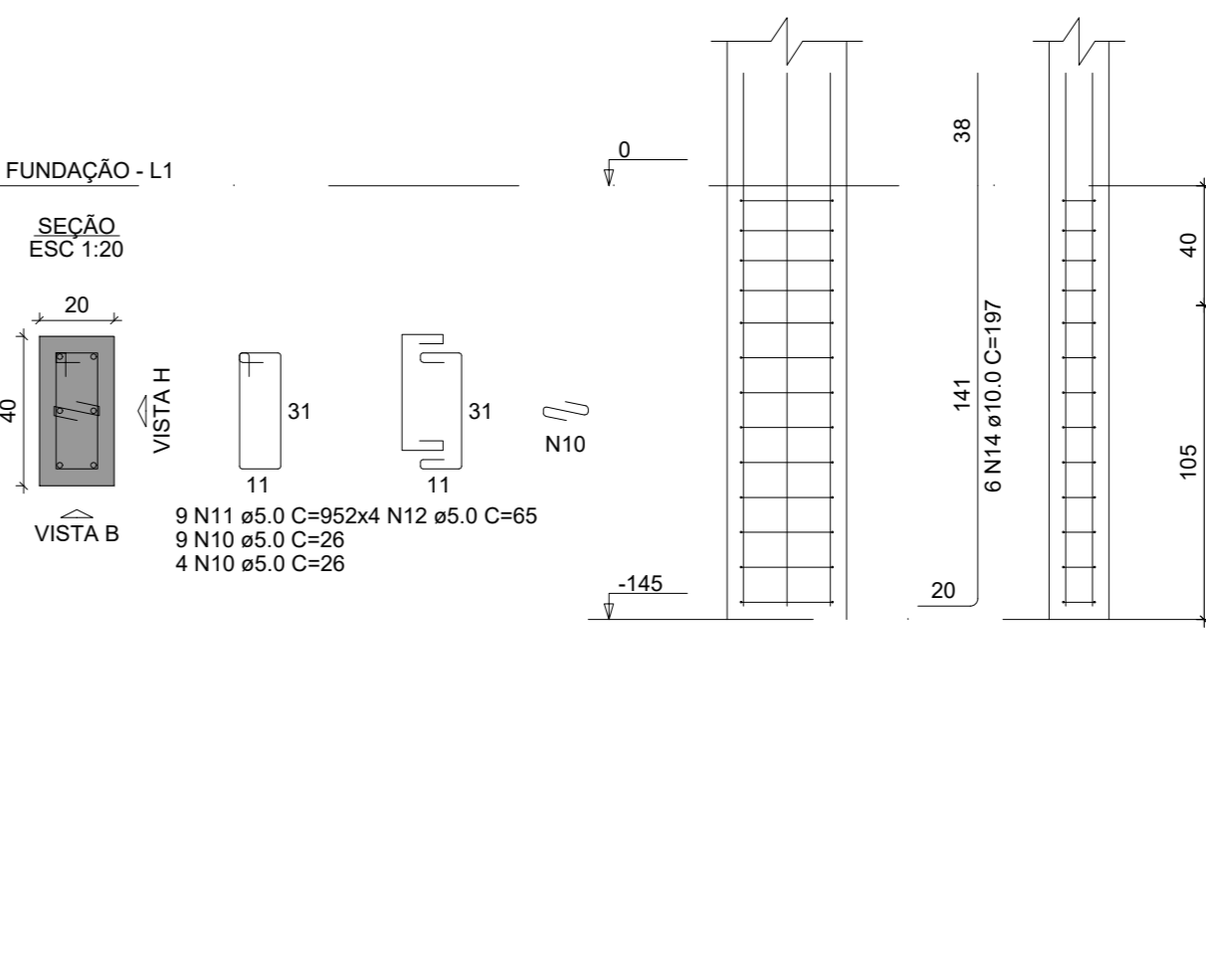
P19



P30



P45



RELAÇÃO DO AÇO

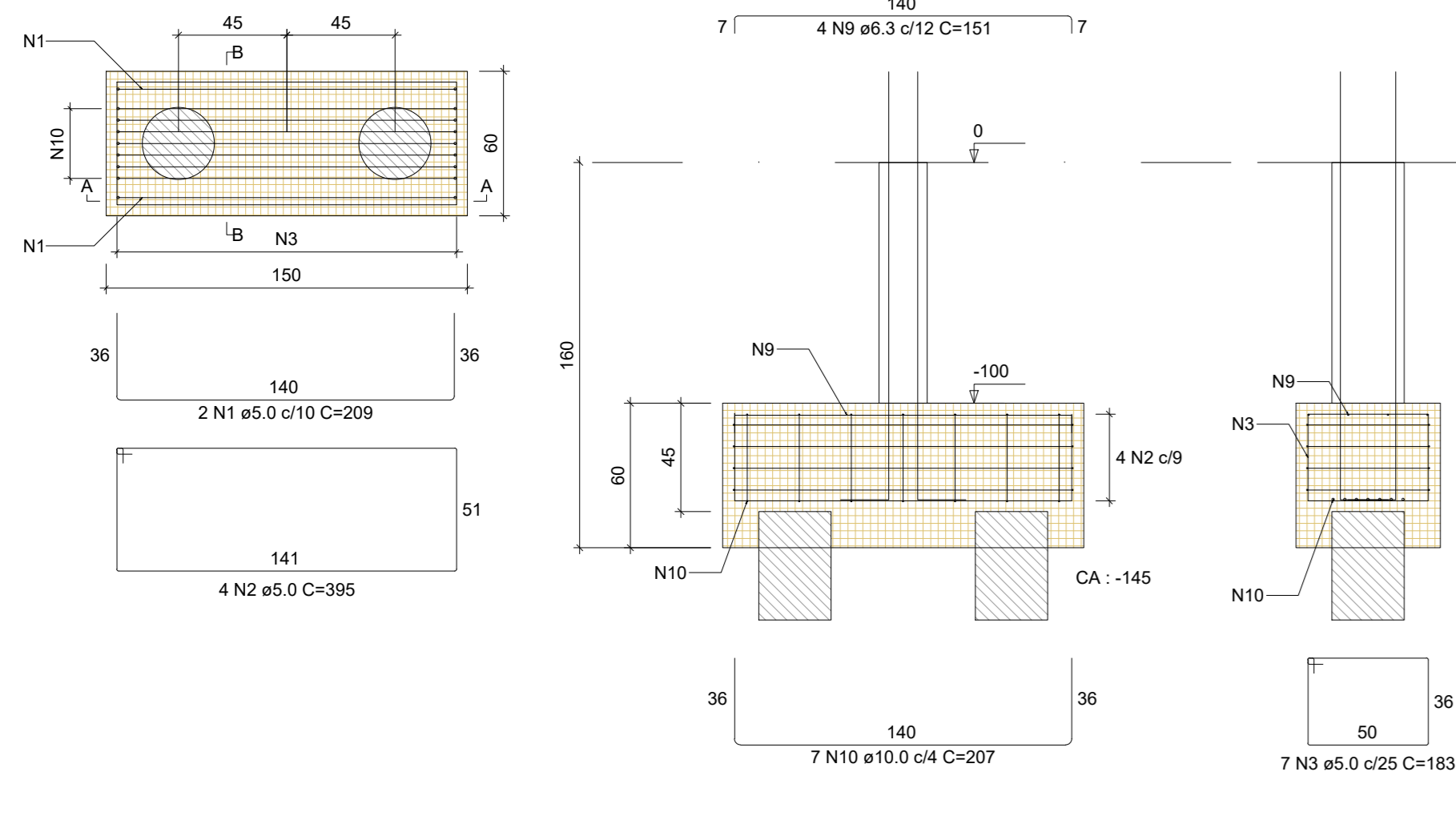
CAO	N	DIAM (mm)	QUANT	C.UNIT (cm)	C.TOTAL (cm)
CAO1	1	5.0	8	209	1672
CAO1	2	5.0	16	395	6320
CAO1	3	5.0	24	177	4248
CAO1	4	5.0	18	87	1566
CAO1	5	5.0	10	64	640
CAO1	6	5.0	9	75	675
CAO1	7	5.0	9	85	765
CAO1	8	5.0	10	85	850
CAO1	9	5.0	13	29	377
CAO1	10	5.0	13	29	377
CAO1	11	5.0	9	85	765
CAO1	12	5.0	9	85	765
CAO1	13	5.0	16	101	1616
CAO1	14	10.0	22	197	4334
CAO1	15	12.5	20	206	4120

RESUMO DO AÇO

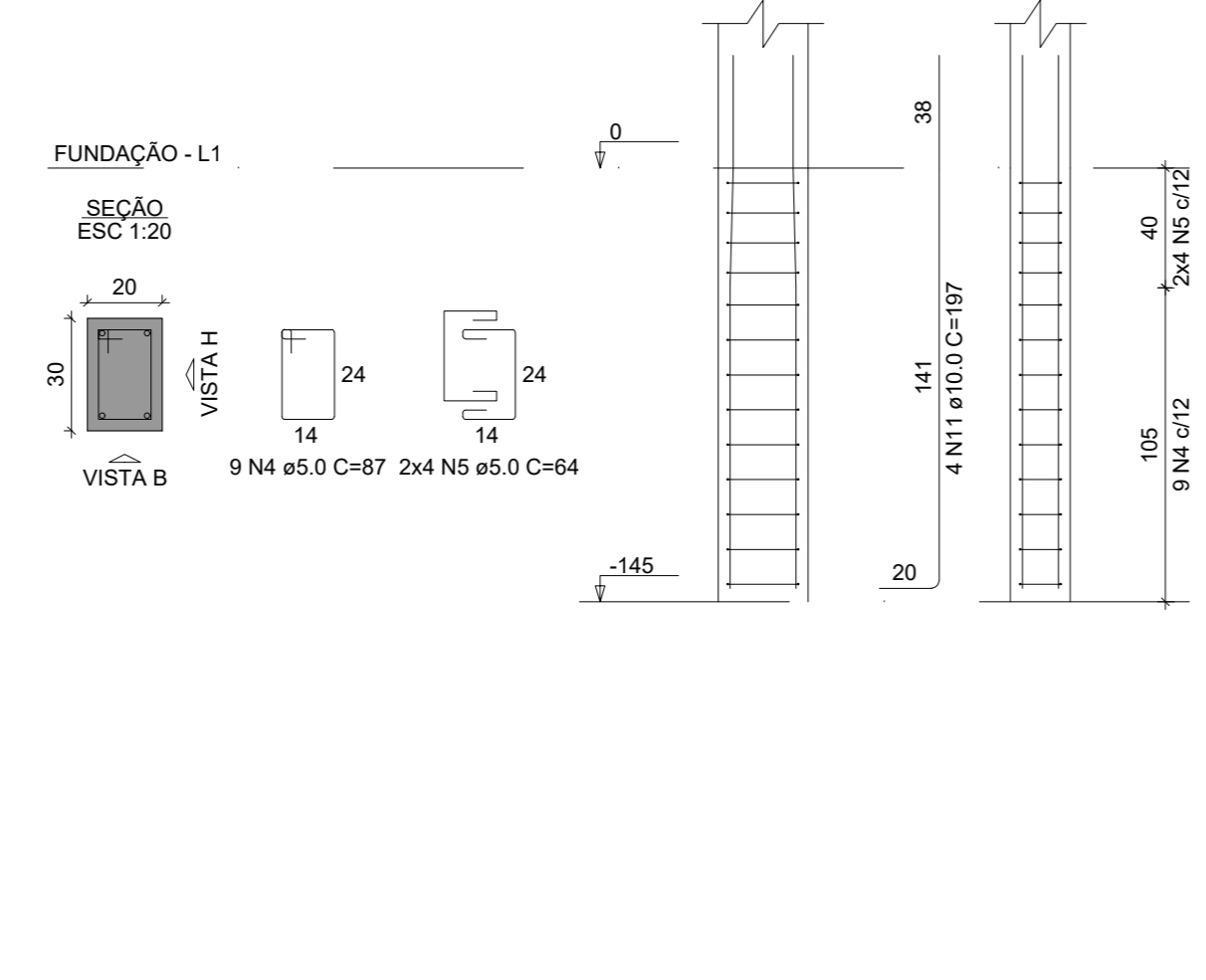
CAO	DIAM (mm)	C.TOTAL (m)	PESO + 10% (kg)
CAO1	5.0	24.2	6.5
CAO1	10.0	43.3	29.4
CAO1	12.5	41.2	43.7
CAO1	5.0	186.6	31.6
PESO TOTAL (kg)			79.6
CAO1			31.5

Volume de concreto (C-25) = 2.33 m³
Área de forma = 14.28 m²

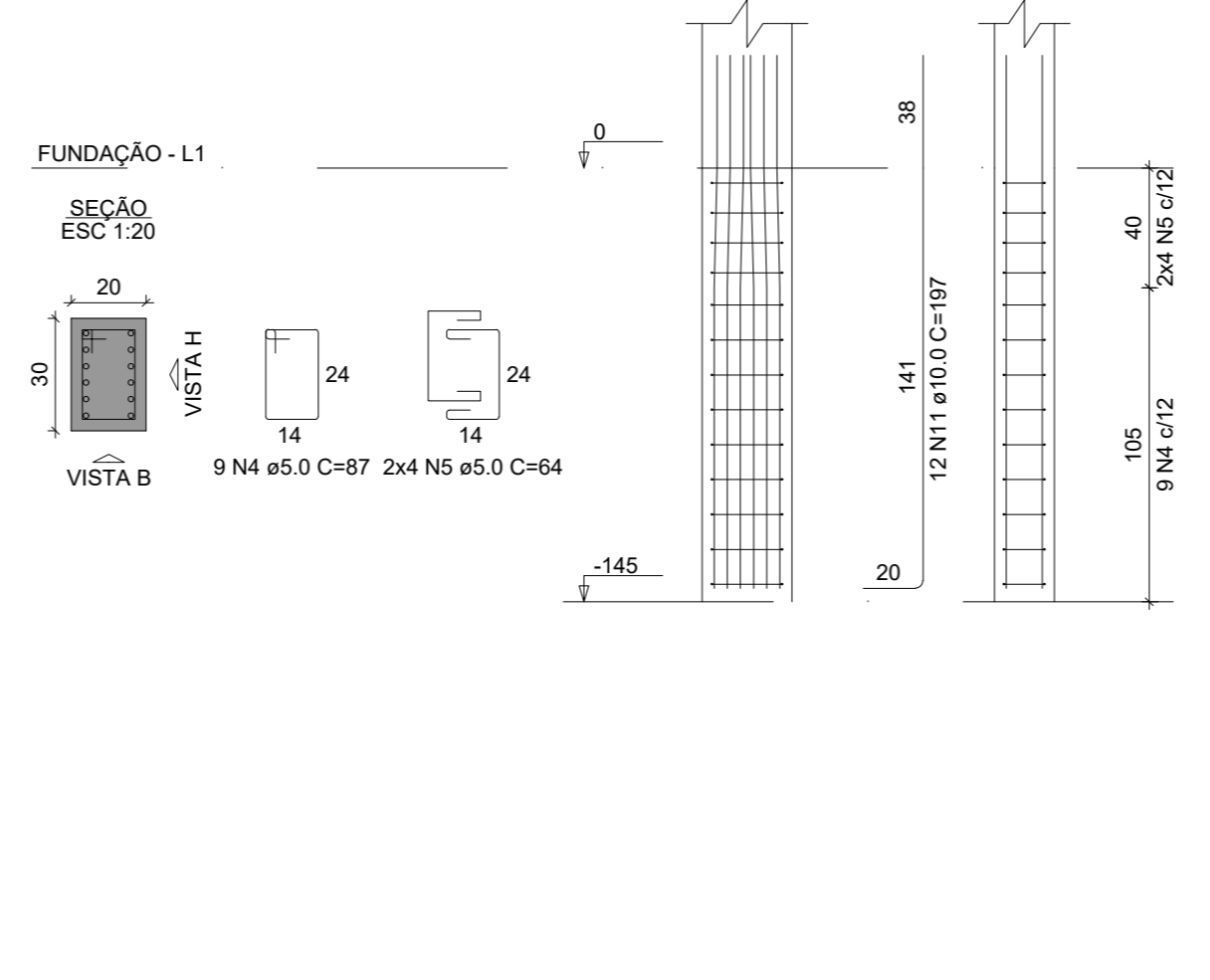
B14=B17=B38=B57
2xR35
PLANTA
ESC 1:25



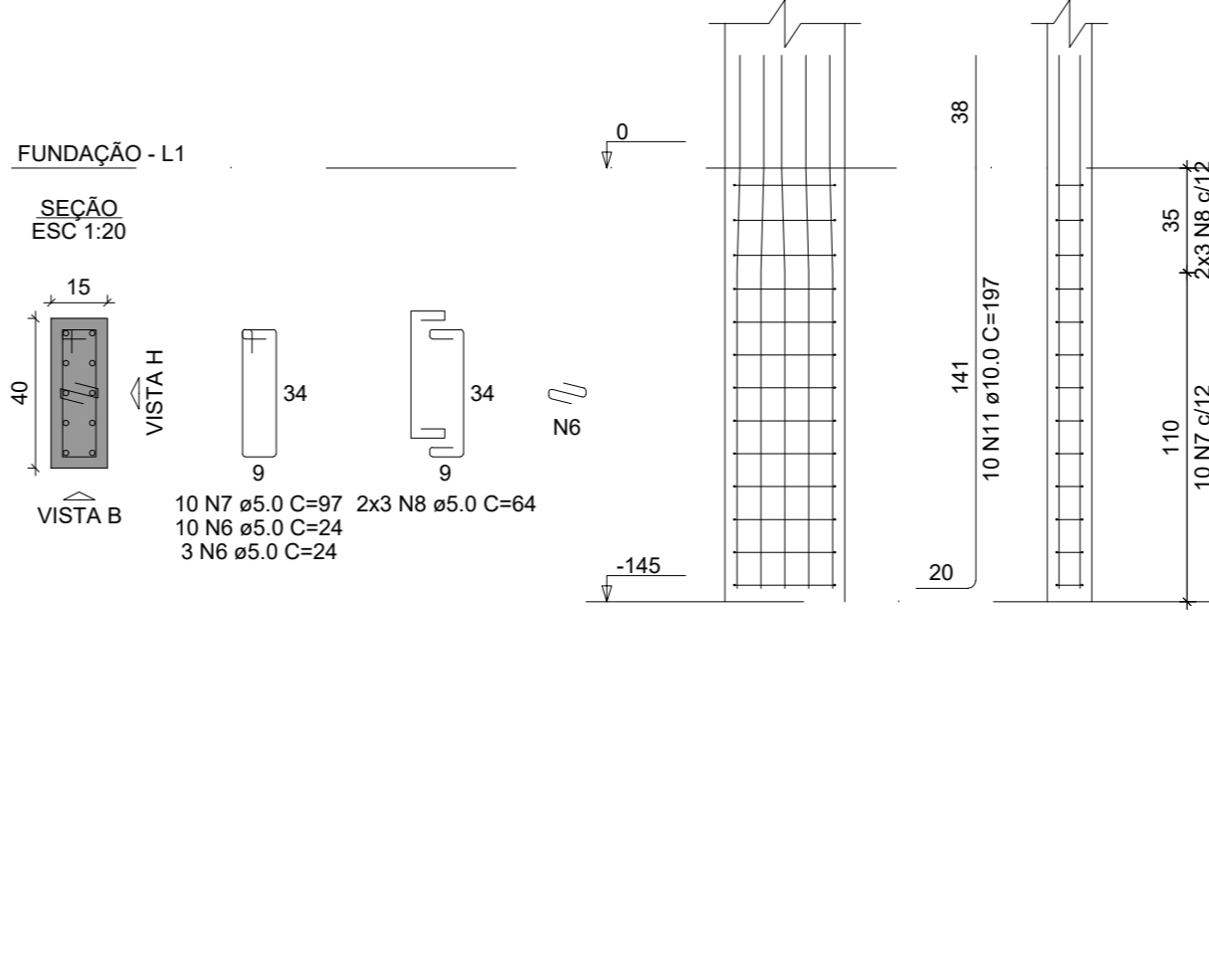
P14



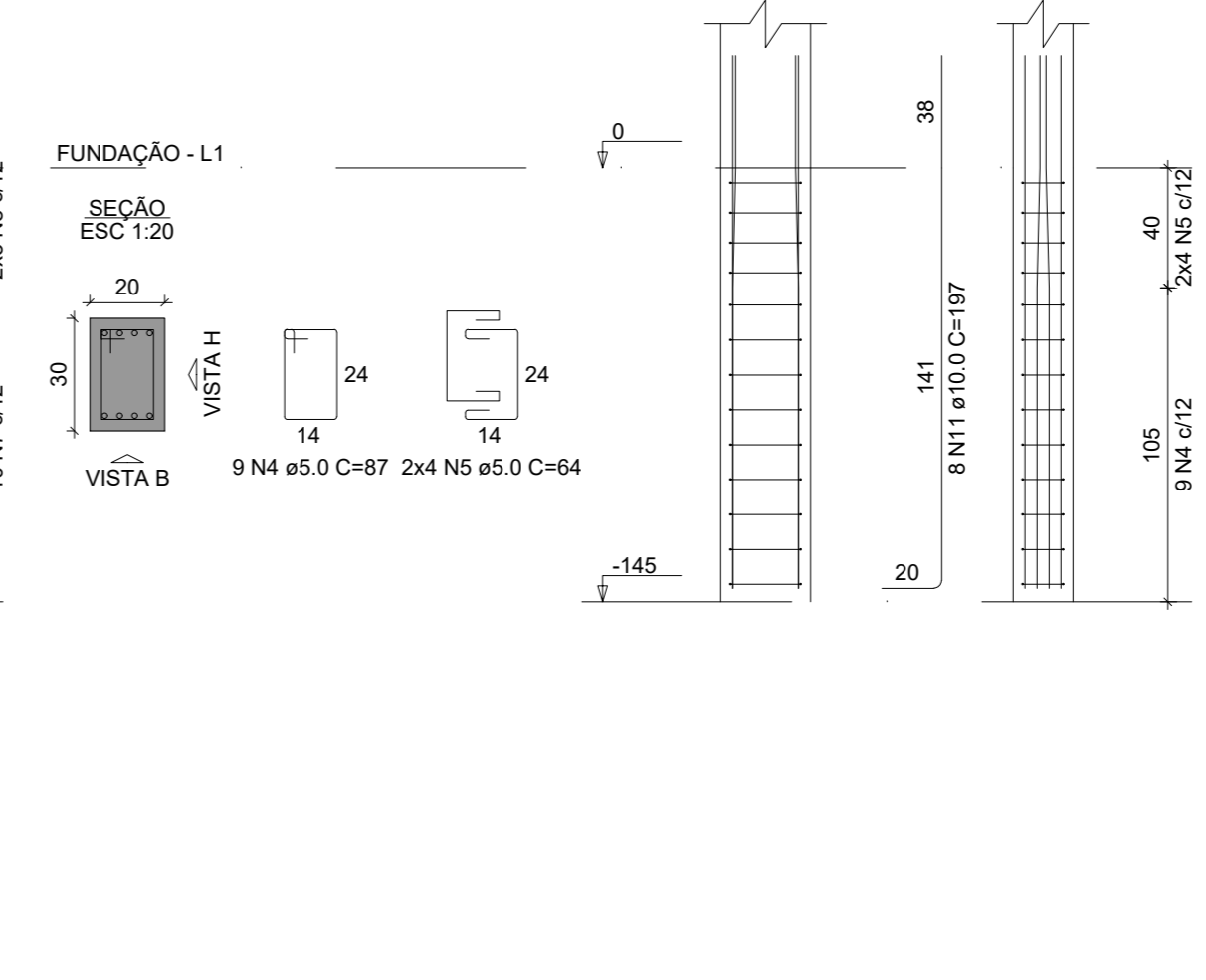
P17



P38



P57



RELAÇÃO DO AÇO

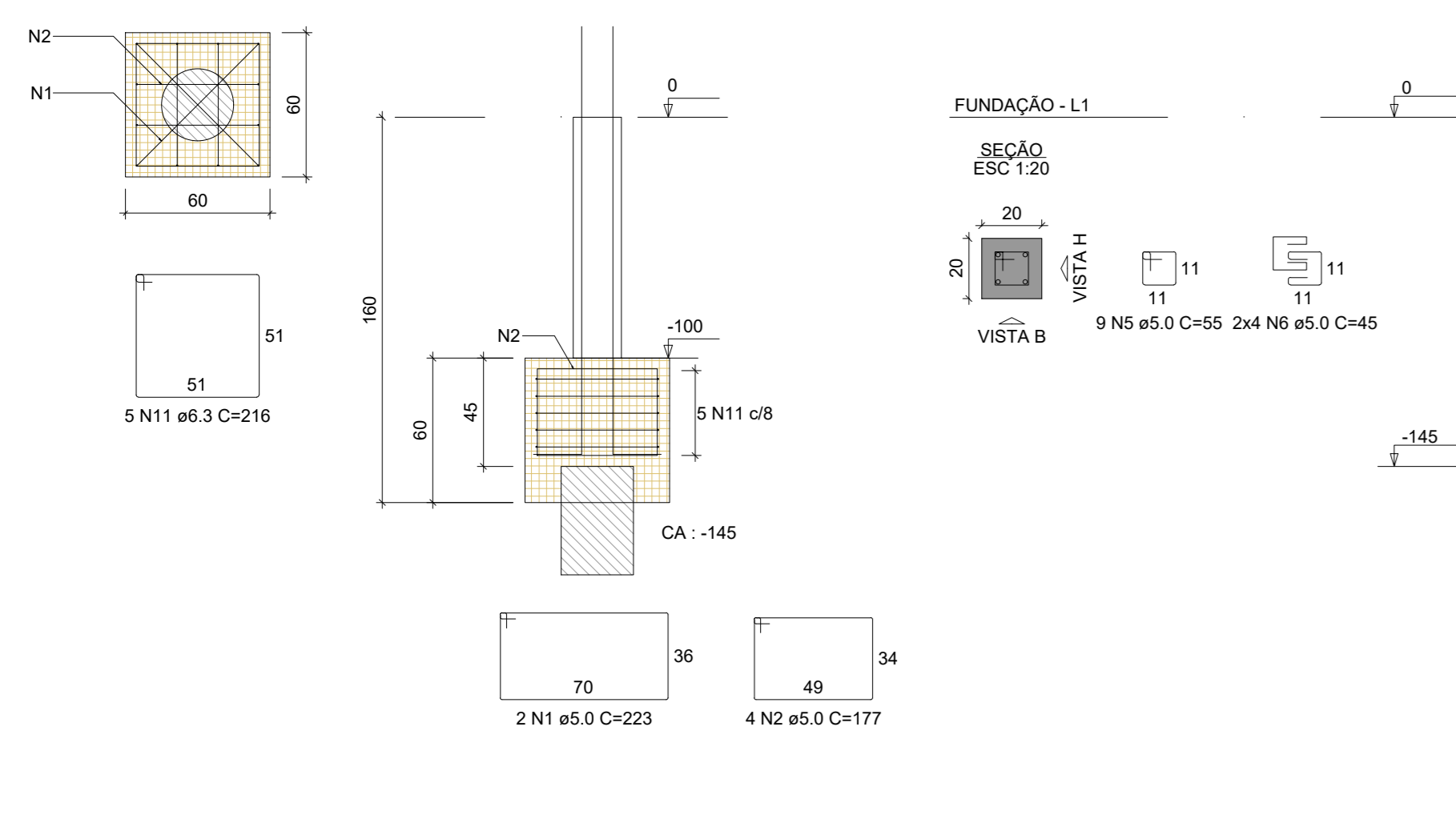
CAO	N	DIAM (mm)	QUANT	C.UNIT (cm)	C.TOTAL (cm)
CAO1	1	5.0	8	209	1672
CAO1	2	5.0	16	395	6320
CAO1	3	5.0	28	183	5124
CAO1	4	5.0	27	240	6480
CAO1	5	5.0	24	64	1536
CAO1	6	5.0	13	31	403
CAO1	7	5.0	10	97	970
CAO1	8	5.0	6	64	384
CAO1	9	6.3	16	151	2416
CAO1	10	10.0	20	378	7560
CAO1	11	10.0	34	187	6698

RESUMO DO AÇO

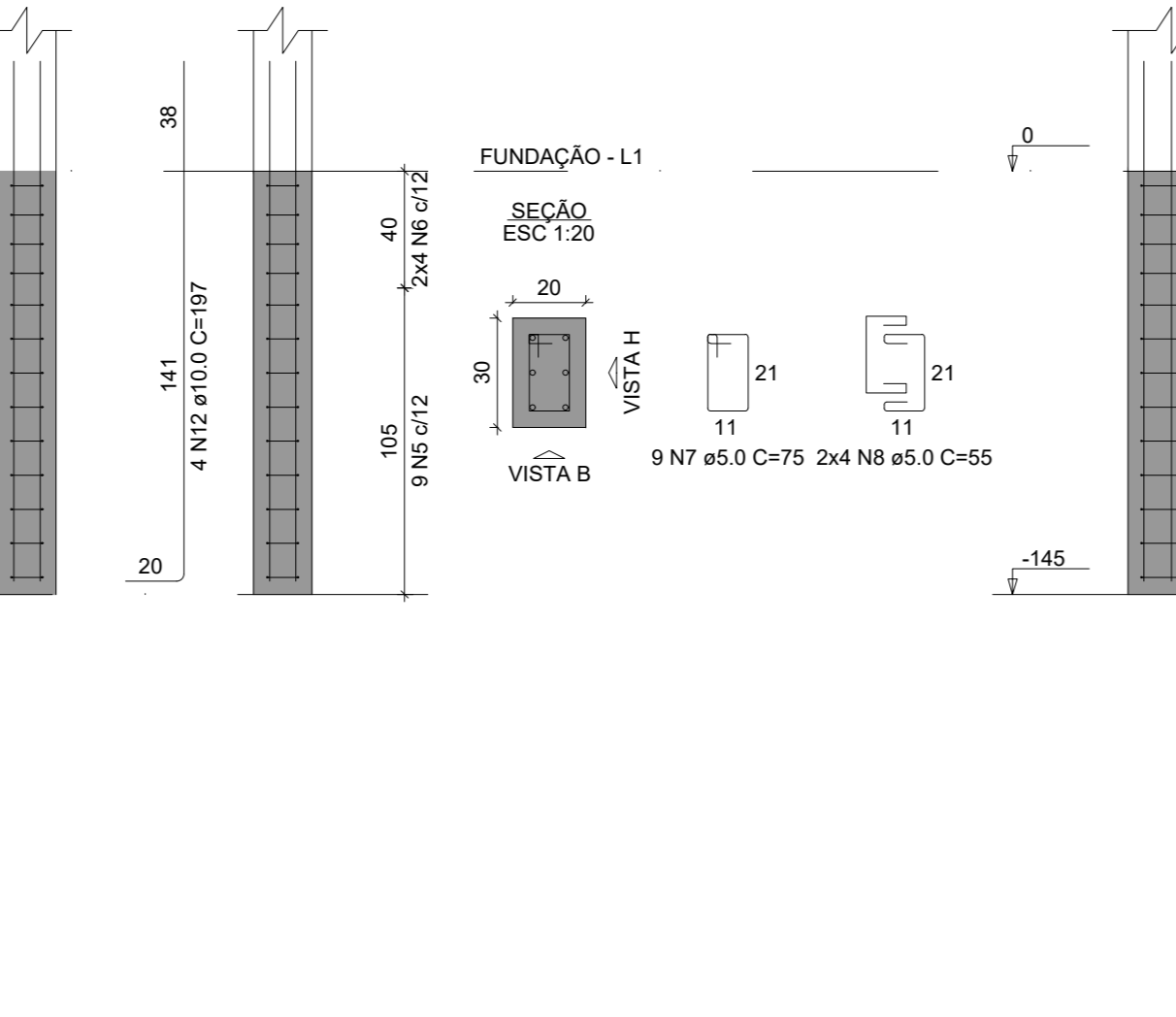
CAO	DIAM (mm)	C.TOTAL (m)	PESO + 10% (kg)
CAO1	5.0	24.2	6.5
CAO1	10.0	124.9	84.7
CAO1	5.0	186.7	31.6
PESO TOTAL (kg)			91.2
CAO1			31.6

Volume de concreto (C-25) = 2.32 m³
Área de forma = 14.15 m²

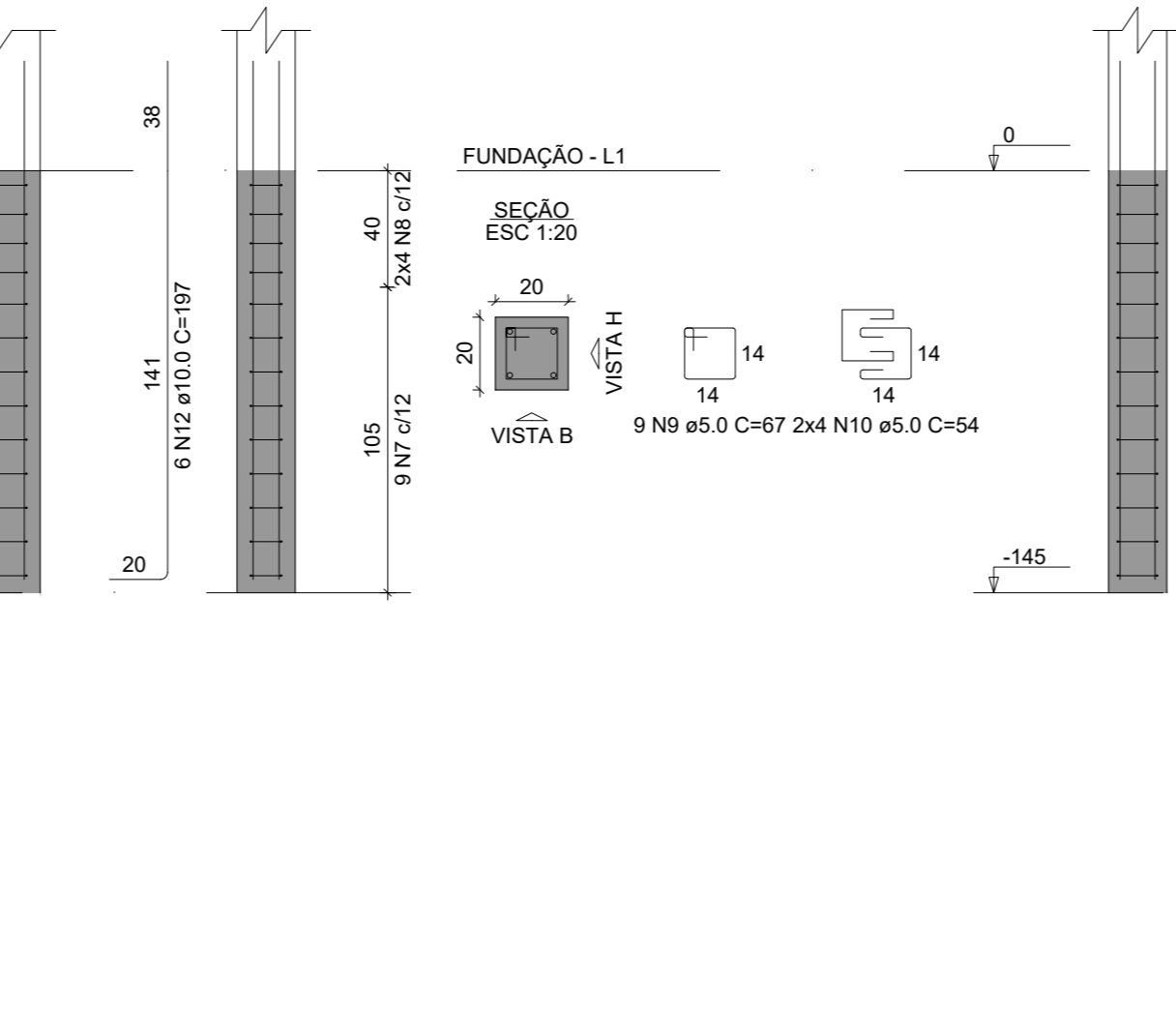
B25=B27=B34=B44=B52=B56
1xR35
PLANTA
ESC 1:25



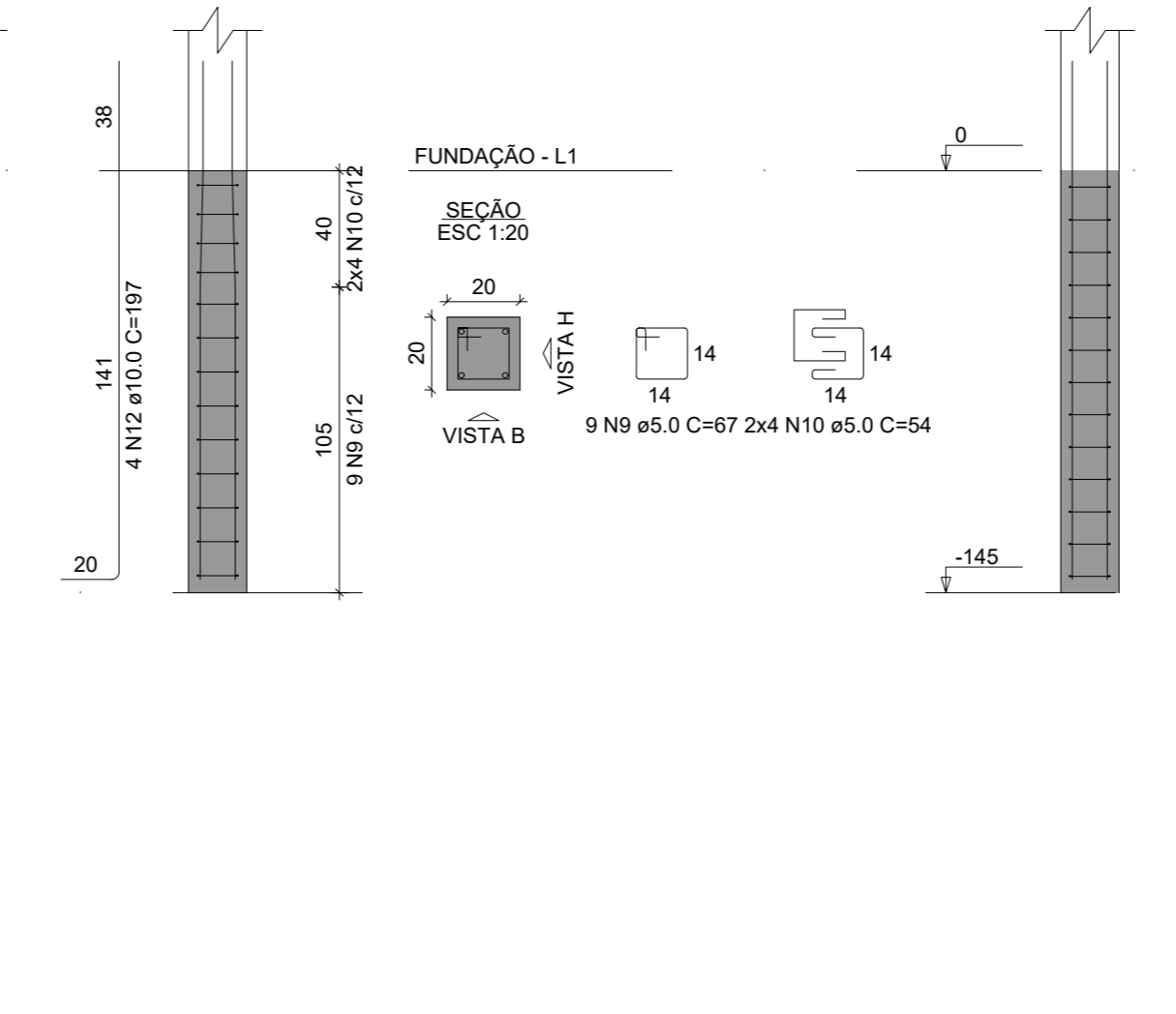
P27



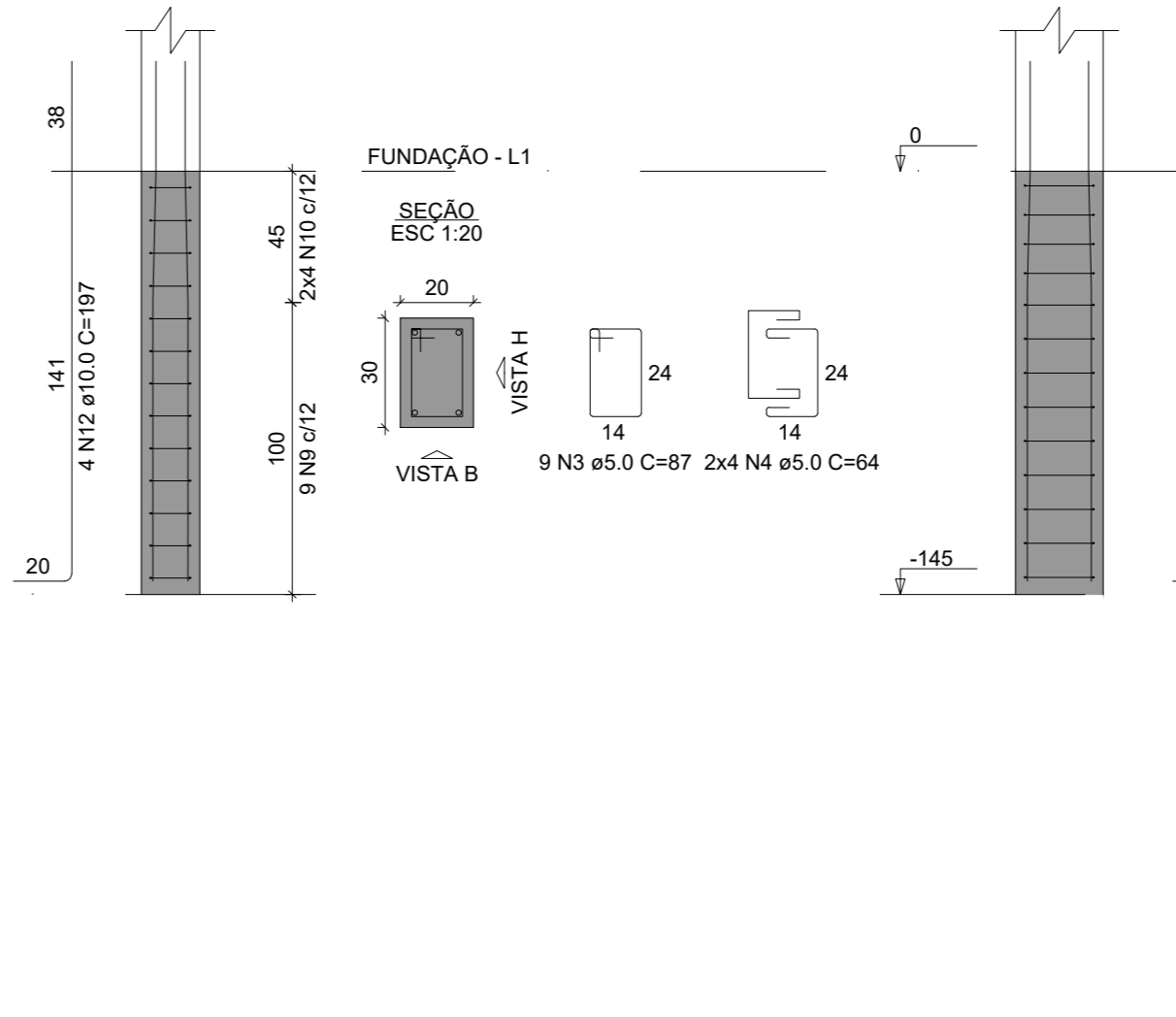
P34



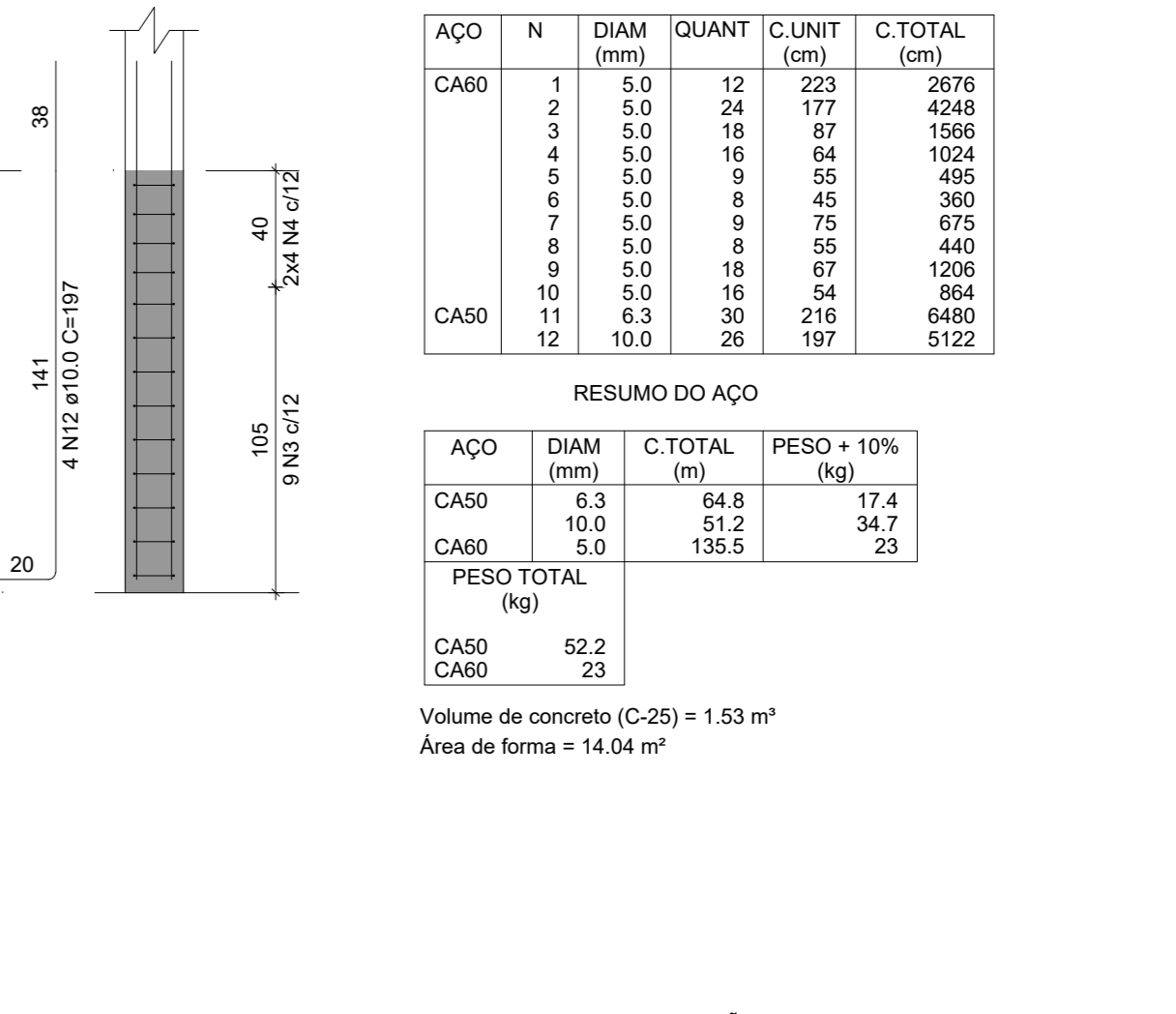
P44



P52



P25=P56



RELAÇÃO DO AÇO

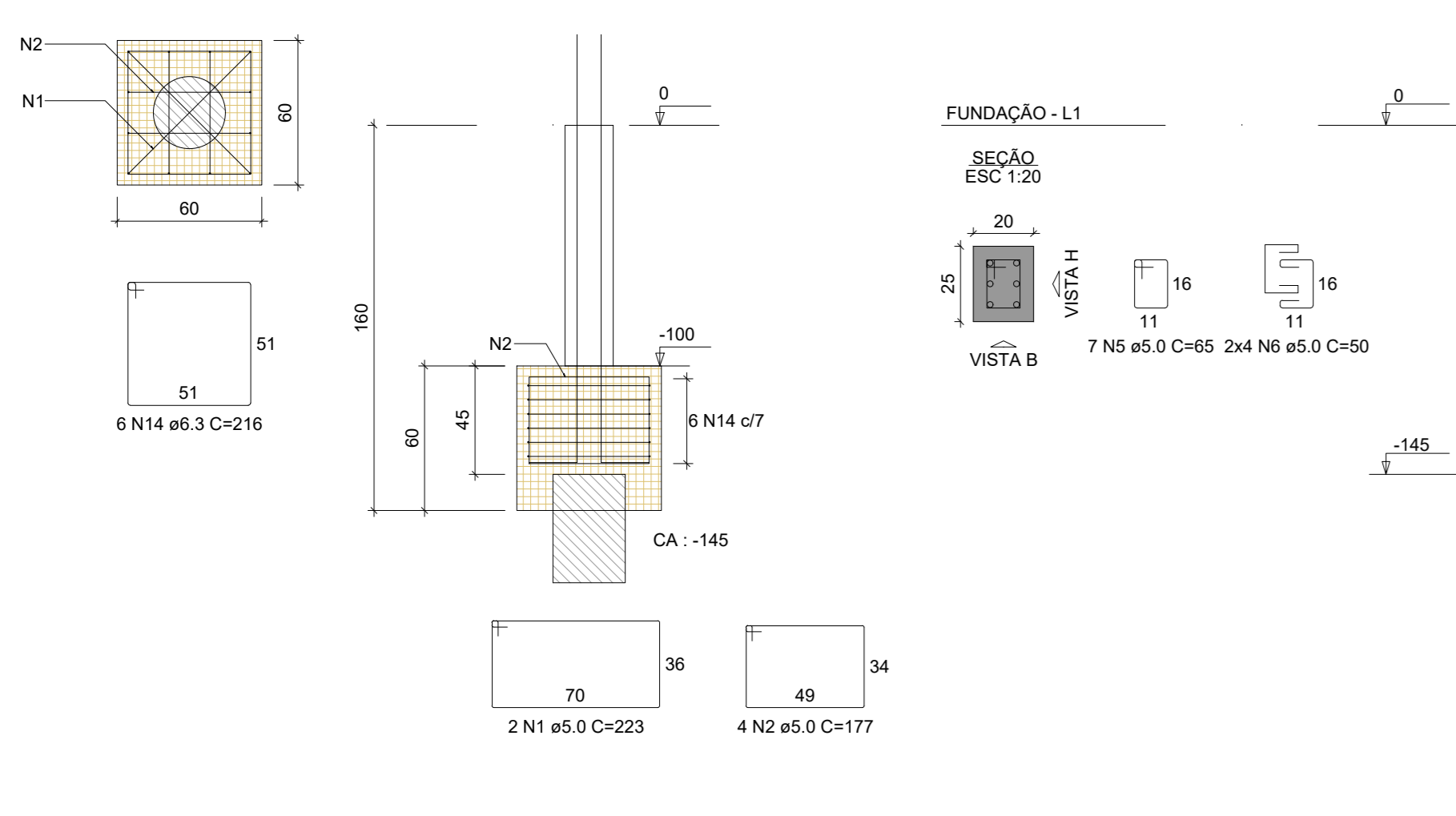
CAO	N	DIAM (mm)	QUANT	C.UNIT (cm)	C.TOTAL (cm)
CAO1	1	5.0	12	223	2676
CAO1	2	5.0	24	177	4248
CAO1	3	5.0	18	87	1566
CAO1	4	5.0	16	64	1024
CAO1	5	5.0	9	35	380
CAO1	6	5.0	9	42	450
CAO1	7	5.0	9	75	855
CAO1	8	5.0	18	67	1206
CAO1	9	5.0	16	54	864
CAO1	10	5.0	30	216	6480
CAO1	11	5.0	25	197	4925

RESUMO DO AÇO

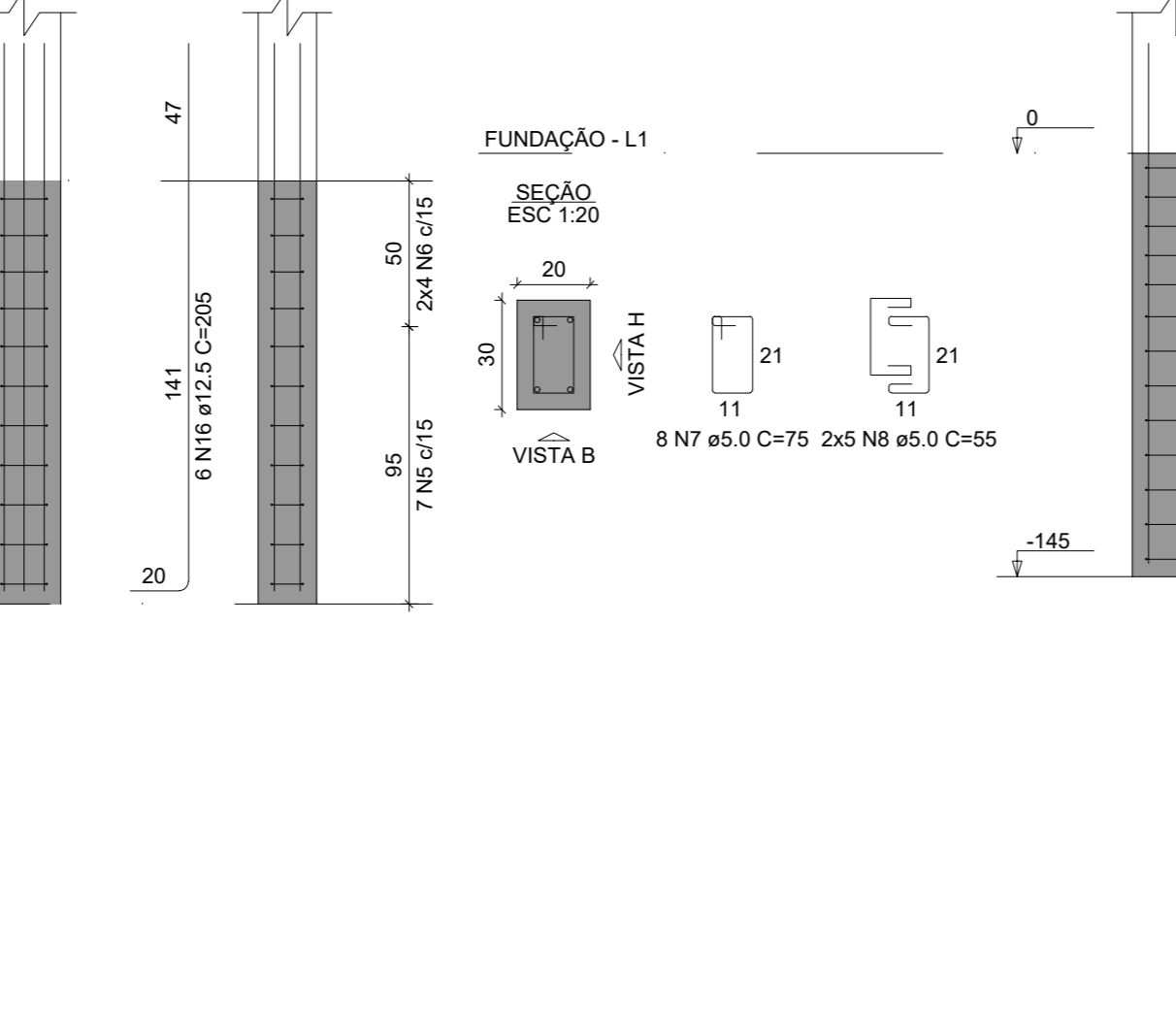
CAO	DIAM (mm)	C.TOTAL (m)	PESO + 10% (kg)
CAO1	5.0	61.8	17.4
CAO1	10.0	51.2	34.7
CAO1	5.0	135.5	23
PESO TOTAL (kg)			92.2
CAO1			23

Volume de concreto (C-25) = 1.53 m³
Área de forma = 14.04 m²

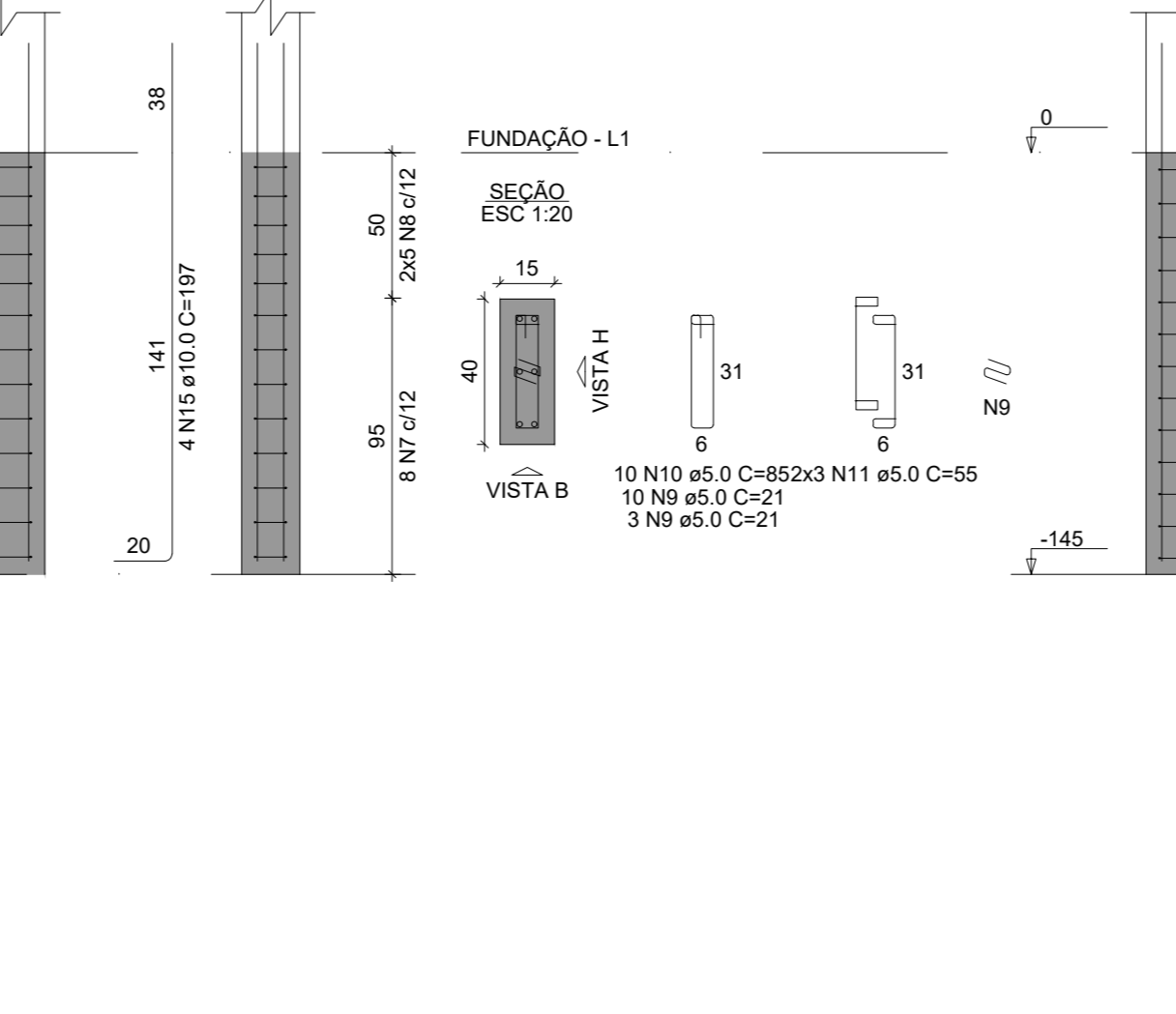
B28=B29=B32=B41=B58=B59=B60
1xR35
PLANTA
ESC 1:25



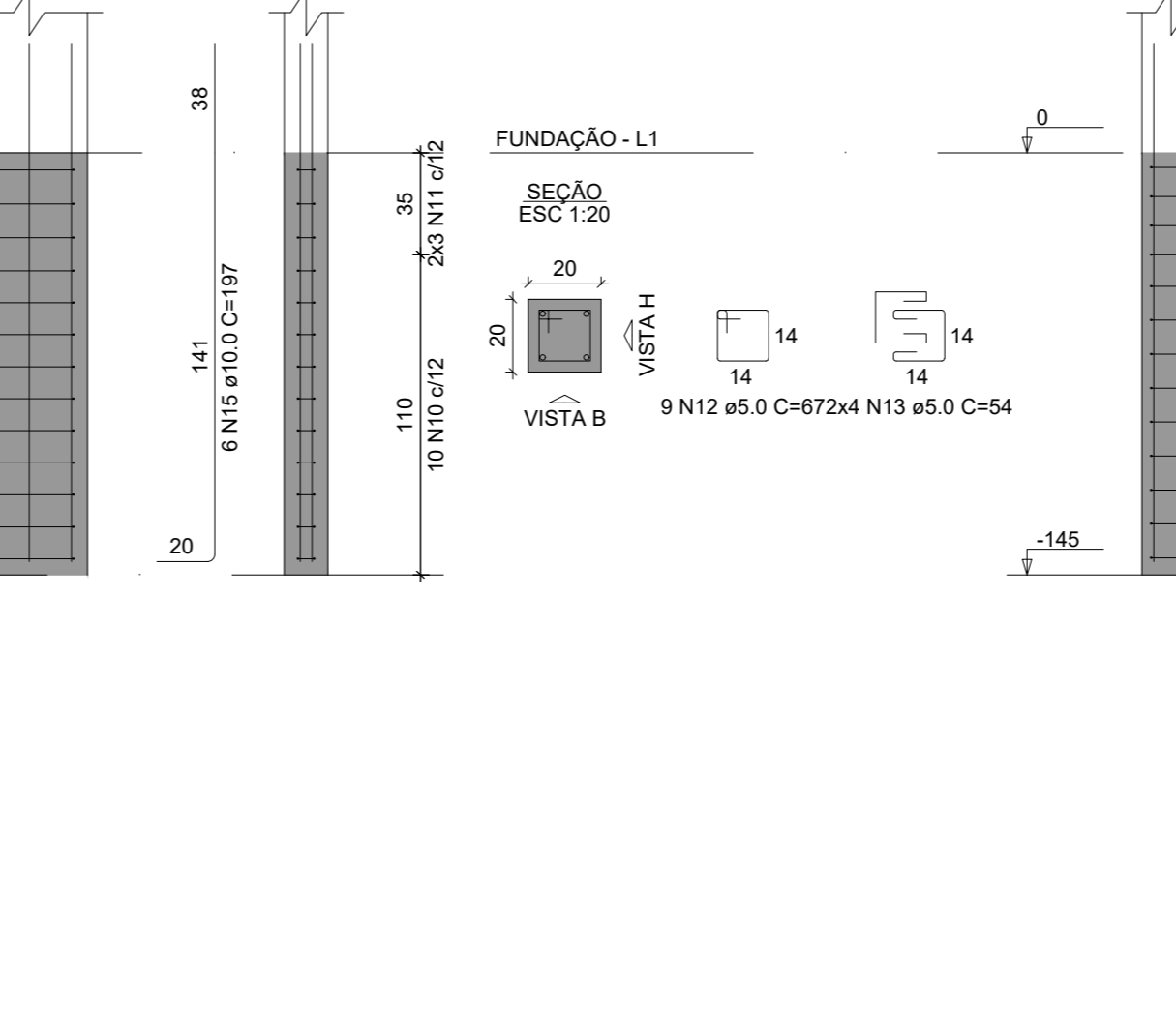
P29



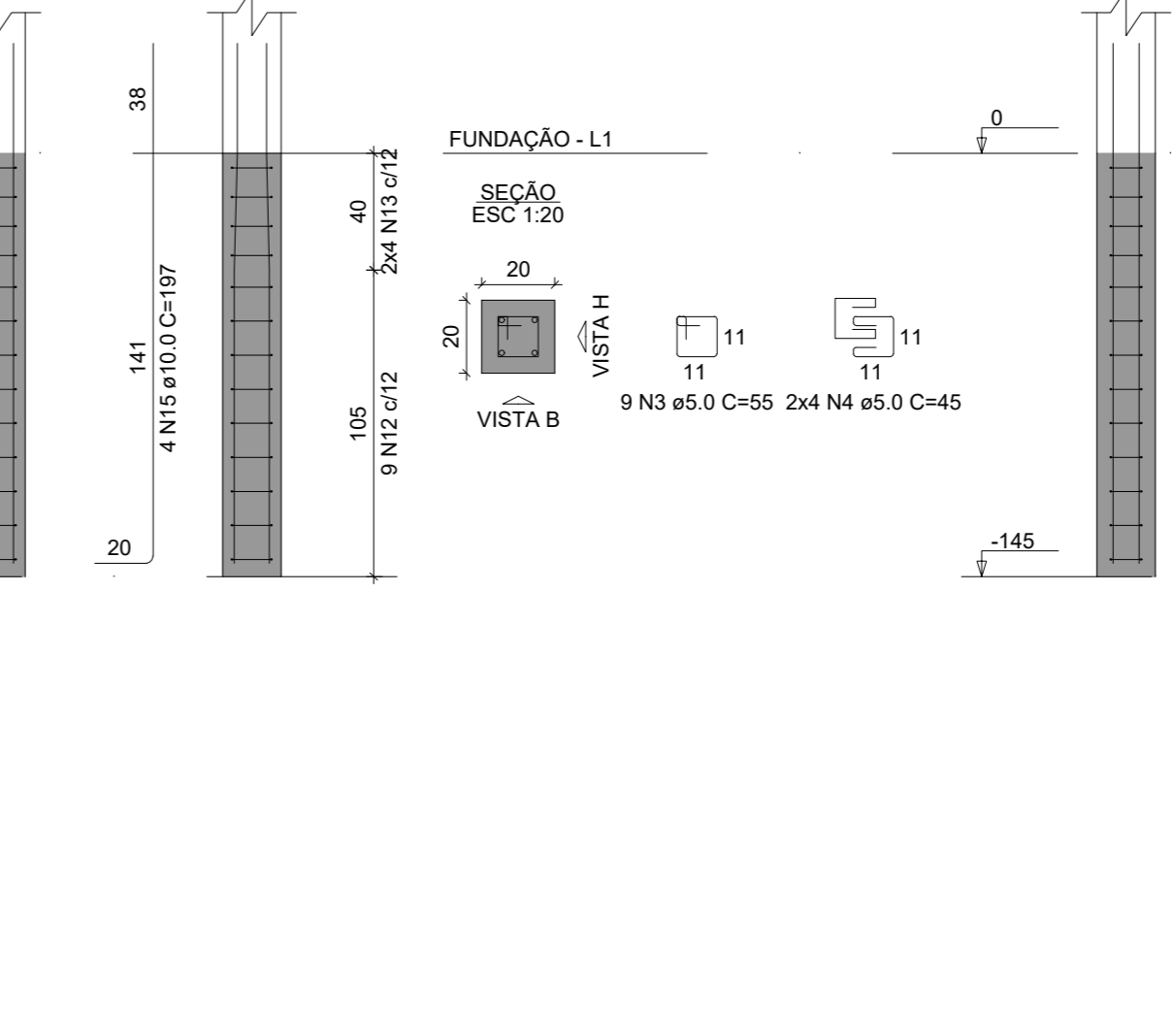
P32



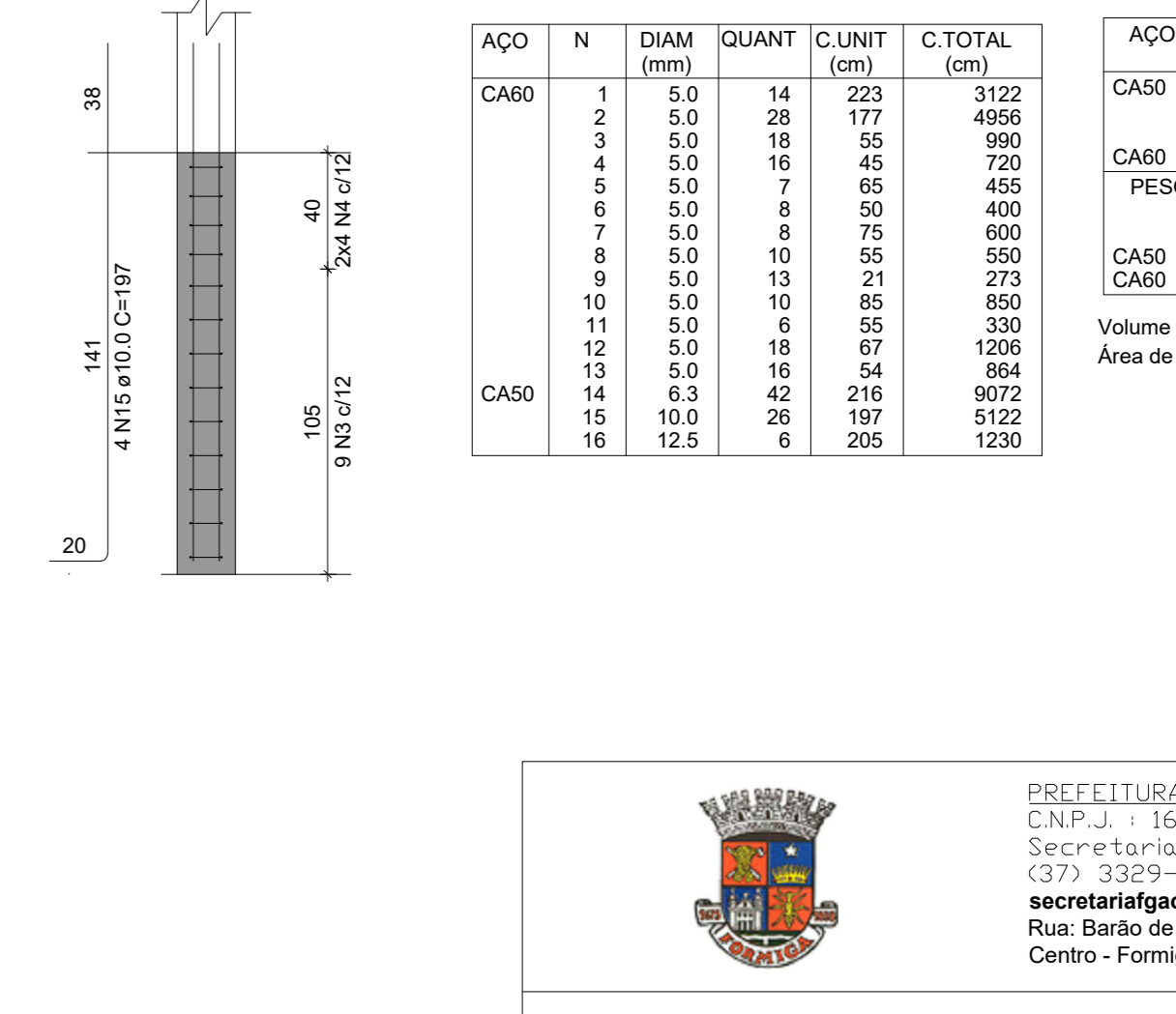
P41



P58=P59



P28=P60



RELAÇÃO DO AÇO

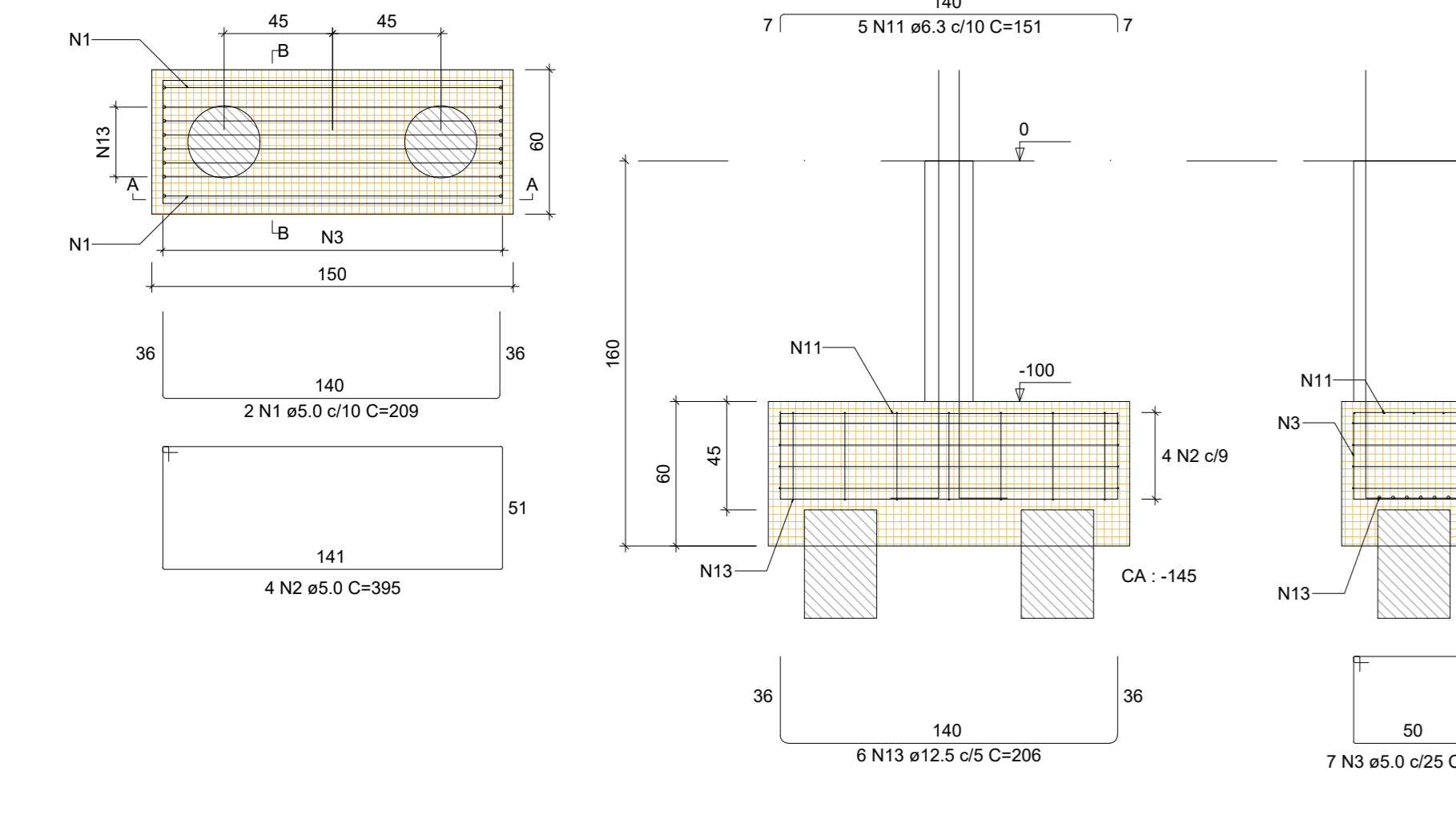
CAO	N	DIAM (mm)	QUANT	C.UNIT (cm)	C.TOTAL (cm)
CAO1	1	5.0	14	223	3122
CAO1	2	5.0	24	177	4248
CAO1	3	5.0	18	87	1566
CAO1	4	5.0	16	64	1024
CAO1	5	5.0	9	35	400
CAO1	6	5.0	9	42	450
CAO1	7	5.0	9	75	855
CAO1	8	5.0	10	55	550
CAO1	9	5.0	10	85	850
CAO1	10	5.0	10	85	850
CAO1	11	5.0	16	67	1072
CAO1	12	5.0	16	67	1072
CAO1	13	5.0	16	54	864
CAO1	14	6.3	42	216	9072
CAO1	15	10.0	26	197	5122
CAO1	16	12.5	6	205	1230

RESUMO DO AÇO

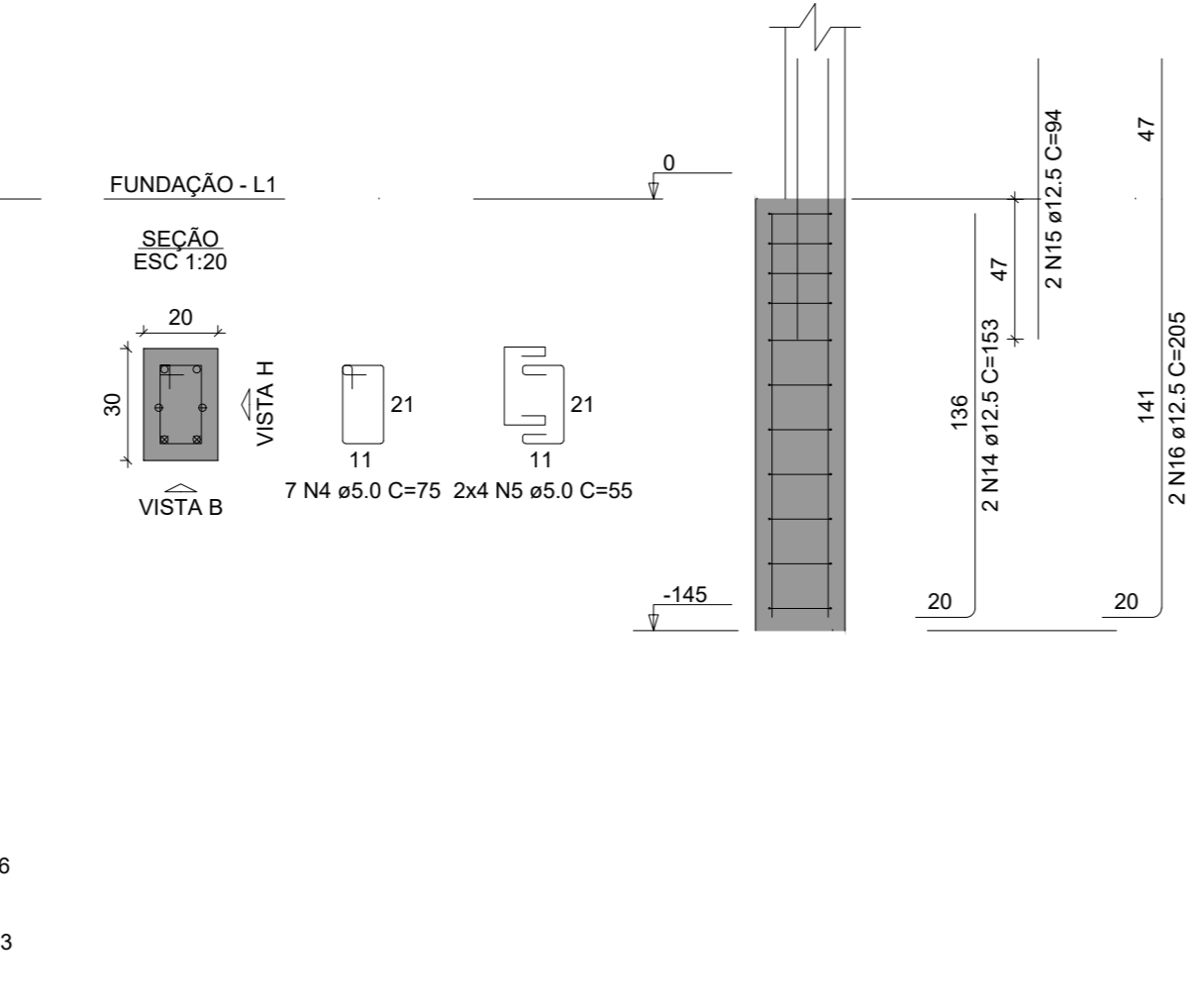
CAO	DIAM (mm)	C.TOTAL (m)	PESO + 10% (kg)
CAO1	5.0	90.7	24.4
CAO1	10.0	51.2	34.7
CAO1	5.0	153.2	28
PESO TOTAL (kg)			72.2
CAO1			26

Volume de concreto (C-25) = 1.77 m³
Área de forma = 16.28 m²

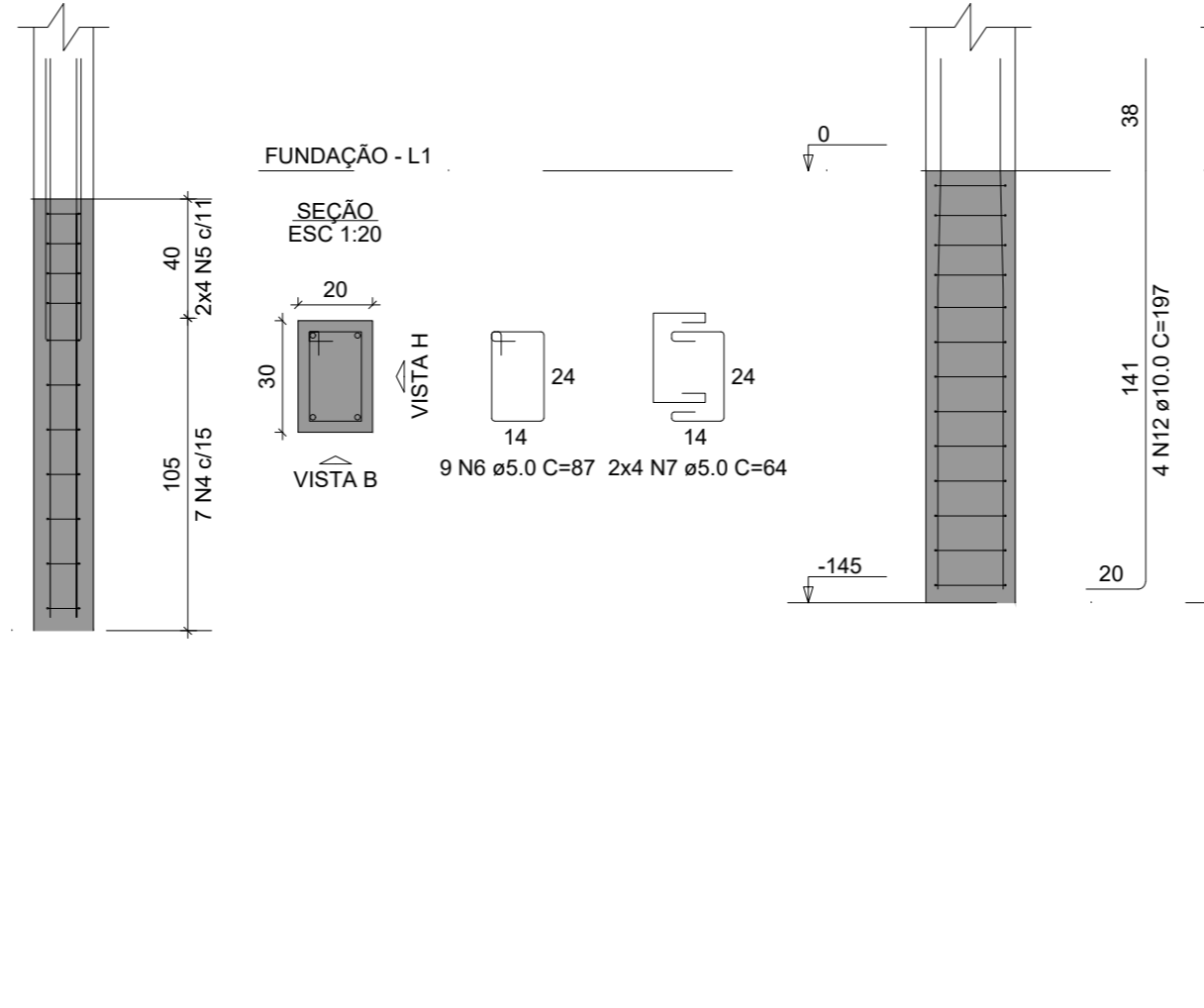
B35=B46=B49
2xR35
PLANTA
ESC 1:25



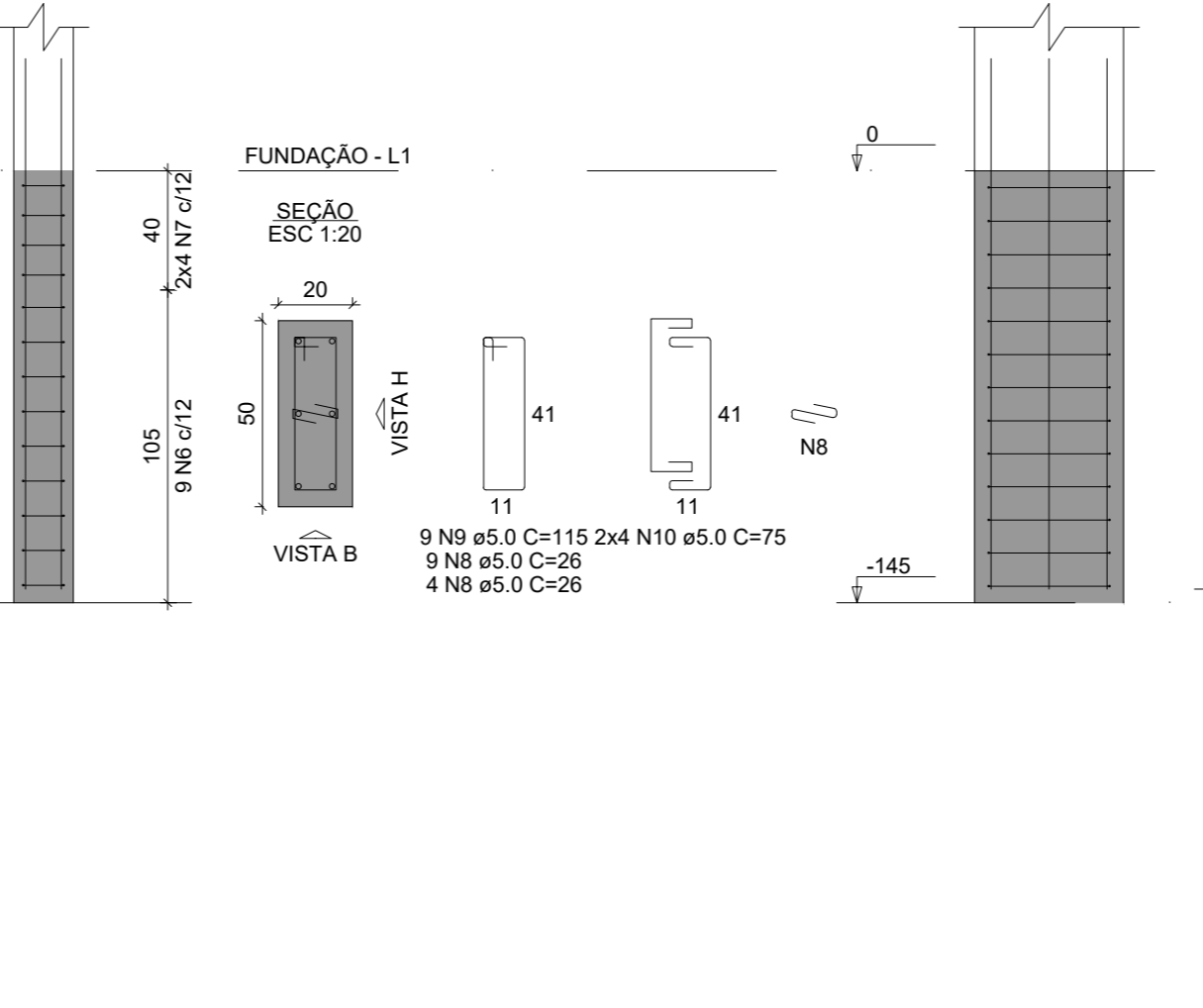
P35



P46



P49



RELAÇÃO DO AÇO

CAO	N	DIAM (mm)	QUANT	C.UNIT (cm)	C.TOTAL (cm)
CAO1	1	5.0	15	209	3135
CAO1	2	5.0	15	395	5925
CAO1	3	5.0	21	183	3843
CAO1	4	5.0	17	87	1479
CAO1	5	5.0	9	35	315
CAO1	6	5.0	9	42	378
CAO1	7	5.0	9	75	1035
CAO1	8	5.0	10	55	550
CAO1	9	5.0	10	85	850
CAO1	10	5.0	10	85	850
CAO1	11	5.0	16	67	1072
CAO1	12	5.0	16	67	1072
CAO1	13	5.0	16	54	864
CAO1	14	6.3	42	216	9072
CAO1	15	10.0	26	197	5122
CAO1	16	12.5	6	205	1230

RESUMO DO AÇO

CAO	DIAM (mm)	C.TOTAL (m)	PESO + 10% (kg)
CAO1	5.0	22.7	6.1
CAO1	10.0	19.7	13.4
CAO1	12.5	46.4	28.9
PESO TOTAL (kg)			68.3
CAO1			23.9

Volume de concreto (C-25) = 1.78 m³
Área de forma = 13.96 m²

PREFEITURA MUNICIPAL DE FORMIGA
C.N.P.J. - 16.781.720/0001-25
Secretaria de Obras e Trânsito
Rua Barão de Piumhi, nº 121
Centro - Formiga (MG) - Cep. 35570-000

Título: PROJETO ESTRUTURAL

Finalidade: SEDE SECRETARIAS DE OBRAS E TRÂNSITO E REGULAÇÃO URBANA

Detalhes: ARMAÇÃO, PILARES E VIGA LAJE INCLINADA

Endereço Obra/Serviço: RUA CORONEL JOSÉ GONÇALVES D'AMARANTE, 83, CENTRO

Coordenadas:

EUGÊNIO VILELA JUNIOR
PREFEITO MUNICIPAL DE FORMIGA

LORENA DE PAIVA ARANTES
ENGENHEIRA CIVIL - CREA: 234.399/D

Escala: INDICADA **Desenho: LORENA A.** **Data: SET./2022** **Prancha: 09/28**