

**B47 2xR35**  
PLANTA ESC 1:25

CORTE A-A ESC 1:25

CORTE B-B ESC 1:25

RELAÇÃO DO AÇO

CAÇO	N	DIAM (mm)	QUANT	C.UNIT (cm)	C.TOTAL (cm)
CA60	1	5.0	2	209	418
CA60	2	5.0	6	395	2370
CA60	3	5.0	7	183	1281
CA60	4	5.0	7	234	1638
CA60	5	5.0	11	425	4675
CA60	6	5.0	7	253	1421
CA60	7	5.0	7	193	1351
CA60	8	5.0	28	39	754
CA60	9	5.0	9	107	963
CA60	10	5.0	10	105	1050
CA60	11	5.0	14	21	294
CA60	12	5.0	30	165	1050
CA60	13	5.0	8	65	520
CA60	14	5.0	6	154	616
CA60	15	5.0	7	85	595
CA60	16	5.0	6	154	616
CA60	17	6.3	5	166	830
CA60	18	6.3	4	154	616
CA60	19	8.0	4	169	676
CA60	20	8.0	4	154	616
CA60	21	10.0	8	157	1256
CA60	22	10.0	12	242	2904
CA60	23	10.0	6	207	1242
CA60	24	12.5	8	208	1664
CA60	25	12.5	18	210	3780
CA60	26	16.0	4	230	920

RESUMO DO AÇO

AÇO	DIAM (mm)	C.TOTAL (m)	PESO + 10% (kg)
CA50	6.3	8.3	2.2
CA50	8.0	12.9	5.8
CA50	10.0	72.2	49
CA50	12.5	54.3	57.5
CA50	16.0	9.2	16
CA50	5.0	181.4	38.8

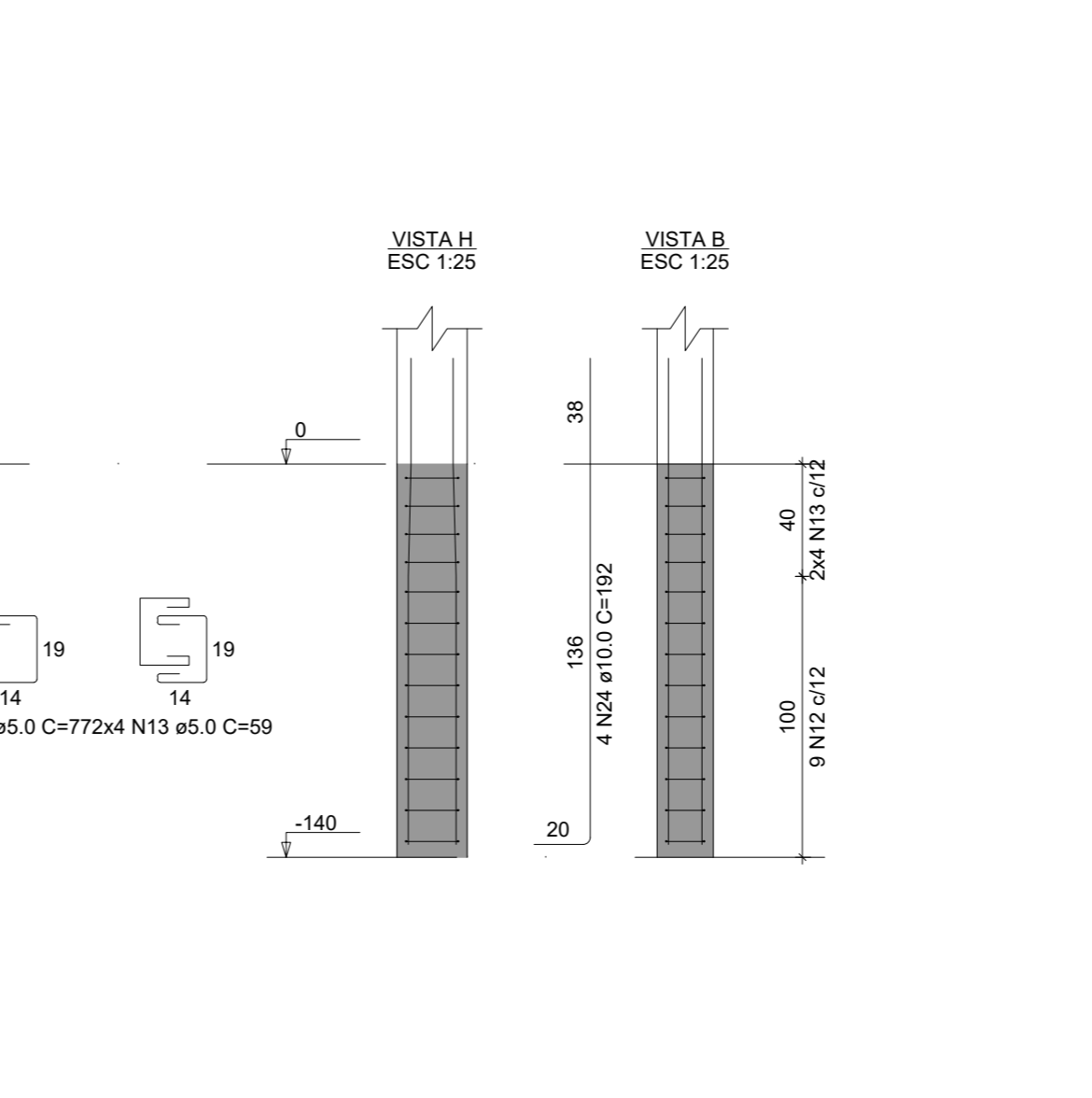
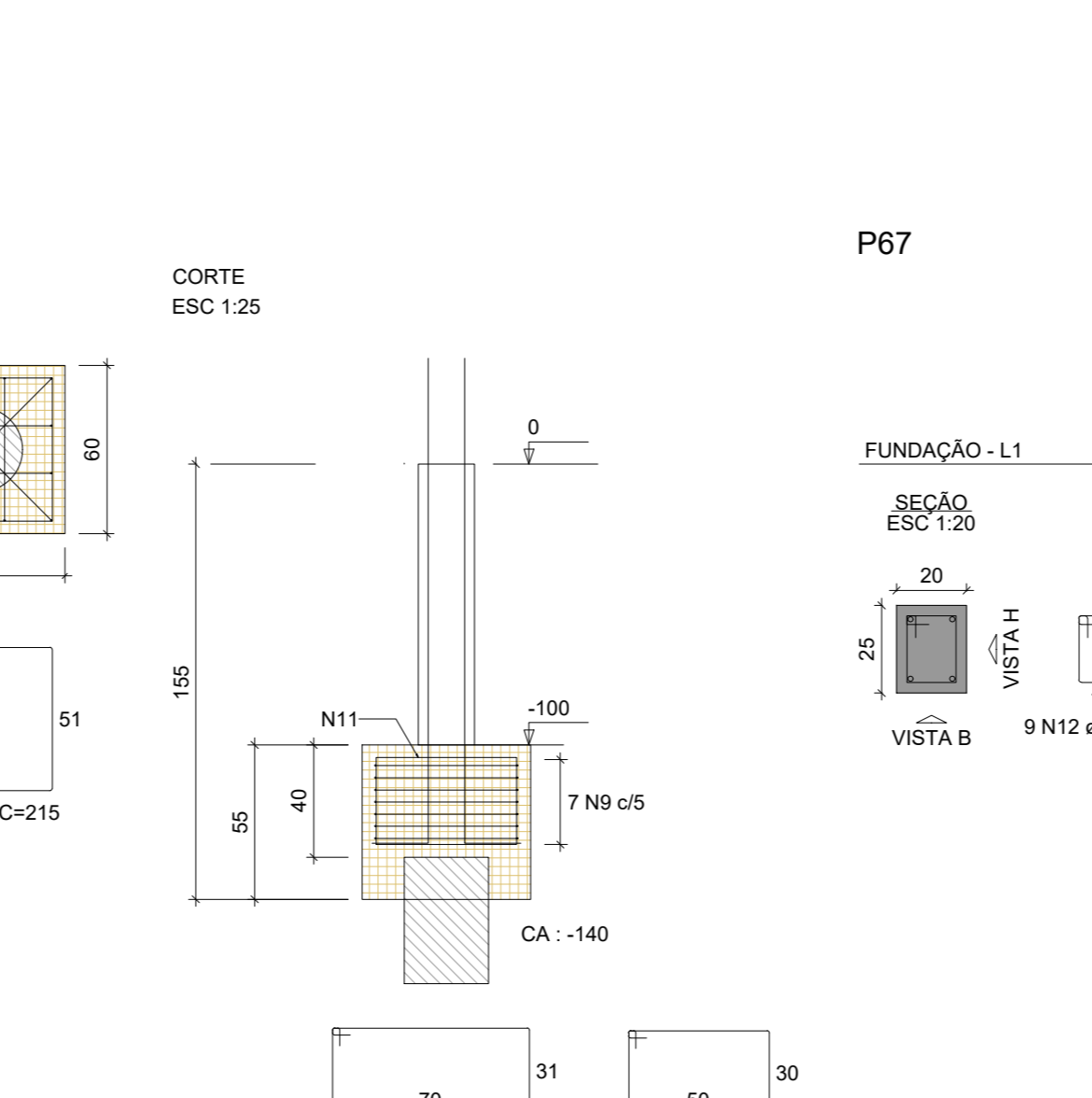
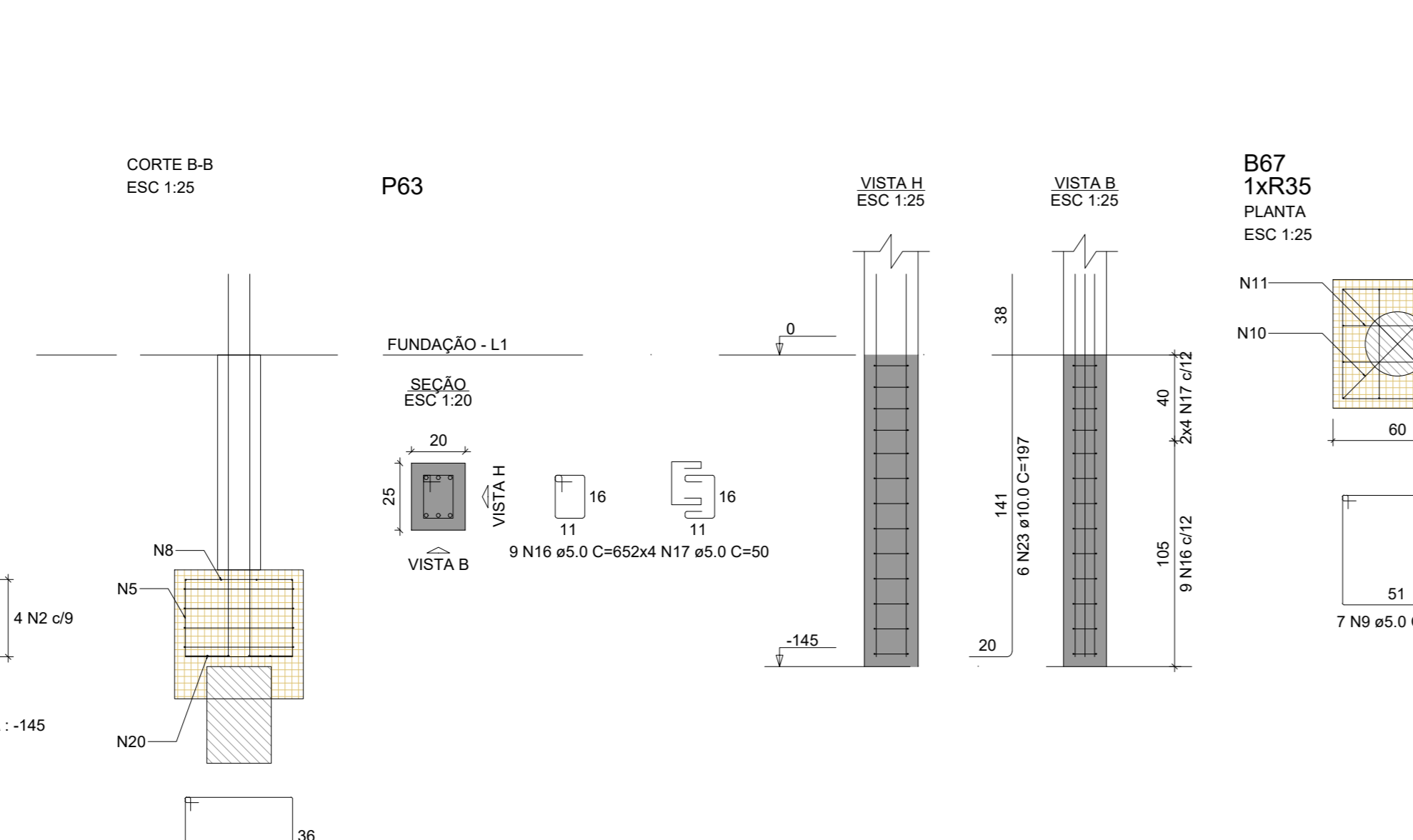
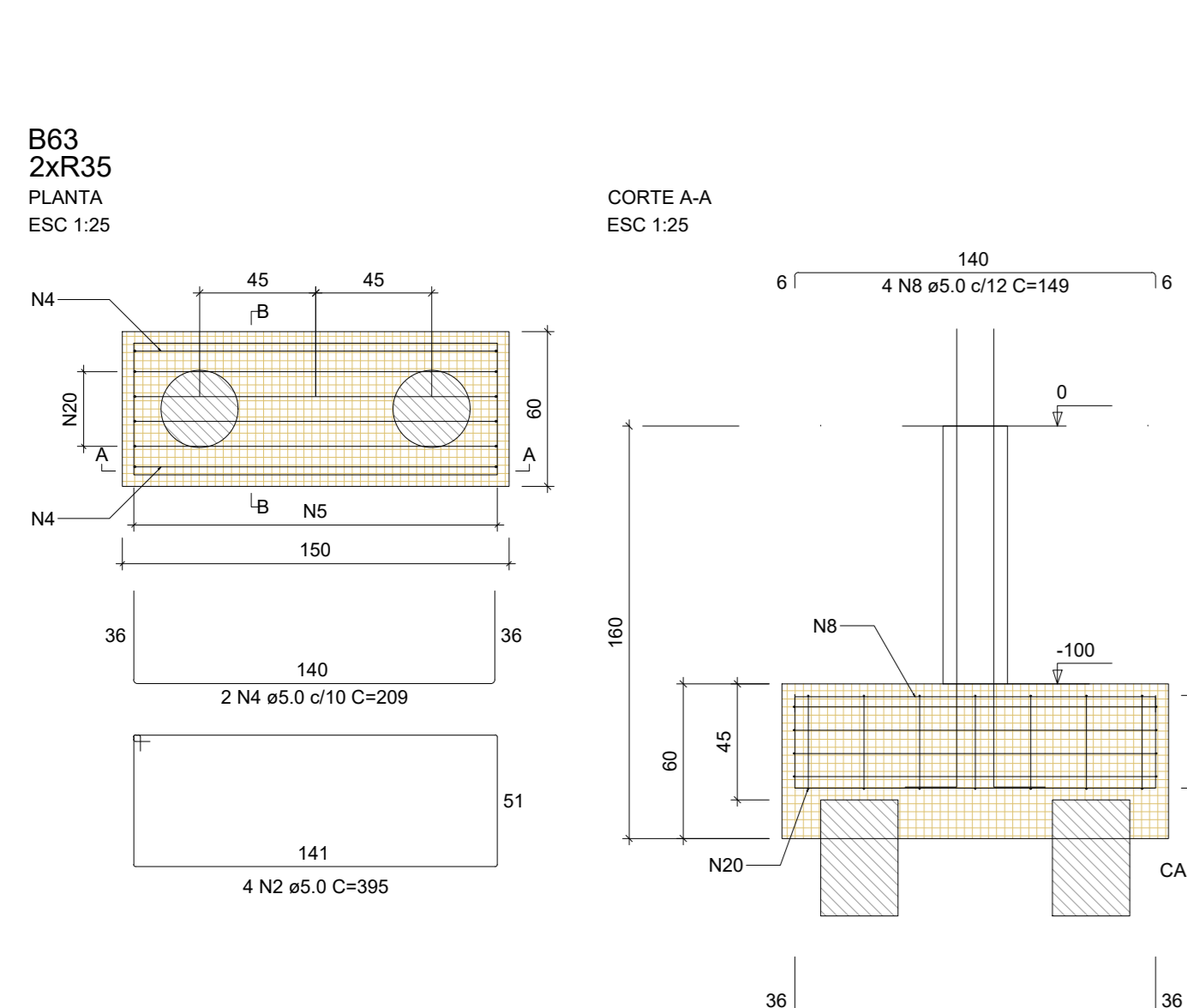
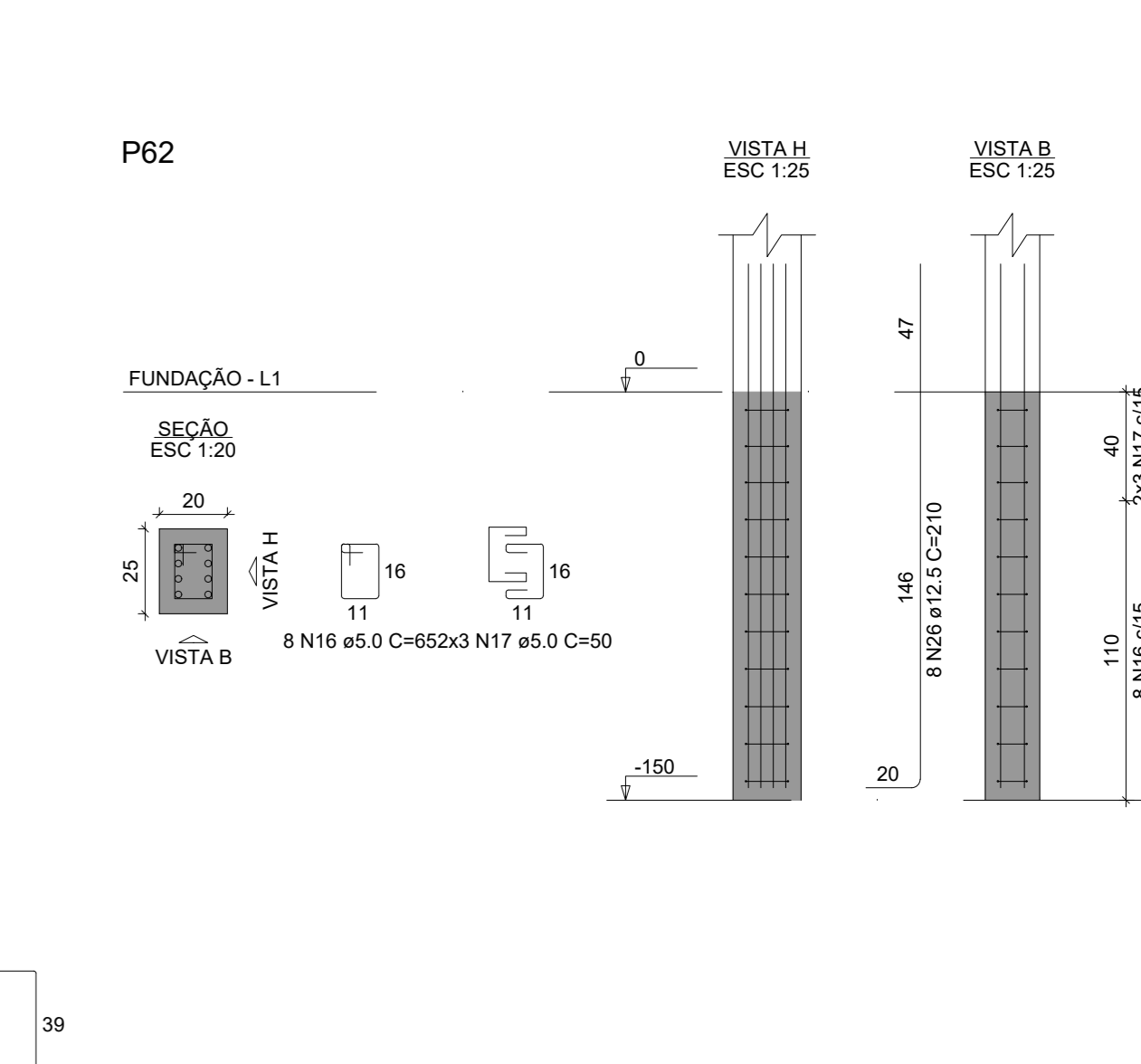
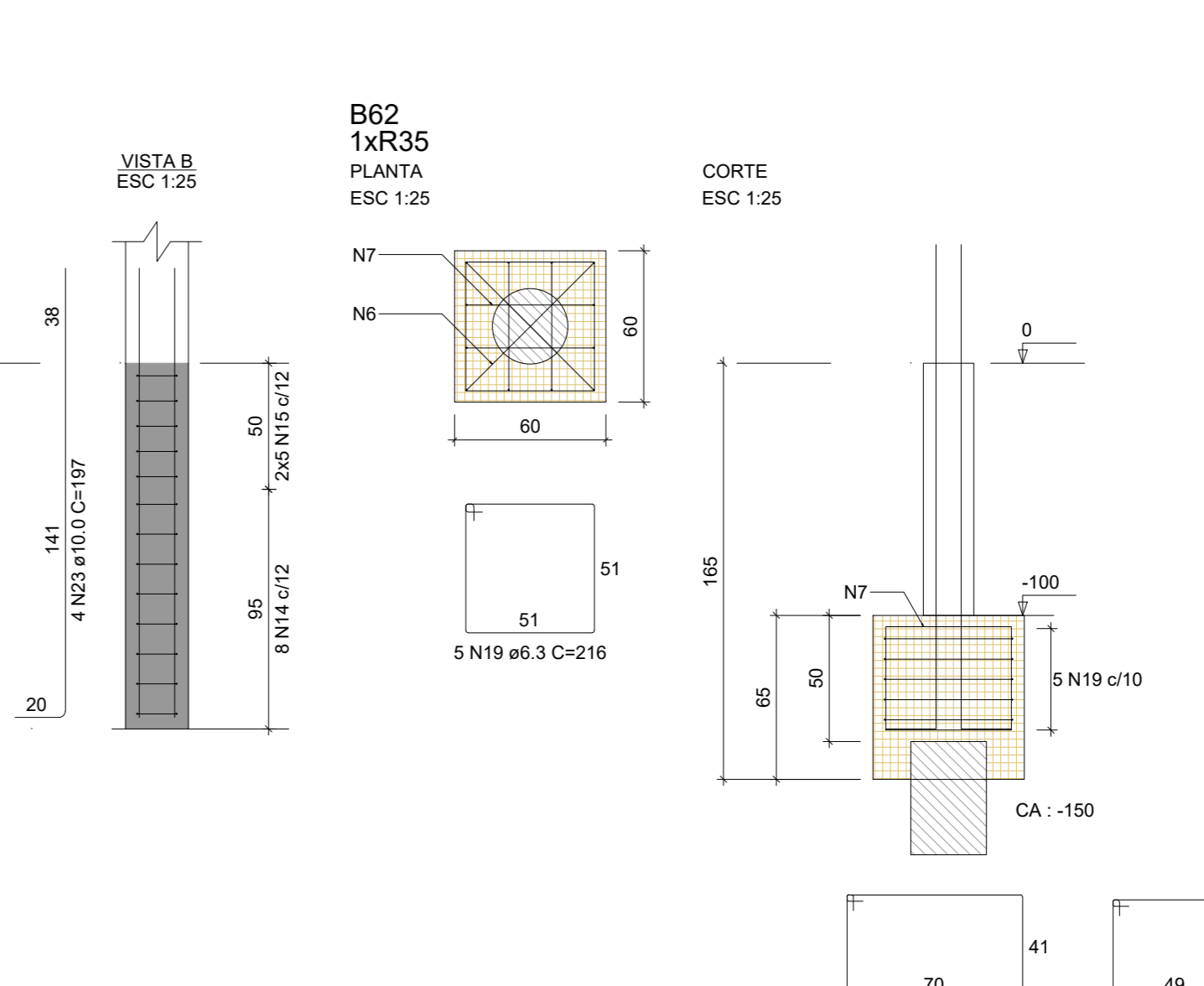
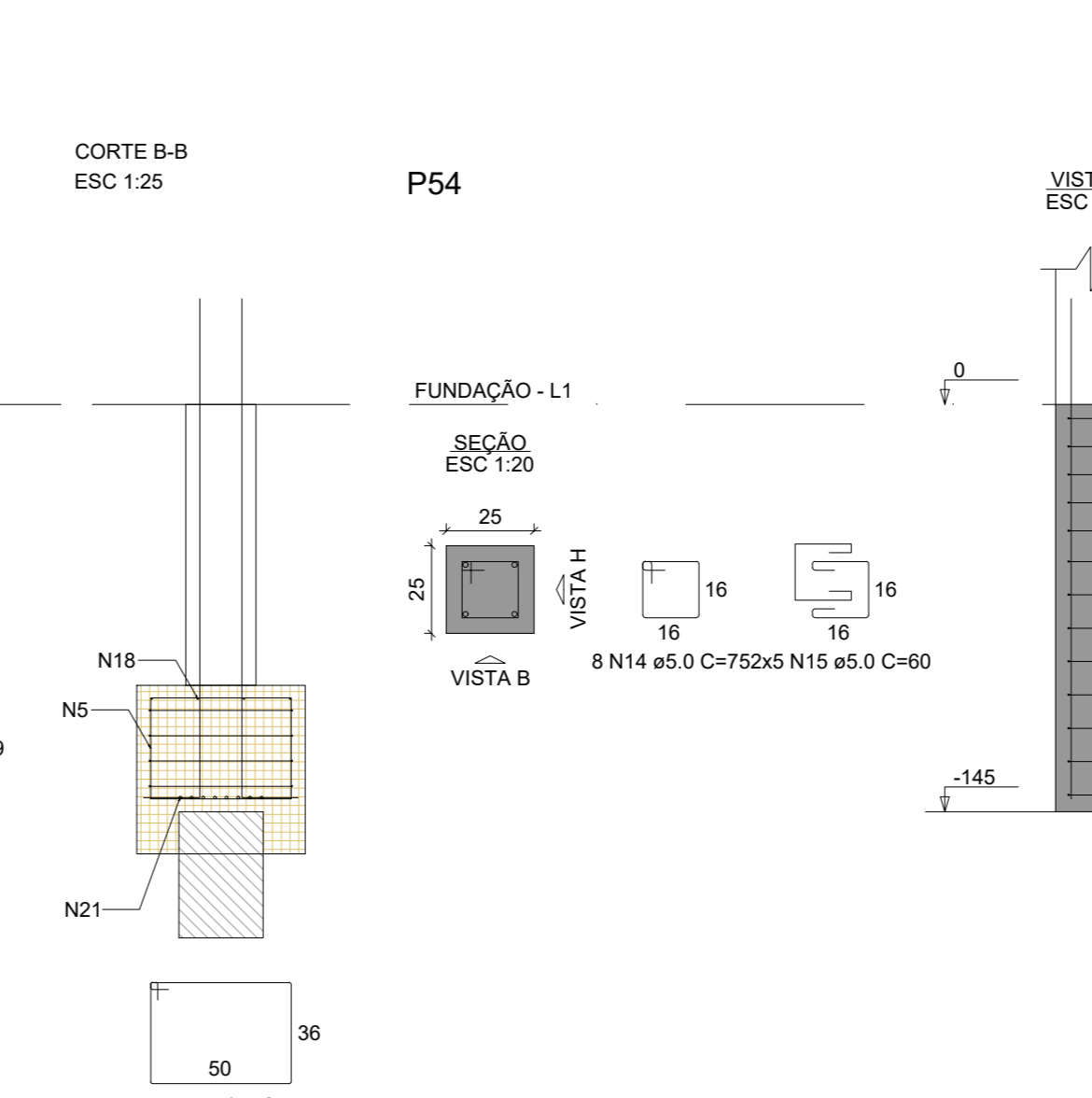
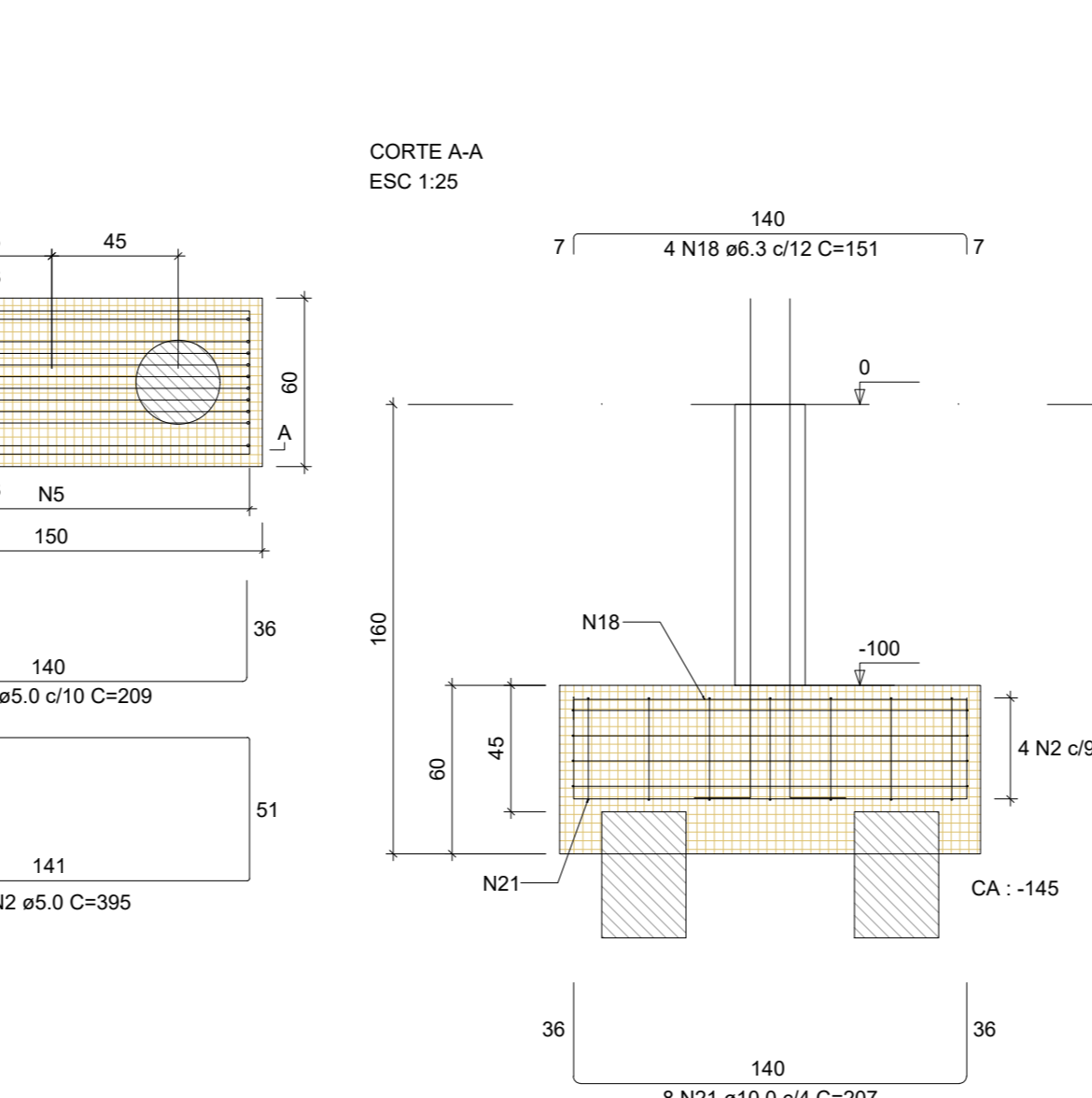
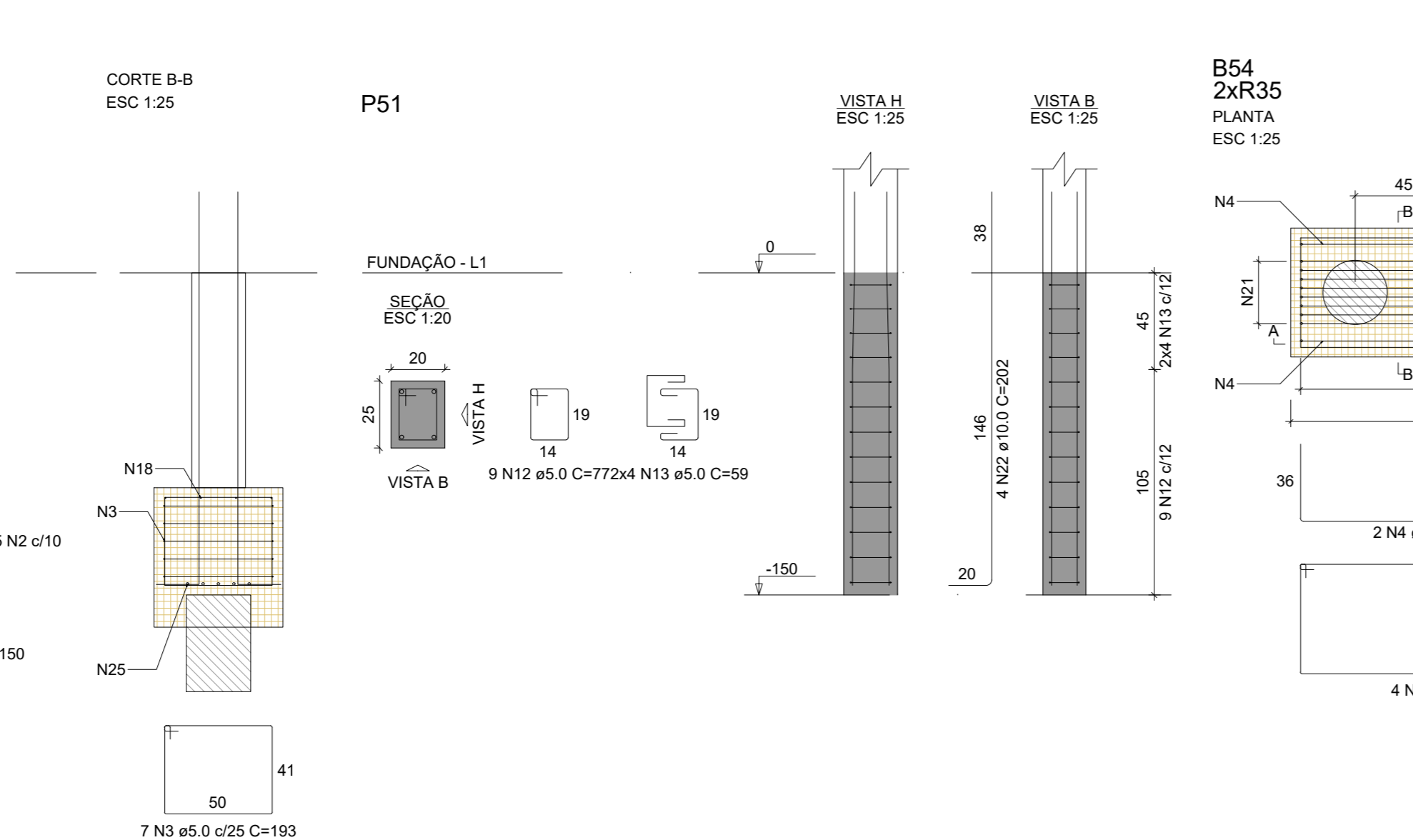
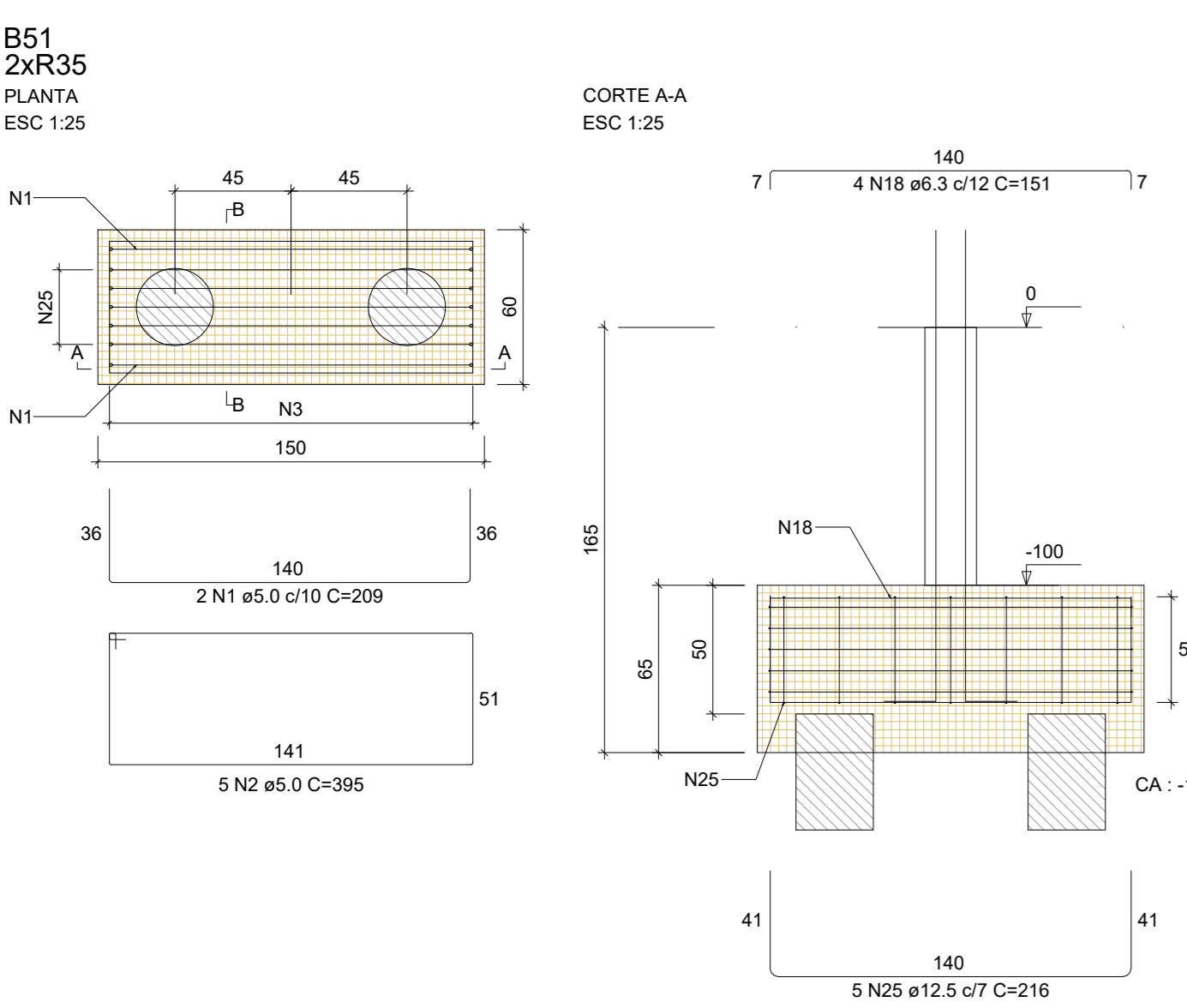
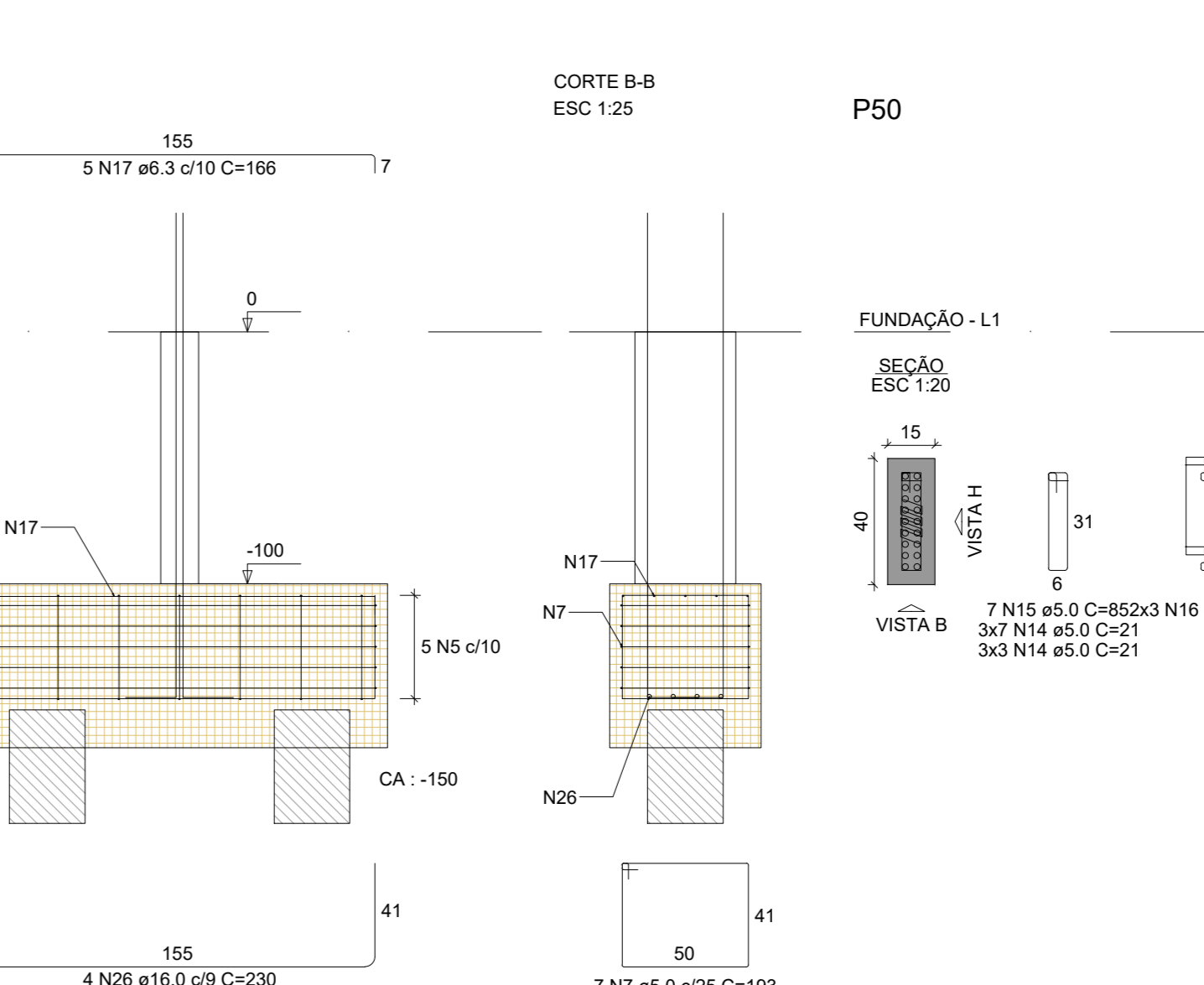
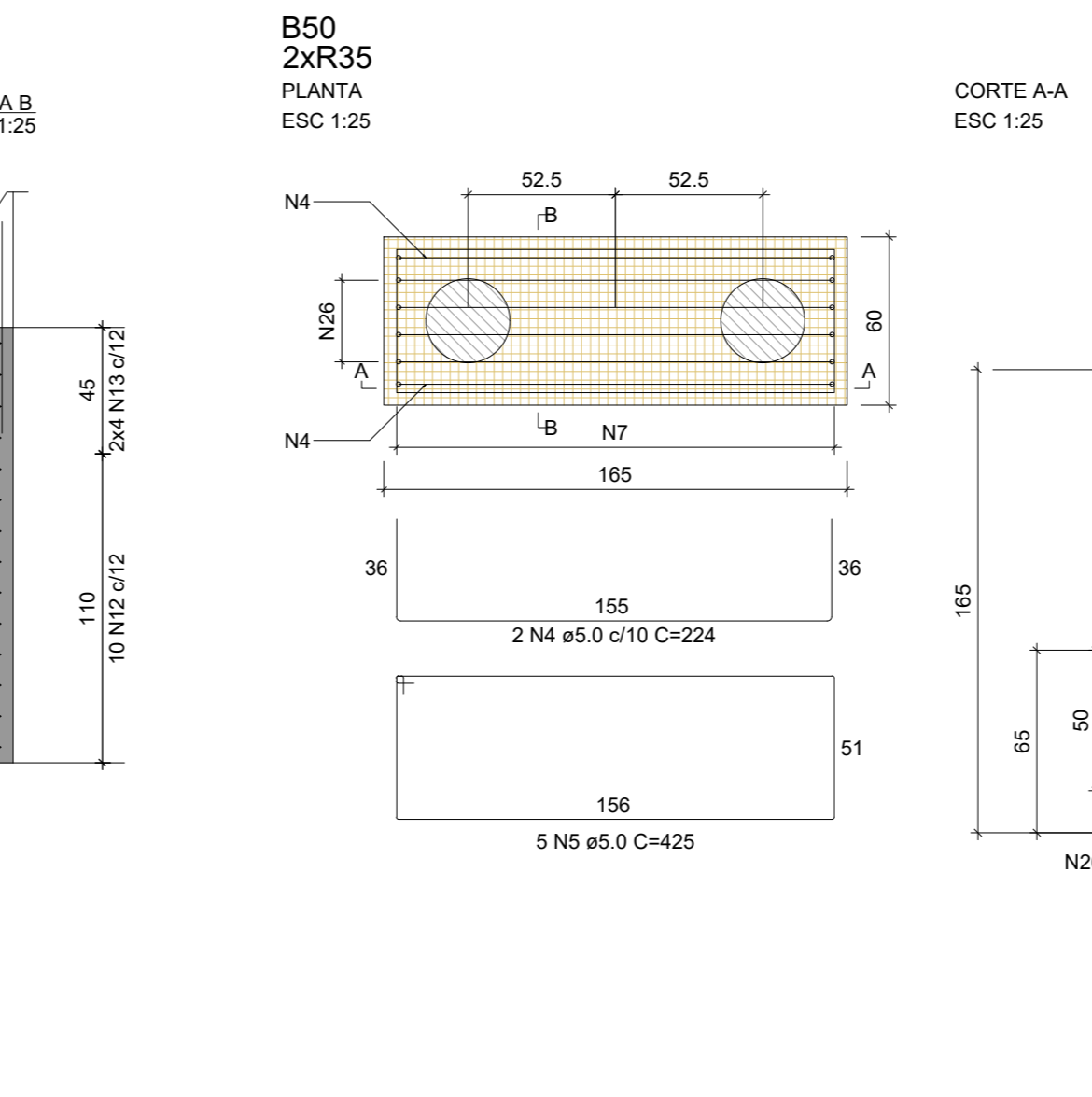
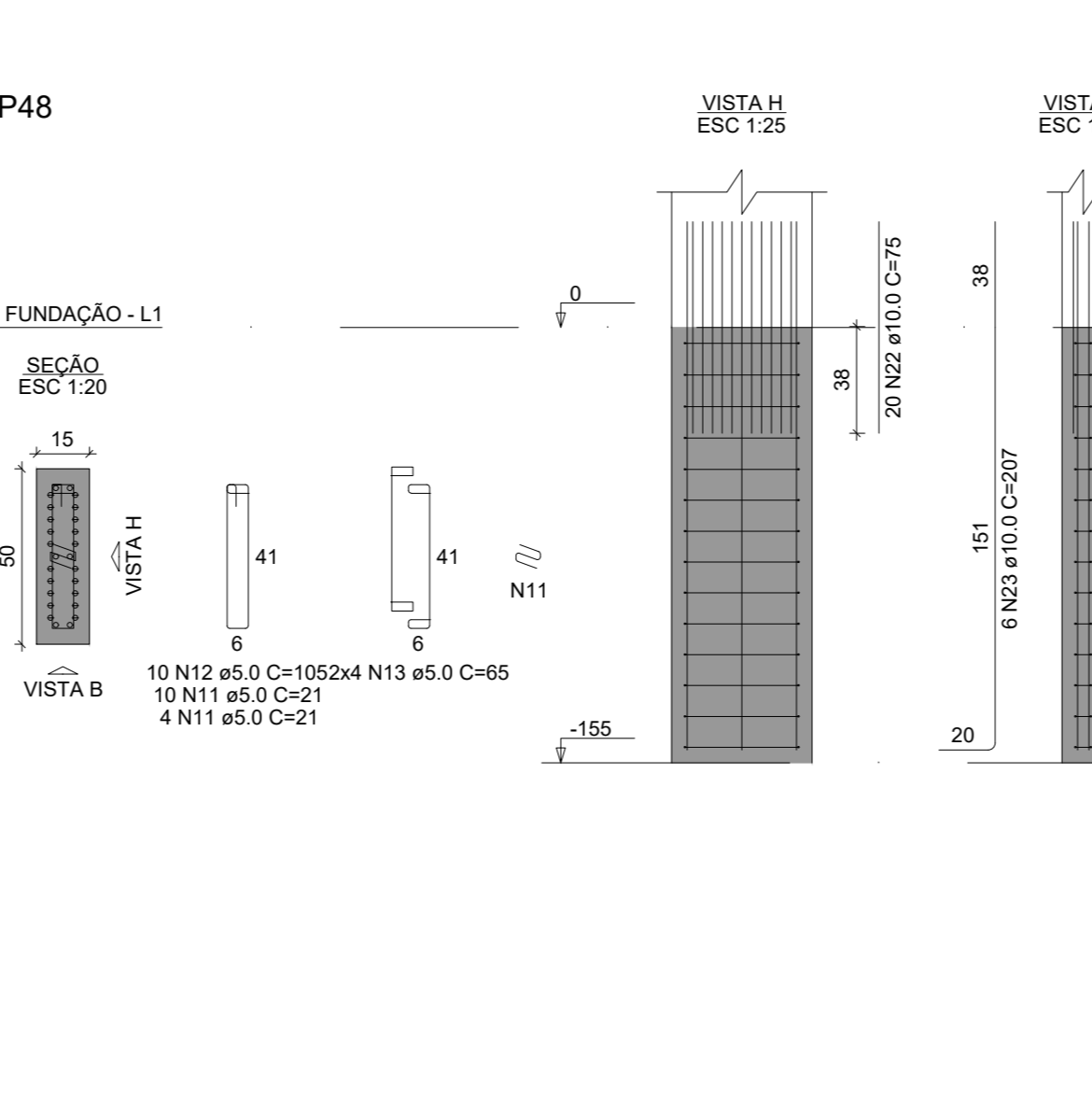
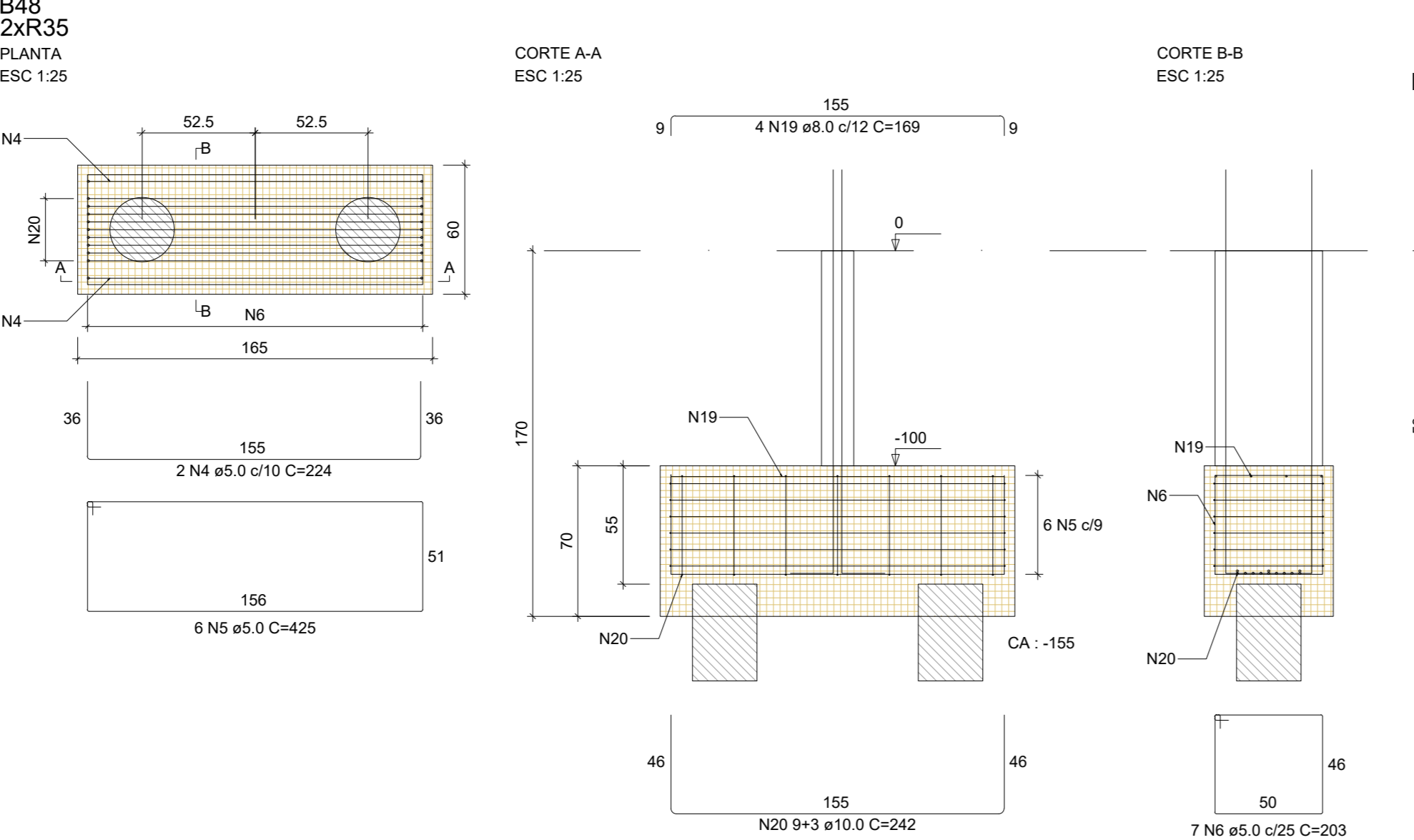
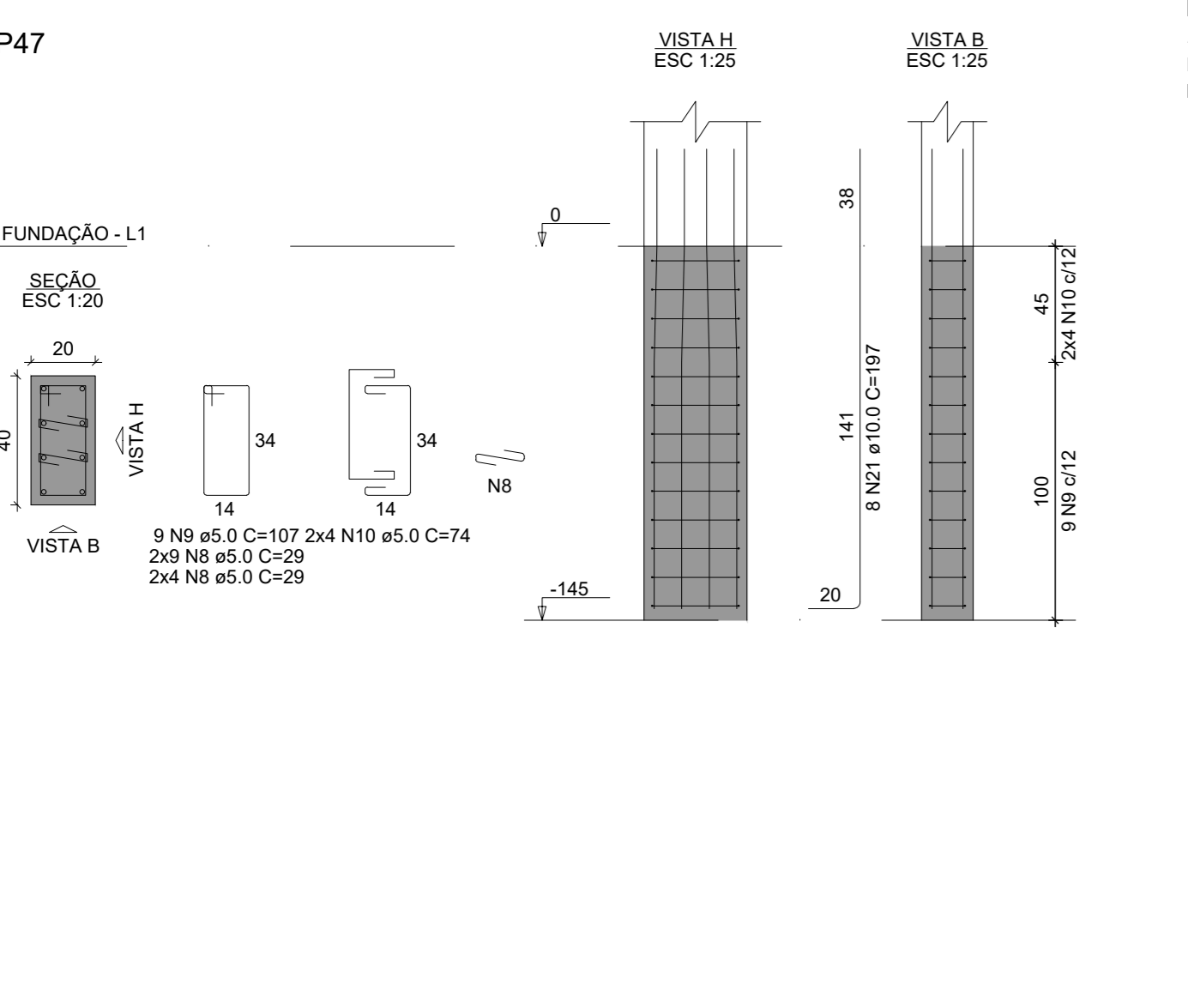
PESO TOTAL (kg) 130.3

CA50 130.3

CA60 30.8

Volume de concreto (C-25) = 2.03 m³

Área de forma = 12.20 m²



RELAÇÃO DO AÇO

CAÇO	N	DIAM (mm)	QUANT	C.UNIT (cm)	C.TOTAL (cm)
CA60	1	5.0	2	209	418
CA60	2	5.0	13	395	5135
CA60	3	5.0	7	193	1351
CA60	4	5.0	4	209	836
CA60	5	5.0	14	193	2702
CA60	6	5.0	2	233	466
CA60	7	5.0	4	197	788
CA60	8	5.0	4	149	596
CA60	9	5.0	7	215	1505
CA60	10	5.0	2	213	426
CA60	11	5.0	16	59	944
CA60	12	5.0	18	77	1386
CA60	13	5.0	16	99	844
CA60	14	5.0	8	75	600
CA60	15	5.0	14	65	600
CA60	16	5.0	17	65	1105
CA60	17	5.0	14	50	700
CA60	18	6.3	8	151	1208
CA60	19	6.3	5	216	1080
CA60	20	10.0	4	208	832
CA60	21	10.0	4	207	1656
CA60	22	10.0	10	202	808
CA60	23	10.0	10	197	1970
CA60	24	12.5	8	192	768
CA60	25	12.5	8	216	1080
CA60	26	12.5	8	210	1680

RESUMO DO AÇO

AÇO	DIAM (mm)	C.TOTAL (m)	PESO + 10% (kg)
CA50	6.3	22.9	6.2
CA50	8.0	52	3.8
CA50	10.0	32	36.3
CA50	12.5	207.6	29.2
CA50	5.0	207.6	34

PESO TOTAL (kg) 74.3

CA50 74.3

CA60 34

Volume de concreto (C-25) = 2.27 m³

Área de forma = 15.25 m²

**PREFECTURA MUNICIPAL DE FORMIGA**  
C.N.P.J. 16.787.720/0001-25  
Secretaria de Obras e Trânsito  
Rua Barão de Piumhi, nº 13  
Centro - Formiga (MG) - Cep. 35570-000

Título: **PROJETO ESTRUTURAL**

Finalidade: **SEDE SECRETARIAS DE OBRAS E TRÂNSITO E REGULAÇÃO URBANA**

Detalhes: **ARMAÇÃO, PILARES E VIGA LAJE INCLINADA**

Endereço Obra/Serviço: **RUA CORONEL JOSÉ GONÇALVES D'AMARANTE, 83, CENTRO**

Coordenadas:

EUGÊNIO VILELA JUNIOR  
PREFEITO MUNICIPAL DE FORMIGA

LORENA DE PAIVA ARANTES  
ENGENHEIRA CIVIL - CREA: 234.399/D

Escala: INDICADA    Desenho: LORENA A.    Data: SET./2022    Prancha: 08/28