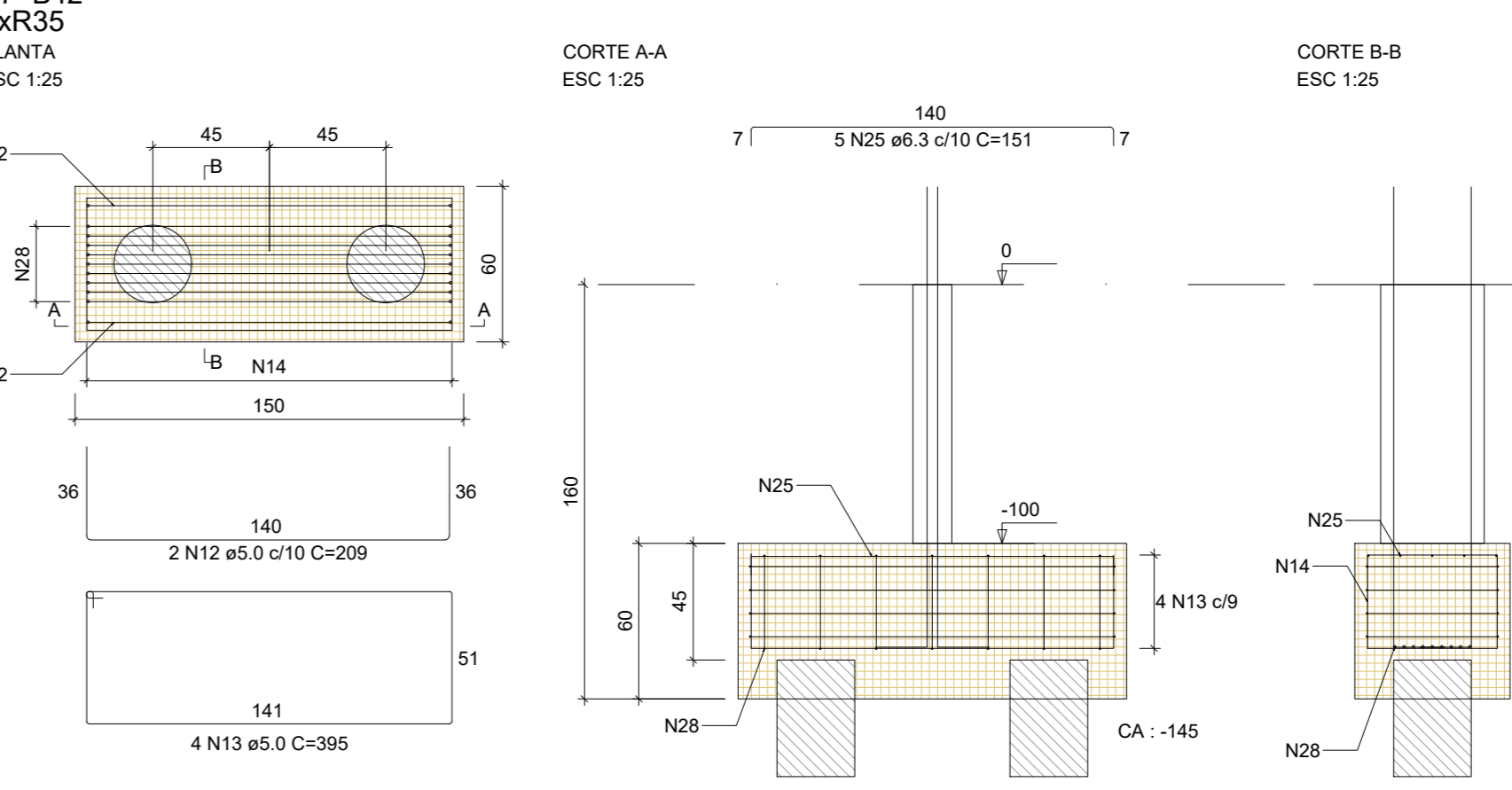
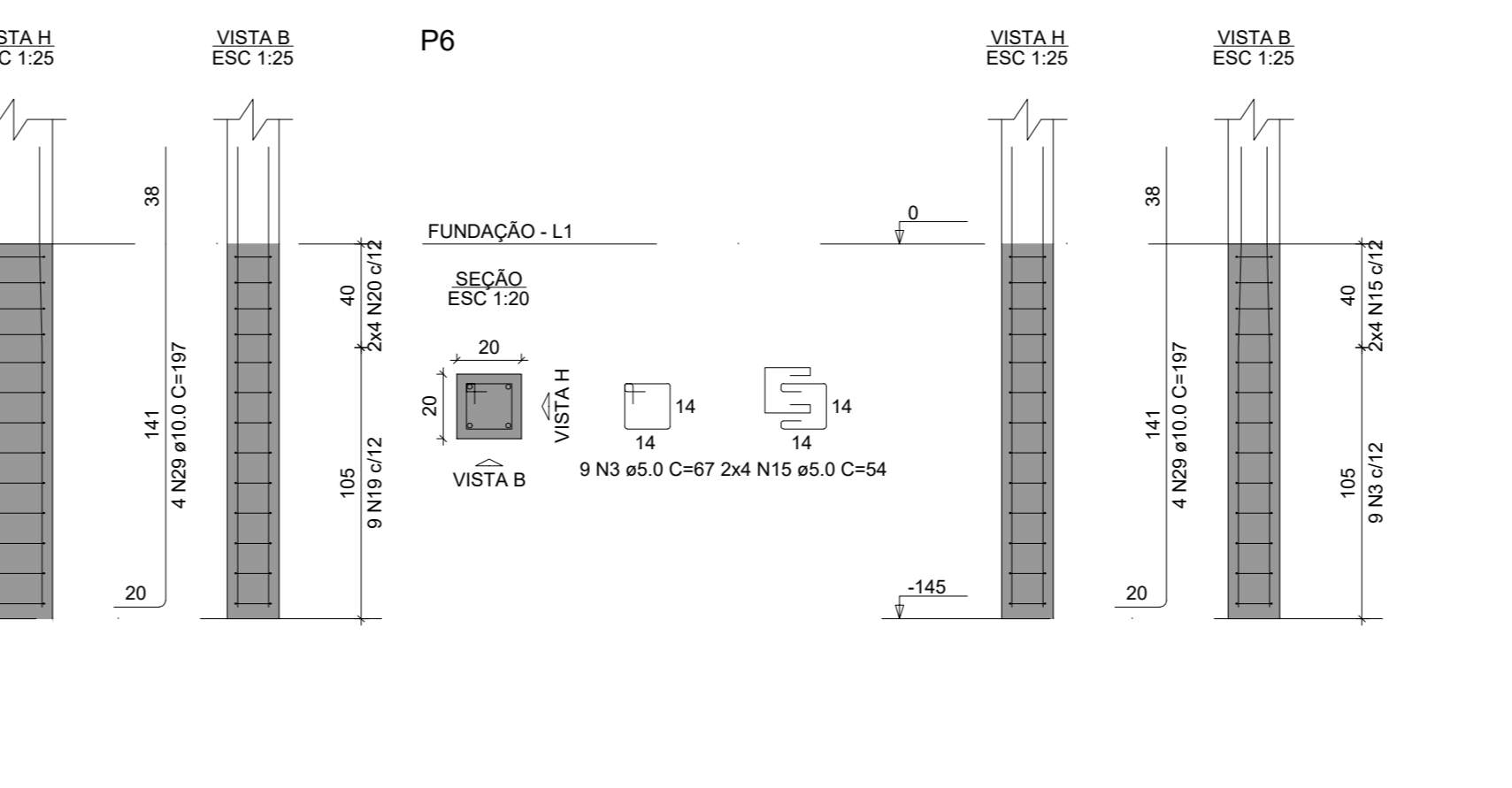
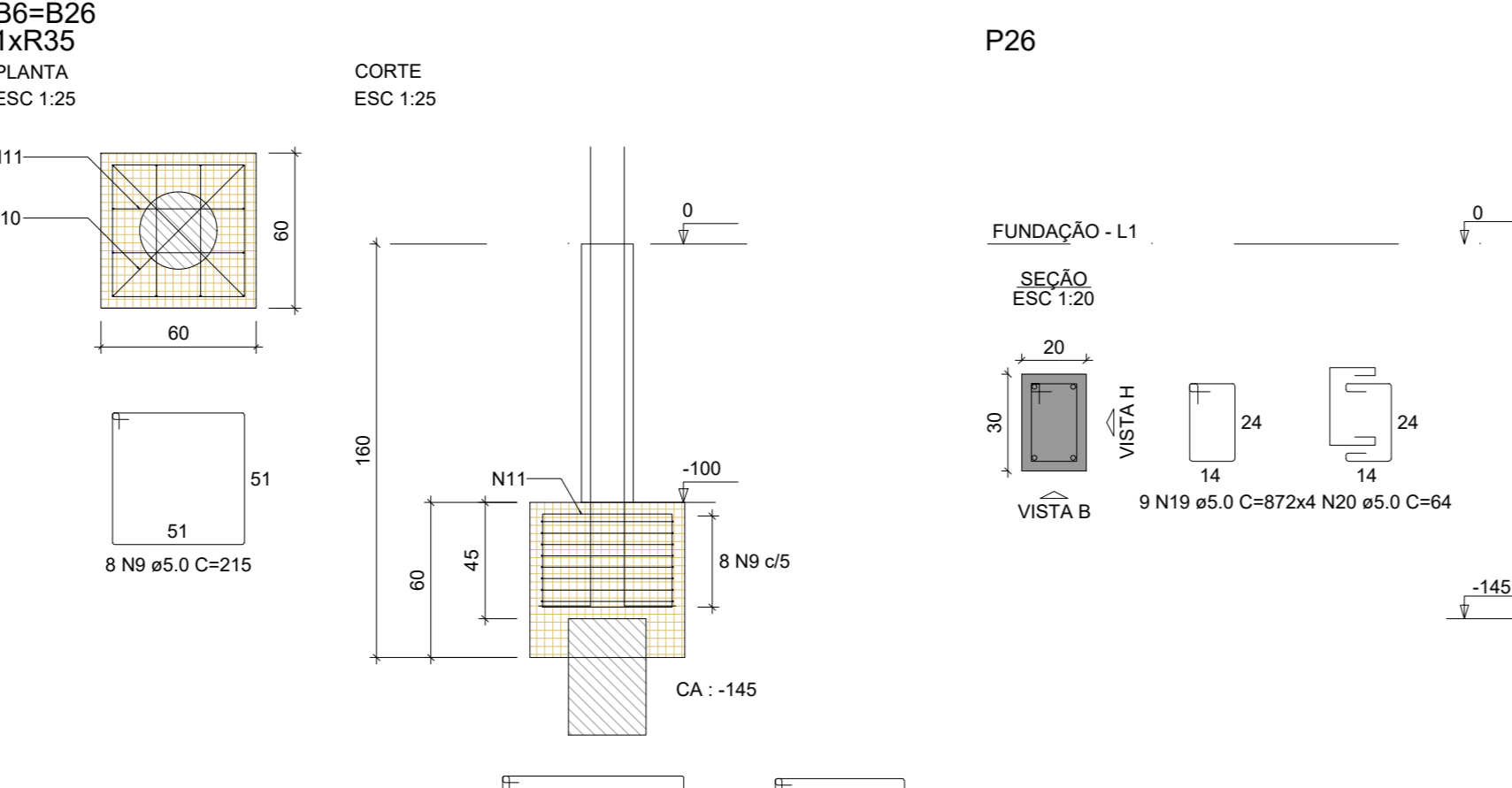
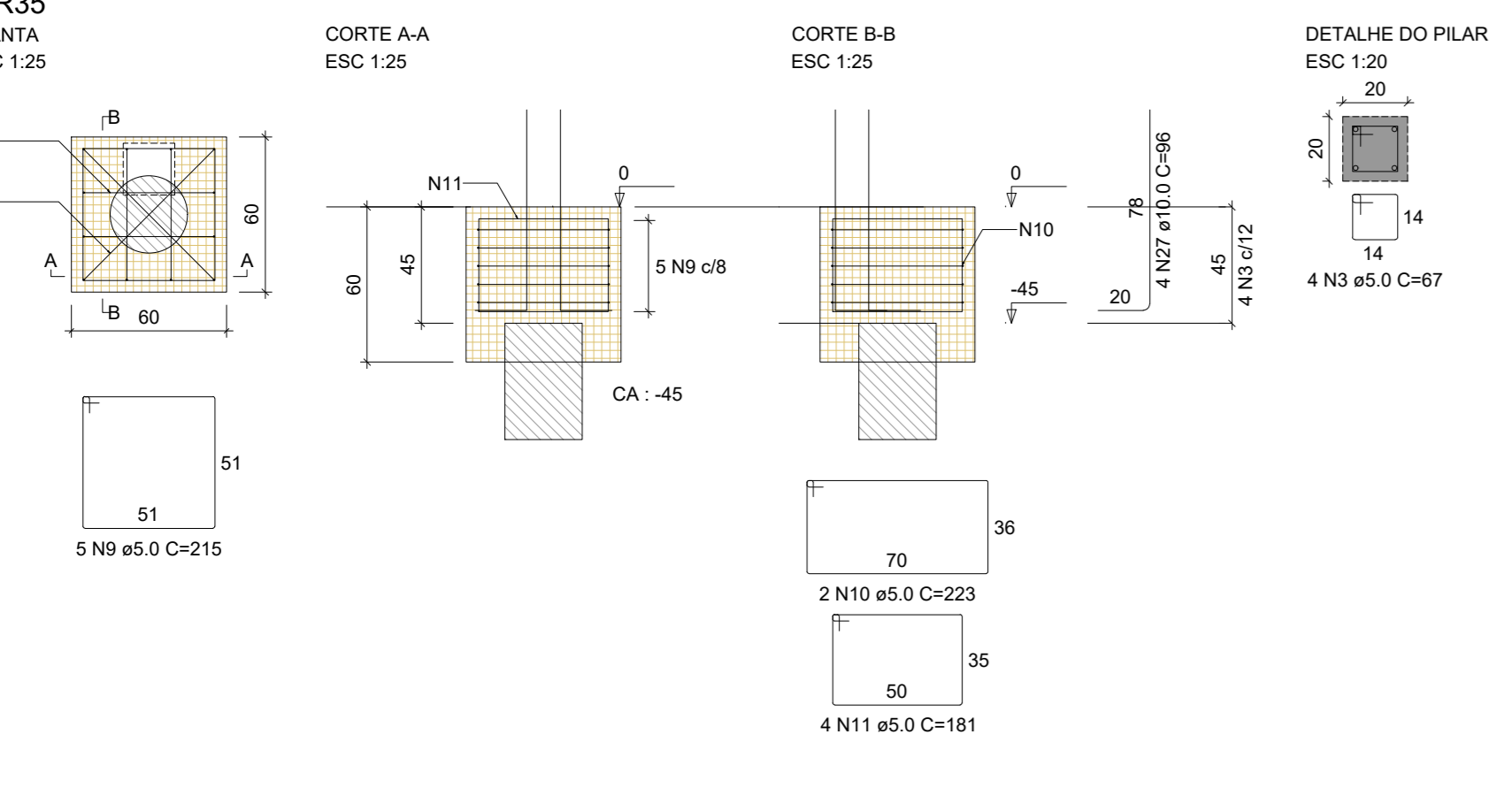


RELAÇÃO DO AÇO

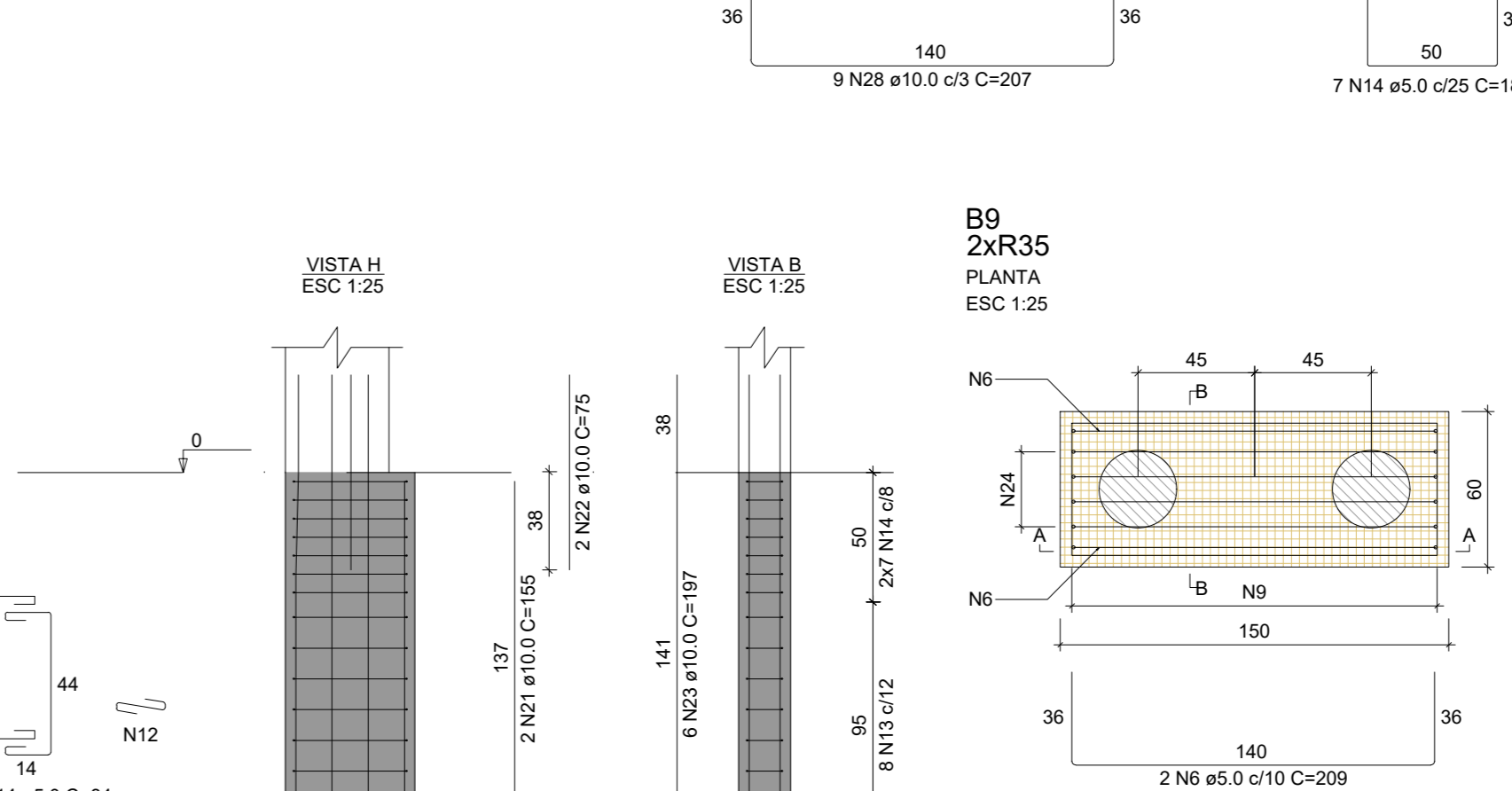
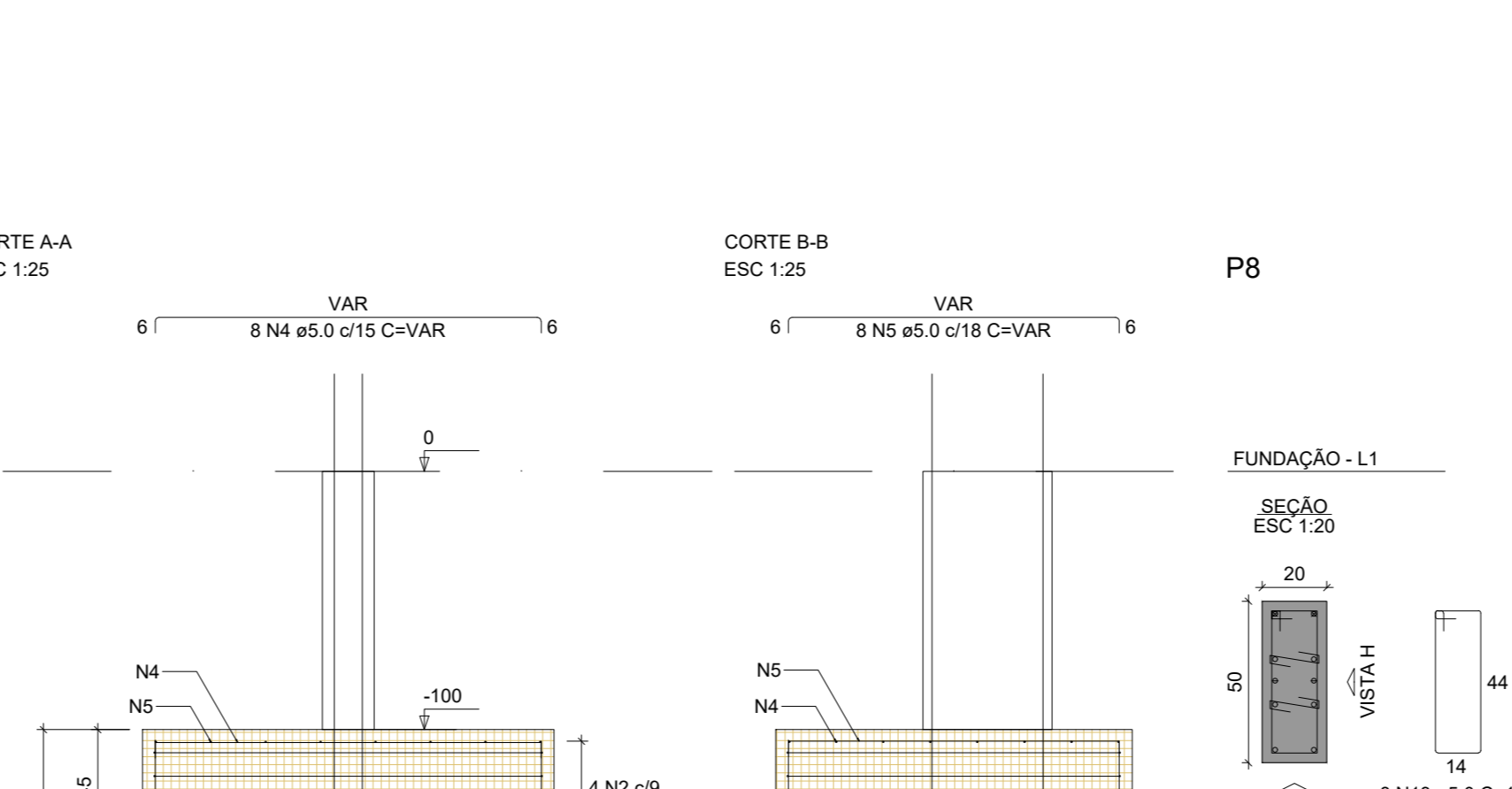
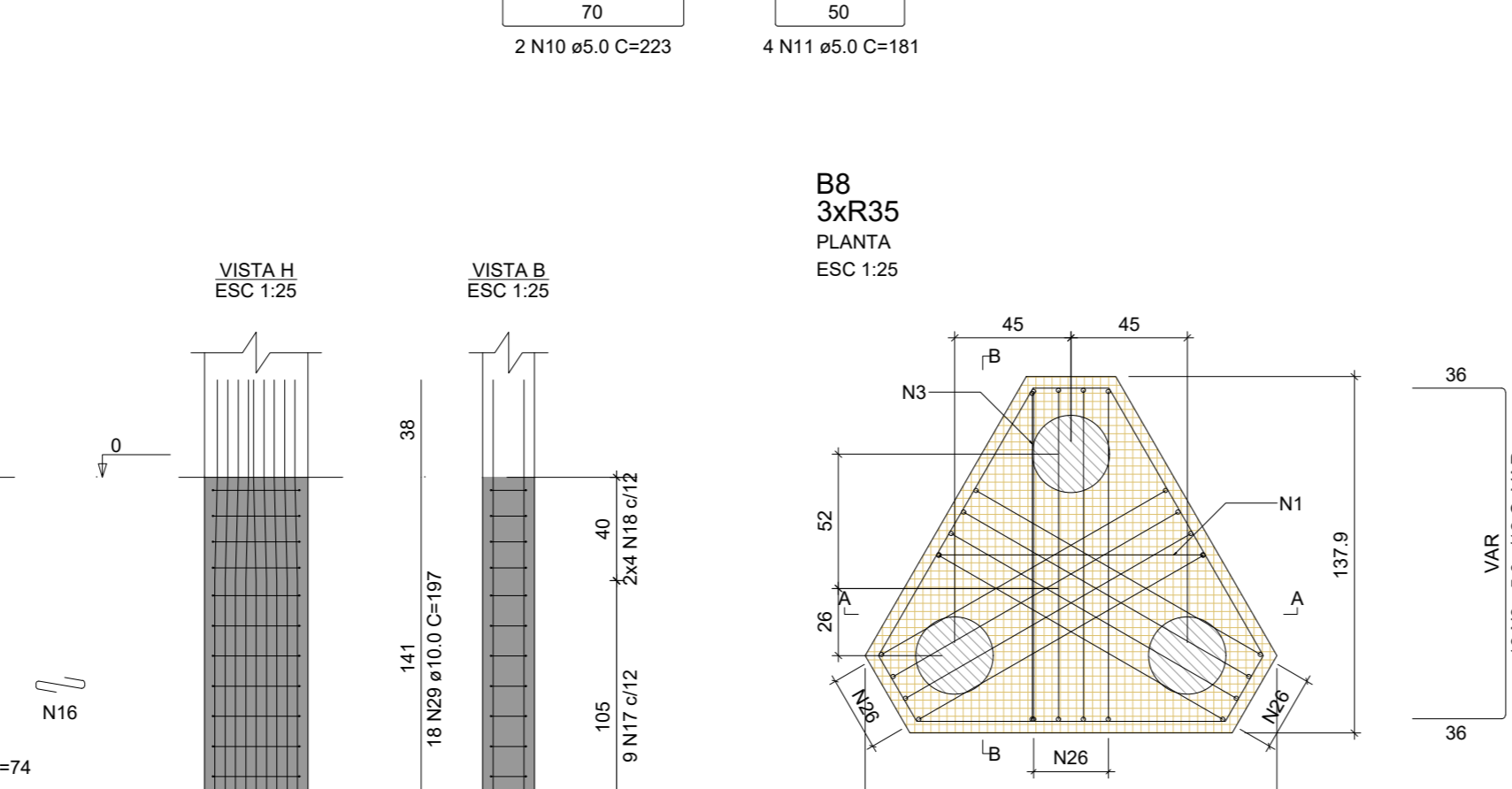
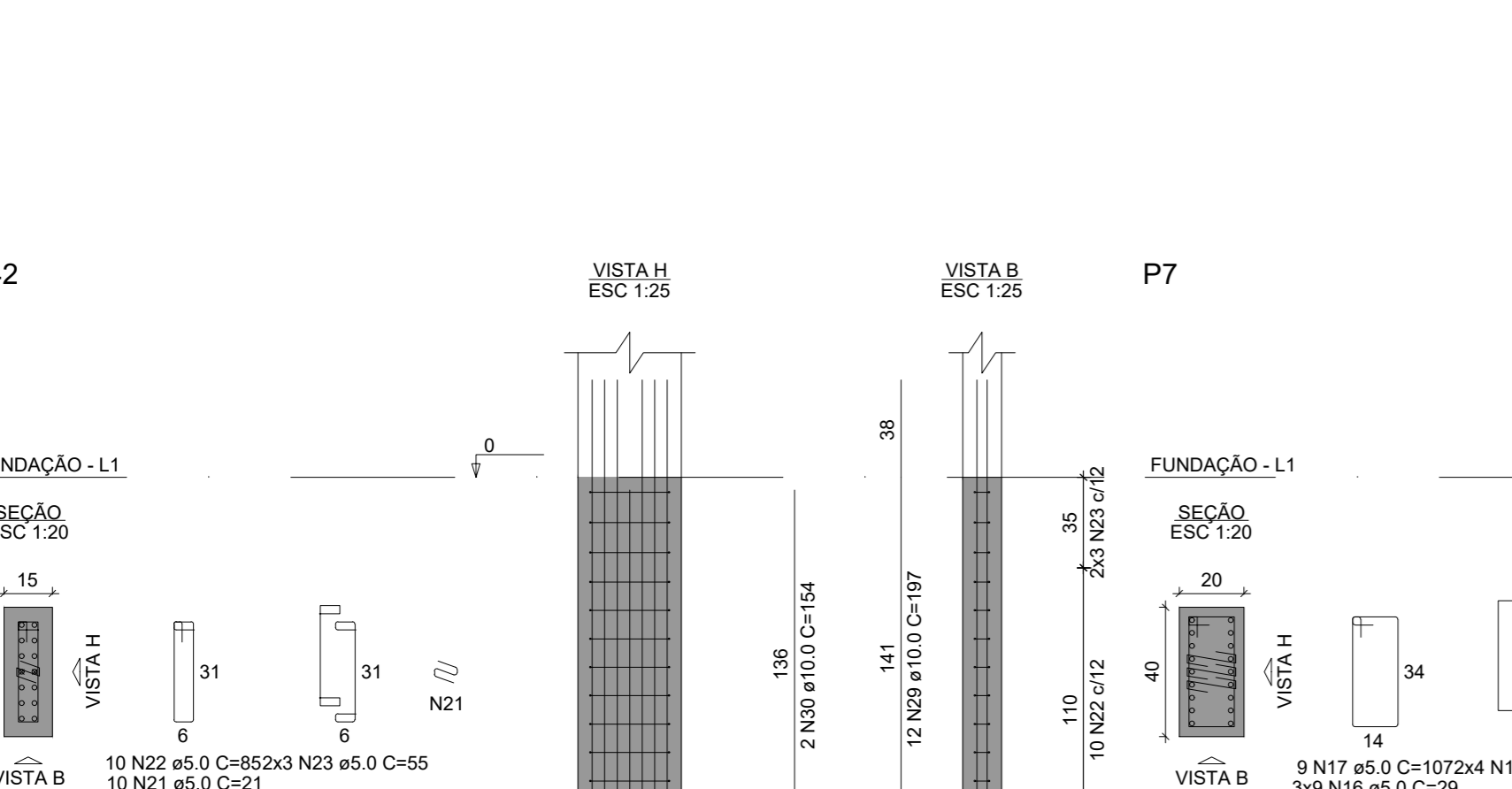
CAÇO	N	DIAM (mm)	QUANT	C.LIMIT (cm)	C.TOTAL (cm)
1	1	5.0	4	223	892
2	2	5.0	16	177	2832
3	3	5.0	17	207	3519
4	4	5.0	4	24	288
5	5	5.0	12	24	288
6	6	5.0	4	17	208
7	7	5.0	4	17	208
8	8	5.0	4	17	208
9	9	5.0	4	17	208
10	10	5.0	4	17	208
11	11	5.0	12	181	2172
12	12	5.0	4	209	836
13	13	5.0	8	396	3168
14	14	5.0	14	183	2562
15	15	5.0	8	54	432
16	16	5.0	39	29	1131
17	17	5.0	8	187	783
18	18	5.0	8	74	582
19	19	5.0	8	107	852
20	20	5.0	8	64	512
21	21	5.0	10	85	850
22	22	5.0	10	85	850
23	23	5.0	10	85	850
24	24	6.3	11	216	2376
25	25	6.3	10	151	1510
26	26	10.0	28	96	2688
27	27	10.0	18	207	3708
28	28	10.0	38	197	7486
29	29	10.0	2	154	308
30	30	10.0	2	154	308



RESUMO DO AÇO

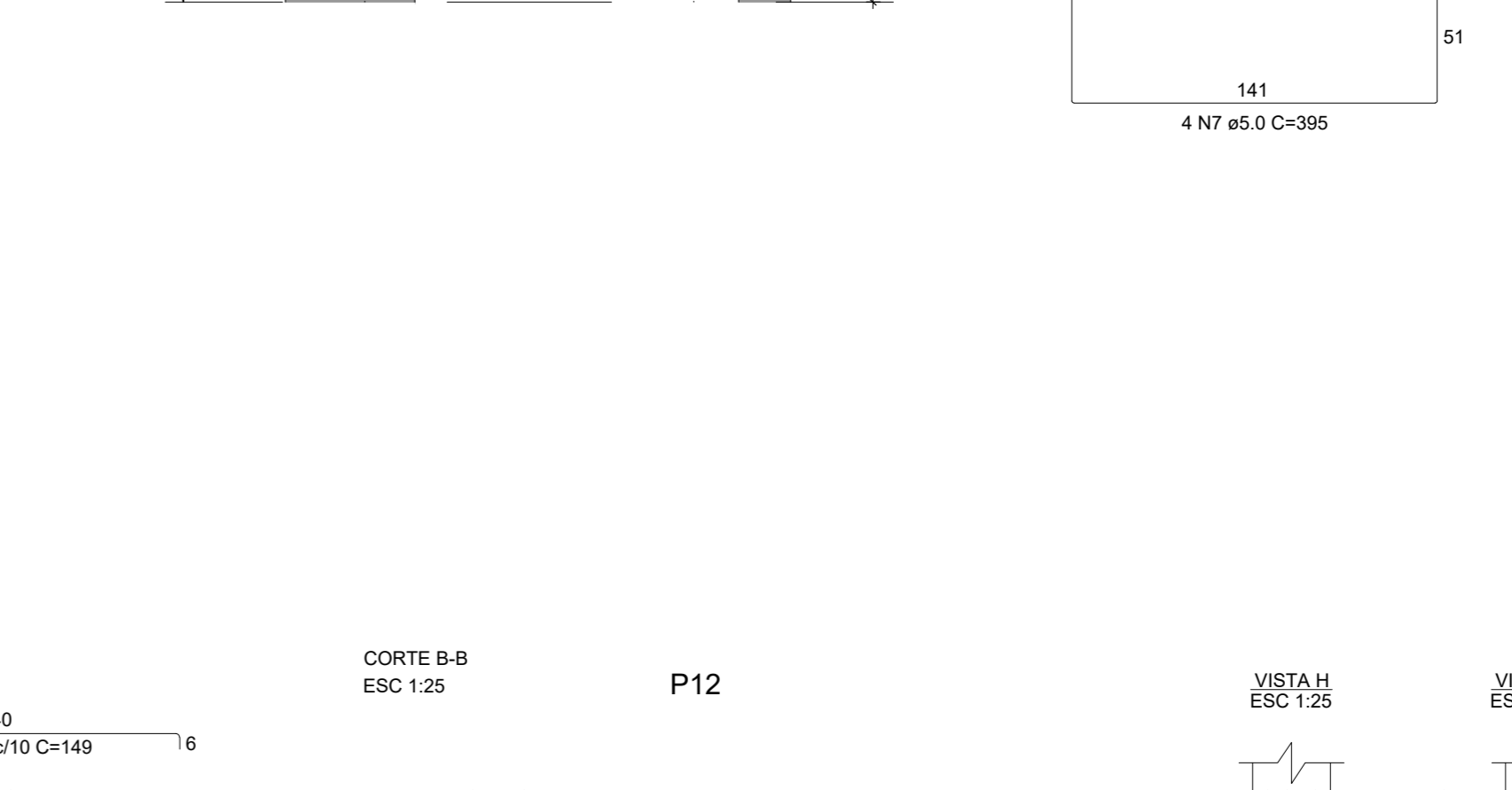
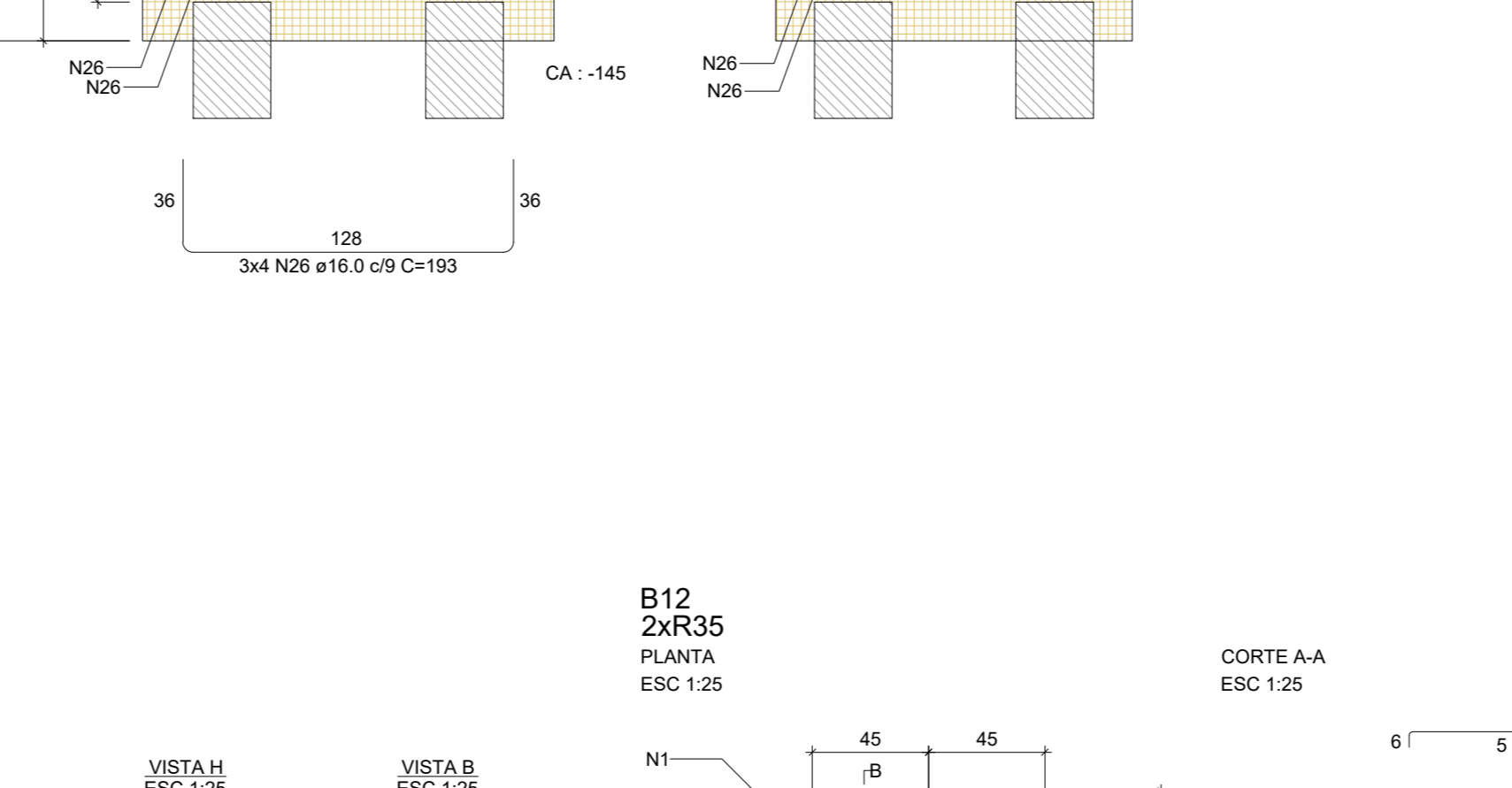
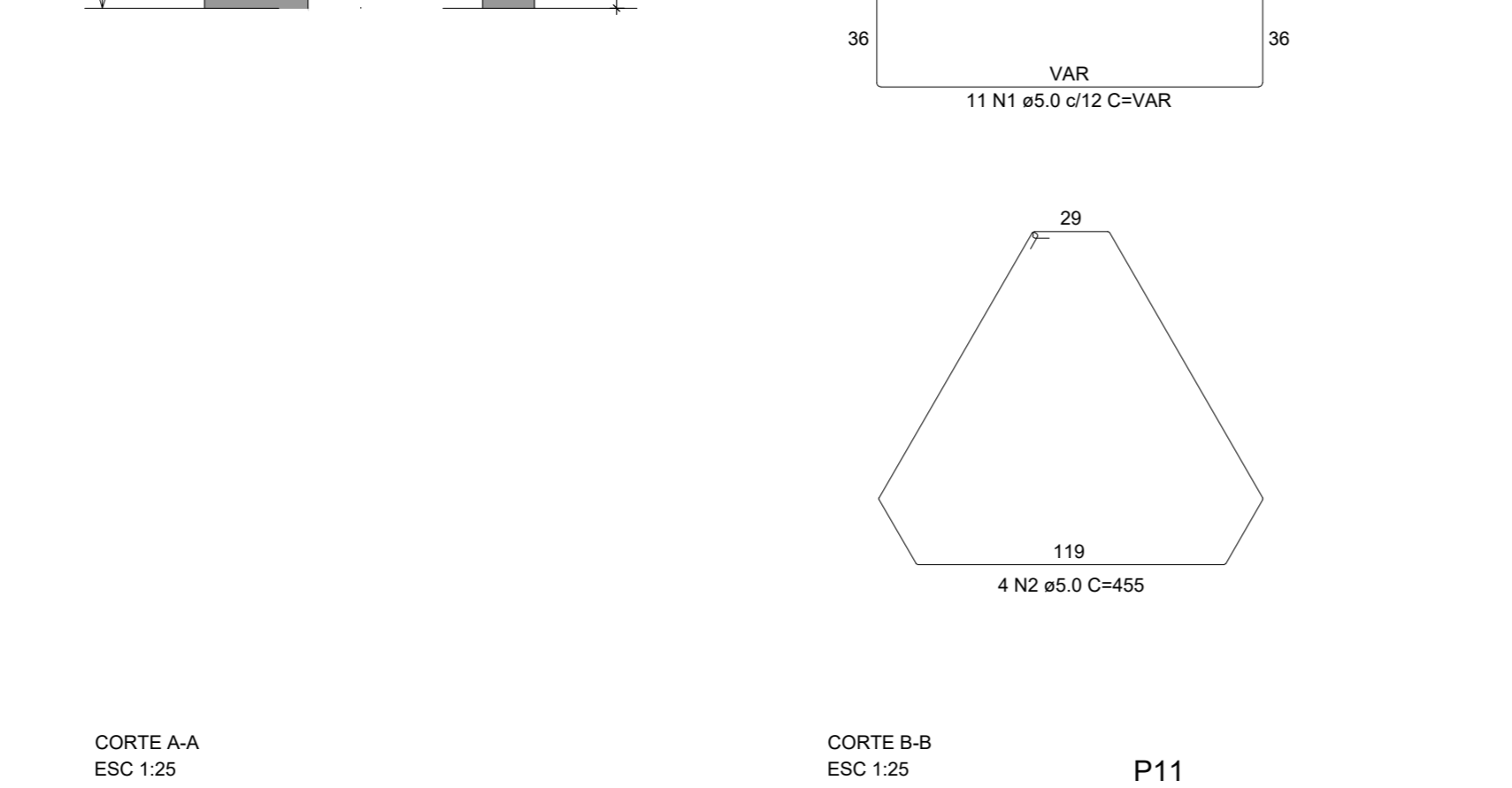
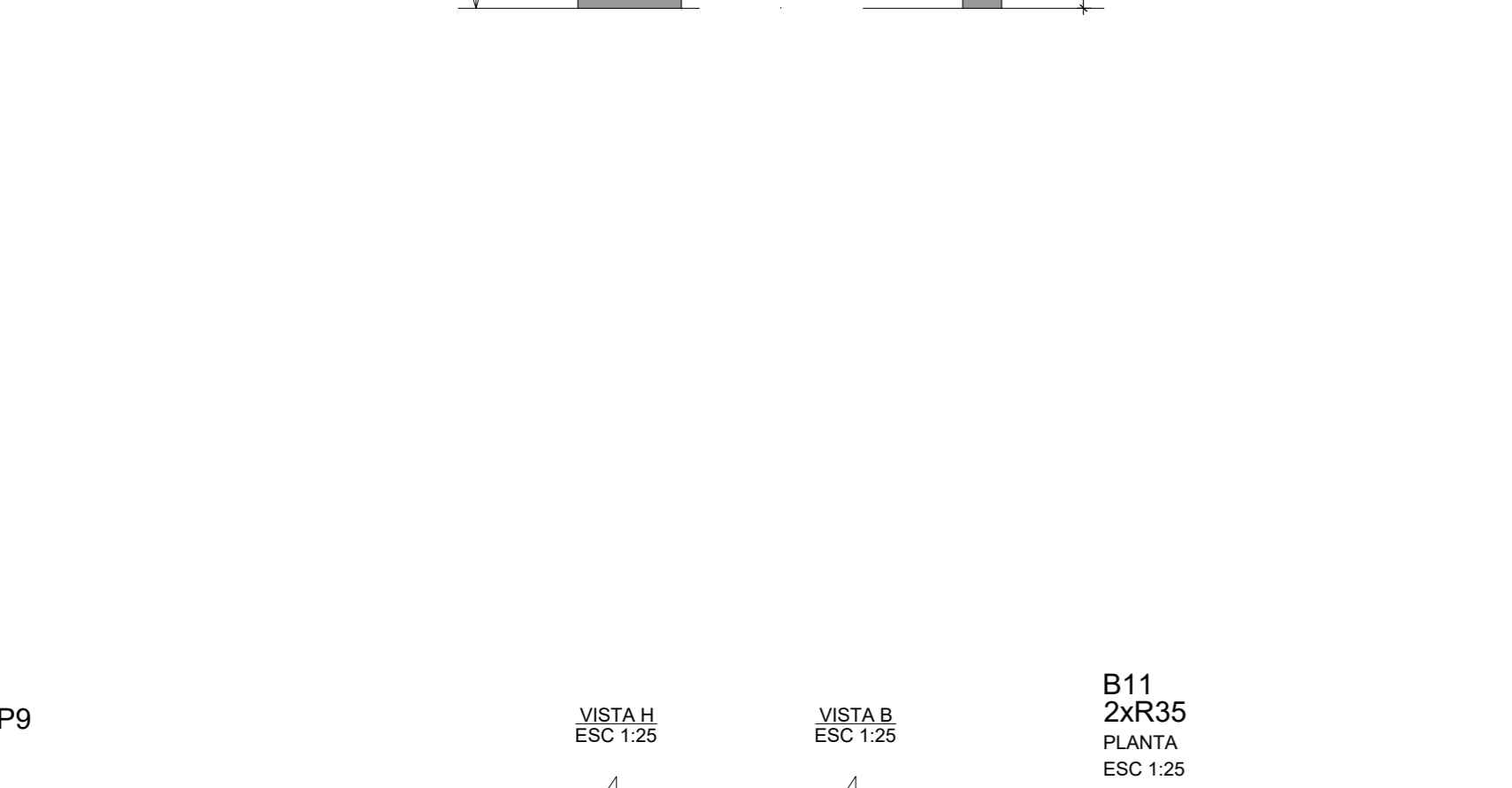
CAÇO	DIAM (mm)	C.TOTAL (cm)	PESO + 10% (kg)
CAÇO 1	6.3	38.9	10.5
CAÇO 2	10.0	23.8	66.4
CAÇO 3	5.0	274.5	46.5
PESO TOTAL (kg)			117.1
CAÇO 1			45.5

Volume de concreto (C-25) = 2.72 m³
Área de forma = 19.22 m²



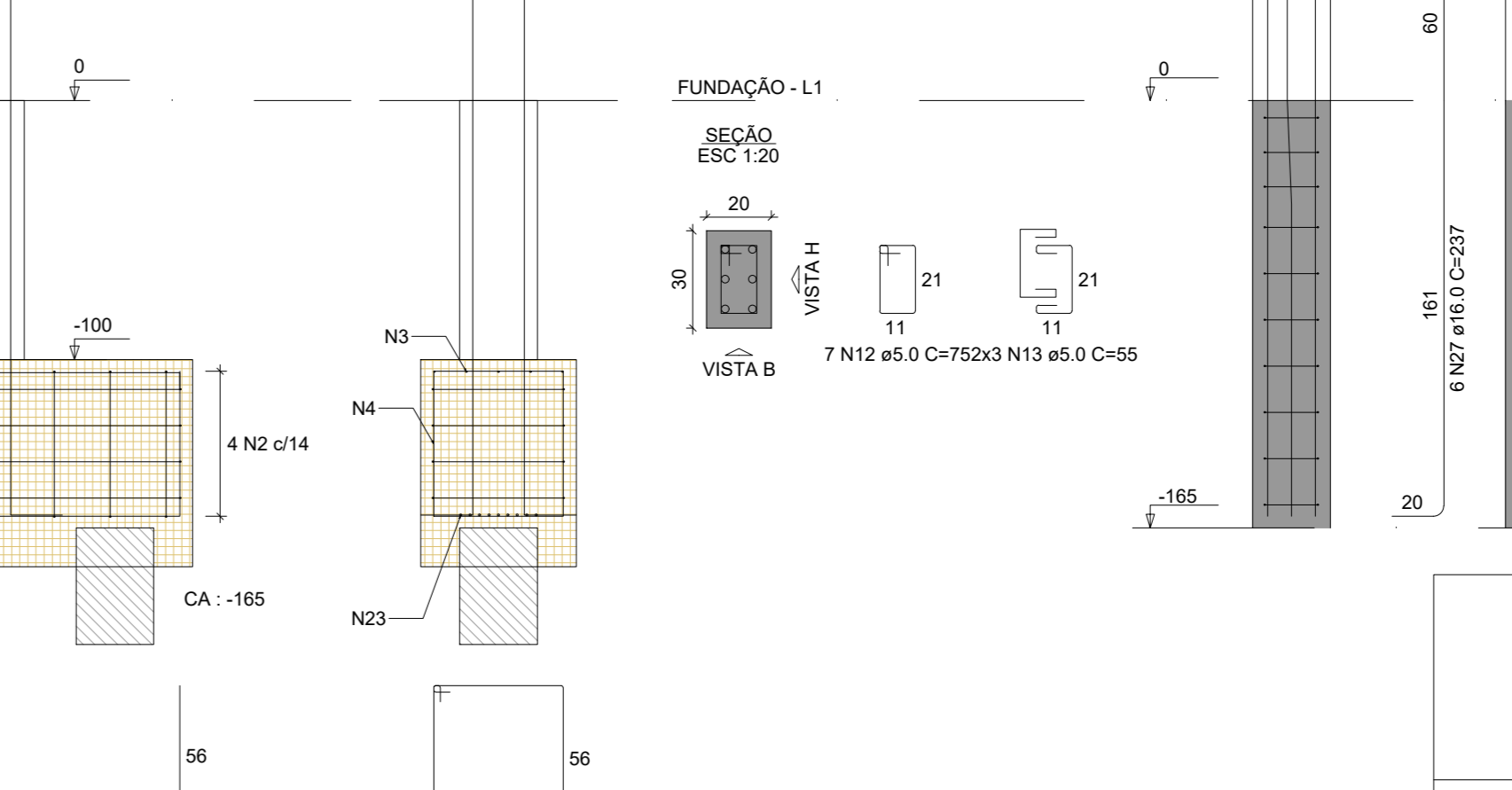
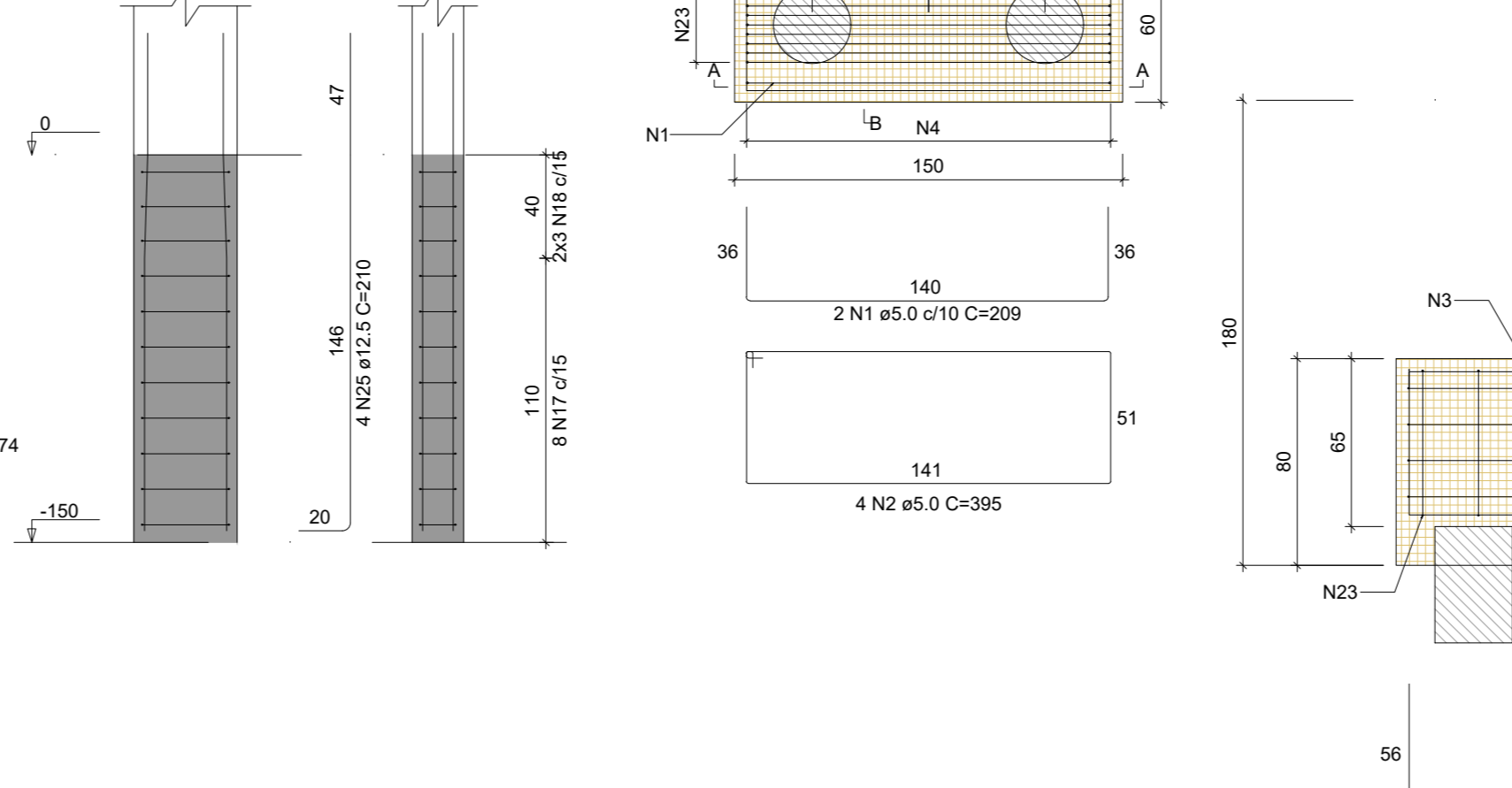
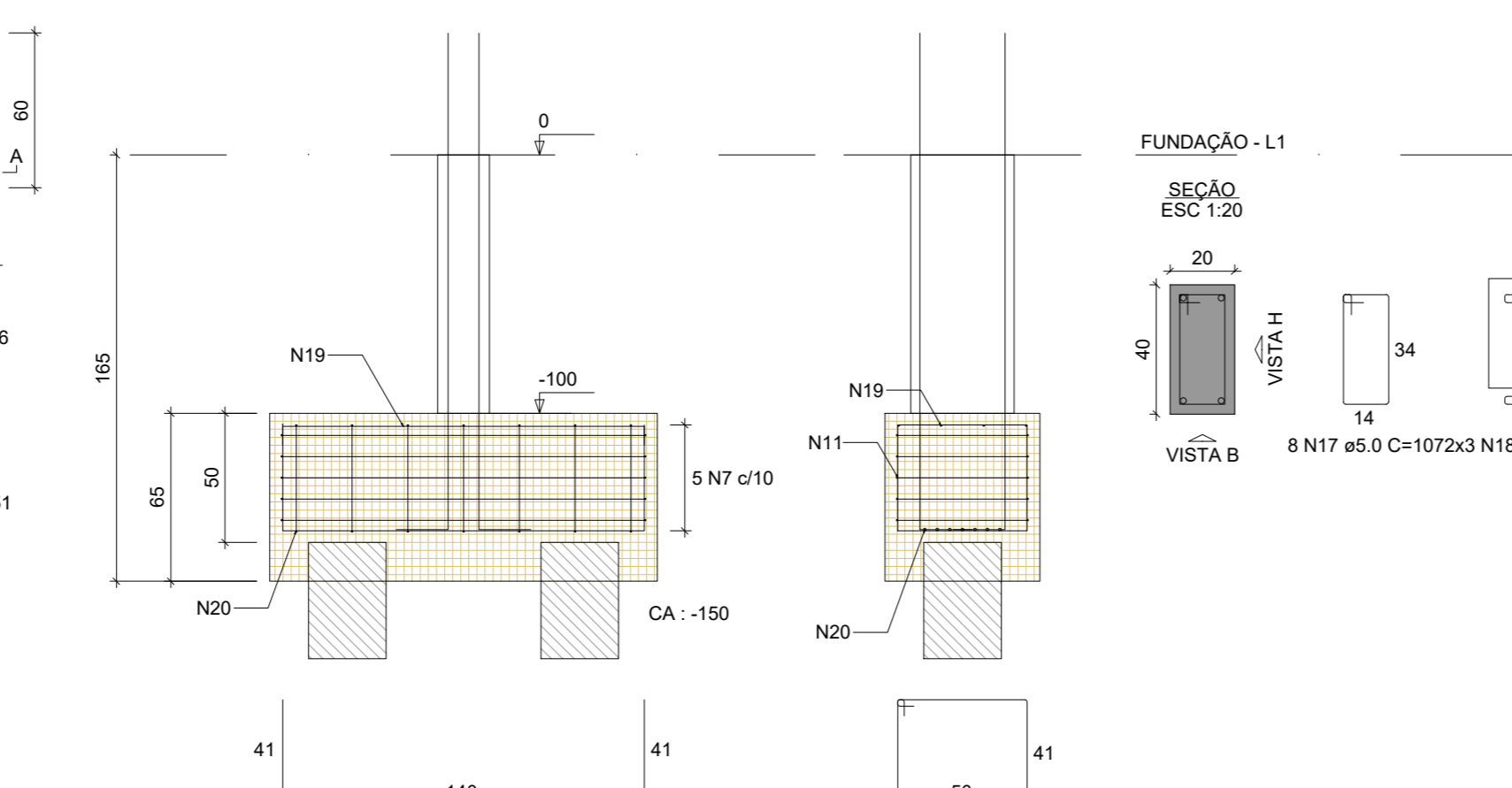
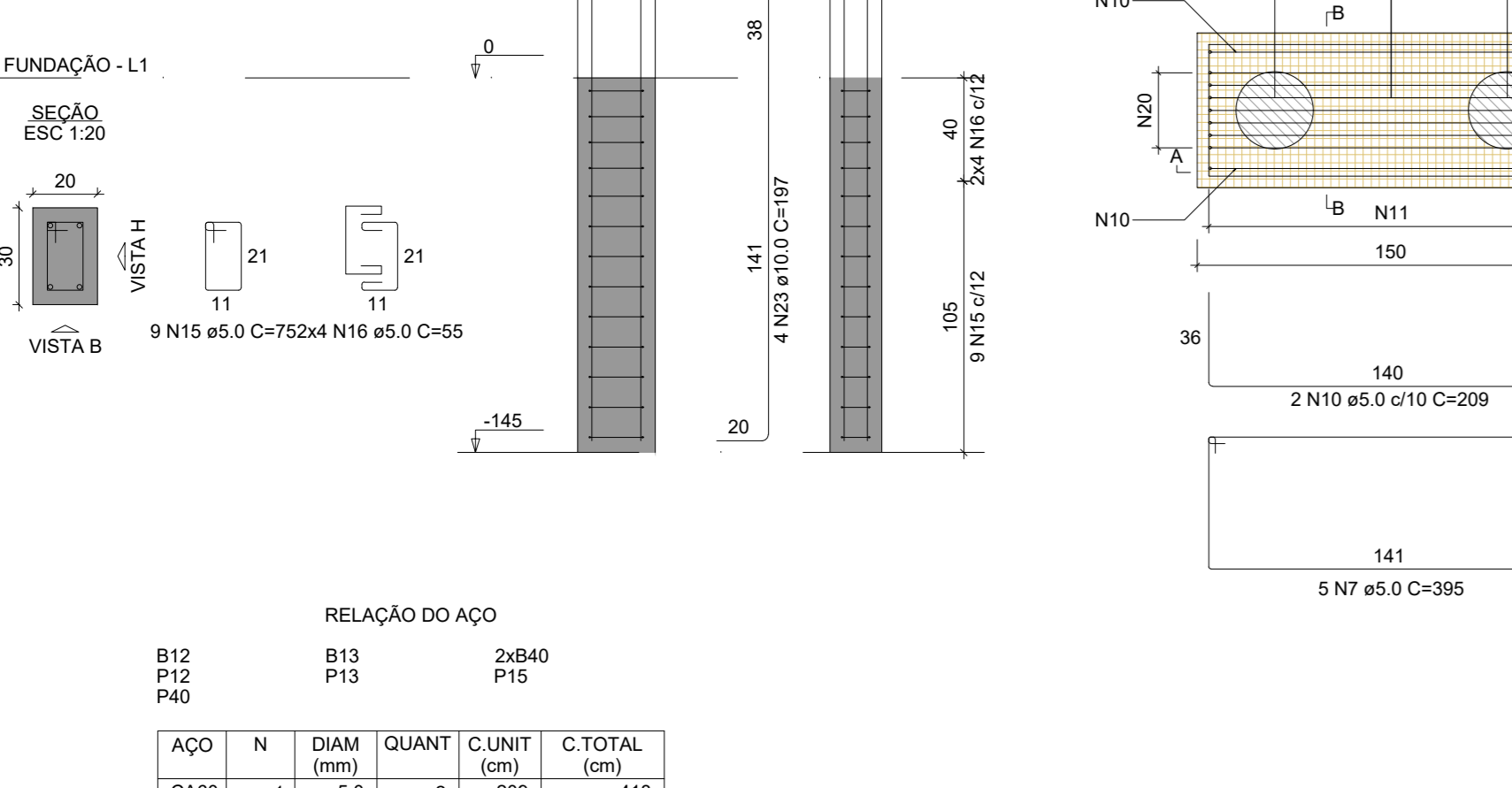
RELAÇÃO DO AÇO

CAÇO	N	DIAM (mm)	QUANT	C.LIMIT (cm)	C.TOTAL (cm)
1	1	5.0	11	VAR	VAR
2	2	5.0	4	455	1820
3	3	5.0	13	VAR	VAR
4	4	5.0	8	VAR	VAR
5	5	5.0	8	VAR	VAR
6	6	5.0	2	209	418
7	7	5.0	5	149	395
8	8	5.0	5	149	395
9	9	5.0	5	149	395
10	10	5.0	2	209	418
11	11	5.0	8	183	1281
12	12	5.0	30	29	870
13	13	5.0	9	84	756
14	14	5.0	14	94	1316
15	15	5.0	9	70	630
16	16	5.0	8	105	840
17	17	5.0	8	107	856
18	18	5.0	6	151	906
19	19	5.0	4	151	604
20	20	10.0	2	217	434
21	21	10.0	2	217	434
22	22	10.0	10	187	1870
23	23	10.0	10	187	1870
24	24	10.0	4	210	840
25	25	12.5	4	210	840
26	26	16.0	12	193	2316



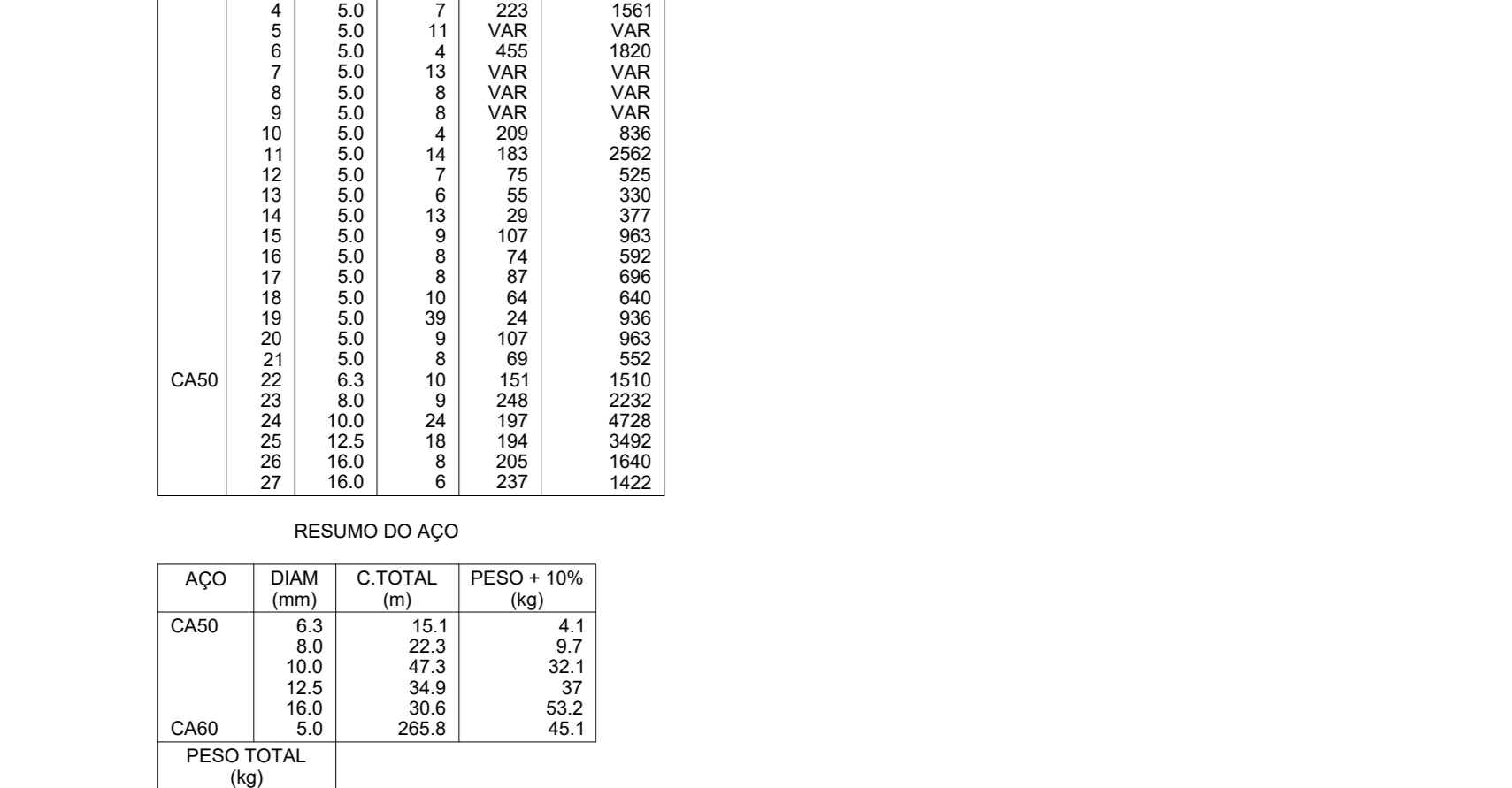
RELAÇÃO DO AÇO

CAÇO	N	DIAM (mm)	QUANT	C.LIMIT (cm)	C.TOTAL (cm)
1	1	5.0	11	VAR	VAR
2	2	5.0	4	455	1820
3	3	5.0	13	VAR	VAR
4	4	5.0	8	VAR	VAR
5	5	5.0	8	VAR	VAR
6	6	5.0	2	209	418
7	7	5.0	5	149	395
8	8	5.0	5	149	395
9	9	5.0	5	149	395
10	10	5.0	2	209	418
11	11	5.0	8	183	1281
12	12	5.0	30	29	870
13	13	5.0	9	84	756
14	14	5.0	14	94	1316
15	15	5.0	9	70	630
16	16	5.0	8	105	840
17	17	5.0	8	107	856
18	18	5.0	6	151	906
19	19	5.0	4	151	604
20	20	10.0	2	217	434
21	21	10.0	2	217	434
22	22	10.0	10	187	1870
23	23	10.0	10	187	1870
24	24	10.0	4	210	840
25	25	12.5	4	210	840
26	26	16.0	12	193	2316



RELAÇÃO DO AÇO

CAÇO	N	DIAM (mm)	QUANT	C.LIMIT (cm)	C.TOTAL (cm)
1	1	5.0	11	VAR	VAR
2	2	5.0	4	455	1820
3	3	5.0	13	VAR	VAR
4	4	5.0	8	VAR	VAR
5	5	5.0	8	VAR	VAR
6	6	5.0	2	209	418
7	7	5.0	5	149	395
8	8	5.0	5	149	395
9	9	5.0	5	149	395
10	10	5.0	2	209	418
11	11	5.0	8	183	1281
12	12	5.0	30	29	870
13	13	5.0	9	84	756
14	14	5.0	14	94	1316
15	15	5.0	9	70	630
16	16	5.0	8	105	840
17	17	5.0	8	107	856
18	18	5.0	6	151	906
19	19	5.0	4	151	604
20	20	10.0	2	217	434
21	21	10.0	2	217	434
22	22	10.0	10	187	1870
23	23	10.0	10	187	1870
24	24	10.0	4	210	840
25	25	12.5	4	210	840
26	26	16.0	12	193	2316



RELAÇÃO DO AÇO

CAÇO	N	DIAM (mm)	QUANT	C.LIMIT (cm)	C.TOTAL (cm)
1	1	5.0	11	VAR	VAR
2	2	5.0	4	455	1820
3	3	5.0	13	VAR	VAR
4	4	5.0	8	VAR	VAR
5	5	5.0	8	VAR	VAR
6	6	5.0	2	209	418
7	7	5.0	5	149	395
8	8	5.0	5	149	395
9	9	5.0	5	149	395
10	10	5.0	2	209	418
11	11	5.0	8	183	1281
12	12	5.0	30	29	870
13	13	5.0	9	84	756
14	14	5.0	14	94	1316
15	15	5.0	9	70	630
16	16	5.0	8	105	840
17	17	5.0	8	107	856
18	18	5.0	6	151	906
19	19	5.0	4	151	604
20	20	10.0	2	217	434
21	21	10.0	2	217	434
22	22	10.0	10	187	1870
23	23	10.0	10	187	1870
24	24	10.0	4	210	840
25	25	12.5	4	210	840
26	26	16.0	12	193	2316

RELAÇÃO DO AÇO

CAÇO	N	DIAM (mm)	QUANT	C.LIMIT (cm)	C.TOTAL (cm)
1	1	5.0	2	209	418
2	2	5.0	12	396	4740
3	3	5.0	5	149	745
4	4	5.0	11	VAR	VAR
5	5	5.0	11	VAR	VAR
6	6	5.0	4	151	604
7	7	5.0	13	VAR	VAR
8	8	5.0	8	VAR	VAR
9	9	5.0	8	VAR	VAR
10	10	5.0	8	VAR	VAR
11	11	5			